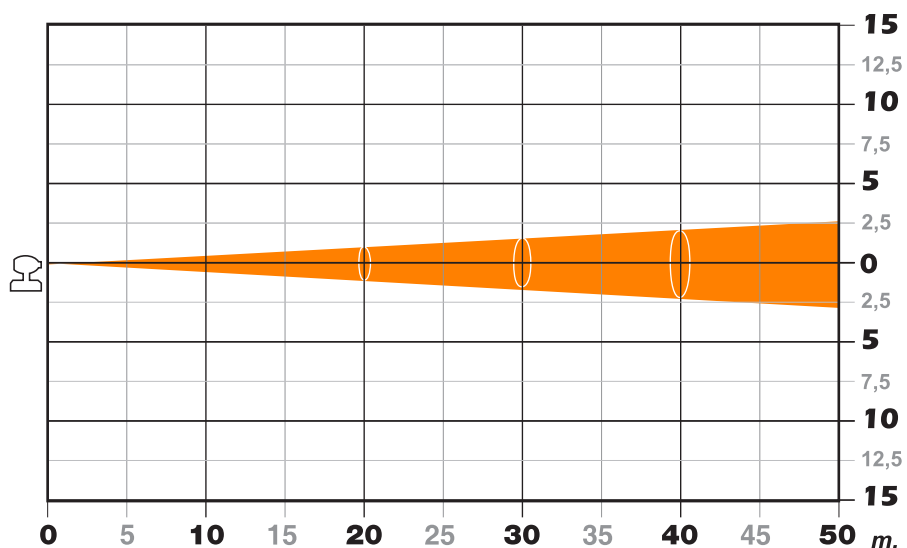


Variable beam angle (max size)

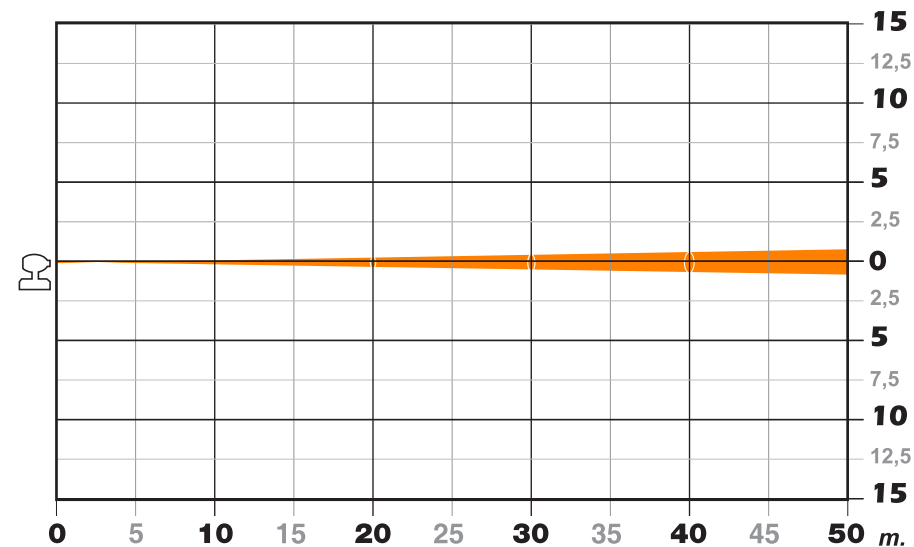
Distance (m.)	5	10	15	20	25	30	35	40	45	50	Lumen
Luminous emittance (Lux)	150920	37730	16769	9433	6037	4192	3080	2358	1863	1509	32488
ø m.	0,52	1,05	1,57	2,10	2,62	3,14	3,67	4,19	4,72	5,24	



Angle: 6°

Variable beam angle (min size)

Distance (m.)	5	10	15	20	25	30	35	40	45	50	Lumen
Luminous emittance (Lux)	150920	37730	16769	9433	6037	4192	3080	2358	1863	1509	2608
ø m.	0,15	0,30	0,45	0,59	0,74	0,89	1,04	1,19	1,34	1,48	



Angle: 1,7°



via Inghilterra 2/A - 46042 Castel Goffredo (Mantova) Italy
ph. +39 0376 77521 - fax +39 0376 780657
info@coemar.com

Duplication of this drawing, either full or in part, is strictly prohibited without prior written authorization from coemar.
Questo disegno non può essere copiato, riprodotto, mostrato a terzi senza nostra autorizzazione

Prodotto/Product:
Infinity ACL S

Lampada/Lamp Philips MSR Gold 300 FastFit

Date : 06/04/2012

Ver. N° 1.1