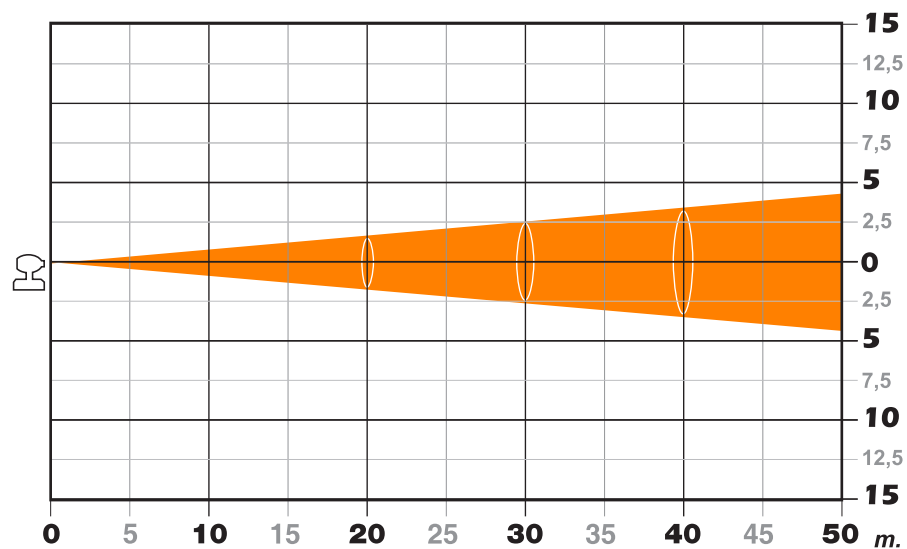


Zoom min.

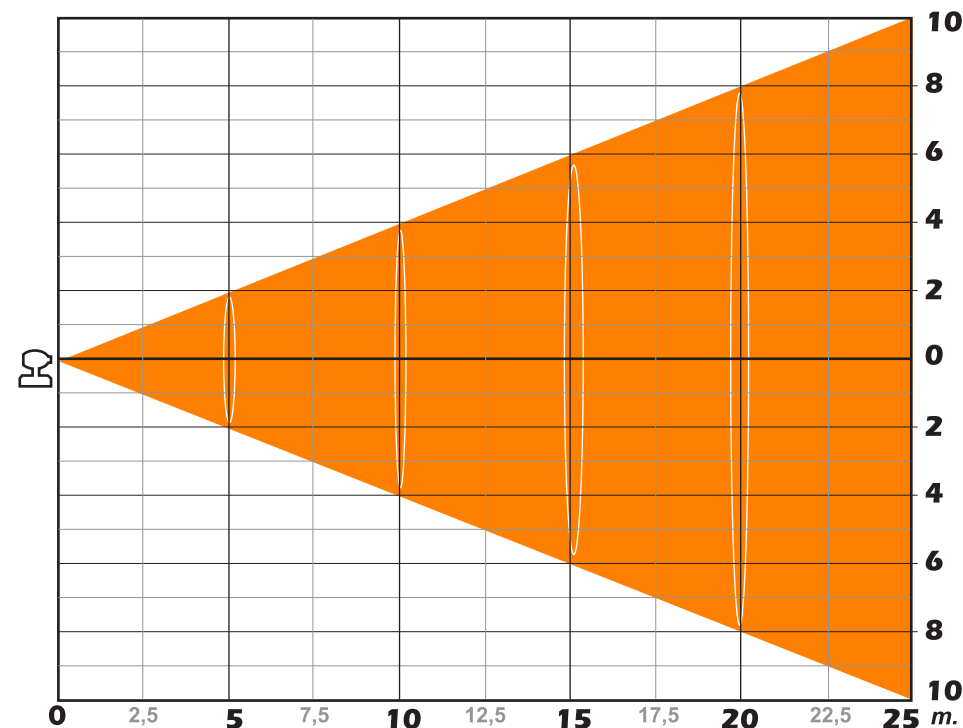
| Distance (m.) | 5 | 10 | 15 | 20 | 25 | 30 | 35 | 40 | 45 | 50 | Lumen |
|--------------------------|-------|------|------|------|------|------|------|-----|------|------|-------|
| Luminous emittance (Lux) | 38502 | 9626 | 4278 | 2406 | 1540 | 1070 | 786 | 602 | 475 | 385 | 23010 |
| ø m. | 0,87 | 1,75 | 2,62 | 3,50 | 4,37 | 5,25 | 6,12 | 7 | 7,87 | 8,75 | |



Angle: 10°

Zoom max.

| Distance (m.) | 2,5 | 5 | 7,5 | 10 | 12,5 | 15 | 17,5 | 20 | 22,5 | 25 | Lumen |
|--------------------------|------|------|-----|-----|------|-----|------|-----|------|----|-------|
| Luminous emittance (Lux) | 8240 | 2060 | 916 | 515 | 330 | 229 | 168 | 129 | 102 | 82 | 23562 |
| ø m. | 2 | 4 | 6 | 8 | 10 | 12 | 14 | 16 | 18 | 20 | |



Angle: 44°



via Inghilterra 2/A - 46042 Castel Goffredo (Mantova) Italy
ph. +39 0376 77521 - fax +39 0376 780657
info@coemar.com

Duplication of this drawing, either full or in part, is strictly prohibited without prior written authorization from coemar.
Questo disegno non può essere copiato, riprodotto, mostrato a terzi senza nostra autorizzazione

Prodotto/Product:

Infinity Spot M

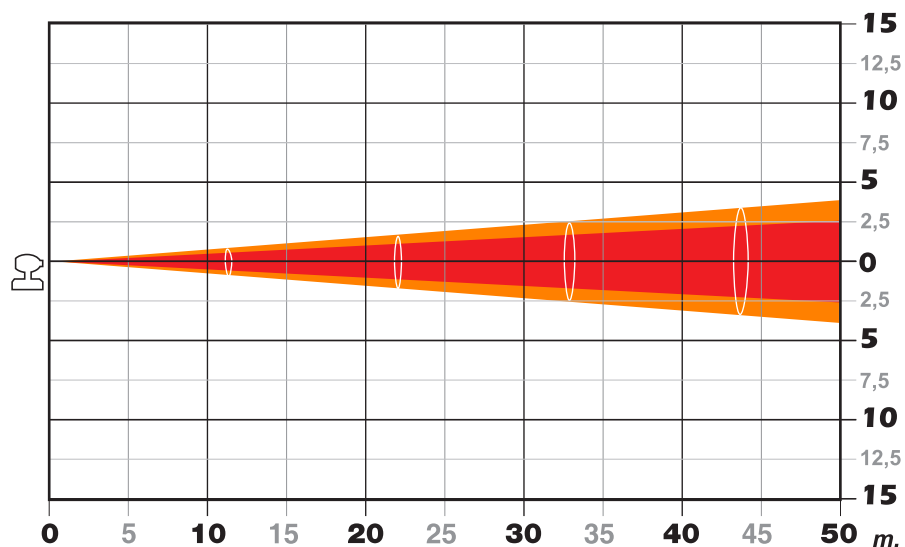
Lampada/Lamp Philips MSR GOLD 700 minifast fit

Date : 06/04/2012

Ver. N° 2.2

Zoom min. with Frost

| Distance (m.) | 5 | 10 | 15 | 20 | 25 | 30 | 35 | 40 | 45 | 50 | Lumen |
|-------------------------------|-------|------|------|------|------|------|------|------|------|------|-------|
| Luminous emittance (Lux) | 30000 | 7500 | 3333 | 1875 | 1200 | 833 | 612 | 469 | 370 | 300 | 5828 |
| 1/2 peak angle θ (m.) | 0,5 | 1 | 1,49 | 2 | 2,49 | 3 | 3,48 | 3,98 | 4,48 | 4,98 | |
| 1/10 peak angle θ (m.) | 0,87 | 1,75 | 2,62 | 3,50 | 4,37 | 5,25 | 6,12 | 7 | 7,87 | 8,75 | |

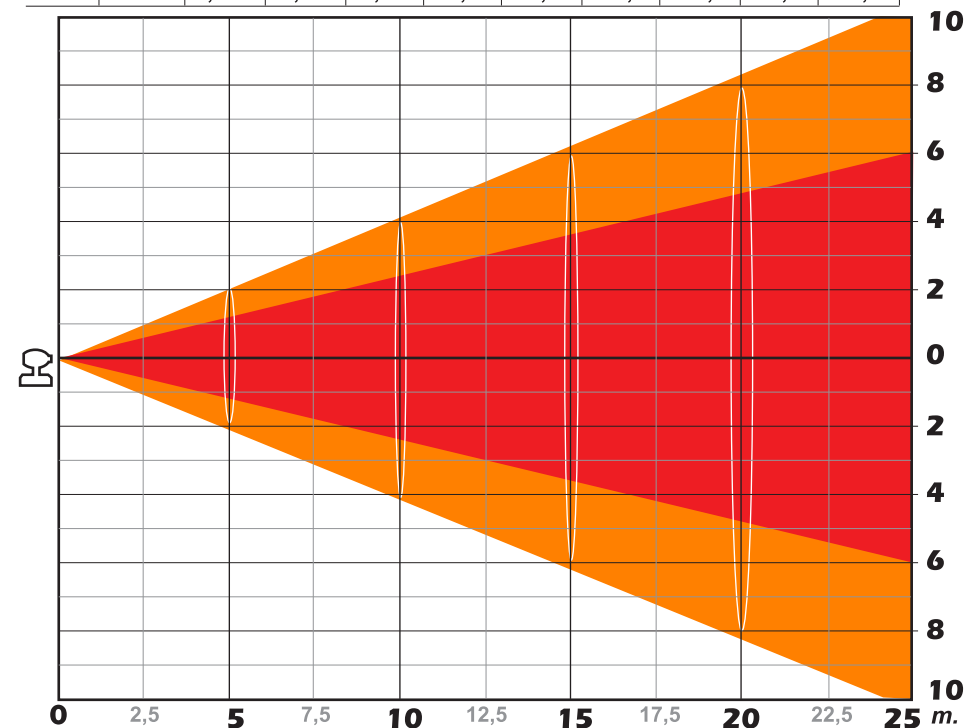


1/2 peak angle: 5,7°

1/10 peak angle: 10°

Zoom max. with Frost

| Distance (m.) | 2,5 | 5 | 7,5 | 10 | 12,5 | 15 | 17,5 | 20 | 22,5 | 25 | Lumen |
|-------------------------------|------|------|------|------|-------|-------|------|------|------|------|-------|
| Luminous emittance (Lux) | 6640 | 1660 | 738 | 415 | 266 | 184 | 136 | 104 | 82 | 66 | 7215 |
| 1/2 peak angle θ (m.) | 1,20 | 2,40 | 3,60 | 4,80 | 6 | 7,20 | 8,40 | 9,60 | 10,8 | 12 | |
| 1/10 peak angle θ (m.) | 2 | 4,14 | 6,21 | 8,28 | 10,36 | 12,43 | 14,5 | 16,6 | 18,7 | 20,7 | |



1/2 peak angle: 27°

1/10 peak angle: 45°



via Inghilterra 2/A - 46042 Castel Goffredo (Mantova) Italy
ph. +39 0376 77521 - fax +39 0376 780657
info@coemar.com

Duplication of this drawing, either full or in part, is strictly prohibited without prior written authorization from coemar.
Questo disegno non può essere copiato, riprodotto, mostrato a terzi senza nostra autorizzazione

Prodotto/Product:

Infinity Spot M

Lampada/Lamp Philips MSR GOLD 700 minifast fit

Date : 06/04/2012

Ver. N° 2.2