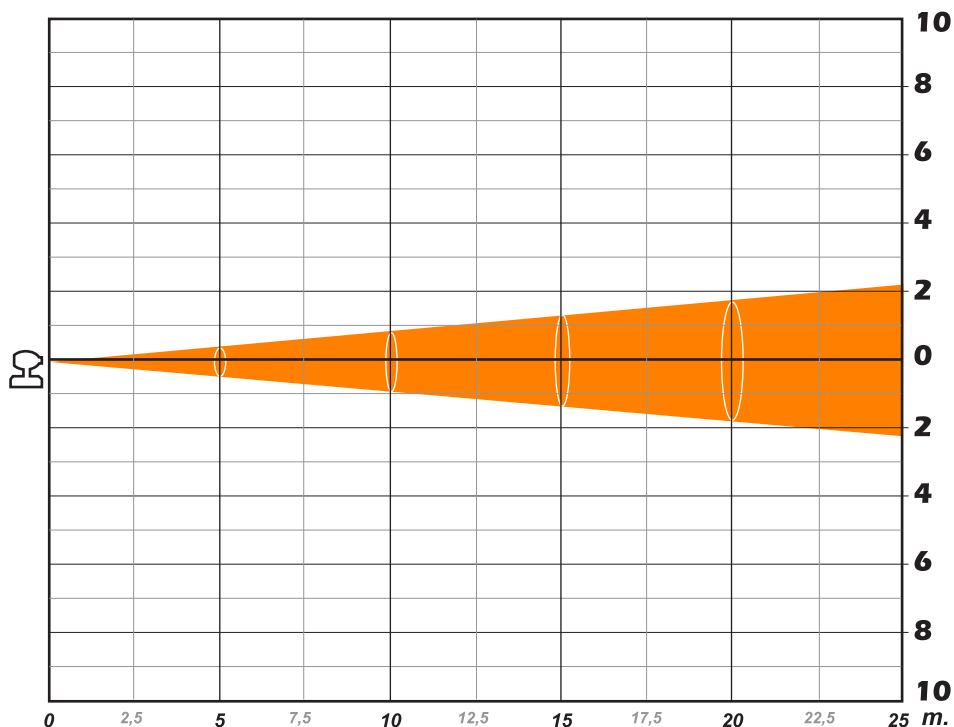


Zoom min.

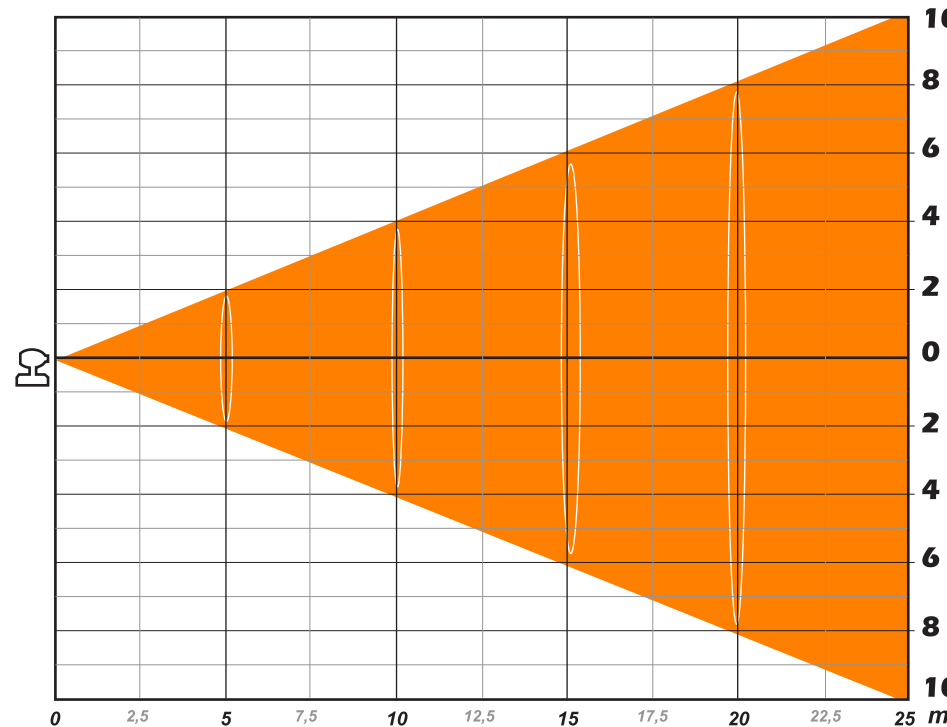
Distance (m.)	2,5	5	7,5	10	12,5	15	17,5	20	22,5	25	Lumen
Luminous emittance (Lux)	19800	4950	2200	1238	792	550	404	309	244	198	2958
ø m.	0,44	0,87	1,31	1,75	2,19	2,62	3,06	3,50	3,94	4,37	



Angle: 10°

Zoom max.

Distance (m.)	2,5	5	7,5	10	12,5	15	17,5	20	22,5	25	Lumen
Luminous emittance (Lux)	1240	310	138	78	50	34	25	19	15	12	3574
ø m.	2,02	4,04	6,06	8,08	10,10	12,12	14,14	16,16	18,18	20,20	



Angle: 44°



via Inghilterra 2/A - 46042 Castel Goffredo (Mantova) Italy
 ph. +39 0376 77521 - fax +39 0376 780657
 info@coemar.com

Duplication of this drawing, either full or in part, is strictly prohibited without prior written authorization from coemar.
 Questo disegno non può essere copiato, riprodotto, mostrato a terzi senza nostra autorizzazione

Prodotto/Product:
Infinity Spot M

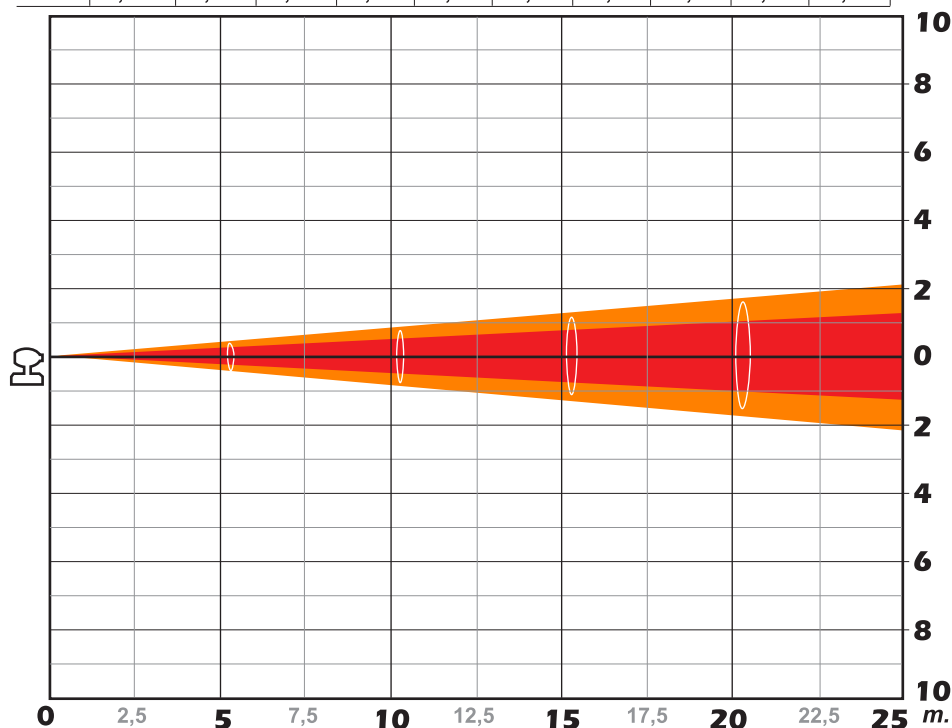
Lampada/Lamp 750W halogen minifast fit

Date : 06/04/2012

Ver. N° 1.2

Zoom min. with Frost

Distance (m.)	2,5	5	7,5	10	12,5	15	17,5	20	22,5	25	Lumen
Luminous emittance (Lux)	16000	4000	1778	1000	640	444	327	250	198	160	777
1/2 peak angle θ (m.)	0,25	0,5	0,75	1	1,24	1,49	1,74	1,99	2,24	2,49	
1/10 peak angle θ (m.)	0,44	0,87	1,31	1,75	2,19	2,62	3,06	3,05	3,94	4,37	

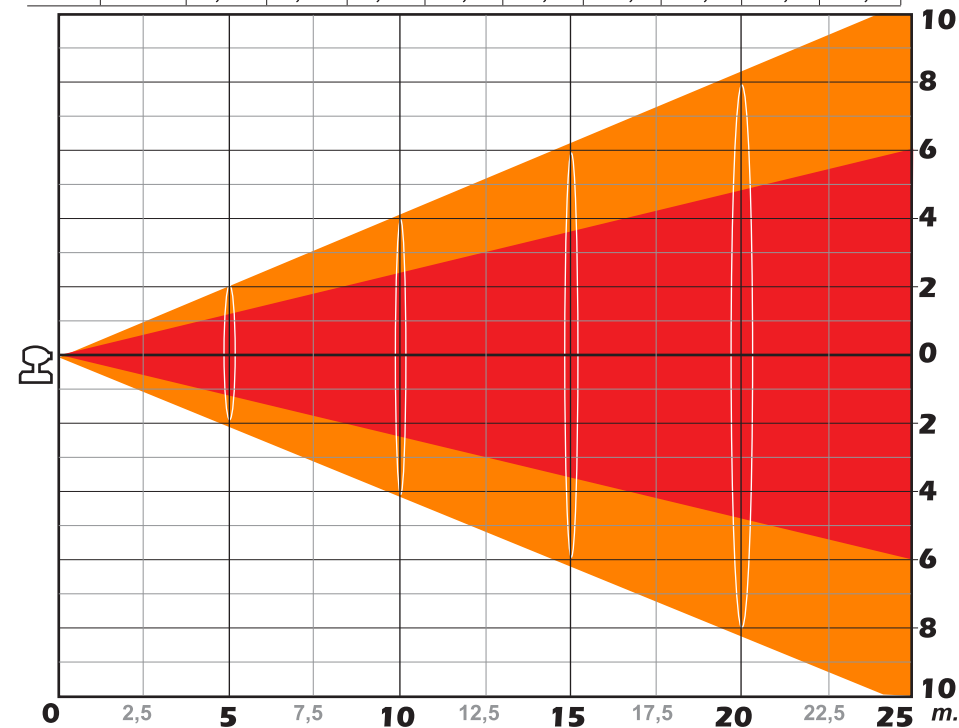


1/2 peak angle: 5,7°

1/10 peak angle: 10°

Zoom max. with Frost

Distance (m.)	2,5	5	7,5	10	12,5	15	17,5	20	22,5	25	Lumen
Luminous emittance (Lux)	1016	254	133	64	41	28	21	16	13	10	1112
1/2 peak angle θ (m.)	1,20	2,40	3,60	4,80	6	7,20	8,40	9,60	10,8	12	
1/10 peak angle θ (m.)	2	4,14	6,21	8,28	10,36	12,43	14,5	16,6	18,7	20,7	



1/2 peak angle: 27°

1/10 peak angle: 45°



via Inghilterra 2/A - 46042 Castel Goffredo (Mantova) Italy
ph. +39 0376 77521 - fax +39 0376 780657
info@coemar.com

Duplication of this drawing, either full or in part, is strictly prohibited without prior written authorization from coemar.
Questo disegno non può essere copiato, riprodotto, mostrato a terzi senza nostra autorizzazione

Prodotto/Product:

Infinity Spot M

Lampada/Lamp 750W halogen minifast fit

Date : 06/04/2012

Ver. N° 1.2