

DIGifactor



SPECIFICATIONS

- Power output
6 Ch x 2,3 Kw, 10A (DIGifactor Club)
12 Ch x 2,3 Kw, 10A (DIGifactor 12 ch)

PHYSICAL SIZE

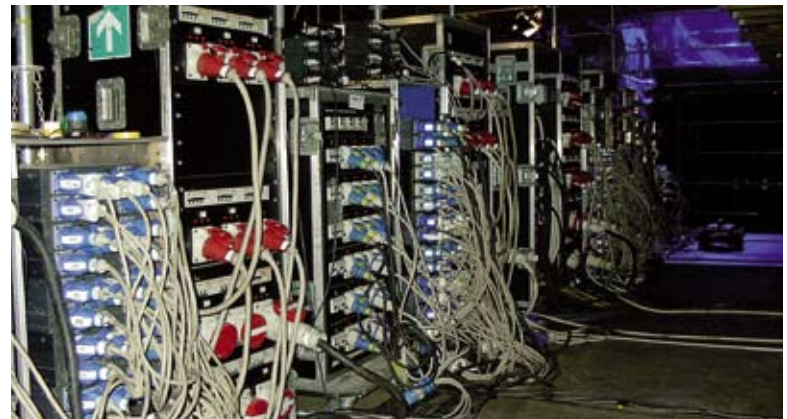
- Length: 488 mm (19.0 in)
- Width: 322 mm (12.0 in)
- Height, DIGifactor Club: 98 mm (3.8 in)
- Height, DIGifactor 12 ch: 220 mm (8.0 in)
- Weight, DIGifactor Club: 7,5 kg (16.5 lbs)
- Weight, DIGifactor 12 ch: 12 kg (26.4 lbs)

CONTROL PROTOCOL AND PROGRAMMING

- USITT DMX512/1990
- Setting and addressing: led display

ELECTRICAL SPECIFICATIONS/CONNECTIONS

- AC power: 200/240 V, 50/60 Hz,
100/120 V, 50/60 Hz (only DIGifactor Club)
- DMX data in/out: 5 pin locking XLR



- DIGifactor Club 6 Ch - # 6012**
200/240V 50/60HZ
- DIGifactor Club 6 Ch - # 6012/1**
100/120V 50/60HZ
- DIGifactor 12 Ch - # 6006**