

Technical Brochure



Infinity Wash M

Infinity Series

∞ Infinity

Wash M

KEY FEATURES

- “MULTI-lamp” ready (Patented)
- Bright as a 1200 W fixture, in a package 1/3 the size
- Zoom range from 42° down to 6°
- Moon flower aerial effect (Patent Pending)
- Space, weight, power saving
- Effect engine
- Artnet ready
- New digital ballast technology

Infinity Wash M

SPECIFICATIONS

CMY color mixing

5 colors + open

CTO filter

Beam shaper 360° (Patent Pending)

2 Prismatic effects: moon flower, beam'o (Patent Pending)

Motorized optical effect zoom: 6° to 26°

Motorized optical wide zoom: 8° to 42°

Dimmer

Mechanical and electronic strobe (zap effect), synchronized, random, pulse effect

Modular design for easy maintenance and servicing

Pan 540°, Tilt 284°, 16 bit

PHYSICAL SIZE

Length: 459 mm (18.1 in)

Width: 377 mm (14.8 in)

Height: 602 mm (23.7 in), head straight up

Weight: 25 kg (55 lbs)

LAMP AND BALLAST

Type: Philips MSR Gold 575/2, Philips MSR Gold 700/2

Mini FastFit, MULTI-lamp ready

Color temperature: 7400 Kelvin

Color rendering index: 71

Average lamp life: 750 hours

Socket: PGJX28

Digital electronic ballast with Power Factor Correction

CONTROL PROTOCOL AND PROGRAMMING

USITT DMX512/1990

Artnet, Artnet to DMX converter

DMX channels: 18

Setting and addressing: LCD display or remotely

ELECTRICAL SPECIFICATIONS/CONNECTIONS

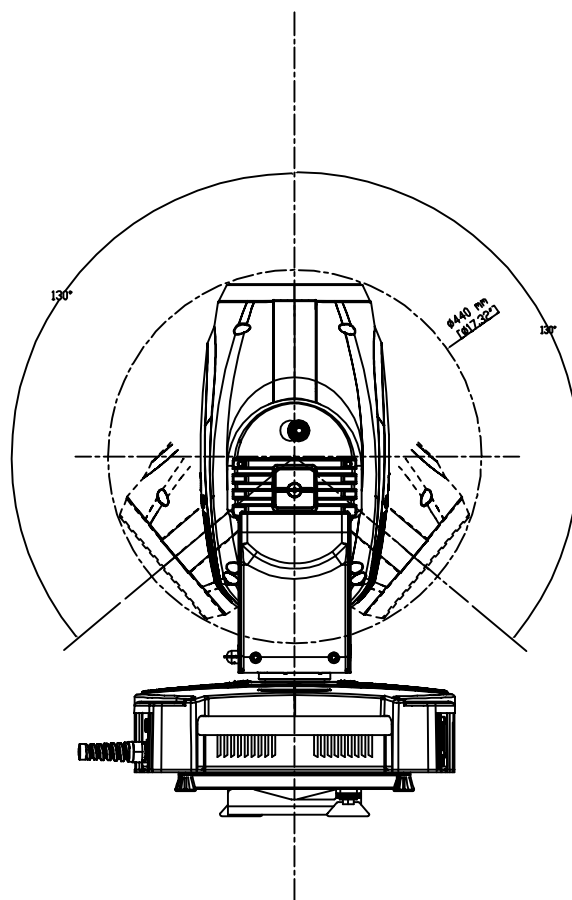
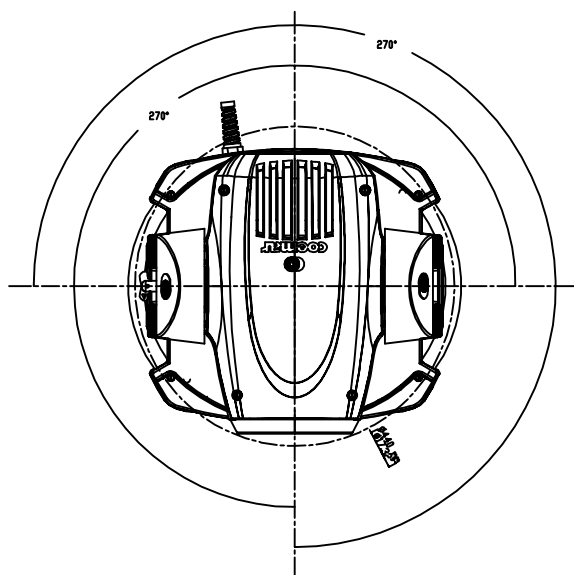
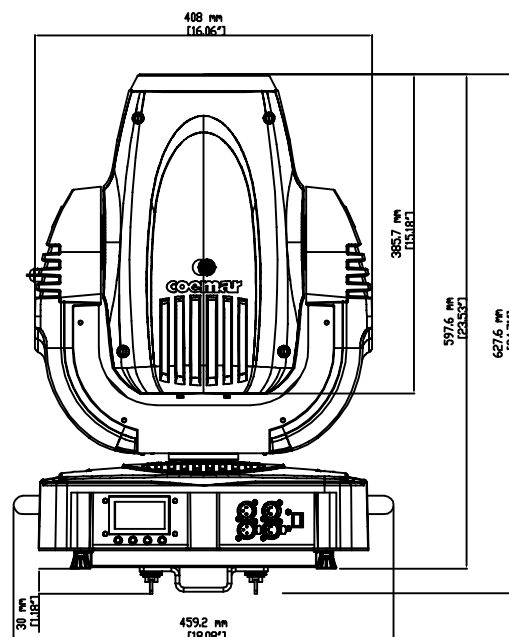
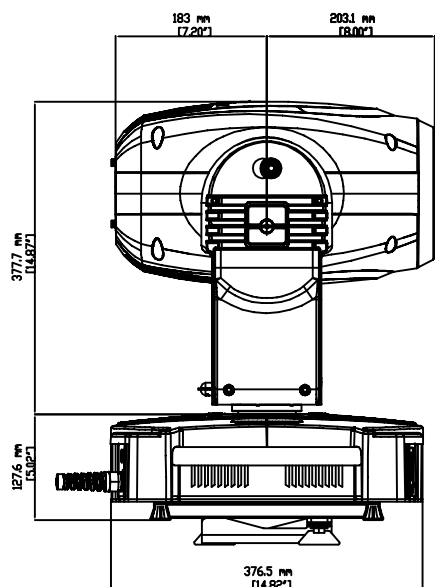
AC power: 90-260 V, auto sensing, 50/60 Hz, 2 m (6.6 ft) integral cable without power plug

Power consumption (with MSR Gold 700/2): 4.5 A at 230 V, 9.5 A at 115 V

DMX data in/out: 3 pin and 5 pin locking XLR

Ethernet RJ45 port

Infinity Wash M - Drawing Size

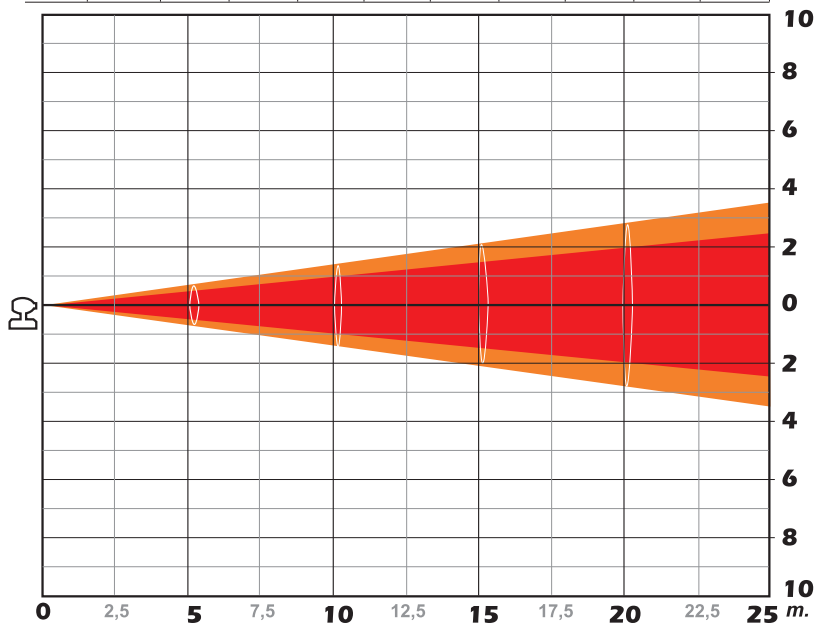


Infinity Wash M - DMX Chart

DMX Chart 18 Channels	
channel	effect
1	X axis, base movement (pan) coarse
2	X axis, base movement (pan) fine
3	Y axis, yoke movement (tilt) coarse
4	Y axis, yoke movement (tilt) fine
5	movement speed
6	dimmer
7	strobe, shutter and zap effect
8	zoom
Note 1: zoom 2X / 3X is selectable from channel 9	
9	zoom selection range
10	no effect
11	effect wheel selection
12	indexing effect rotation through 360°
13	colors selection from the color wheel
14	cyan
15	magenta
16	yellow
17	zap effect (effect varies depending upon channel 7 strobe)
17	halogen dimmer curve (effect varies depending upon channel 6 dimmer)
Note 2: when using halogen lamp, channel 17 allow the selection of the curve which can be a combination of the characteristic dimming lamp and/or mechanical dimmer	
18	lamp on/off and motors reset
Note 3: the LCD panel may be used to disable the switching off of the lamp via DMX	
Note 4: turning off the lamp and all reset functions are delayed by 6 seconds to prevent accidental activation	
Note 5: the lamp on/off function can only be effected if an opposite level is set	

Zoom min. 2X

Distance (m.)	2,5	5	7,5	10	12,5	15	17,5	20	22,5	25	Lumen
Luminous emittance (Lux)	24000	6000	2667	1500	960	667	490	375	296	240	4338
1/2 peak angle α (m.)	0,48	0,96	0,44	1,93	2,41	2,89	3,37	3,85	4,33	4,81	
1/10 peak angle α (m.)	0,70	1,41	2,11	2,81	3,51	4,22	4,92	5,42	6,32	7,03	

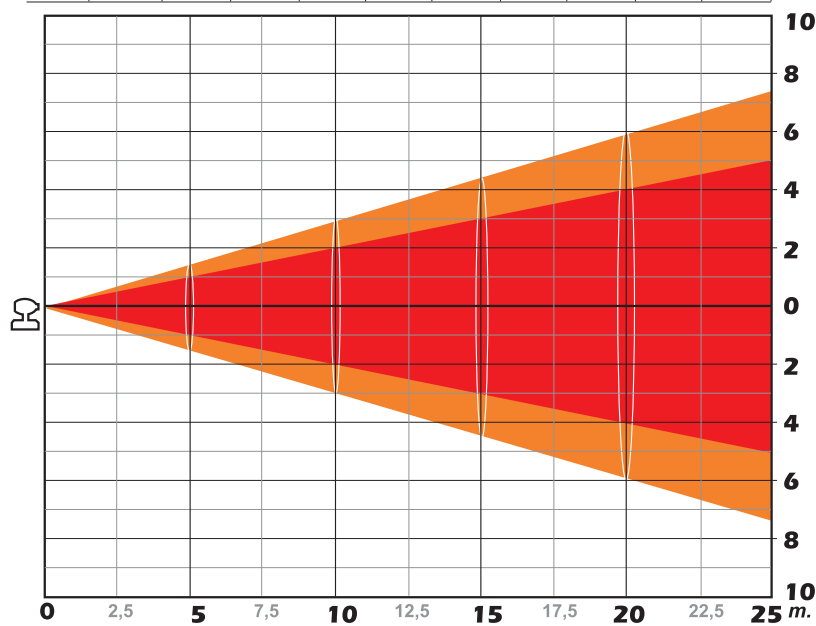


1/2 peak angle: 11°

1/10 peak angle: 16°

Zoom max 2X

Distance (m.)	2,5	5	7,5	10	12,5	15	17,5	20	22,5	25	Lumen
Luminous emittance (Lux)	3248	812	361	203	130	90	66	51	40	32	2137
1/2 peak angle α (m.)	0,93	1,85	2,78	3,71	4,63	5,56	6,49	7,41	8,34	9,27	
1/10 peak angle α (m.)	1,48	2,96	4,44	5,92	7,41	8,89	10,37	11,85	13,33	14,81	



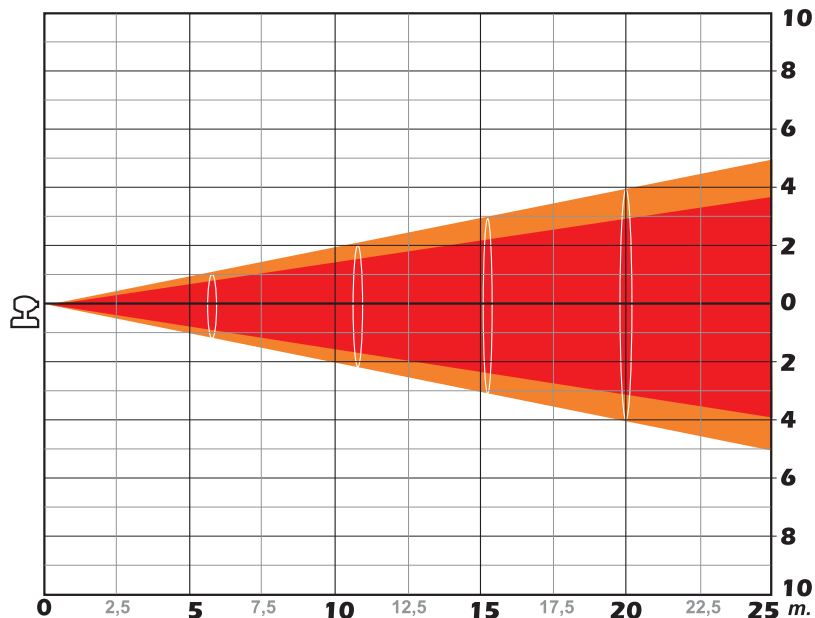
1/2 peak angle: 21°

1/10 peak angle: 33°

Infinity Wash M - Photometrics Data (750W halogen minifast fit)

Zoom min. 3X

Distance (m.)	2,5	5	7,5	10	12,5	15	17,5	20	22,5	25	Lumen
Luminous emittance (Lux)	11520	2880	1280	720	461	320	235	180	142	115	4979
1/2 peak angle α (m)	0,75	1,49	2,24	2,99	3,74	4,48	5,23	5,98	6,73	7,47	
1/10 peak angle α (m)	0,97	1,94	2,92	3,89	4,86	5,83	6,80	7,78	8,75	9,72	

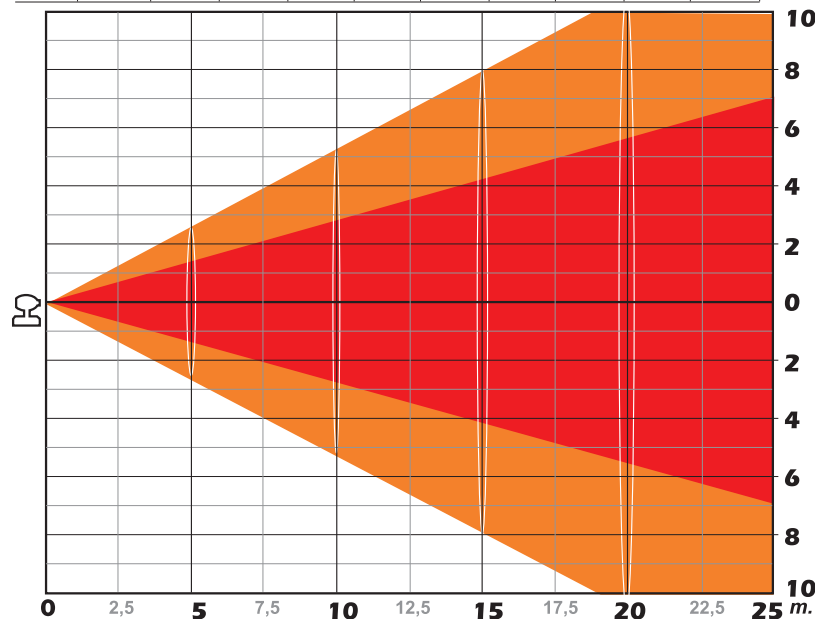


1/2 peak angle: 17°

1/10 peak angle: 22°

Zoom max. 3X

Distance (m.)	2,5	5	7,5	10	12,5	15	17,5	20	22,5	25	Lumen
Luminous emittance (Lux)	1044	261	116	65	42	29	21	16	13	10	1499
1/2 peak angle α (m)	1,39	2,77	4,16	5,55	6,93	8,32	9,71	11,09	12,48	13,87	
1/10 peak angle α (m)	2,66	5,32	7,98	10,63	13,29	15,95	18,61	21,27	23,96	26,59	

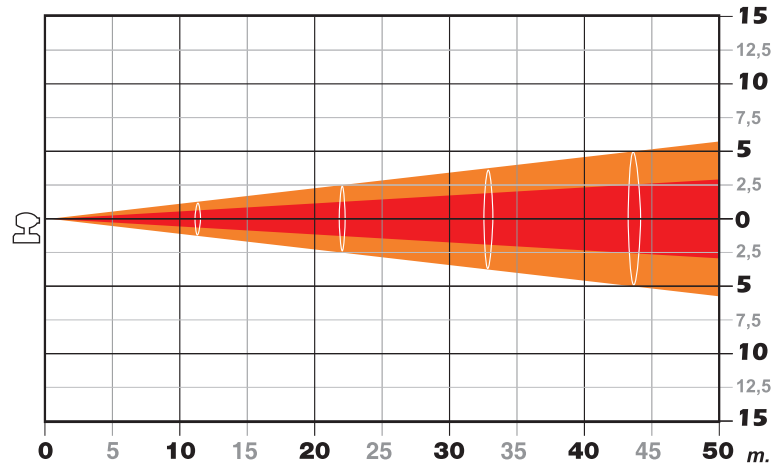


1/2 peak angle: 31°

1/10 peak angle: 56°

Zoom min. 2X

Distance (m.)	5	10	15	20	25	30	35	40	45	50	Lumen
Luminous emittance (Lux)	35361	18000	8000	4500	2880	2000	1469	1125	889	720	15499
1/2 peak angle α (m)	0,52	1,04	1,56	2,07	2,59	3,11	3,63	4,15	4,67	5,19	
1/10 peak angle α (m)	1,15	2,31	3,46	4,62	5,77	6,93	8,08	9,23	10,39	11,54	

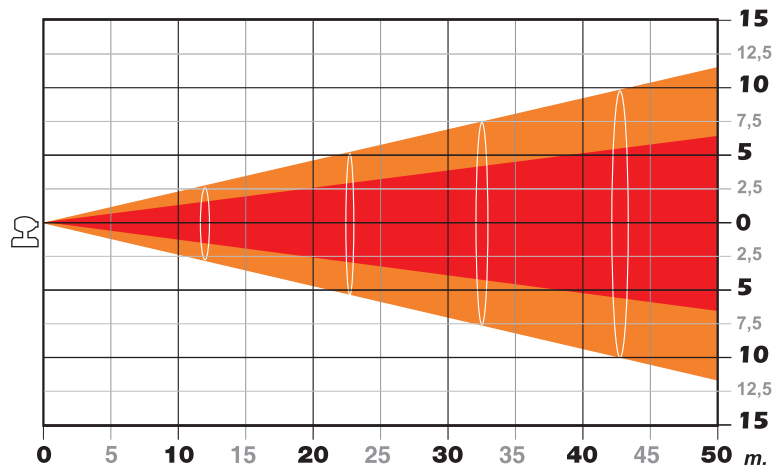


1/2 peak angle: 6°

1/10 peak angle: 13°

Zoom max 2X

Distance (m.)	5	10	15	20	25	30	35	40	45	50	Lumen
Luminous emittance (Lux)	9010	2253	1001	563	360	250	184	141	111	90	10549
1/2 peak angle α (m)	1,30	2,59	3,89	5,19	6,49	7,78	9,08	10,38	11,68	12,97	
1/10 peak angle α (m)	2,29	4,59	6,88	9,18	11,47	13,77	16,06	18,35	20,65	22,94	

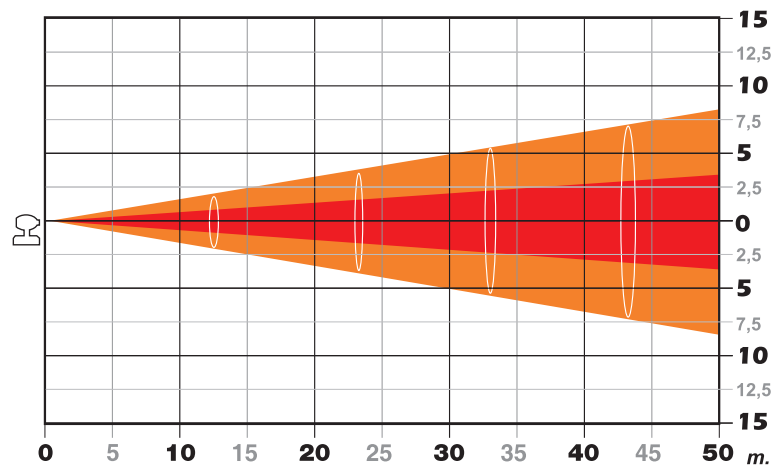


1/2 peak angle: 14°

1/10 peak angle: 26°

Zoom min. 3X

Distance (m.)	5	10	15	20	25	30	35	40	45	50	Lumen
Luminous emittance (Lux)	35361	8840	3929	2210	1414	982	722	553	437	354	13526
1/2 peak angle α (m.)	0,70	1,39	2,09	2,79	3,48	4,18	4,88	5,57	6,27	6,97	
1/10 peak angle α (m.)	1,65	3,30	4,96	6,61	8,26	9,91	11,57	13,22	14,87	16,52	

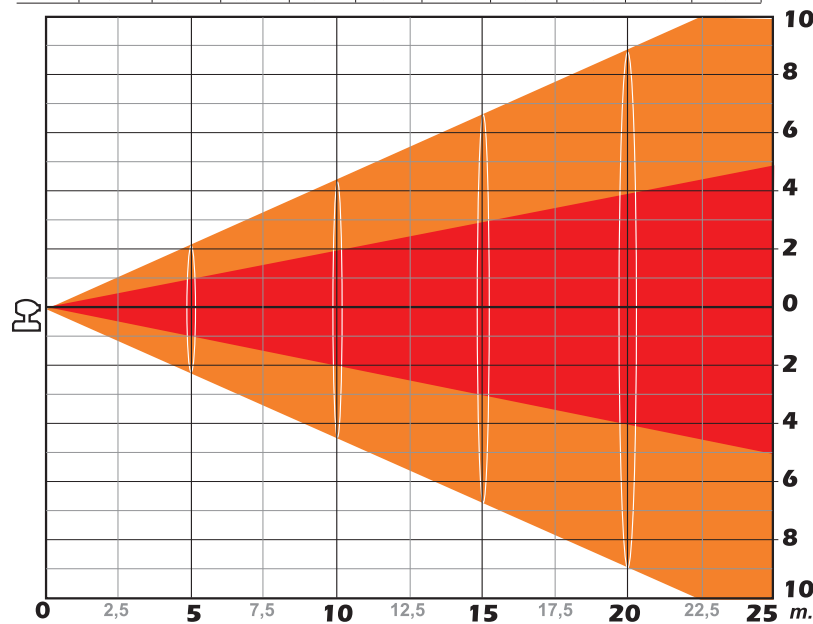


1/2 peak angle: 8°

1/10 peak angle: 18°

Zoom max. 3X

Distance (m.)	2,5	5	7,5	10	12,5	15	17,5	20	22,5	25	Lumen
Luminous emittance (Lux)	12164	3041	1352	760	487	338	248	190	150	122	8784
1/2 peak angle α (m.)	1,08	2,17	3,25	4,33	5,42	6,50	7,58	8,67	9,75	10,84	
1/10 peak angle α (m.)	1,88	3,77	5,65	7,53	9,41	11,30	13,18	15,06	16,94	18,83	



1/2 peak angle: 22°

1/10 peak angle: 42°



Coemar Lighting Srl
Via Carpenedolo, 90
46043 Castiglione delle Stiviere
Mantova - Italy
ph. +39 0376 1514412
fax. +39 0376 1514380

info@coemar.com
www.coemar.com