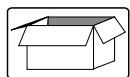


This instruction leaflet describes how to use the coemar Profilo 22/40 spotlight. The advice given here will ensure the optimum performance from the product for many years.



### UNPACKING

#### \* check for damage

check the contents carefully. In the case of transportation damage, inform your distributor immediately.

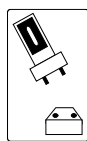
#### \* packing list

check that all of the following items are included in the carton:

- 1 Profilo 22/40
- 1 1000W lamp
- 1 colour frame
- 1 safety chain
- 4 shutter blades

#### \* type of lamp

each Profilo 22/40 spotlight is supplied with a 1000W lamp. Ensure that the lamp has a GX9,5 lamp base, and is the correct wattage and voltage. A list of compatible lamps is shown at the end of this page.



### FITTING LAMP

**isolate luminaire from both poles of the main supply before opening**

**the surface temperature of the luminaire reaches 180° C after 5 minutes and has a maximum steady-state temperature of 200° C.**

Ensure that the lamp is cold before attempting to remove it. The luminaire can only be opened 10 minutes after mains supply disconnection.

#### \* release the lamp tray

A captive screw fastener is fitted beneath the Profilo 22/40 to lock the lamp tray in position. Unscrew the knob until it is free, and gently pull it down to lower the lamp tray. As soon as the tray is released, the safety switch will automatically disconnect both poles of the mains supply to the lamp.

#### \* handle the lamp with care

the lamp used for the Profilo 22/40 spotlight is a quartz glass halogen lamp which must be handled with care. DO NOT touch the glass envelope of the lamp directly; use the polythene cover supplied with the lamp.

#### \* align the lamp correctly

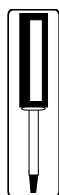
the GX9,5 lampholder is symmetrical which allow the lamp to be fitted either way round. the socket may be tight at first and so some difficulty may be experienced in fitting the lamp. Apply force on both sides of the lamp base evenly: never apply any force to the glass envelope of the lamp.

#### \* close the lampray carefully

do not slam the lampray when closing it: this can cause lamp filament damage.

#### \*center the lamp

To center the lamp fix one of the two M4 screws on the bottom of the lamp tray. (See figure).



### ELECTRICAL CONNECTION

#### \* prepare the cable with care

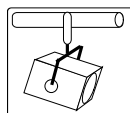
Firecel® heat and fire-resistant mains cable is fitted. This is a specially developed cable for use in public places, and it conforms to the latest international safety regulations. Take care when preparing the cable: the cable includes glass-fibre insulation, and care must be taken not to cut the inner insulation (thus exposing the live wires) when stripping the outer insulation of the cable. **Note:** *In the event you need to replace the cable, please contact one of the authorized Teatro dealers.*

#### \* fit a suitable power plug

ensure that the mains plug is capable of connecting a load of at least 5 Amps, and has a good earth connection. For safe operation it is vital that the metal case of the Profilo 22/40 is securely connected to earth by green/yellow wire. Connect brown wire to the phase, blue wire to neutral pins respectively, and check that all the terminals are tight.

#### \* testing

connect the spotlight to a fused power supply to check that the lamp lights correctly before it is installed in position.



### INSTALLATION

#### \* fit safety guard

the Profilo 22/40 is supplied with a safety wire guard to prevent glass from falling in the unlikely event of a lamp or lens being broken. The lens guard should be fitted in the guide slot closest to the lens, with the safety clip securely in place to retain the guard in position.

#### \* fit shutter blades

Four shutter blades are packed separately in the carton. Fit each one of them in one of the four slots of the central gate assembly.

#### \* fit accessories

Two guide slots are provided in the front of the Profilo 22/40 to fit a colour frame and barndoor attachment or a colour change unit. When installing any of these items ensure they are securely located and retained by the spring clip. When the clip is released a spring at the bottom of the guide slot ejects the colour frame so that it may be removed with one hand.

#### \* iris and gobo accessories

The accessory slot at the top of the central gate assembly accepts either an iris diaphragm, or rotatable gobo holder.

A spring - loaded catch with ball knob holds the accessory securely. The use of the iris diaphragm fully closed is kept for a short time.

**\* check lamp position**

ensure that the Profilo 22/40 is always used with the lamp base downwards. If the attitude of the spotlight is reversed, the lamp seal will overheat and drastically reduce lamp life.

**\* fork rotation**

The fork attachment is designed for simple repositioning to rebalance the spotlight if an accessory (such as a colour change unit) is installed at the front, or if the suspension point has to be changed to mount the spotlight on a stand or low-fixing point. To reposition the fixing point, slacken the central bolt on either side. Slide the fork to the new position, and retighten the nuts.

**\* slacken the pan and tilt movement**

The Profilo 22/40 is fitted with a pre-set tension clamp on the fork to prevent the spotlight "crashing" if the tilt lock is released when the spotlight is out of balance. Check the tension of the clamps before mounting the spotlight in position by unscrewing the tilt lock, and rotating the spotlight. If the movement is stiff, slacken the pre-set locknut on the other side of the fork. Retighten the lock knob.

**\* tilt angle**

the Profilo 22/40 must be mounted so that the tilt (vertical) angle does not exceed above 45° above and below a horizontal projection. The fork must always be attached to a horizontal plane.

**\* focus movement**

The Profilo 22/40 is equipped with adjustable friction lens carriers which are factory set to ensure the lenses are free to move and the lock knob is released, but do not slide uncontrollably if the tilt angle is acute. To adjust the tension, slide open the lens housing door, slacken the M10 lock nut at the top of the lens carrier, and tighten (or slacken) the M10 axle socket grub screw. Retighten the lock nut. During operation lens housing lids are to be kept closed.

**\* secure mounting position**

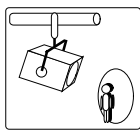
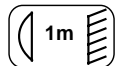
a 12 mm. clear hole is provided in the fork to attach the spotlight to a clamp or bracket. Ensure that fixing point is suitable for the 10,8 Kg. weight of the Profilo 22/40.

**\* secondary fixing point**

it is strongly recommended that a safety chain is attached to the Profilo 22/40 and secured to the main mounting framework, to arrest the fall of the unit in the unlikely event that the primary mounting arrangement fails. A robust loop has been cast into the rear of the Profilo 22/40 to attach the chain.

**\* eliminate fire hazard**

please remember that any theatre luminaire produces heat, and therefore it must be located in a well-ventilated position. Minimum distance from flammable materials: 0,5 m. Minimum distance between light source and object: 1 m.



**OPERATION**

**\* focus**

the sliding focus knob beneath the spotlight unscrew to unlock, and slides forwards to flood position and backwards for spot. Tighten the knob to set the desired focus position.

**\* reflector adjustment**

the knob at the rear of the lamphouse adjusts the output to give a flat beam, or peak centre beam. A flat field is required for gobo or shutter projection, whereas a bright centre beam is preferred for overlapping stage illumination.

**\* colour filter**

all Profilo 22/40 spotlights are supplied with a colour frame which accepts a piece of filter 165X165 mm. A high temperature colour filter is recommended.

**ROUTINE MAINTENANCE**

All spotlights require regular maintenance to ensure optimum performances and maximum light output.

- clear the lenses and the reflector regularly, as even a thin layer of dust will reduce the output, and scatter the beam.
- shields and lenses shall be changed if they have become visibly damaged to such an extent that their effectiveness is impaired, for example by cracks or deep scratches
- the lamp shall be changed if it has become damaged or thermally deformed
- check the movement of the shutter blades, and replace when necessary.
- check the electrical connections, in particular the earth connection
- check for any damage. Replace any damaged components after reference to the spares list overleaf.

**LAMP LIST**

The Profilo 22/40 spotlight will accept any 1000W GX9,5 base lamp. However, for optimum light output, compact source "biplane" filament lamps are recommended. Lower light output and poor beam quality may be seen if a "monoplane" lamp is fitted. The following lamps are recommended for the Profilo 22/40: 1000W T19, 1000W CP70.

**SPARE PARTS**

All parts for the Profilo 22/40, and an exploded parts diagram and component schedule are available on request.



**coemar**

COEMAR reserve the right to alter these specifications without prior notice