

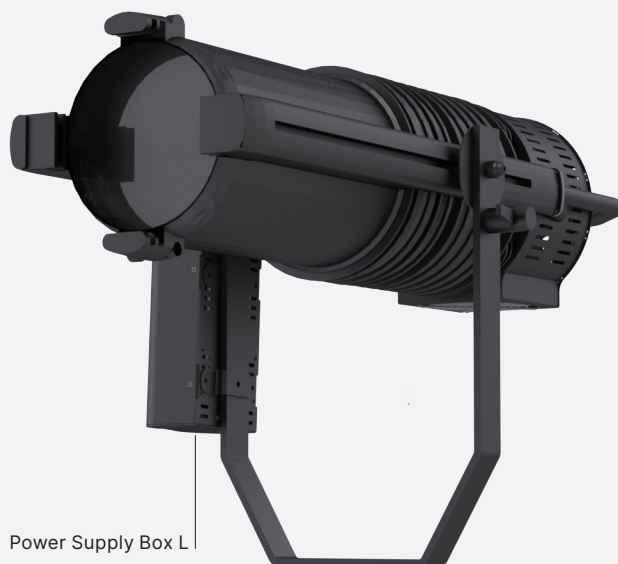
ReLite LED Kit L FS6 HD Theater for ADB Warp

Product code:
F317Q0X0A

Last update:
11/07/2025



LED Group



Power Supply Box L

ReLite LED Kit L FS6 HD Theater for ADB Warp

Introducing

- Fast LED retrofitting for ADB Warp, available in fixed white or with 6 RGBCLA colors, with light output comparable to halogen lamps.

Key Features



- Red, Green, Blue, Cyan, Lime, Amber light source, 20 bit color mixing
- Color mixing with hue and saturation control
- Green-Magenta adjustment



- CRI > 95



- CCT from 2.700 K to 10.000 K (through DMX Chart) or up to 20.000 K (through Display)



- Light output comparable to halogen lamp



- Smooth linear dimming



- Flicker-free ideal for TV/Broadcast installations



- Huge power savings (reduce your power consumption by over 90%) with almost no heat generated



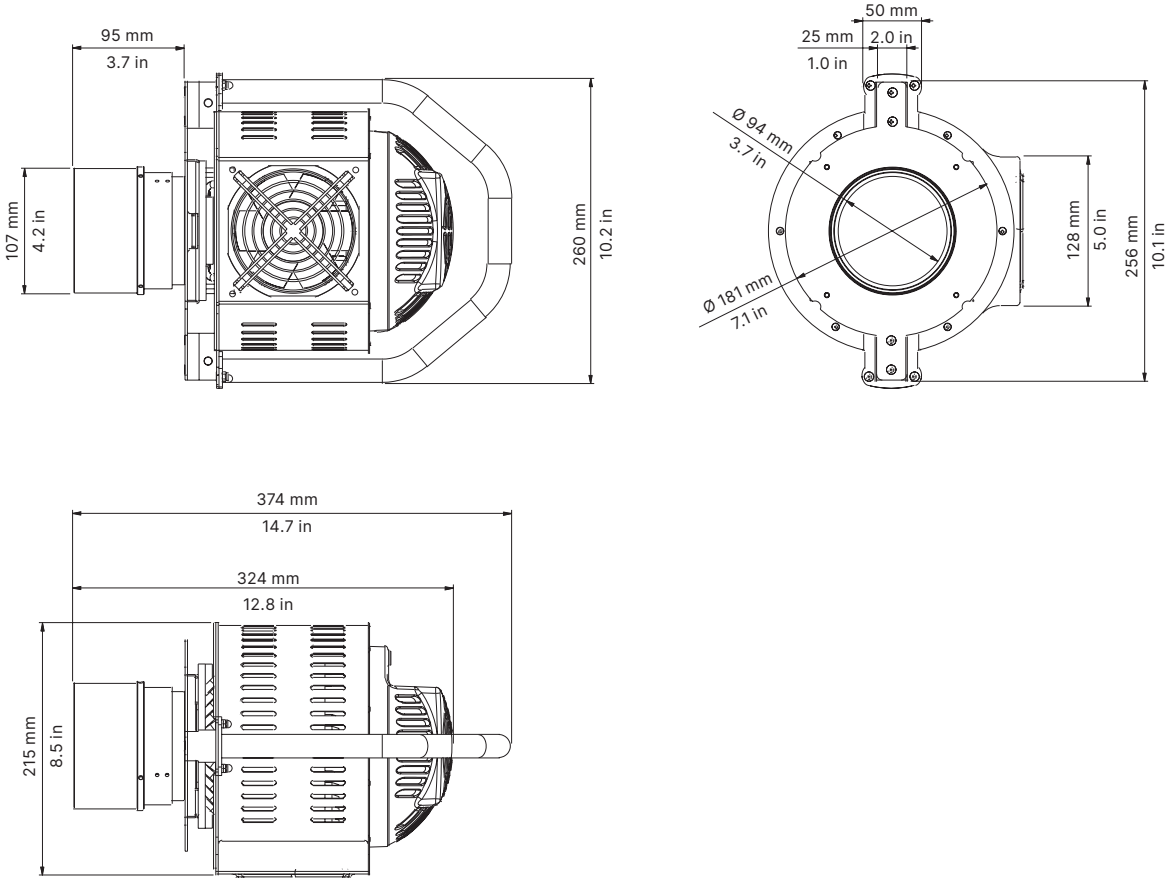
- European Conformity certification

General	
● LED Source	RGBCLA COB LED (Red, Green, Blue, Cyan, Lime, Amber) - Color mixing with hue and saturation control
● CCT Range	2.700 K → 20.000 K
● Color Rendition Average	CRI> 95
● Green-Magenta adjustment	Continuously adjustable from full minus-green to full plus-green
● Dimming	8 or 16 bit, 6 selectable curves: Exponential, Logarithmic, Linear, Halo, Standard and S
● Dimming Smooth Selection	Fast, Slow and Very Slow
● Strobe	Electronic strobe, synchronized, random, pulse effect
● Optical	Zoom range from 13° to 30°
● Camera flicker control/Hz range	Yes: 20.000 Hz
● Calibrated Cob	Yes
● L80 Rating (hours to 80% output)	50.000 Hours
Electrical	
● Voltage Input	90-240 V, 50/60 Hz, auto-sensing
● Power Consumption	450 W Maximum
● Power Connection	In and Out PowerCON TRUE1
● Data Connection	In and Out DMX 5 pin locking XLR connectors
Thermal	
● Fan (controllable)	Yes, 4 different settings: Silent, Studio, Auto, DMX regulated
Control	
● Protocols	DMX-512, RDM (Remote Device Management), Wireless (optional by LumenRadio)
● RDM configuration	Yes
● DMX Channels	16 / 7 / 1 / Studio / RGB / Fine RGB / Sunrise Mode
● Display	Graphic OLED
● Software Upload	Through DMX input (With RDM interface code AC10011A001)
Physical	
● Yoke	With clamp or customized fixing system for installation on the fixture
● IP Rating	IP20
● Color options	Black (standard)

16 Channels	7 Channels	1 Channel	Sunrise Mode
01 → Master Dimmer	01 → Master Dimmer	01 → Master Dimmer - Color	01 → Master Dimmer
02 → Red	02 → Red	Temperature Settable by Display	02 → Dimmer Fine
03 → Green	03 → Green		03 → Proportional CCT
04 → Blue	04 → Blue		04 → Step CCT
05 → Cyan	05 → Cyan	Fine RGB Mode	05 → Green Saturation
06 → Lime	06 → Lime	01 → Master Dimmer	06 → Special Function
07 → Amber	07 → Amber	02 → Dimmer Fine	
08 → Strobe Effect		03 → Red	
09 → Dimmer Fine		04 →Red Fine	Studio Mode
10 → Special Function	RGB Mode	05 → Green	01 → Master Dimmer
11 → Red Tone	01 → Master Dimmer	06 → Green Fine	02 → White Tone
12 → Green Tone	02 → Dimmer Fine	07 → Blue	03 → Green Saturation
13 → Blue Tone	03 → Red	08 → Blue Fine	04 → Saturation
14 → White Tone	04 → Green	09 → White Tone	05 → Hue
15 → Green Saturation	05 → Blue	10 → Saturation	06 → Dimmer Fine
16 → Saturation	06 → White Tone	11 → Strobe	07 → Special Function
	07 → Saturation	12 → Special Function	
	08 → Strobe Effect		
	09 → Special Function		

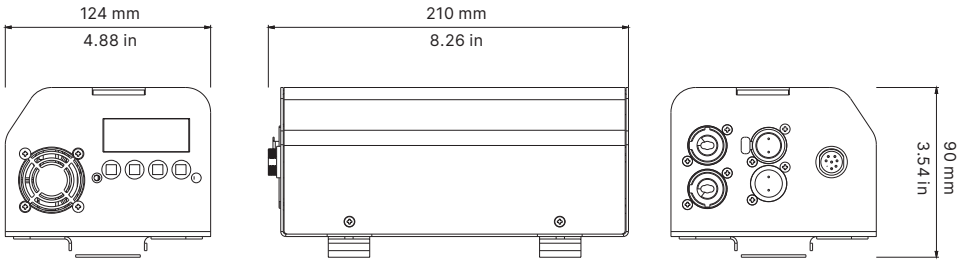
LED Group

Lenght	Width	Height	Weight
374 mm 14.7 in	256 mm 10.1 in	215 mm 8.5 in	6 Kg 13.2 lbs



Power Supply Box L

Lenght	Width	Height	Weight
210 mm 8.26 in	124 mm 4.88 in	90 mm 3.54 in	2.5 Kg 5.5 lbs



● Coemar Lighting S.r.l.

Via Carpenedolo, 90
46043, Castiglione delle Stiviere (MN) – Italy

P. +39 0376 1514412
M1. info@coemar.com
M2. service@coemar.com
W. coemar.com

P.iva – C.f. 02415330204

