

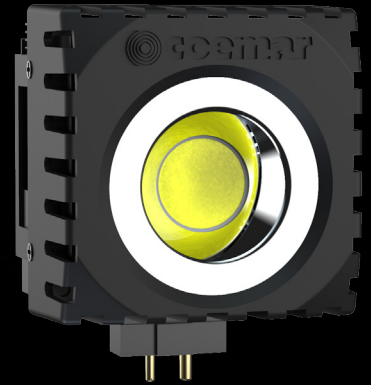


# Mini ReLite Led T/D

Product code: F040A070A (T CRI 97) | F040B070A (D CRI 97)  
 F040C070A (T CRI 90) | F040D070A (D CRI 90)

## KEY FEATURES

- LED retrofit lamp
- Tungsten or Daylight COB LED
- Linear dimming from 1% to 100%: the stability of the fixture is guaranteed starting from 30/35 % of the dimmer channel (depending on the installation conditions)
- Full-range dimming on traditional dimmers
- Guaranteed flicker-free (dimming with constant current)
- Thermal protection



## SPECIFICATIONS

- Fixed white CCT: 3.200 K or 5.600 K
- Linear dimming from 1% to 100%: the stability of the fixture is guaranteed starting from 30/35 % of the dimmer channel (depending on the installation conditions)
- Full-range dimming on your existing AC dimmers
- Flicker-free operation (dimming with constant current)
- IP rating: 20
- Thermal protection
- CE approved
- Instantly upgrade an existing Arri, ADB or DeSisti (and more)

## LIGHT SOURCE

- Tungsten or Daylight COB LED (CRI 90 or 97)
- Average LED lifetime: a minimum of 80% of the initial luminous flux will be maintained after approx. 50.000 hours of usage (50.000 LM80)

## PHYSICAL SIZE

- Depth: 73.7 mm (2.90 in)
- Width: 76.5 mm (3.01 in)
- Height: 77 mm (3.03 in)
- Height with connectors: 96 mm (3.78 in)
- Weight: 0.3 Kg (0.66 lbs)

## ELECTRICAL SPECIFICATIONS AND CONNECTIONS

- Power supply: 90 -240 V, auto-sensing, 50/60 Hz
- Max power consumption: 70 W
- Power consumption: 0.31 A at 230 V, 0.65 at 110 V –  $\cos\phi$  0.98
- Pin connectors: GX9.5 – GY9.5 – G22

## DRAWING SIZE

