



MINI RELITE
DAYLIGHT CRI 90
(INSTALLED ON ARRI 1000W)

PHOTOMETRIC
MEASUREMENTS

SPECTRUM TEST REPORT

FLOOD ANGLE

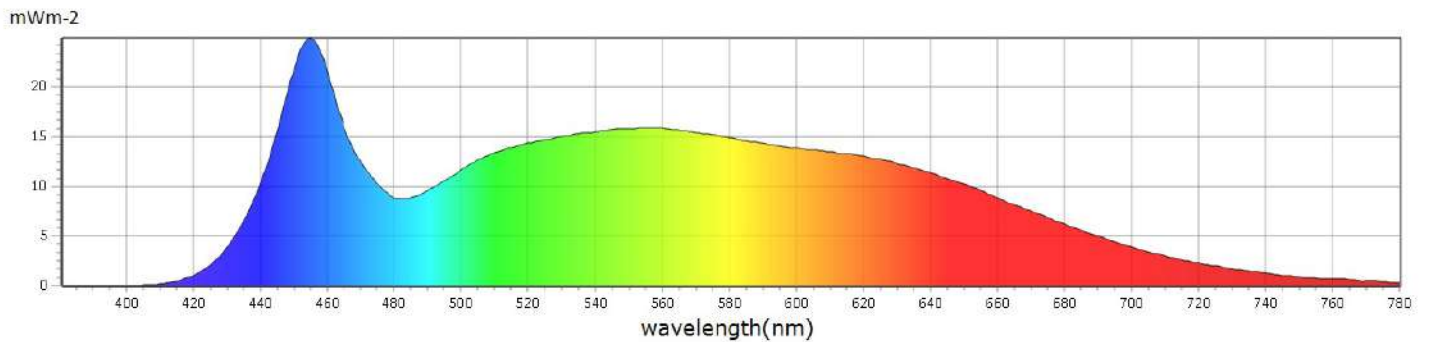
Information

User :	Measure Time :11:38:49
Model NO. : MK350S PREMIUM	Light Source :Mini Relite Led
Memo :	
Zoom Massimo	

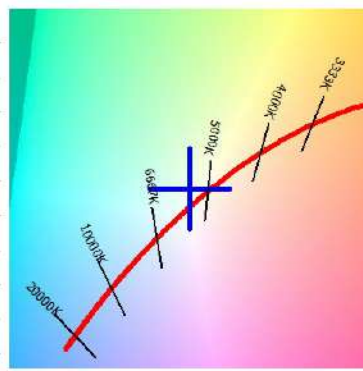
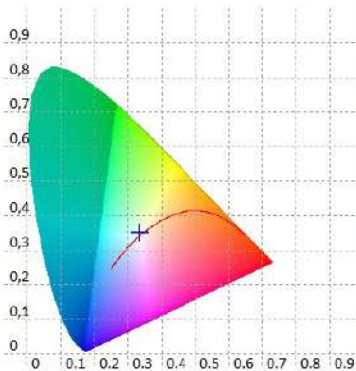
BASIC

CCT	: 5477 K
x	: 0,3330
y	: 0,3527
LambdaD	: 553 nm
LambdaP	: 454 nm

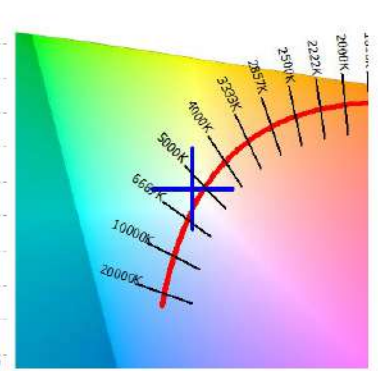
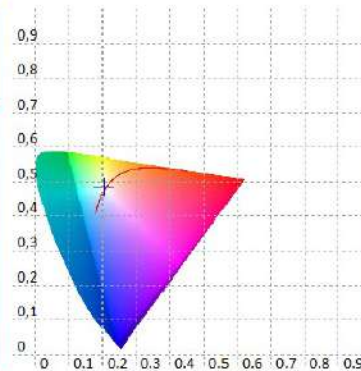
Spectrum



CIE1931



CIE1976



Features

CCT : 5477 K	x10 : 0,3381	delta-x : 0,0001	LambdaD : 553 nm	PPFD : 15,66 $\mu\text{molm}^{-2}\text{s}^{-1}$	S/P : 2,13	R3 : 94,3	R10 : 80,2
LUX : 1044 lx	y10 : 0,3536	delta-y : 0,0112	LambdaP : 454 nm	PFD : 16,39 $\mu\text{molm}^{-2}\text{s}^{-1}$	IRR : 3,522	R4 : 88,3	R11 : 87,2
I-Time : 8400 us	u'10 : 0,2060	delta-u' : -0,0042	Purity : 5,72%	PFD-B : 3,729 $\mu\text{molm}^{-2}\text{s}^{-1}$	CQS : 88,5	R5 : 87,5	R12 : 66,7
x : 0,3330	v'10 : 0,4846	delta-v' : 0,0056	fc : 97,02	PFD-G : 6,796 $\mu\text{molm}^{-2}\text{s}^{-1}$	CRI : 89,1	R6 : 87,6	R13 : 88,8
y : 0,3527	X : 985,69	Duv : 0,0056	Rf : 88,7	PFD-R : 5,133 $\mu\text{molm}^{-2}\text{s}^{-1}$	TLCI : 90,8	R7 : 93,5	R14 : 97,6
u' : 0,2029	Y : 1043,96	MEL : 954,6 lx	Rg : 96,7	PFD-UV : 0,0001 $\mu\text{molm}^{-2}\text{s}^{-1}$	R1 : 87,8	R8 : 82,3	R15 : 84,9
v' : 0,4834	Z : 929,97	LambdaPV : 24,94	GAI : 85,3	PFD-FR : 0,7300 $\mu\text{molm}^{-2}\text{s}^{-1}$	R2 : 91,9	R9 : 49,5	

SPECTRUM TEST REPORT FLOOD ANGLE

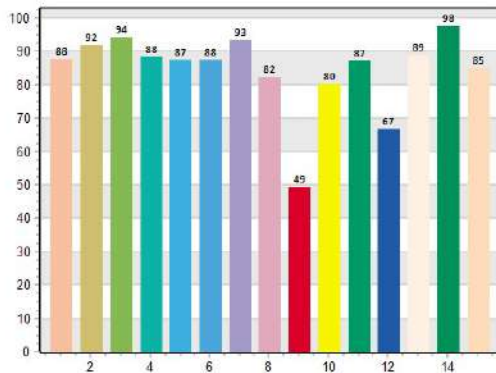
Information

User :	Measure Time :11:38:49
Model NO. : MK350S PREMIUM	Light Source :Mini Relite Led
Memo :	
Zoom Massimo	

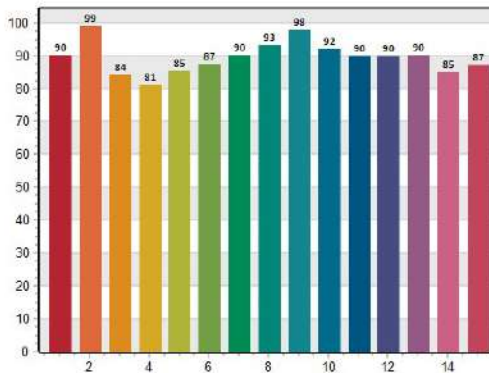
BASIC

CCT	: 5477 K
x	: 0,3330
y	: 0,3527
LambdaD	: 553 nm
LambdaP	: 454 nm

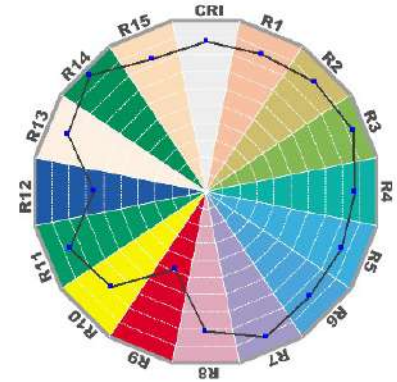
CRI: 89,14



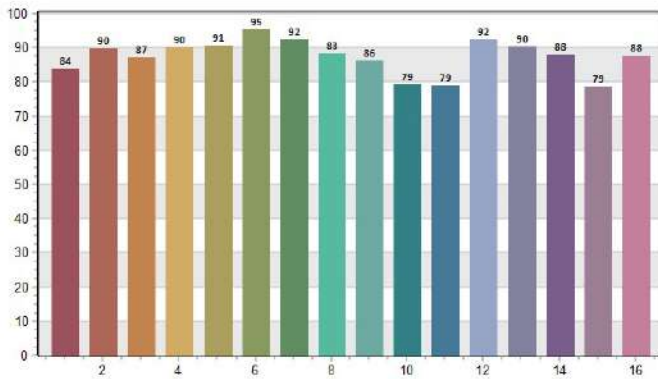
CQS: 88,53



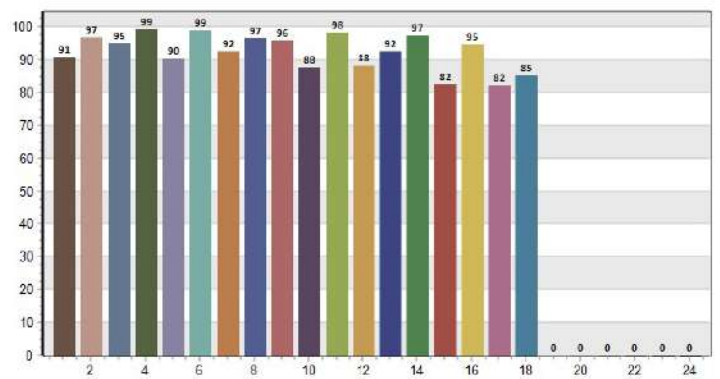
CRI-2



TM30: 88,67



TLCI: 90,82



CRI values, only R1-R8 are used to calculate final CRI

R1	R2	R3	R4	R5	R6	R7	R8	R9	R10	R11	R12	R13	R14	R15
87,8	91,8	94,3	88,3	87,5	87,6	93,5	82,3	49,5	80,2	87,2	66,7	88,8	97,6	84,9

TM30 C values, 16 binned values out of total of 99 C values

C1	C2	C3	C4	C5	C6	C7	C8	C9	C10	C11	C12	C13	C14	C15	C16
83,9	89,7	87,0	90,1	90,6	95,3	92,3	88,2	86,2	79,2	79,0	92,3	90,4	88,1	78,7	87,7

CQS Q values

Q1	Q2	Q3	Q4	Q5	Q6	Q7	Q8	Q9	Q10	Q11	Q12	Q13	Q14	Q15
90,1	99,0	84,2	81,1	85,5	87,4	90,2	93,3	97,7	92,1	90,0	90,0	90,3	84,9	87,1

SPECTRUM TEST REPORT

SPOT ANGLE

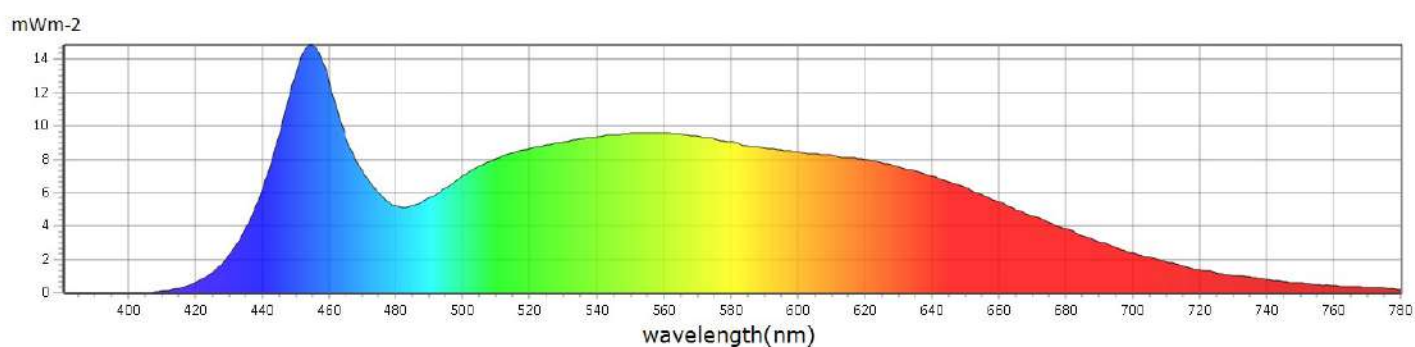
Information

User :	Measure Time :11:37:56
Model NO. : MK350S PREMIUM	Light Source :Mini Relite Led
Memo :	
Zoom Minimo	

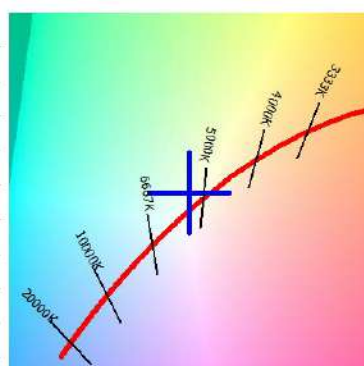
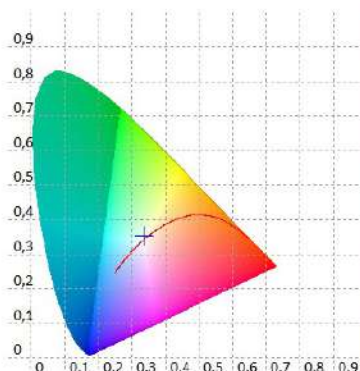
BASIC

CCT	: 5383 K
x	: 0,3354
y	: 0,3547
LambdaD	: 559 nm
LambdaP	: 453 nm

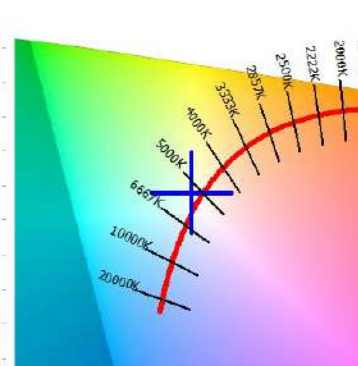
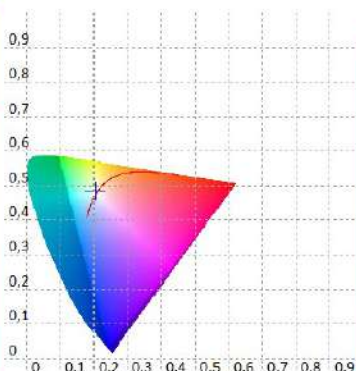
Spectrum



CIE1931



CIE1976



Features

CCT : 5383 K	x10 : 0,3406	delta-x : 0,0002	LambdaD : 559 nm	PPFD : 9,467 umol/m ² s-1	S/P : 2,11	R3 : 94,1	R10 : 79,9
LUX : 631,9 lx	y10 : 0,3553	delta-y : 0,0112	LambdaP : 453 nm	PFD : 9,919 umol/m ² s-1	IRR : 2,128	R4 : 88,4	R11 : 87,3
I-Time : 14000 us	u'10 : 0,2070	delta-u' : -0,0041	Purity : 7,15%	PFD-B : 2,209 umol/m ² s-1	CQS : 88,6	R5 : 87,5	R12 : 66,7
x : 0,3354	v'10 : 0,4858	delta-v' : 0,0056	fc : 58,72	PFD-G : 4,111 umol/m ² s-1	CRI : 89,1	R6 : 87,4	R13 : 88,7
y : 0,3547	X : 597,58	Duv : 0,0055	Rf : 88,7	PFD-R : 3,148 umol/m ² s-1	TLCI : 90,9	R7 : 93,5	R14 : 97,5
u' : 0,2037	Y : 631,86	MEL : 569,4 lx	Rg : 96,9	PFD-UV : 0,0005 umol/m ² s-1	R1 : 87,8	R8 : 82,4	R15 : 85,0
v' : 0,4847	Z : 552,12	LambdaPV : 14,86	GAI : 84,9	PFD-FR : 0,4517 umol/m ² s-1	R2 : 91,7	R9 : 49,8	

SPECTRUM TEST REPORT

SPOT ANGLE

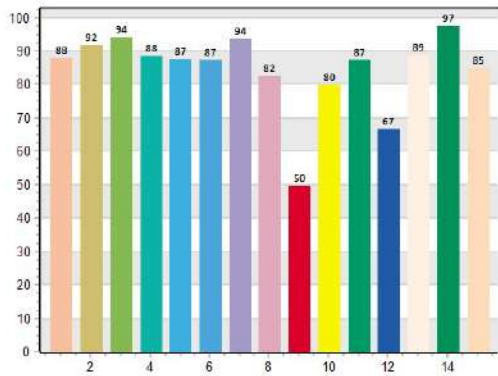
Information

User :	Measure Time :11:37:56
Model NO. : MK350S PREMIUM	Light Source :Mini Relite Led
Memo :	
Zoom Minimo	

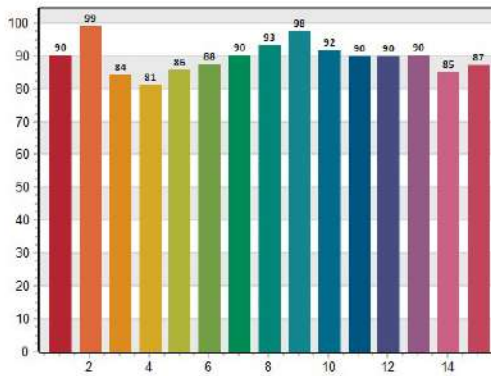
BASIC

CCT	: 5383 K
x	: 0,3354
y	: 0,3547
LambdaD	: 559 nm
LambdaP	: 453 nm

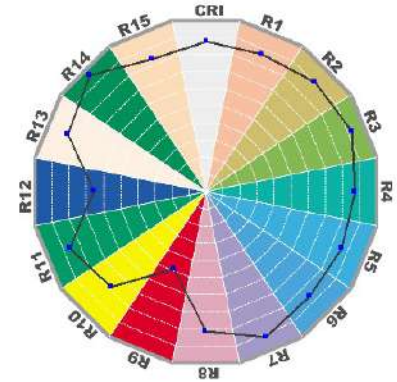
CRI: 89,10



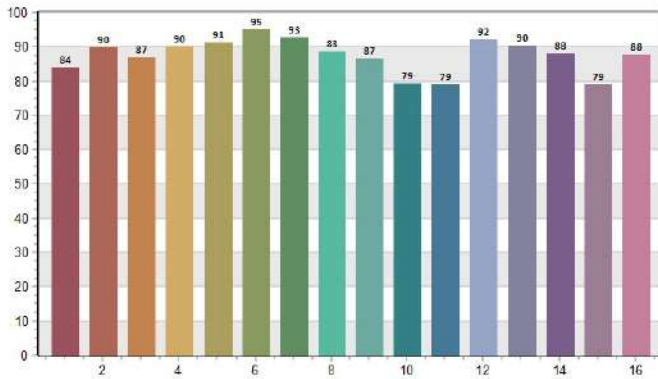
CQS: 88,55



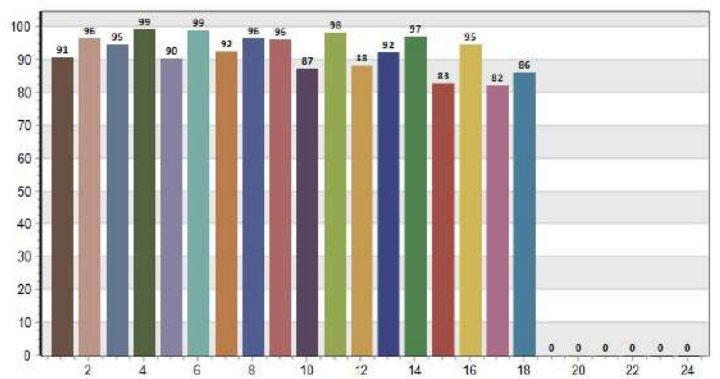
CRI-2



TM30: 88,72



TLCI: 90,86



CRI values, only R1-R8 are used to calculate final CRI

R1	R2	R3	R4	R5	R6	R7	R8	R9	R10	R11	R12	R13	R14	R15
87,8	91,7	94,1	88,4	87,5	87,4	93,5	82,4	49,8	79,9	87,3	66,7	88,7	97,5	85,0

TM30 C values, 16 binned values out of total of 99 C values

C1	C2	C3	C4	C5	C6	C7	C8	C9	C10	C11	C12	C13	C14	C15	C16
84,0	89,7	86,8	90,0	91,3	95,0	92,6	88,5	86,5	79,3	78,8	92,1	90,5	88,1	79,0	87,8

CQS Q values

Q1	Q2	Q3	Q4	Q5	Q6	Q7	Q8	Q9	Q10	Q11	Q12	Q13	Q14	Q15
90,3	99,0	84,0	81,2	85,6	87,6	90,3	93,4	97,6	91,9	89,9	89,9	90,3	85,0	87,2

TM30 TEST REPORT

FLOOD ANGLE

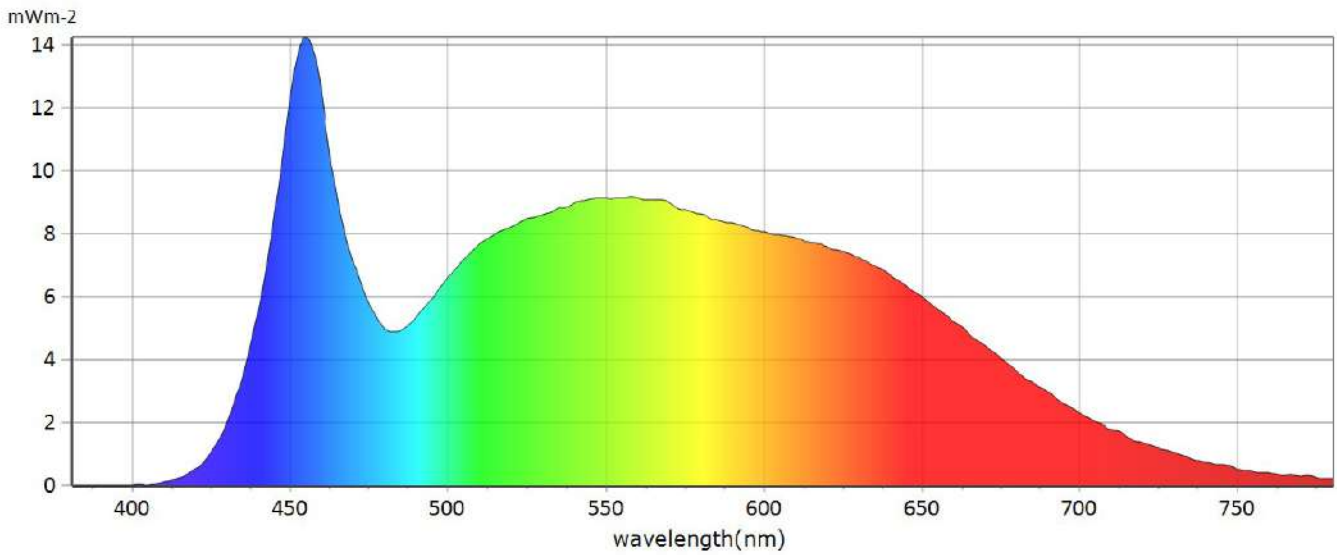
Information

User :	Measure Time :09:41:00
Model NO. : MK350S PREMIUM	Light Source :Mini Relite Led
Memo :	
Zoom Max	

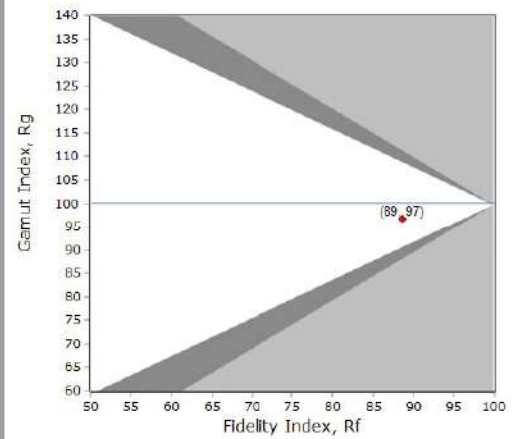
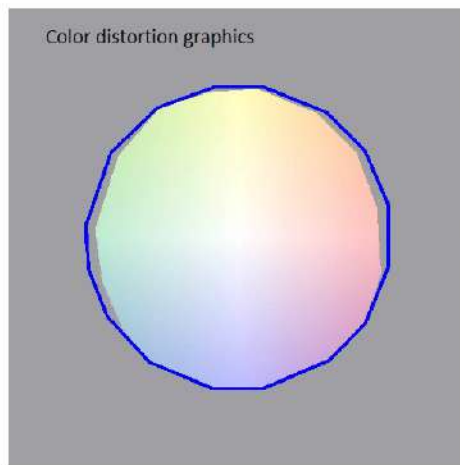
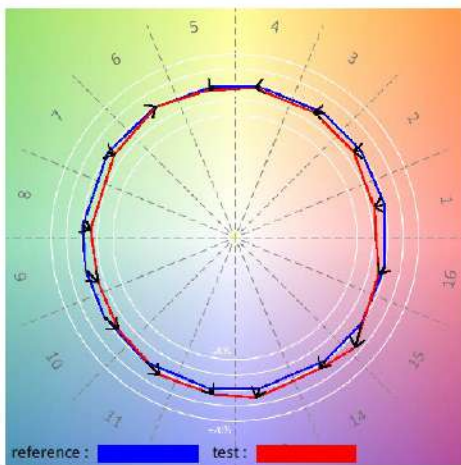
Rf 88,6
Fidelity index Rf

Rg 96,7
Gammut index Rg

Spectrum



General Color Rendition



TM30 TEST REPORT

FLOOD ANGLE

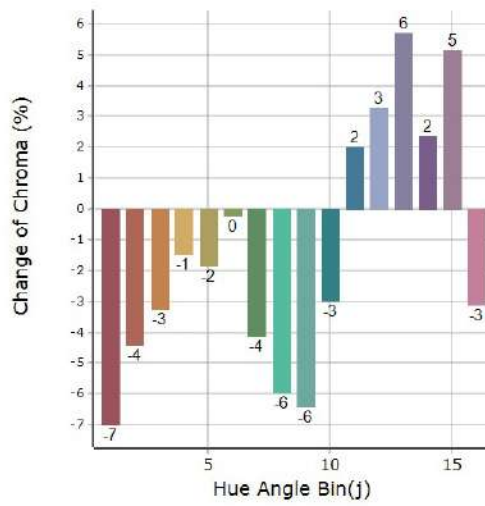
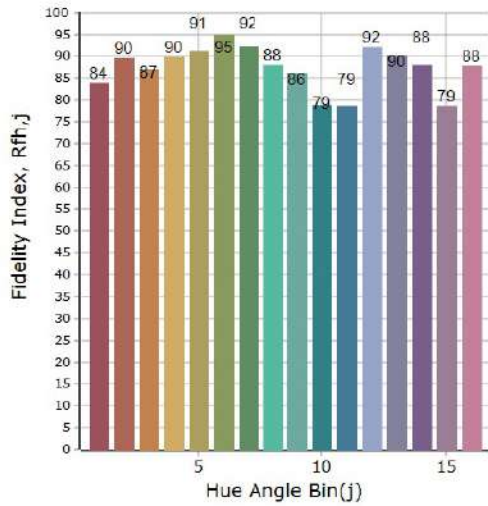
Information

User :	Measure Time :09:41:00
Model NO. : MK350S PREMIUM	Light Source :Mini Relite Led
Memo :	
Zoom Max	

Rf 88,6
Fidelity index Rf

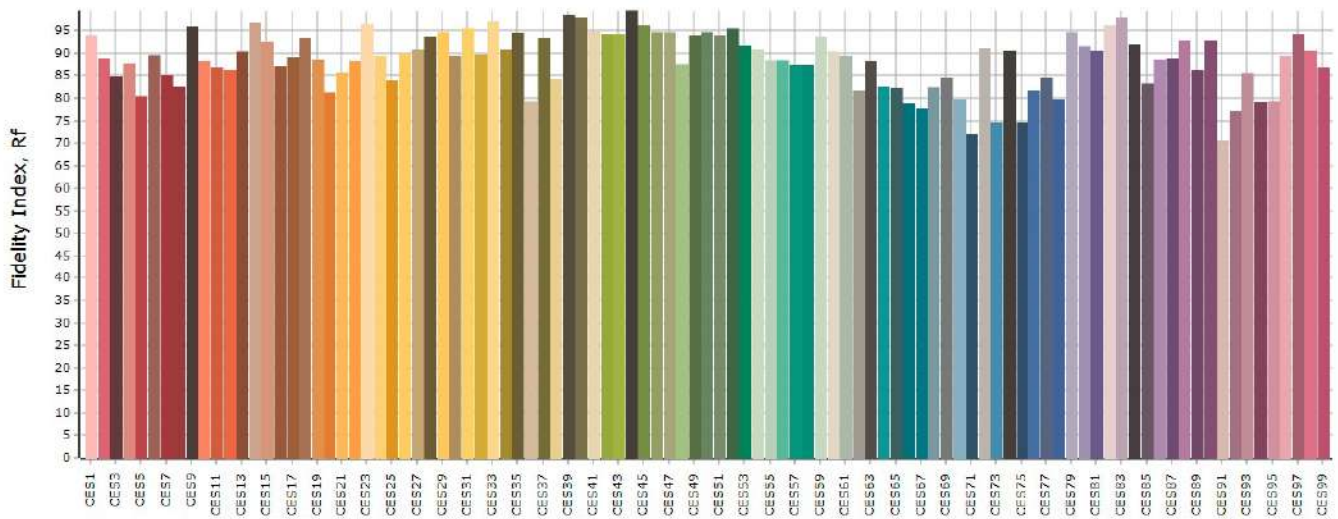
Rg 96,7
Gammut index Rg

Color Rendition by Hue



Hue Bin	Rf	Graphic shifts (%)	
		Chroma	Hue
1	83,9	-7,0%	-0,4%
2	89,6	-4,4%	2,9%
3	86,8	-3,2%	5,6%
4	89,9	-1,5%	3,3%
5	91,2	-1,8%	2,4%
6	94,9	-0,2%	-1,0%
7	92,3	-4,1%	-1,2%
8	88,1	-6,0%	1,4%
9	86,1	-6,4%	9,2%
10	78,9	-3,0%	11,5%
11	78,8	2,0%	11,9%
12	92,2	3,3%	3,2%
13	90,4	5,7%	-2,9%
14	88,1	2,4%	-5,8%
15	78,8	5,2%	-15,5%
16	87,7	-3,1%	-6,0%

Color Fidelity by Sample



TM30 TEST REPORT

SPOT ANGLE

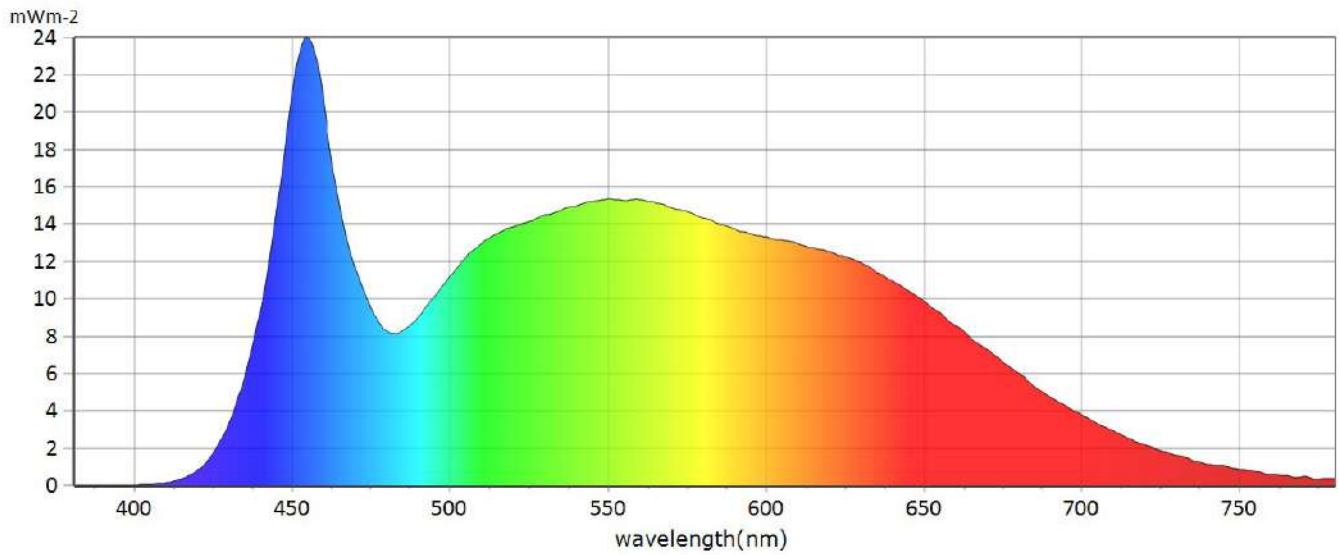
Information

User :	Measure Time :09:40:23
Model NO. : MK350S PREMIUM	Light Source :Mini Relite Led
Memo :	
Zoom Minimo	

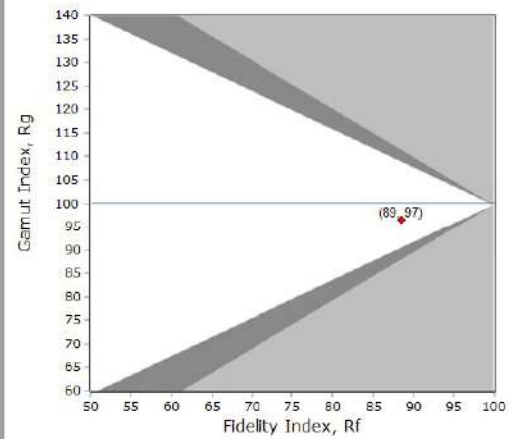
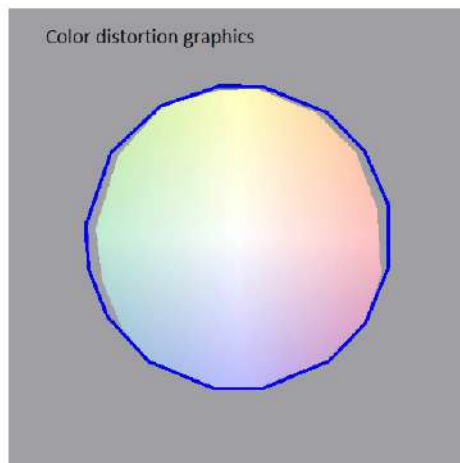
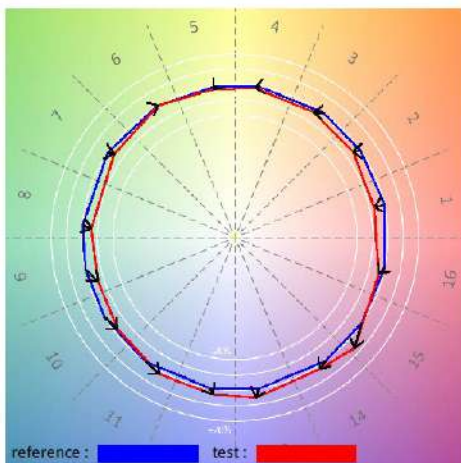
Rf 88,5
Fidelity index Rf

Rg 96,6
Gammut index Rg

Spectrum



General Color Rendition



TM30 TEST REPORT

SPOT ANGLE

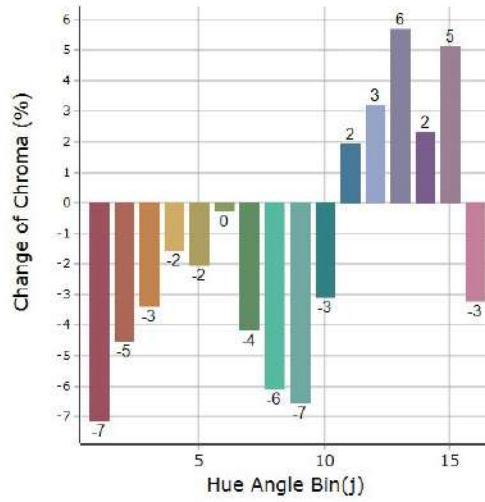
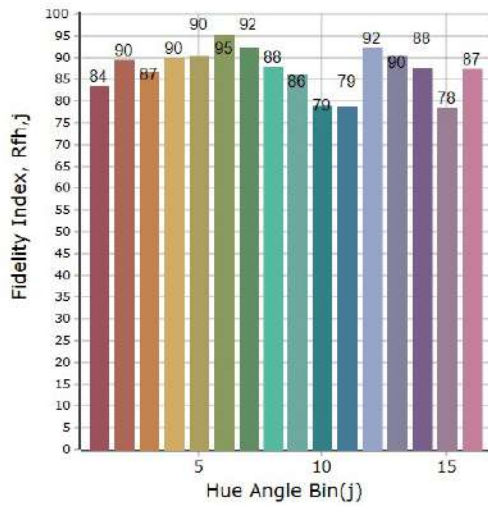
Information

User :	Measure Time :09:40:23
Model NO. : MK350S PREMIUM	Light Source :Mini Relite Led
Memo :	
Zoom Minimo	

Rf 88,5
Fidelity index Rf

Rg 96,6
Gammut index Rg

Color Rendition by Hue



Hue Bin	Rf	Graphic shifts (%)	
		Chroma	Hue
1	83,6	-7,1%	-0,5%
2	89,5	-4,5%	2,8%
3	86,8	-3,3%	5,5%
4	90,0	-1,5%	3,2%
5	90,5	-2,0%	2,4%
6	95,2	-0,2%	-0,8%
7	92,2	-4,2%	-1,3%
8	87,9	-6,1%	1,3%
9	86,1	-6,5%	9,1%
10	79,0	-3,1%	11,5%
11	78,7	1,9%	11,9%
12	92,3	3,2%	3,1%
13	90,4	5,7%	-3,1%
14	87,7	2,3%	-6,0%
15	78,4	5,1%	-15,8%
16	87,3	-3,2%	-6,2%

Color Fidelity by Sample

