

Product Guide 2020



Product Guide

Index

Ellipsoidal



PAG. 4 :: 24

Soft / Cyc



PAG. 62 :: 68

Linear



PAG. 69 :: 72

Retrofit Lamp



PAG. 25 :: 31

Effect



PAG. 73 :: 75

Fresnel / PC



PAG. 33 :: 43

Classical Theatrical



PAG. 76 :: 79

Moving Head



PAG. 44 :: 48

Controller



PAG. 80 :: 86

Wash



PAG. 49 :: 61

Ellipsoidal



LEDko, the spot profile lighting fixture winner of major awards with Coemar patented technologies.

Available in the following versions:

- **LEDko FullSpectrum 6 HD**: RGBWLA LEDs module
- **LEDko FullSpectrum 2**: RGBW LEDs module
- **LEDko VariWhite 2**: variable white fixture from 2.700 to 6.500 K
- **LEDko T and D**: Tungsten or Daylight COB LED
- **LEDko T and D Studio**: Tungsten or Daylight COB LED - high CRI (CRI 96)
- **LEDko DIM**
- **LEDko Basic**

LEDko FullSpectrum 6 HD

F012Q000A Black



KEY FEATURES

- **LED profile spot**
- **RGBWLA homogeneous color mixing** (no color shift during dimming)
- **CCT proportional control from 2.700 to 6.500 K** (CRI > 90)
- **Preset and customizable color libraries**
- **20 bit color mixing and dimming curves** digitally processed at 20 bit
- **4 dimming curves** selectable (Exponential, Logarithmic, Linear and Halo)
- **Dim-to-Warm function**
- **Four blade framing system**, each shutter blade is adjustable for radial position and angle
- **Fan setting with 4 different options** (Low, Auto, Studio and DMX regulated)
- **Guaranteed flicker-free operation** (20.000 Hz refresh rate LED)
- **Full range of fixed and zoom optics** available
- **Compatible with soft edge lenses** (Fresnel or PC) and with various lens tubes already on the market

SPECIFICATIONS

- 20 bit color mixing through 6 colors: Red, Green, Blue, White, Lime, Amber
- CCT: all whites from 2.700 to 6.500 K
- Customization of the preset color libraries
- Green-Magenta adjustment: continuously adjustable from full minus-green to full plus-green
- Four blade framing system, each shutter blade is adjustable for radial position and angle
- Guaranteed flicker-free operation (20.000 Hz LED refresh rate)
- Electronic 16 bit dimming with 4 selectable curves (exponential, logarithmic, linear and halo) digitally processed at 20 bit
- Synchronized, random or pulse electronic strobe
- Dim-to-Warm function
- Fan setting with 4 different options: low, auto, studio, DMX regulated
- Cooling system digitally controlled in real time in all its parameters
- CE approved
- IP rating: 20

PHYSICAL SIZE

- Length: 362 mm (14.2 in)
- Length with optic Profile Zoom 28°/40°: 601 mm (23.6 in)
- Height: 189 mm (7.4 in)
- Height with bracket: 372 mm (14.6 in)
- Width: 212 mm (8.3 in)
- Weight without optic: 5.7 kg (12.5 lbs)
- Weight with Profile Zoom 28°/40° optic: 8.2 Kg (18.1 lbs)

LIGHT SOURCE

- RGBWLA LEDs module (CRI > 90)
- Average LED lifetime: a minimum of 80% of the initial luminous flux will be maintained after approx. 50.000 hours of usage (50.000 LM80)

CONTROL PROTOCOL AND PROGRAMMING

- USITT DMX512A
- DMX channels: 16 / 7 / 1 / Studio mode / RGB mode
- Setting, addressing, testing and measurements via LCD display
- RDM (Remote Device Management)

ELECTRICAL SPECIFICATIONS AND CONNECTIONS

- AC power: 80-264 V, auto-sensing, 50/60 Hz
- In and Out PowerCon connectors to feed up to 8 (at 230 V) or 4 (at 115 V) fixtures
- Max power consumption: 220 W
- Power consumption: 1.06 A at 230 V, 2.13 A at 115 V - cosφ 0,9
- DMX data in/out: 5 pin locking XLR

ACCESSORIES

- Color frame
- Magnetic / metal gobo holder
- Gobo holder for glass gobo or iris slot
- Iris
- Donut
- Half top hat / top hat
- 4-leaf barndoor
- Flight case
- Optics: Profile/Soft Profile, Zoom Profile, Lens tube (various angles available)

LEDko FullSpectrum 2

F011H000A **Black**



KEY FEATURES

- **LED profile spot**
- **RGBW color mixing**
- **3.200 - 10.000 K Continuously Variable Correlated Color Temperature** with color rendering index greater than 90
- **Plus minus green correction**
- **Color saturation adjustment**
- **Uniform light beam with no multi-color shadows**
- **Also compatible with new Fresnel and PC optics with shutters (Soft Profile)**
- **Guaranteed flicker-free operation (DMX controlled PWM frequency)**
- **Smooth 16 bit dimmer**
- **The fan setting allows three options: low, auto, DMX regulated**
- **Instant gobos from standard printers**

SPECIFICATIONS

- RGB+W color mixing with hue and saturation control
- CCT: all whites from 3.200 to 10.000 K
- Green-Magenta adjustment: continuously adjustable from full minus-green to full plus-green
- RGBW built-in libraries
- Four blade framing system, each shutter blade is adjustable for radial position and angle
- Electronic 16 bit dimming with 3 selectable curves (exponential, logarithmic, linear)
- Synchronized, random or pulse electronic strobe
- Flicker-free operation with LEDs frequency controlled via DMX from 600 to 19.000 Hz
- Fan setting with 3 different options (low, auto, DMX regulated)
- CE approved
- IP rating: 20

PHYSICAL SIZE

- Length: 362 mm (14.2 in)
- Length with optic Profile Zoom 28°/40°: 601 mm (23.6 in)
- Height: 189 mm (7.4 in)
- Height with bracket: 372 mm (14.6 in)
- Width: 212 mm (8.3 in)
- Weight without optic: 6 kg (13.2 lbs)
- Weight with Profile Zoom 28°/40° optic: 8.5 kg (18.7 lbs)

LIGHT SOURCE

- RGBW LEDs module (CRI > 90)
- Average LED lifetime: a minimum of 80% of the initial luminous flux will be maintained after approx. 50.000 hours of usage (50.000 LM80)

CONTROL PROTOCOL AND PROGRAMMING

- USITT DMX512A
- DMX channels: 14 / 8 / 7 / 4 / 1
- Setting, addressing, testing and measurements via LEDs display
- RDM (Remote Device Management)

ELECTRICAL SPECIFICATIONS AND CONNECTIONS

- AC power: 90-264 V, auto-sensing, 50/60 Hz
- In and Out PowerCon connectors to feed up to 8 (at 230 V) or 4 (at 115 V) fixtures
- Max power consumption: 200 W
- Power consumption: 0.89 A at 230 V, 1.77 A at 115 V - cosφ 0,98
- DMX data in/out: 5 pin locking XLR

ACCESSORIES

- Color frame
- Magnetic / metal gobo holder
- Gobo holder for glass gobo or iris slot
- Iris
- Donut
- Half top hat / top hat
- 4-leaf barndoor
- Flight case
- Optics: Profile/Soft Profile, Zoom Profile, Lens tube (various angles available)

LEDko VariWhite 2

F011G000A **Black**



KEY FEATURES

- **LED profile spot**
- **2.700 - 6.500 K Continuously Variable Correlated Color Temperature**
- **CRI ≥ 95 (up to 97)**
- **Also compatible with new Fresnel and PC optics with shutters (Soft Profile)**
- **Guaranteed flicker-free operation (DMX controlled PWM frequency)**
- **PowerCon In/Out, up to 8 fixtures powered in series for easy installations**
- **The fan setting allows three options: low, auto and DMX regulated**
- **Instant gobos from standard printers**

SPECIFICATIONS

- CCT proportional control from 2.700 to 6.500 K
- Four blade framing system, each shutter blade is adjustable for radial position and angle
- Electronic 16 bit dimming with 3 selectable curves (exponential, logarithmic, linear)
- Synchronized, random or pulse electronic strobe
- Flicker-free operation with LEDs frequency controlled via DMX from 600 to 19.000 Hz
- Fan setting with 3 different options (low, auto, DMX regulated)
- CE approved
- IP rating: 20

PHYSICAL SIZE

- Length: 362 mm (14.2 in)
- Length with Profile Zoom 28°/40° optic: 601 mm (23.6 in)
- Height: 189 mm (7.4 in)
- Height with bracket: 372 mm (14.6 in)
- Width: 212 mm (8.3 in)
- Weight: 6 kg (13.2 lbs)
- Weight with Profile Zoom 28°/40° optic: 8.5 kg (18.7 lbs)

LIGHT SOURCE

- 210 W variable white LEDs module (CRI ≥ 95 up to 97, TLCI 98)
- Average LED lifetime: a minimum of 80% of the initial luminous flux will be maintained after approx. 50.000 hours of usage (50.000 LM80)

CONTROL PROTOCOL AND PROGRAMMING

- USITT DMX512A
- DMX channels: 6 / 2 / 1
- Setting, addressing, testing and measurements via LEDs display
- RDM (Remote Device Management)

ELECTRICAL SPECIFICATIONS AND CONNECTIONS

- AC power: 90-264 V, auto-sensing, 50/60 Hz
- In and Out PowerCon connectors to feed up to 8 (at 230 V) or 4 (at 115 V) fixtures
- Max power consumption: 210 W
- Power consumption: 1 A at 230 V, 2.03 A at 115 V - cosφ 0,9
- DMX data in/out: 5 pin locking XLR

ACCESSORIES

- Color frame
- Magnetic / metal gobo holder
- Gobo holder for glass gobo or iris slot
- Iris
- Donut
- Half top hat / top hat
- 4-leaf barndoor
- Flight case
- Optics: Profile/Soft Profile, Zoom Profile, Lens tube (various angles available)

LEDko T

CRI 80 / 90

T CRI 80
F011E000A Black

T CRI 90
F011C000A Black



KEY FEATURES

- **LED profile spot**
- **Light source: Tungsten COB LED**
- **Soft profiling thanks to Fresnel and PC optics (Coemar patent)**
- **Smooth 16 bit dimmer**
- **Guaranteed flicker-free operation (DMX controlled PWM frequency)**
- **The fan setting allows three options: low, auto and DMX regulated**
- **Instant gobos from standard printers**

SPECIFICATIONS

- Fixed white CCT: 3.200 K
- Four blade framing system, each shutter blade is adjustable for radial position and angle
- Electronic 16 bit dimming with 3 selectable curves (exponential, logarithmic, linear)
- Synchronized, random or pulse electronic strobe
- Flicker-free operation with LEDs frequency controlled via DMX from 600 to 19.000 Hz
- Fan setting with 3 different options (low, auto, DMX regulated)
- CE approved
- IP rating: 20

PHYSICAL SIZE

- Length: 362 mm (14.2 in)
- Length with Profile Zoom 28°/40° optic: 601 mm (23.6 in)
- Height: 189 mm (7.4 in)
- Height with bracket: 372 mm (14.6 in)
- Width: 212 mm (8.3 in)
- Weight: 6 kg (13.2 lbs)
- Weight with Profile Zoom 28°/40° optic: 8.5 Kg (18.7 lbs)

LIGHT SOURCE

- Tungsten COB LED (CRI 80, TLCI 65 / CRI 90, TLCI 88)
- Average LED lifetime: a minimum of 80% of the initial luminous flux will be maintained after approx. 50.000 hours of usage (50.000 LM80)

CONTROL PROTOCOL AND PROGRAMMING

- USITT DMX512A
- DMX channels: 5 / 1
- Setting, addressing, testing and measurements via LEDs display
- RDM (Remote Device Management)

ELECTRICAL SPECIFICATIONS AND CONNECTIONS

- AC power: 85-264 V, auto-sensing, 50/60 Hz
- In and Out PowerCon connectors to feed up to 8 (at 230 V) or 4 (at 115 V) fixtures
- Max power consumption: 200 W
- Power consumption: 0.92 A at 230 V, 1.83 A at 115 V - cosφ 0,95
- DMX data in/out: 5 pin locking XLR

ACCESSORIES

- Color frame
- Magnetic / metal gobo holder
- Gobo holder for glass gobo or iris slot
- Iris
- Donut
- Half top hat / top hat
- 4-leaf barndoor
- Flight case
- Optics: Profile/Soft Profile, Zoom Profile, Lens tube (various angles available)

LEDko D

CRI 80 / 90

D CRI 80
F011F000A Black

D CRI 90
F011D000A Black



KEY FEATURES

- **LED profile spot**
- **Light source: Daylight COB LED**
- **Soft profiling thanks to Fresnel and PC optics (Coemar patent)**
- **Smooth 16 bit dimmer**
- **Guaranteed flicker-free operation (DMX controlled PWM frequency)**
- **The fan setting allows three options: low, auto, DMX regulated**
- **Instant gobos from standard printers**

SPECIFICATIONS

- Fixed white CCT: 5.600 K
- Four blade framing system, each shutter blade is adjustable for radial position and angle
- Electronic 16 bit dimming with 3 selectable curves (exponential, logarithmic, linear)
- Synchronized, random or pulse electronic strobe
- Flicker-free operation with LEDs frequency controlled via DMX from 600 to 19.000 Hz
- Fan setting with 3 different options (low, auto, DMX regulated)
- CE approved
- IP rating: 20

PHYSICAL SIZE

- Length: 362 mm (14.2 in)
- Length with Profile Zoom 28°/40° optic: 601 mm (23.6 in)
- Height: 189 mm (7.4 in)
- Height with bracket: 372 mm (14.6 in)
- Width: 212 mm (8.3 in)
- Weight: 6 kg (13.2 lbs)
- Weight with Profile Zoom 28°/40° optic: 8.5 Kg (18.7 lbs)

LIGHT SOURCE

- Daylight COB LED (CRI 80, TLCI 72 / CRI 90, TLCI 91)
- Average LED lifetime: a minimum of 80% of the initial luminous flux will be maintained after approx. 50.000 hours of usage (50.000 LM80)

CONTROL PROTOCOL AND PROGRAMMING

- USITT DMX512A
- DMX channels: 5 / 1
- Setting, addressing, testing and measurements via LEDs display
- RDM (Remote Device Management)

ELECTRICAL SPECIFICATIONS AND CONNECTIONS

- AC power: 85-264 V, auto-sensing, 50/60 Hz
- In and Out PowerCon connectors to feed up to 8 (at 230 V) or 4 (at 115 V) fixtures
- Max power consumption: 200 W
- Power consumption: 0.92 A at 230 V, 1.83 A at 115 V - cosφ 0,95
- DMX data in/out: 5 pin locking XLR

ACCESSORIES

- Color frame
- Magnetic / metal gobo holder
- Gobo holder for glass gobo or iris slot
- Iris
- Donut
- Half top hat / top hat
- 4-leaf barndoor
- Flight case
- Optics: Profile/Soft Profile, Zoom Profile, Lens tube (various angles available)

LEDko T Studio

F011A000A Black



KEY FEATURES

- LED profile spot
- CRI 96, ideal for broadcast segment
- Light source: Tungsten COB LED
- Soft profiling thanks to Fresnel and PC optics (Coemar patent)
- Smooth 16 bit dimmer
- Guaranteed flicker-free operation (DMX controlled PWM frequency)
- The fan setting allows three options: low, auto, DMX regulated
- Instant gobos from standard printers

SPECIFICATIONS

- CRI 96, ideal for broadcast segment
- Fixed white CCT: 3.200 K
- Four blade framing system, each shutter blade is adjustable for radial position and angle
- Electronic 16 bit dimming with 3 selectable curves (exponential, logarithmic, linear)
- Synchronized, random or pulse electronic strobe
- Flicker-free operation with LEDs frequency controlled via DMX from 600 to 19.000 Hz
- Fan setting with 3 different options (low, auto, DMX regulated)
- CE approved
- IP rating: 20

PHYSICAL SIZE

- Length: 362 mm (14.2 in)
- Length with Profile Zoom 28°/40° optic: 601 mm (23.6 in)
- Height: 189 mm (7.4 in)
- Height with bracket: 372 mm (14.6 in)
- Width: 212 mm (8.3 in)
- Weight: 6 kg (13.2 lbs)
- Weight with Profile Zoom 28°/40° optic: 8.5 Kg (18.7 lbs)

LIGHT SOURCE

- Tungsten COB LED (CRI 96, TlCI 97)
- Average LED lifetime: a minimum of 80% of the initial luminous flux will be maintained after approx. 50.000 hours of usage (50.000 LM80)

CONTROL PROTOCOL AND PROGRAMMING

- USITT DMX512A
- DMX channels: 5 / 1
- Setting, addressing, testing and measurements via LEDs display
- RDM (Remote Device Management)

ELECTRICAL SPECIFICATIONS AND CONNECTIONS

- AC power: 85-264 V, auto-sensing, 50/60 Hz
- In and Out PowerCon connectors to feed up to 8 (at 230 V) or 4 (at 115 V) fixtures
- Max power consumption: 200 W
- Power consumption: 0.92 A at 230 V, 1.83 A at 115 V - cosφ 0,95
- DMX data in/out: 5 pin locking XLR

ACCESSORIES

- Color frame
- Magnetic / metal gobo holder
- Gobo holder for glass gobo or iris slot
- Iris
- Donut
- Half top hat / top hat
- 4-leaf barndoor
- Flight case
- Optics: Profile/Soft Profile, Zoom Profile, Lens tube (various angles available)

LEDko D Studio

F011B000A Black



KEY FEATURES

- LED profile spot
- CRI 96, ideal for broadcast segment
- Light source: Daylight COB LED
- Soft profiling thanks to Fresnel and PC optics (Coemar patent)
- Smooth 16 bit dimmer
- Guaranteed flicker-free operation (DMX controlled PWM frequency)
- The fan setting allows three options: low, auto, DMX regulated
- Instant gobos from standard printers

SPECIFICATIONS

- CRI 96, ideal for broadcast segment
- Fixed white CCT: 5.600 K
- Four blade framing system, each shutter blade is adjustable for radial position and angle
- Electronic 16 bit dimming with 3 selectable curves (exponential, logarithmic, linear)
- Synchronized, random or pulse electronic strobe
- Flicker-free operation with LEDs frequency controlled via DMX from 600 to 19.000 Hz
- Fan setting with 3 different options (low, auto, DMX regulated)
- CE approved
- IP rating: 20

PHYSICAL SIZE

- Length: 362 mm (14.2 in)
- Length with Profile Zoom 28°/40° optic: 601 mm (23.6 in)
- Height: 189 mm (7.4 in)
- Height with bracket: 372 mm (14.6 in)
- Width: 212 mm (8.3 in)
- Weight: 6 kg (13.2 lbs)
- Weight with Profile Zoom 28°/40° optic: 8.5 Kg (18.7 lbs)

LIGHT SOURCE

- Daylight COB LED (CRI 96, TlCI 98)
- Average LED lifetime: a minimum of 80% of the initial luminous flux will be maintained after approx. 50.000 hours of usage (50.000 LM80)

CONTROL PROTOCOL AND PROGRAMMING

- USITT DMX512A
- DMX channels: 5 / 1
- Setting, addressing, testing and measurements via LEDs display
- RDM (Remote Device Management)

ELECTRICAL SPECIFICATIONS AND CONNECTIONS

- AC power: 85-264 V, auto-sensing, 50/60 Hz
- In and Out PowerCon connectors to feed up to 8 (at 230 V) or 4 (at 115 V) fixtures
- Max power consumption: 200 W
- Power consumption: 0.92 A at 230 V, 1.83 A at 115 V - cosφ 0,95
- DMX data in/out: 5 pin locking XLR

ACCESSORIES

- Color frame
- Magnetic / metal gobo holder
- Gobo holder for glass gobo or iris slot
- Iris
- Donut
- Half top hat / top hat
- 4-leaf barndoor
- Flight case
- Optics: Profile/Soft Profile, Zoom Profile, Lens tube (various angles available)

LEDko DIM T/D

T CRI 80
F035E000A Black

T CRI 90
F035C000A Black

D CRI 80
F035F000A Black

D CRI 90
F035D000A Black



KEY FEATURES

- **LED profile spot**
- **Light source: Tungsten or Daylight COB LED**
- **Powered directly through standard Power Dimming Units**
- **Soft profiling thanks to Fresnel and PC optics**
- **Smooth 16 bit dimmer**
- **Guaranteed flicker-free operation (DMX controlled PWM frequency)**
- **The fan setting allows three options: low, auto, DMX regulated**
- **Instant gobos from standard printers**

SPECIFICATIONS

- Fixed white CCT: 3.200 K or 5.600 K
- Four blade framing system, each shutter blade is adjustable for radial position and angle
- Electronic 16 bit dimming with 2 selectable curves, simulating halogen or discharge lamp based fixtures
- Synchronized, random or pulse electronic strobe
- Flicker-free operation with LEDs frequency controlled via DMX from 640 to 1.500 Hz
- Fan setting with 3 different options (low, auto or DMX regulated)
- CE approved
- IP rating: 20

PHYSICAL SIZE

- Length: 362 mm (14.2 in)
- Length with Profile Zoom 28°/40° optic: 601 mm (23.6 in)
- Height: 189 mm (7.4 in)
- Height with bracket: 372 mm (14.6 in)
- Width: 212 mm (8.3 in)
- Weight: 6 kg (13.2 lbs)
- Weight with Profile Zoom 28°/40° optic: 8.5 Kg (18.7 lbs)

LIGHT SOURCE

- Daylight or Tungsten COB LED
- T: CRI 80 (TLCI 65) or CRI 90 (TLCI 88)
- D: CRI 80 (TLCI 72) or CRI 90 (TLCI 91)
- Average LED lifetime: a minimum of 80% of the initial luminous flux will be maintained after approx. 50.000 hours of usage (50.000 LM80)

CONTROL PROTOCOL AND PROGRAMMING

- Dimming controlled via standard external power dimming unit or with potentiometer knob
- USITT DMX512A
- DMX channels: 5
- Setting, addressing, testing and measurements via LEDs display
- RDM (Remote Device Management)

ELECTRICAL SPECIFICATIONS AND CONNECTIONS

- AC power: 90-230 V, auto-sensing, 50/60 Hz
- In and Out PowerCon connectors to feed up to 8 (at 230 V) or 4 (at 115 V) fixtures
- Max power consumption: 200 W
- Power consumption: 0.86 A at 230 V, 1.76 A at 115 V - cosφ 0,99
- DMX data in/out: 5 pin locking XLR

ACCESSORIES

- Color frame
- Magnetic / metal gobo holder
- Gobo holder for glass gobo or iris slot
- Iris
- Donut
- Half top hat / top hat
- 4-leaf barndoor
- Flight case
- Optics: Profile/Soft Profile, Zoom Profile, Lens tube (various angles available)

LEDko Basic T/D

T CRI 80
F038E000A Black

T CRI 90
F038C000A Black

D CRI 80
F038F000A Black

D CRI 90
F038D000A Black



KEY FEATURES

- **LED profile spot**
- **On/Off, dimmable via on-board potentiometer**
- **Light source: Tungsten or Daylight COB LED**
- **Soft profiling thanks to Fresnel and PC optics**
- **Instantly create gobos from any standard printer**
- **Available and/or compatible with various standard optics and accessories**
- **Flicker-free operation**

SPECIFICATIONS

- Fixed white CCT: 3.200 K or 5.600 K
- Dimmable via on-board potentiometer (on/off)
- Four blade framing system, each shutter blade is adjustable for radial position and angle
- Flicker-free operation
- CE approved
- IP rating: 20

PHYSICAL SIZE

- Length: 362 mm (14.2 in)
- Length with Profile Zoom 28°/40° optic: 601 mm (23.6 in)
- Height: 189 mm (7.4 in)
- Height with bracket: 372 mm (14.6 in)
- Width: 212 mm (8.3 in)
- Weight: 5.8 kg (12.8 lbs)
- Weight with Profile Zoom 28°/40° optic: 8.3 Kg (18.3 lbs)

LIGHT SOURCE

- Tungsten or Daylight COB LED
- T: CRI 80 (TLCI 65) or CRI 90 (TLCI 88)
- D: CRI 80 (TLCI 72) or CRI 90 (TLCI 91)
- Average LED lifetime: a minimum of 80% of the initial luminous flux will be maintained after approx. 50.000 hours of usage (50.000 LM80)

CONTROL PROTOCOL AND PROGRAMMING

- On/Off, dimmable via on-board potentiometer

ELECTRICAL SPECIFICATIONS AND CONNECTIONS

- AC power: 90-305 V, auto-sensing, 50/60 Hz
- IEC In power connector
- Max power consumption: 140 W
- Power consumption: 0.6 A at 230 V, 1.27 A at 115 V - cosφ 0.96








ACCESSORIES

- Color frame
- Magnetic / metal gobo holder
- Gobo holder for glass gobo or iris slot
- Iris
- Donut
- Half top hat / top hat
- 4-leaf barndoor
- Flight case
- Optics: Profile/Soft Profile, Zoom Profile, Lens tube (various angles available)

Picture	Description
	Profile Zoom 15°-35°
	Profile Zoom 25°-50°
	Profile Zoom 28°-40°
	Soft Profile Fresnel Zoom 20°-40°
	Soft Profile PC Zoom 11°-38°

Picture	Description
	Front barrel for lens tube with burnished blades
	Profile 19°, lens tube
	Profile 26°, lens tube
	Profile 36°, lens tube
	Profile 50°, lens tube
	Profile 14°, lens tube
	Profile 70°, lens tube
	Profile 90°, lens tube

Picture	Description
	4 leaf barndoor
	Magnetic gobo holder
	Gobo holder for glass gobo
	Iris

Picture	Description
	Donut for Profile Zoom (190.5 mm) Donut for Soft Profile (185 mm) Donut for Lens Tube (159 mm)
	Half Top Hat for Profile Zoom (190.5 mm) Half Top Hat for Soft Profile (185 mm) Half Top Hat for Lens Tube (159 mm)
	Top Hat for Profile Zoom (190.5 mm) Half Top Hat for Soft Profile (185 mm) Half Top Hat for Lens Tube (159 mm)
	Color Frame Holder for Profile Zoom (190.5 mm) Color Frame Holder for Soft Profile (185 mm) Color Frame Holder for Lens Tube (159 mm)
	Hook Clamp 48 - 51 mm (Safe Working Load 20 Kg.)
	Light Clamp silver / black 48 - 51 mm (Safe Working Load 75 Kg.)
	Clamp silver / black flat 13 - 30 mm / ø 15 - 50 mm (Safe Working Load: 20 Kg.)

Ellipsoidal IP 65

LEDko EXT FullSpectrum

FullSpectrum RGBLA
F029T001A **Black**



KEY FEATURES

- LED profile spot IP 65
- RGBLA color mixing
- CCT proportional control from 2.700 to 6.500 K (CRI > 85)
- IP rating: 65 (weatherproof)
- Profile zoom from 17° to 38°
- Four blade framing system and internal gobo holder
- Electronic 16 bit dimming with 3 selectable curves (Exponential, Logarithmic and Linear)
- Fan setting with 2 different options (Auto, Silent)
- Guaranteed flicker-free

SPECIFICATIONS

- RGBLA color mixing with hue and saturation control
- CCT: all whites from 2.700 to 6.500 K
- IP rating: 65 (weatherproof)
- Profile zoom from 17° to 38°
- Four blade framing system, each shutter blade is adjustable for radial position and angle
- Internal gobo holder (standard gobo size B)
- Electronic 16 bit dimming with 3 selectable curves (exponential, logarithmic, linear)
- Synchronized, random or pulse electronic strobe
- Flicker-free operation with LEDs frequency controlled via DMX from 600 to 19.000 Hz
- Fan setting with 2 different options (auto, silent)
- CE approved

PHYSICAL SIZE

- Length: 687.8 mm (27.07 in)
- Width: 252.6 mm (9.94 in)
- Height: 248 mm (7.0 in)
- Height with bracket: 405 mm (15.94 in)
- Weight: 15.5 Kg (34.2 lbs)

LIGHT SOURCE

- RGBLA LEDs module (CRI > 85)
- Average LED lifetime: a minimum of 80% of the initial luminous flux will be maintained after approx. 50.000 hours of usage (50.000 LM80)

CONTROL PROTOCOL AND PROGRAMMING

- USITT DMX512A
- DMX channels: 16 / 7 / 1 / Studio mode / RGB mode
- Setting, addressing, testing and measurements via LEDs display
- RDM (Remote Device Management)

ELECTRICAL SPECIFICATIONS AND CONNECTIONS

- AC power: 80-264 V, auto-sensing, 50/60 Hz
- Internal cable without power plug
- Max power consumption: 250 W
- Power consumption: 1.16 A at 230 V, 2.34 A at 115 V - cosφ 0.93
- DMX data in/out: 5 pin locking XLR



The **LEDko EXT family** has been designed to meet the needs of architects and lighting designers, who were looking for **weatherproof lighting fixtures** suitable not only for temporary, but also for **permanent outdoor installations**.

LEDko EXT

FullSpectrum (gobo rotator)

FullSpectrum RGBLA
F028T001A **Black**



KEY FEATURES

- **LED profile spot IP 65**
- **RGBLA color mixing**
- **CCT proportional control from 2.700 to 6.500 K (CRI > 85)**
- **Dual gobo rotator included**
- **Profile zoom from 17° to 38°**
- **Electronic 16 bit dimming with 3 selectable curves (Exponential, Logarithmic and Linear)**
- **Fan setting with 2 different options (Auto, Silent)**
- **Guaranteed flicker-free**
- **Four blade framing system available as accessory**

SPECIFICATIONS

- RGBLA color mixing with hue and saturation control
- CCT: all whites from 2.700 to 6.500 K
- Dual gobo rotator included (standard gobo size B)
- IP rating: 65 (weatherproof)
- Profile zoom from 17° to 38°
- Electronic 16 bit dimming with 3 selectable curves (exponential, logarithmic, linear)
- Synchronized, random or pulse electronic strobe
- Flicker-free operation with LEDs frequency controlled via DMX from 600 to 19.000 Hz
- Fan setting with 2 different options (auto, silent)
- CE approved

PHYSICAL SIZE

- Length: 687.8 mm (27.07 in)
- Width: 252.6 mm (9.94 in)
- Height: 248 mm (7.0 in)
- Height with bracket: 405 mm (15.94 in)
- Weight: 15.5 Kg (34.2 lbs)

LIGHT SOURCE

- RGBLA LEDs module (CRI > 85)
- Average LED lifetime: a minimum of 80% of the initial luminous flux will be maintained after approx. 50.000 hours of usage (50.000 LM80)

CONTROL PROTOCOL AND PROGRAMMING

- USITT DMX512A
- DMX channels: 19 / 10 / 4 / Studio mode / RGB mode
- Setting, addressing, testing and measurements via LEDs display
- RDM (Remote Device Management)

ELECTRICAL SPECIFICATIONS AND CONNECTIONS

- AC power: 80-264 V, auto-sensing, 50/60 Hz
- Internal cable without power plug
- Max power consumption: 260 W
- Power consumption: 1.22 A at 230 V, 2.43 A at 115 V - cosφ 0.93
- DMX data in/out: 5 pin locking XLR

ACCESSORIES

- Four blade framing system, this accessory can be installed instead of the dual gobo rotator

LEDko EXT T

CRI 80 / 90

T CRI 80
F029E001A **Black**

T CRI 90
F029C001A **Black**



KEY FEATURES

- **LED profile spot IP 65**
- **Tungsten COB LED (CRI 80 - CRI 90)**
- **Profile zoom from 14° to 35°**
- **Four blade framing system and internal gobo holder**
- **Electronic 16 bit dimming with 3 selectable curves (Exponential, Logarithmic and Linear)**
- **Fan setting with 2 different options (Auto, Silent)**
- **Guaranteed flicker-free**

SPECIFICATIONS

- Fixed white CCT: 3.200 K
- IP rating: 65 (weatherproof)
- Profile zoom from 14° to 35°
- Four blade framing system, each shutter blade is adjustable for radial position and angle
- Internal gobo holder (standard gobo size B)
- Electronic 16 bit dimming with 3 selectable curves (exponential, logarithmic or linear)
- Synchronized, random or pulse electronic strobe
- Flicker-free operation with LEDs frequency controlled via DMX from 600 to 19.000 Hz
- Fan setting with 2 different options (auto, silent)
- CE approved

PHYSICAL SIZE

- Length: 687.8 mm (27.07 in)
- Width: 252.6 mm (9.94 in)
- Height: 248 mm (7.0 in)
- Height with bracket: 405 mm (15.94 in)
- Weight: 14.0 Kg (30.8 lbs)

LIGHT SOURCE

- Tungsten COB LED (CRI 80 - CRI 90)
- Average LED lifetime: a minimum of 80% of the initial luminous flux will be maintained after approx. 50.000 hours of usage (50.000 LM80)

CONTROL PROTOCOL AND PROGRAMMING

- USITT DMX512A
- DMX channel: 5 / 1
- Setting, addressing, testing and measurements via LEDs display
- RDM (Remote Device Management)

ELECTRICAL SPECIFICATIONS AND CONNECTIONS

- AC power: 85-264 V, auto-sensing, 50/60 Hz
- Internal cable without power plug
- Max power consumption: 200 W
- Power consumption: 0.92 A at 230 V, 1.83 A at 115 V - cosφ 0,95
- DMX data in/out: 5 pin locking XLR

LEDko EXT T

CRI 80 / 90 (gobo rotator)

T CRI 80 with gobo rotator
F028E001A **Black**

T CRI 90 with gobo rotator
F028C001A **Black**



KEY FEATURES

- LED profile spot IP 65
- Tungsten COB LED (CRI 80 - CRI 90)
- Dual gobo rotator included
- Profile zoom from 14° to 35°
- Electronic 16 bit dimming with 3 selectable curves (Exponential, Logarithmic and Linear)
- Fan setting with 2 different options (Auto, Silent)
- Guaranteed flicker-free
- Four blade framing system available as accessory

SPECIFICATIONS

- Fixed white CCT: 3.200 K
- Dual gobo rotator included (standard gobo size B)
- IP rating: 65 (weatherproof)
- Profile zoom from 14° to 35°
- Electronic 16 bit dimming with 3 selectable curves (exponential, logarithmic or linear)
- Synchronized, random or pulse electronic strobe
- Flicker-free operation with LEDs frequency controlled via DMX from 600 to 19.000 Hz
- Fan setting with 2 different options (auto, silent)
- CE approved

PHYSICAL SIZE

- Length: 687.8 mm (27.07 in)
- Width: 252.6 mm (9.94 in)
- Height: 248 mm (7.0 in)
- Height with bracket: 405 mm (15.94 in)
- Weight: 14.0 Kg (30.8 lbs)

LIGHT SOURCE

- Tungsten COB LED (CRI 80 - CRI 90)
- Average LED lifetime: a minimum of 80% of the initial luminous flux will be maintained after approx. 50.000 hours of usage (50.000 LM80)

CONTROL PROTOCOL AND PROGRAMMING

- USITT DMX512A
- DMX channel: 8 / 4
- Setting, addressing, testing and measurements via LEDs display
- RDM (Remote Device Management)

ELECTRICAL SPECIFICATIONS AND CONNECTIONS

- AC power: 85-264 V, auto-sensing, 50/60 Hz
- Internal cable without power plug
- Max power consumption: 210 W
- Power consumption: 0.96 A at 230 V, 1.92 A at 115 V - cosφ 0,95
- DMX data in/out: 5 pin locking XLR

ACCESSORIES

- Four blade framing system, this accessory can be installed instead of the dual gobo rotator

LEDko EXT D

CRI 80 or CRI 90

D CRI 80
F029F001A **Black**

D CRI 90
F029D001A **Black**



KEY FEATURES

- LED profile spot IP 65
- Daylight COB LED (CRI 80 - CRI 90)
- Profile zoom from 14° to 35°
- Four blade framing system and internal gobo holder
- Electronic 16 bit dimming with 3 selectable curves (Exponential, Logarithmic and Linear)
- Fan setting with 2 different options (Auto, Silent)
- Guaranteed flicker-free

SPECIFICATIONS

- Fixed white CCT: 5.600 K
- IP rating: 65 (weatherproof)
- Profile zoom from 14° to 35°
- Four blade framing system, each shutter blade is adjustable for radial position and angle
- Internal gobo holder (standard gobo size B)
- Electronic 16 bit dimming with 3 selectable curves (exponential, logarithmic or linear)
- Synchronized, random or pulse electronic strobe
- Flicker-free operation with LEDs frequency controlled via DMX from 600 to 19.000 Hz
- Fan setting with 2 different options (auto, silent)
- CE approved

PHYSICAL SIZE

- Length: 687.8 mm (27.07 in)
- Width: 252.6 mm (9.94 in)
- Height: 248 mm (7.0 in)
- Height with bracket: 405 mm (15.94 in)
- Weight: 14.0 Kg (30.8 lbs)

LIGHT SOURCE

- Daylight COB LED (CRI 80 - CRI 90)
- Average LED lifetime: a minimum of 80% of the initial luminous flux will be maintained after approx. 50.000 hours of usage (50.000 LM80)

CONTROL PROTOCOL AND PROGRAMMING

- USITT DMX512A
- DMX channel: 5 / 1
- Setting, addressing, testing and measurements via LEDs display
- RDM (Remote Device Management)

ELECTRICAL SPECIFICATIONS AND CONNECTIONS

- AC power: 85-264 V, auto-sensing, 50/60 Hz
- Internal cable without power plug
- Max power consumption: 200 W
- Power consumption: 0.92 A at 230 V, 1.83 A at 115 V - cosφ 0,95
- DMX data in/out: 5 pin locking XLR

LEDko EXT D

CRI 80 / 90 (gobo rotator)

D CRI 80 with gobo rotator
F028F001A **Black**

D CRI 90 with gobo rotator
F028D001A **Black**



KEY FEATURES

- LED profile spot IP 65
- Daylight COB LED (CRI 80 - CRI 90)
- Dual gobo rotator included
- Profile zoom from 14° to 35°
- Electronic 16 bit dimming with 3 selectable curves (Exponential, Logarithmic and Linear)
- Fan setting with 2 different options (Auto, Silent)
- Guaranteed flicker-free
- Four blade framing system available as accessory

SPECIFICATIONS

- Fixed white CCT: 5.600 K
- Dual gobo rotator included (standard gobo size B)
- IP rating: 65 (weatherproof)
- Profile zoom from 14° to 35°
- Electronic 16 bit dimming with 3 selectable curves (exponential, logarithmic or linear)
- Synchronized, random or pulse electronic strobe
- Flicker-free operation with LEDs frequency controlled via DMX from 600 to 19.000 Hz
- Fan setting with 2 different options (auto, silent)
- CE approved

PHYSICAL SIZE

- Length: 687.8 mm (27.07 in)
- Width: 252.6 mm (9.94 in)
- Height: 248 mm (7.0 in)
- Height with bracket: 405 mm (15.94 in)
- Weight: 14.0 Kg (30.8 lbs)

LIGHT SOURCE

- Daylight COB LED (CRI 80 - CRI 90)
- Average LED lifetime: a minimum of 80% of the initial luminous flux will be maintained after approx. 50.000 hours of usage (50.000 LM80)

CONTROL PROTOCOL AND PROGRAMMING

- USITT DMX512A
- DMX channel: 8 / 4
- Setting, addressing, testing and measurements via LEDs display
- RDM (Remote Device Management)

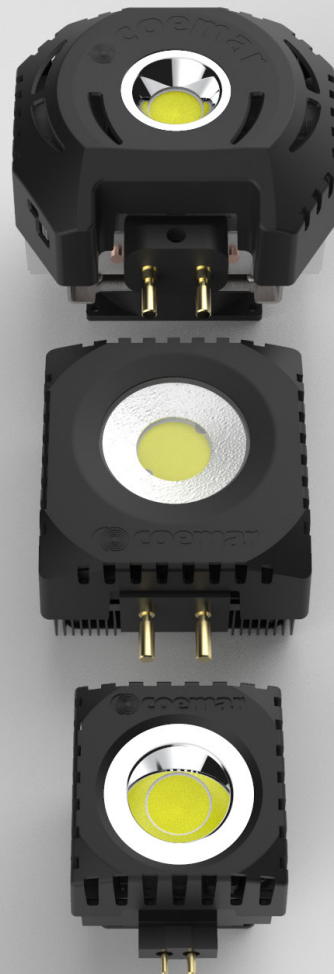
ELECTRICAL SPECIFICATIONS AND CONNECTIONS

- AC power: 85-264 V, auto-sensing, 50/60 Hz
- Internal cable without power plug
- Max power consumption: 210 W
- Power consumption: 0.96 A at 230 V, 1.92 A at 115 V – cosφ 0,95
- DMX data in/out: 5 pin locking XLR

ACCESSORIES

- Four blade framing system, this accessory can be installed instead of the dual gobo rotator

Retrofit Lamp



If you want to **switch your TV studio or theatre from halogen to LED**, the ReLite Series is the perfect solution for you.

Easy retrofitting, excellent white light quality, huge power savings with almost **no heat generated** and **long life LED lamps** are just some of the advantages offered by our ReLite Series.

ReLite Led HD

T/D

T G22 CRI avg. 97
F041A040A

D G22 CRI avg. 97
F041B040A



KEY FEATURES

- LED retrofit lamp
- Tungsten or Daylight COB LED (CRI avg. 97)
- Internal microprocessor and HD electronics
- Linear dimming from 1% to 100%: the stability of the fixture is guaranteed starting from 10/15 % of the dimmer channel (depending on the installation conditions)
- Customizable dimming curve through software (on request)
- Fan setting with 2 different options (Low and Auto)
- Thermal protection
- Guaranteed flicker-free

SPECIFICATIONS

- Fixed white CCT: 3.200 K or 5.600 K
- Internal microprocessor and HD electronics
- Linear dimming from 1% to 100%: the stability of the fixture is guaranteed starting from 10/15 % of the dimmer channel (depending on the installation conditions)
- Customizable dimming curve through software (on request)
- Flicker-free (dimming with constant current)
- Fan setting with 2 different options: low and auto (it can be changed manually via a switch on board)
- Maximum fan noise: 28 dbA
- IP rating: 20
- Thermal protection
- CE approved
- Instantly upgrade an existing Arri, ADB or DeSisti (and more)

PHYSICAL SIZE

- Depth: 99.8 mm (3.92 in)
- Width: 134.4 mm (5.29 in)
- Height: 123.2 mm (4.85 in)
- Height with connectors: 145 mm (5.70 in)
- Weight: 0.8 Kg (1.7 lbs)

LIGHT SOURCE

- Tungsten or Daylight COB LED (avg. CRI 97)
- Average LED lifetime: a minimum of 80% of the initial luminous flux will be maintained after approx. 50.000 hours of usage (50.000 LM80)

ELECTRICAL SPECIFICATIONS AND CONNECTIONS

- Power supply: 100-240 V, auto-sensing, 50/60 Hz
- Max power consumption: 160 W
- Power consumption: 0.8 A at 230 V, 1.7 A at 110 V - Cosφ > 0.9
- Two dip-switches mounted on board: one allows the reset of the fixture and the other the reduction of the fan speed
- Pin connectors: G22 - GX9.5 - GY16

ACCESSORIES

- G38 adaptor

ReLite Led

T/D

T G22 CRI 90
F032C040A

T G22 CRI 97
F032A040A

D G22 CRI 90
F032D040A

D G22 CRI 97
F032B040A



KEY FEATURES

- LED retrofit lamp
- Revitalize your 1K and 2K Fresnel fixtures thanks to ReLite: your true retrofit
- Excellent white light quality with CRI 90 or CRI 97
- Flicker-free ideal for TV/Broadcast installations
- Linear dimming from 1% to 100% from traditional TRIAC AC or IGBT dimmers
- No color-shift with dimming
- Huge power savings (reduce your power consumption by over 90%) with almost no heat generated

SPECIFICATIONS

- Fixed white CCT: 3.200 K or 5.600 K
- Linear dimming from 1% to 100%: the stability of the fixture is guaranteed starting from 30/35 % of the dimmer channel (depending on the installation conditions)
- Flicker-free operation (dimming with constant current)
- Audio noise: dbA 14
- IP rating: 20
- Thermal protection
- CE approved
- Instantly upgrade an existing Arri, ADB or DeSisti (and more)

PHYSICAL SIZE

- Depth: 91 mm (3.58 in)
- Width: 107 mm (4.21 in)
- Height: 110 mm (4.33 in)
- Height with connectors: 134 mm (5.28 in)
- Weight: 0.8 Kg (1.7 lbs)

LIGHT SOURCE

- Tungsten or Daylight COB LED (CRI 90 - CRI 97)
- Average LED lifetime: a minimum of 80% of the initial luminous flux will be maintained after approx. 50.000 hours of usage (50.000 LM80)

ELECTRICAL SPECIFICATIONS AND CONNECTIONS

- Power supply: 90-240 V, auto-sensing, 50/60 Hz
- Max power consumption: 160 W
- Power consumption: 0.7 A at 230 V, 1.48 A at 110 V - cosφ 0.98
- Pin Connectors: G22

ACCESSORIES

- G22 socket (2.000 W)
- G38 adaptor

Mini ReLite Led T/D

T CRI 90 D CRI 90
F040C070A F040D070A

T CRI 97 D CRI 97
F040A070A F040B070A



KEY FEATURES

- LED retrofit lamp
- Tungsten or Daylight COB LED
- Linear dimming from 1% to 100%: the stability of the fixture is guaranteed starting from 30/35 % of the dimmer channel (depending on the installation conditions)
- Full-range dimming on traditional dimmers
- Guaranteed flicker-free (dimming with constant current)
- Thermal protection

SPECIFICATIONS

- Fixed white CCT: 3,200 K or 5,600 K
- Linear dimming from 1% to 100%: the stability of the fixture is guaranteed starting from 30/35 % of the dimmer channel (depending on the installation conditions)
- Full-range dimming on your existing AC dimmers
- Flicker-free operation (dimming with constant current)
- IP rating: 20
- Thermal protection
- CE approved
- Instantly upgrade an existing Arri, ADB or DeSisti (and more)

PHYSICAL SIZE

- Depth: 73.7 mm (2.90 in)
- Width: 76.5 mm (3.01 in)
- Height: 77 mm (3.03 in)
- Height with connectors: 96 mm (3.78 in)
- Weight: 0.3 Kg (0.66 lbs)

LIGHT SOURCE

- Tungsten or Daylight COB LED (CRI 90 or 97)
- Average LED lifetime: a minimum of 80% of the initial luminous flux will be maintained after approx. 50.000 hours of usage (50.000 LM80)

ELECTRICAL SPECIFICATIONS AND CONNECTIONS

- Power supply: 90-240 V, auto-sensing, 50/60 Hz
- Max power consumption: 70 W
- Power consumption: 0.31 A at 230 V, 0,65 at 110 V - Cosφ 0.98
- Pin connectors: GX9.5, GY9.5, G22

ReLite Led Kit



The new ReLite Led Kit is the retrofit solution to **every old halogen fixture**, since the LED socket is adaptable to every projector. This retrofit LED lamp shows an **improved light output compared** to the standard ReLite versions thanks to the external box: this technology enables to keep all the electronics of the product outside the fixture, thus avoiding the overheating of the projector.

ReLite Led Kit T/D



KEY FEATURES

- LED retrofit lamp
- Tungsten or Daylight COB LED (CRI 90 - CRI > 95)
- Customizable LED socket to retrofit every halogen fixture
- Incredible light output
- Linear dimming from 1% to 100% via DMX
- 3 dimming curves selectable (Exponential, Logarithmic and Linear)
- Thermal protection
- Guaranteed flicker-free

SPECIFICATIONS

- Fixed white CCT: 3,200 K or 5,600 K
- Linear dimming from 1% to 100% via DMX
- Flicker-free operation with LEDs frequency controlled via DMX or display from 600 to 19,000 Hz (different curves selectable)
- Electronic 16 bit dimming with 3 selectable curves (exponential, logarithmic, linear)
- Thermal protection
- IP rating: 20
- CE approved
- Instantly upgrade an existing Arri, ADB or De Sisti (and more)

PHYSICAL SIZE (Kit 250)

- Length: 210 mm (8.26 in)
- Width: 124 mm (4.88 in)
- Height: 90 mm (3.54 in)
- Weight: 2.5 Kg (5.5 lbs.)

PHYSICAL SIZE (Kit 150)

- Length: 190 mm (7.48 in)
- Width: 110 mm (4.33 in)
- Height: 73 mm (2.87 in)
- Weight: 1.5 Kg (3.31 lbs)

LIGHT SOURCE

- Tungsten or Daylight COB LED (CRI 90 or CRI > 95)
- Average LED lifetime: a minimum of 80% of the initial luminous flux will be maintained after approx. 50,000 hours of usage (50,000 LM80)

CONTROL PROTOCOL AND PROGRAMMING

- USITT DMX512A
- DMX channels: 5 / 1
- Setting, addressing, testing and measurements via LEDs display
- RDM (Remote Device Management)

ELECTRICAL SPECIFICATIONS AND CONNECTIONS

- Power supply: 80-264 V, auto-sensing, 50/60 Hz
- In and Out PowerCon connectors
- Power consumption: depending on the LED module and the size/model of the fixture
- DMX data in/out: 5 pin locking XLR

ReLite Led Kit VariWhite



KEY FEATURES

- LED retrofit lamp
- Transform your halogen lamp into a VariWhite LED
- Customizable LED socket to retrofit every halogen fixture
- Incredible light output
- CCT proportional control from 2,700 to 6,500 K (CRI > 95 up to 97)
- Linear dimming from 1% to 100% via DMX
- 3 dimming curves selectable (Exponential, Logarithmic and Linear)
- Thermal protection
- Guaranteed flicker-free

SPECIFICATIONS

- CCT proportional control from 2,700 to 6,500 K
- Linear dimming from 1% to 100% via DMX
- No color shifts during dimming
- Flicker-free operation with LEDs frequency controlled via DMX or display from 600 to 19,000 Hz (different curves selectable)
- Electronic 16 bit dimming with 3 selectable curves (exponential, logarithmic, linear)
- Thermal protection
- IP rating: 20
- CE approved
- Instantly upgrade an existing Arri, ADB or De Sisti (and more)

PHYSICAL SIZE (Kit 250)

- Length: 210 mm (8.26 in)
- Width: 124 mm (4.88 in)
- Height: 90 mm (3.54 in)
- Weight: 2.5 Kg (5.5 lbs.)

PHYSICAL SIZE (Kit 150)

- Length: 190 mm (7.48 in)
- Width: 110 mm (4.33 in)
- Height: 73 mm (2.87 in)
- Weight: 1.5 Kg (3.31 lbs)

LIGHT SOURCE

- Variable white LEDs module (CRI ≥ 95 up to 97)
- Average LED lifetime: a minimum of 80% of the initial luminous flux will be maintained after approx. 50,000 hours of usage (50,000 LM80)

CONTROL PROTOCOL AND PROGRAMMING

- USITT DMX512A
- DMX channels: 6 / 2 / 1
- Setting, addressing, testing and measurements via LEDs display
- RDM (Remote Device Management)

ELECTRICAL SPECIFICATIONS AND CONNECTIONS

- Power supply: 80-264 V, auto-sensing, 50/60 Hz
- In and Out PowerCon connectors
- Power consumption: depending on the LED module and the size/model of the fixture
- DMX data in/out: 5 pin locking XLR

ReLite Led Kit DIM

T / D



KEY FEATURES

- **LED retrofit lamp**
- **Tungsten or Daylight COB LED (CRI 90 - CRI > 95)**
- **Linear dimming from 1% to 100% from traditional dimmers or by DMX**
- **2 dimming curves selectable, simulating halogen or discharge lamp based fixtures**
- **Thermal protection**
- **Guaranteed flicker-free**

SPECIFICATIONS

- Fixed white CCT: 3,200 K or 5,600 K
- Linear dimming from 1% to 100% from traditional TRIAC or IGBT dimmers (through a potentiometer on board) or by DMX
- 2 dimming curves selectable, simulating halogen or discharge lamp based fixtures
- Flicker-free operation with LED frequency controlled via DMX or display from 640 to 1,500 Hz (different curves selectable)
- Thermal protection
- IP rating: 20
- CE approved
- Instantly upgrade an existing Arri, ADB or De Sisti (and more)

PHYSICAL SIZE

- Length: 190 mm (7.5 in)
- Width: 170 mm (6.7 in)
- Height: 85 mm (3.3 in)
- Weight: 2.2 Kg (4.85 lbs)

LIGHT SOURCE

- Tungsten or Daylight COB LED (CRI 90 or CRI > 95)
- Average LED lifetime: a minimum of 80% of the initial luminous flux will be maintained after approx. 50,000 hours of usage (50,000 LM80)

CONTROL PROTOCOL AND PROGRAMMING

- Dimming controlled via standard external power dimming unit or with potentiometer knob
- USITT DMX512A
- DMX channels: 5
- Setting, addressing, testing and measurements via LEDs display
- RDM (Remote Device Management)

ELECTRICAL SPECIFICATIONS AND CONNECTIONS

- Power supply: 90-230 V, auto-sensing, 50/60 Hz
- In PowerCon connector
- Power consumption: depending on the LED module and the size/model of the fixture
- DMX data in/out: 5 pin locking XLR

Fresnel / PC



Developed to offer the best solution in the stage lighting field focusing on **theatre and TV studios applications**, Otello Led Fresnel incorporates all the traditional characteristics of a Fresnel light such as the distinctive soft-edged beam and the smooth and homogeneous light field.

The improved **HD electronics** with an advanced LED controller guarantees a smooth **20 bit dimming** and an improved color mixing. The **motorized zoom**, modernized design and **LCD screen** create the most advanced projector of the Coemar LED Fresnel range.

Otello 6 VariWhite



KEY FEATURES

- Fresnel lens
- Manual zoom (PO version available)
- Continuously variable CCT from 2.800 to 6.500 K (CRI avg. > 94)
- Electronic 16 bit dimming with 3 selectable curves (Exponential, Logarithmic, Linear)
- Fan setting with 4 different options (Low, Auto, Studio or DMX regulated)
- Guaranteed flicker-free

SPECIFICATIONS

- CCT proportional control from 2.800 to 6.500 K
- Fresnel lens (diameter: 150 mm / 5.9 in)
- Manual zoom range from 14° to 81°
- Electronic 16 bit dimming with 3 selectable curves (exponential, logarithmic, linear)
- Synchronized, random or pulse electronic strobe
- Flicker-free operation with LEDs frequency controlled via DMX from 600 to 19.000 Hz
- Fan setting with 4 different options (low, auto, studio or DMX regulated)
- IP rating: 20
- CE approved

PHYSICAL SIZE

- Length: 425.5 mm (16.76 in)
- Width: 277.7 mm (10.93 in)
- Height: 267.3 mm (10.52 in)
- Height with bracket: 384.2 mm (15.13 in)
- Weight: 9.5 Kg (20.94 lbs)

LIGHT SOURCE

- Variable white LEDs module (CRI 92 at 3.200 K - CRI 95 at 5.600 K)
- Average LED lifetime: a minimum of 80% of the initial luminous flux will be maintained after approx. 50.000 hours of usage (50.000 LM80)

CONTROL PROTOCOL AND PROGRAMMING

- USITT DMX512A
- DMX channels: 6 / 2 / 1
- Setting, addressing, testing and measurements via LEDs display
- RDM (Remote Device Management)

ELECTRICAL SPECIFICATIONS AND CONNECTIONS

- AC power: 80-264 V, auto-sensing, 50/60 Hz
- Max power consumption: 190 W
- Power consumption: 0.88 A at 230 V, 1.69 A at 115 V - cosφ 0.94
- In and Out PowerCon TRUE connectors
- DMX data in/out: 5 pin locking XLR

ACCESSORIES

- 8-leaf barndoor
- Color frame holder

AVAILABLE VERSIONS

- Pole operated zoom and yoke

Otello 6 T/D



KEY FEATURES

- Fresnel lens
- Manual zoom (PO version available)
- Light source: Tungsten or Daylight COB LED (CRI avg. > 95)
- Electronic 16 bit dimming with 3 selectable curves (Exponential, Logarithmic, Linear)
- Fan setting with 4 different options (Low, Auto, Studio or DMX regulated)
- Guaranteed flicker-free

SPECIFICATIONS

- Fixed white CCT: 3.200 K or 5.600 K
- Fresnel lens (diameter: 150 mm / 5.9 in)
- Manual zoom range from 10° to 86°
- Electronic 16 bit dimming with 3 selectable curves (exponential, logarithmic, linear)
- Synchronized, random or pulse electronic strobe
- Flicker-free operation with LEDs frequency controlled via DMX from 600 to 19.000 Hz
- Fan setting with 4 different options (low, auto, studio, DMX regulated)
- IP rating: 20
- CE approved

PHYSICAL SIZE

- Length: 425.5 mm (16.76 in)
- Width: 277.7 mm (10.93 in)
- Height: 267.3 mm (10.52 in)
- Height with bracket: 384.2 mm (15.13 in)
- Weight: 9.5 Kg (20.94 lbs)

LIGHT SOURCE

- Tungsten or Daylight COB LED (CRI Average > 95)
- Average LED lifetime: a minimum of 80% of the initial luminous flux will be maintained after approx. 50.000 hours of usage (50.000 LM80)

CONTROL PROTOCOL AND PROGRAMMING

- USITT DMX512A
- DMX channels: 5 / 1
- Setting, addressing, testing and measurements via LEDs display
- RDM (Remote Device Management)

ELECTRICAL SPECIFICATIONS AND CONNECTIONS

- AC power: 85-264 V, auto-sensing, 50/60 Hz
- Max power consumption: 210 W
- Power consumption: 0.96 A at 230 V, 1.92 A at 115 V - cosφ 0.95
- In and Out PowerCon TRUE connectors
- DMX data in/out: 5 pin locking XLR

ACCESSORIES

- 8-leaf barndoor
- Color frame holder

AVAILABLE VERSIONS

- Pole operated zoom and yoke

Otello 6 HD FullSpectrum



KEY FEATURES

- Fresnel lens
- HD electronics and LCD display
- Motorized zoom (PO version available)
- 20 bit RGBCLA color mixing
- Green-Magenta adjustment
- Continuously variable CCT from 2.700 to 6.500 K (CRI avg. > 95)
- Electronic 16 bit dimming with 4 selectable curves (Exponential, Logarithmic, Linear and Halo) digitally processed at 20 bit
- Fan setting with 4 different options (Low, Auto, Studio or DMX regulated)
- Dim-to-Warm function
- Guaranteed flicker-free

SPECIFICATIONS

- Red, Green, Blue, Cyan, Lime, Amber color mixing
- CCT: all whites from 2.700 to 6.500 K
- Fresnel lens (diameter: 200 mm / 7.87 in)
- HD electronics and LCD display
- Motorized zoom range from 10° to 83°
- Green-Magenta adjustment: continuously adjustable (Full Minusgreen to Full Plusgreen)
- Electronic 16 bit dimming with 4 selectable curves: exponential, logarithmic, linear or halo (curves digitally processed at 20 bit)
- Synchronized, random or pulse electronic strobe
- Dim-to-Warm function
- Guaranteed flicker-free operation (20.000 Hz LED refresh rate)
- Fan setting with 4 different options (low, auto, studio, DMX regulated)
- IP rating: 20
- CE approved

PHYSICAL SIZE

- Length: 425.5 mm (16.76 in)
- Width: 277.7 mm (10.93 in)
- Height: 267.3 mm (10.52 in)
- Height with bracket: 384.2 mm (15.13 in)
- Weight: 9.5 Kg (20.94 lbs)

LIGHT SOURCE

- RGBCLA LEDs module (CRI Average > 95)
- Average LED lifetime: a minimum of 80% of the initial luminous flux will be maintained after approx. 50.000 hours of usage (50.000 LM80)

CONTROL PROTOCOL AND PROGRAMMING

- USITT DMX512A
- DMX channels: 17 / 8 / 2 / Studio mode / RGB mode
- Setting, addressing, testing and measurements via LCD display
- RDM (Remote Device Management)

ELECTRICAL SPECIFICATIONS AND CONNECTIONS

- AC power: 90-264 V, auto-sensing, 50/60 Hz
- Max power consumption: 210 W
- Power consumption: 0.98 A at 230 V, 1,86 A at 115 V - cosφ 0.93
- In and Out PowerCon TRUE connectors
- DMX data in/out: 5 pin locking XLR

ACCESSORIES

- 8-leaf barndoor
- Color frame holder

AVAILABLE VERSIONS

- Pole operated zoom and yoke

Otello 6 HD VariWhite



KEY FEATURES

- Fresnel lens
- HD electronics and LCD display
- Motorized zoom (PO version available)
- Continuously variable CCT from 2.800 to 6.500 K (CRI avg. > 94)
- Electronic 16 bit dimming with 4 selectable curves (Exponential, Logarithmic, Linear and Halo) digitally processed at 20 bit
- Fan setting with 4 different options (Low, Auto, Studio or DMX regulated)
- Guaranteed flicker-free

SPECIFICATIONS

- CCT proportional control from 2.800 to 6.500 K
- Fresnel lens (diameter: 150 mm / 5.9 in)
- HD electronics and LCD display
- Motorized zoom range from 14° to 81°
- Electronic 16 bit dimming with 4 selectable curves (exponential, logarithmic, linear and halo) digitally processed at 20 bit
- Synchronized, random or pulse electronic strobe
- Guaranteed flicker-free operation (20.000 Hz LED refresh rate)
- Fan setting with 4 different options (low, auto, studio or DMX regulated)
- IP rating: 20
- CE approved

PHYSICAL SIZE

- Length: 425.5 mm (16.76 in)
- Width: 277.7 mm (10.93 in)
- Height: 267.3 mm (10.52 in)
- Height with bracket: 384.2 mm (15.13 in)
- Weight: 9.5 Kg (20.94 lbs)

LIGHT SOURCE

- Variable white LEDs module (CRI 92 at 3.200 K - CRI 95 at 5.600 K)
- Average LED lifetime: a minimum of 80% of the initial luminous flux will be maintained after approx. 50.000 hours of usage (50.000 LM80)

CONTROL PROTOCOL AND PROGRAMMING

- USITT DMX512A
- DMX channels: 7 / 3 / 2
- Setting, addressing, testing and measurements via LCD display
- RDM (Remote Device Management)

ELECTRICAL SPECIFICATIONS AND CONNECTIONS

- AC power: 80-264 V, auto-sensing, 50/60 Hz
- Max power consumption: 200 W
- Power consumption: 0.93 A at 230 V, 1,77 A at 115 V - cosφ 0.94
- In and Out PowerCon TRUE connectors
- DMX data in/out: 5 pin locking XLR

ACCESSORIES

- 8-leaf barndoor
- Color frame holder

AVAILABLE VERSIONS

- Pole operated zoom and yoke

Otello 8 VariWhite



KEY FEATURES

- Fresnel lens
- Manual zoom (PO version available)
- Continuously variable CCT from 2.800 to 6.500 K (CRI avg. > 94)
- Electronic 16 bit dimming with 3 selectable curves (Exponential, Logarithmic, Linear)
- Fan setting with 4 different options (Low, Auto, Studio or DMX regulated)
- Guaranteed flicker-free

SPECIFICATIONS

- CCT proportional control from 2.800 to 6.500 K
- Fresnel lens (diameter: 200 mm / 7.87 in)
- Manual zoom range from 14° to 81°
- Electronic 16 bit dimming with 3 selectable curves (exponential, logarithmic, linear)
- Synchronized, random or pulse electronic strobe
- Flicker-free operation with LEDs frequency controlled via DMX from 600 to 19.000 Hz
- Fan setting with 4 different options (low, auto, studio or DMX regulated)
- IP rating: 20
- CE approved

PHYSICAL SIZE

- Length: 409 mm (16.10 in)
- Width: 317 mm (12.48 in)
- Height: 315 mm (12.40 in)
- Weight: 13.5 Kg (29.76 lbs)

LIGHT SOURCE

- Variable white LEDs module (CRI 92 at 3.200 K - CRI 95 at 5.600 K)
- Average LED lifetime: a minimum of 80% of the initial luminous flux will be maintained after approx. 50.000 hours of usage (50.000 LM80)

CONTROL PROTOCOL AND PROGRAMMING

- USITT DMX512A
- DMX channels: 6 / 2 / 1
- Setting, addressing, testing and measurements via LEDs display
- RDM (Remote Device Management)

ELECTRICAL SPECIFICATIONS AND CONNECTIONS

- AC power: 80-264 V, auto-sensing, 50/60 Hz
- Max power consumption: 245 W
- Power consumption: 1.13 A at 230 V, 2.17 A at 115 V - cosφ 0.94
- In and Out PowerCon TRUE connectors
- DMX data in/out: 5 pin locking XLR

ACCESSORIES

- 8-leaf barndoor
- Color frame holder

AVAILABLE VERSIONS

- Pole operated zoom and yoke

Otello 8 T/D



KEY FEATURES

- Fresnel lens
- Manual zoom (PO version available)
- Light source: Tungsten or Daylight COB LED (CRI avg. > 95)
- Electronic 16 bit dimming with 3 selectable curves (Exponential, Logarithmic, Linear)
- Fan setting with 4 different options (Low, Auto, Studio or DMX regulated)
- Guaranteed flicker-free

SPECIFICATIONS

- Fixed white CCT: 3.200 K or 5.600 K
- Fresnel lens (diameter: 200 mm / 7.87 in)
- Manual zoom range from 16° to 80°
- Electronic 16 bit dimming with 3 selectable curves (exponential, logarithmic, linear)
- Synchronized, random or pulse electronic strobe
- Flicker-free operation with LEDs frequency controlled via DMX from 600 to 19.000 Hz
- Fan setting with 4 different options (low, auto, studio, DMX regulated)
- IP rating: 20
- CE approved

PHYSICAL SIZE

- Length: 489 mm (19.25 in)
- Width: 313 mm (12.32 in)
- Height: 314 mm (12.36 in)
- Weight: 13.5 Kg (29.76 lbs)

LIGHT SOURCE

- Tungsten or Daylight COB LED (CRI Average > 95)
- Average LED lifetime: a minimum of 80% of the initial luminous flux will be maintained after approx. 50.000 hours of usage (50.000 LM80)

CONTROL PROTOCOL AND PROGRAMMING

- USITT DMX512A
- DMX channels: 5 / 1
- Setting, addressing, testing and measurements via LEDs display
- RDM (Remote Device Management)

ELECTRICAL SPECIFICATIONS AND CONNECTIONS

- AC power: 85-264 V, auto-sensing, 50/60 Hz
- Max power consumption: 310 W
- Power consumption: 1.42 A at 230 V, 2.84 A at 115 V - cosφ 0.95
- In and Out PowerCon TRUE connectors
- DMX data in/out: 5 pin locking XLR

ACCESSORIES

- 8-leaf barndoor
- Color frame holder

AVAILABLE VERSIONS

- Pole operated zoom and yoke

Otello 8 HD FullSpectrum



KEY FEATURES

- Fresnel lens
- HD electronics and LCD display
- Motorized zoom (PO version available)
- 20 bit RGBCLA color mixing
- Green-Magenta adjustment
- Continuously variable CCT from 2.700 to 6.500 K (CRI avg. > 95)
- Electronic 16 bit dimming with 4 selectable curves (Exponential, Logarithmic, Linear and Halo) digitally processed at 20 bit
- Fan setting with 4 different options (Low, Auto, Studio or DMX regulated)
- Dim-to-Warm function
- Guaranteed flicker-free

SPECIFICATIONS

- Red, Green, Blue, Cyan, Lime, Amber color mixing
- CCT: all whites from 2.700 to 6.500 K
- Fresnel lens (diameter: 200 mm / 7.87 in)
- HD electronics and LCD display
- Motorized zoom range from 10° to 83°
- Green-Magenta adjustment: continuously adjustable (Full Minusgreen to Full Plusgreen)
- Electronic 16 bit dimming with 4 selectable curves: exponential, logarithmic, linear or halo (curves digitally processed at 20 bit)
- Synchronized, random or pulse electronic strobe
- Dim-to-Warm function
- Guaranteed flicker-free operation (20.000 Hz LED refresh rate)
- Fan setting with 4 different options (low, auto, studio, DMX regulated)
- IP rating: 20
- CE approved

PHYSICAL SIZE

- Length: 489 mm (19.25 in)
- Width: 313 mm (12.32 in)
- Height: 314 mm (12.36 in)
- Weight: 13.5 Kg (29.76 lbs)

LIGHT SOURCE

- RGBCLA LEDs module (CRI Average > 95)
- Average LED lifetime: a minimum of 80% of the initial luminous flux will be maintained after approx. 50.000 hours of usage (50.000 LM80)

Otello 8 HD VariWhite



KEY FEATURES

- Fresnel lens
- HD electronics and LCD display
- Motorized zoom (PO version available)
- Continuously variable CCT from 2.800 to 6.500 K (CRI avg. > 94)
- Electronic 16 bit dimming with 4 selectable curves (Exponential, Logarithmic, Linear and Halo) digitally processed at 20 bit
- Fan setting with 4 different options (Low, Auto, Studio or DMX regulated)
- Guaranteed flicker-free

SPECIFICATIONS

- CCT proportional control from 2.800 to 6.500 K
- Fresnel lens (diameter: 200 mm / 7.87 in)
- HD electronics and LCD display
- Motorized zoom range from 14° to 81°
- Electronic 16 bit dimming with 4 selectable curves (exponential, logarithmic, linear and halo) digitally processed at 20 bit
- Synchronized, random or pulse electronic strobe
- Guaranteed flicker-free operation (20.000 Hz LED refresh rate)
- Fan setting with 4 different options (low, auto, studio or DMX regulated)
- IP rating: 20
- CE approved

PHYSICAL SIZE

- Length: 409 mm (16.10 in)
- Width: 317 mm (12.48 in)
- Height: 315 mm (12.40 in)
- Weight: 13.5 Kg (29.76 lbs)

LIGHT SOURCE

- Variable white LEDs module (CRI 92 at 3.200 K - CRI 95 at 5.600 K)
- Average LED lifetime: a minimum of 80% of the initial luminous flux will be maintained after approx. 50.000 hours of usage (50.000 LM80)

CONTROL PROTOCOL AND PROGRAMMING

- USITT DMX512A
- DMX channels: 7 / 3 / 2
- Setting, addressing, testing and measurements via LCD display
- RDM (Remote Device Management)

ELECTRICAL SPECIFICATIONS AND CONNECTIONS

- AC power: 80-264 V, auto-sensing, 50/60 Hz
- Max power consumption: 255 W
- Power consumption: 1.18 A at 230 V, 2.26 A at 115 V - cosφ 0.94
- In and Out PowerCon TRUE connectors
- DMX data in/out: 5 pin locking XLR

ACCESSORIES

- 8-leaf barndoor
- Color frame holder

AVAILABLE VERSIONS

- Pole operated zoom and yoke

Risalto Led S T/D

Tungsten Fresnel
F034C000S Black

Tungsten PC
F034C000T Black

Daylight Fresnel
F034D000S Black

Daylight PC
F034D000T Black



KEY FEATURES

- Light source: 100 W Tungsten or Daylight COB LEDs
- CRI 90
- 16° - 77° proportional zoom (with Fresnel lens)
- 10° - 85° proportional zoom (with PC lens)
- Smooth 16 bit dimmer
- Guaranteed flicker-free operation (DMX controlled PWM frequency)
- The fan setting allows three options: low, auto and DMX regulated

SPECIFICATIONS

- Fixed white CCT: 3,200 K or 5,600 K
- Fresnel or PC lenses (diameter 120 mm / 4.7 in)
- Zoom range from 16° to 77° (with Fresnel lens)
- Zoom range from 10° to 85° (with PC lens)
- Electronic 16 bit dimming with 3 selectable curves (exponential, logarithmic and linear)
- Synchronized, random or pulse electronic strobe
- Flicker-free operation with LEDs frequency controlled via DMX from 600 to 19,000 Hz
- Fan setting with 3 different options (low, auto, DMX regulated)
- IP rating: 20
- CE approved

PHYSICAL SIZE

- Length: 308 mm (12.13 in)
- Width: 251 mm (9.88 in)
- Height: 185 mm (7.28 in)
- Height with bracket: 288 mm (11.34 in)
- Weight: 5.5 Kg (12.13 lbs)

LIGHT SOURCE

- Tungsten or Daylight COB LED (CRI 90)
- Average LED lifetime: a minimum of 80% of the initial luminous flux will be maintained after approx. 50,000 hours of usage (50,000 LM80)

CONTROL PROTOCOL AND PROGRAMMING

- USITT DMX512A
- DMX channels: 5 / 1
- Setting, addressing, testing and measurements via LEDs display
- RDM (Remote Device Management)

ELECTRICAL SPECIFICATIONS AND CONNECTIONS

- AC power: 90-264 V, auto-sensing, 50/60 Hz
- Max power consumption: 100 W
- Power consumption: 0.46 A at 230 V, 0.92 A at 115 V - $\cos\phi$ 0.95
- In and Out PowerCon connectors
- DMX data in/out: 5 pin locking XLR

ACCESSORIES

- 4-leaf barndoor

Risalto Led M T/D

Tungsten Fresnel
F034C000M Black

Tungsten PC
F034C000N Black

Daylight Fresnel
F034D000M Black

Daylight PC
F034D000N Black



KEY FEATURES

- Light source: 200 W Tungsten or Daylight COB LEDs
- CRI 90
- 11° - 82° proportional zoom (with Fresnel lens)
- 11° - 66° proportional zoom (with PC lens)
- Smooth 16 bit dimmer
- Guaranteed flicker-free operation (DMX controlled PWM frequency)
- The fan setting allows three options: low, auto and DMX regulated

SPECIFICATIONS

- Fixed white CCT: 3,200 K or 5,600 K
- Fresnel or PC lenses (diameter 150 mm / 5.9 in)
- Zoom range from 11° to 82° (with Fresnel lens)
- Zoom range from 11° to 66° (with PC lens)
- Electronic 16 bit dimming with 3 selectable curves (exponential, logarithmic and linear)
- Synchronized, random or pulse electronic strobe
- Flicker-free operation with LEDs frequency controlled via DMX from 600 to 19,000 Hz
- Fan setting with 3 different options (low, auto, DMX regulated)
- IP rating: 20
- CE approved

PHYSICAL SIZE

- Length: 413 mm (16.26 in)
- Width: 281 mm (11.06 in)
- Height: 218 mm (8.58 in)
- Height with bracket: 348 mm (13.70 in)
- Weight: 8.5 Kg (18.74 lbs)

LIGHT SOURCE

- Tungsten or Daylight COB LED (CRI 90)
- Average LED lifetime: a minimum of 80% of the initial luminous flux will be maintained after approx. 50,000 hours of usage (50,000 LM80)

CONTROL PROTOCOL AND PROGRAMMING

- USITT DMX512A
- DMX channels: 5 / 1
- Setting, addressing, testing and measurements via LEDs display
- RDM (Remote Device Management)

ELECTRICAL SPECIFICATIONS AND CONNECTIONS

- AC power: 85-264 V, auto-sensing, 50/60 Hz
- Max power consumption: 200 W
- Power consumption: 0.92 A at 230 V, 1.83 A at 115 V - $\cos\phi$ 0.95
- In and Out PowerCon connectors
- DMX data in/out: 5 pin locking XLR

ACCESSORIES

- 4-leaf barndoor

Moving Head



These fixtures have been developed after our customers' recurrent requests, who were looking for a more versatile solution in order to **reduce the burden of manually adjusting the setting** of the fixtures once mounted on the rigging infrastructure.

LEDko TM Profile FullSpectrum 6

F002Q030A Black



KEY FEATURES

- Color mixing through 6 colors including high-output lime to achieve true, usable broad-spectrum color with a depth and feel beyond any RGB fixture
- Green-Magenta adjustment
- 2700 - 6.500 K continuously variable CCT with color rendering index greater than 90
- Ultra quiet operation: ideal for low noise applications
- Special 24-blade motorized iris
- Motorized framing system, adjustable over 90°
- Guaranteed flicker-free operation (DMX controlled frequency)

SPECIFICATIONS

- Red, Green, Blue, White, Lime, Amber color mixing
- CCT: all whites from 2700 to 6.500 K
- Motorized zoom from 13° to 38°
- Four blade motorized framing system, each shutter blade is adjustable for radial position and angle, 90° rotation of the entire system
- Green-Magenta adjustment
- Motorized 24-blade Iris
- Electronic 16 bit dimming with 2 selectable curves, simulating halogen or discharge lamp based fixtures
- Synchronized, random or pulse electronic strobe
- Flicker-free operation with LEDs frequency controlled via DMX from 600 to 19.000 Hz
- Frost
- Fan setting with 3 different options (low, auto, DMX)
- Pan 540°, Tilt 270°, 16 bit
- Aluminium structure with die-cast plastic cover
- IP rating: 20
- CE approved

PHYSICAL SIZE

- Length: 459 mm (18 in)
- Width: 378 mm (14.9 in)
- Height (head straight up): 819 mm (32.2 in)
- Weight: 36.0 Kg (79.0 lbs)

LIGHT SOURCE

- RGBWLA LEDs module (CRI > 90)
- Average LED lifetime: a minimum of 80% of the initial luminous flux will be maintained after approx. 50.000 hours of usage (50.000 LM80)

CONTROL PROTOCOL AND PROGRAMMING

- USITT DMX512A
- DMX channels: 32
- Setting, addressing, testing and measurements via LCD display

ELECTRICAL SPECIFICATIONS AND CONNECTIONS

- AC power: 90-264 V, auto-sensing, 50/60 Hz
- In and Out PowerCon connectors with 2 m (6.6 ft) PowerCon cable without power plug
- Max power consumption: 400 W
- Power consumption: 1.93 A at 230 V, 3.86 A at 115 V - cosφ 0,9
- DMX data in/out: 5 pin locking XLR

LEDko TM Profile VariWhite

F002G030A Black



KEY FEATURES

- **2.700 K - 6.200 K** continuously variable CCT with color rendering index greater than 90
- **Ultra quiet operation:** ideal for low noise applications
- **Special 24-blade motorized iris**
- **Motorized framing system, adjustable over 90°**
- **Guaranteed flicker-free operation (DMX controlled frequency)**

SPECIFICATIONS

- CCT proportional control from 2.700 to 6.200 K
- Motorized zoom from 13° to 21°
- Four blade motorized framing system, each shutter blade is adjustable for radial position and angle, 90° rotation of the entire system
- Motorized 24-blade Iris
- Electronic 16 bit dimming with 2 selectable curves, simulating halogen or discharge lamp based fixtures
- Synchronized, random or pulse electronic strobe
- Flicker-free operation with LEDs frequency controlled via DMX from 600 to 19.000 Hz
- Frost
- Fan setting with 3 different options (low, auto, DMX)
- Pan 540°, Tilt 270°, 16 bit
- Aluminium structure with die-cast plastic cover
- IP rating: 20
- CE approved

PHYSICAL SIZE

- Length: 459 mm (18 in)
- Width: 378 mm (14.9 in)
- Height (head straight up): 819 mm (32.2 in)
- Weight: 36.0 Kg (79.0 lbs)

LIGHT SOURCE

- Variable white LEDs (CRI > 90)
- Average LED lifetime: a minimum of 80% of the initial luminous flux will be maintained after approx. 50.000 hours of usage (50.000 LM80)

CONTROL PROTOCOL AND PROGRAMMING

- USITT DMX512A
- DMX channels: 25
- Setting, addressing, testing and measurements via LCD display

ELECTRICAL SPECIFICATIONS AND CONNECTIONS

- AC power: 80-264 V, auto sensing, 50/60 Hz
- In and Out PowerCon connectors with 2 m (6.6 ft) PowerCon cable without power plug
- Max power consumption: 400 W
- Power consumption: 1.93 A at 230 V, 3.86 A at 115 V – cosφ 0,9
- DMX data in/out: 5 pin locking XLR

Phantom TM Tunable Tungsten

F002S030P Black



KEY FEATURES

- **CCT from 2.700 to 4.100 K**
- **CRI average: 96 (at 3.200 K)**
- **Motorized zoom from 13° to 65°**
- **Internal barndoor framing system (Patented):** framing system offering four independently variable axial blades with proportional rotation of the assembly through 90°
- **Green-Magenta Adjustment**
- **Ultra quiet operation:** ideal for low noise applications
- **Flicker-free operations with LEDs frequency controlled via DMX from 600 to 19.000 Hz**
- **Fan setting with 3 different options (low noise, auto silent, DMX)**

SPECIFICATIONS

- RGBW color mixing
- CCT: all whites from 2.700 to 4.100 K
- Green-Magenta adjustment
- Proportional Zoom from 13° to 65°
- Barndoor framing system (Patented): framing system offering four independently variable axial blades with proportional rotation of the assembly through 90°
- Electronic 16 bit dimming with 2 selectable curves, simulating halogen or discharge lamp based fixtures
- Flicker-free operation with LEDs frequency controlled via DMX from 600 to 19.000 Hz
- Fan setting with 3 different options (low noise, auto silent, DMX)
- IP rating: 20
- CE approved

PHYSICAL SIZE

- Length: 376.5 mm (14.8 in)
- Width: 551.3 mm (21.7 in)
- Height: 730.1 mm (28.7 in)
- Weight: 30 Kg (66.1 lbs)

LIGHT SOURCE

- RGBW LEDs module (CRI avg. 96 at 3.200 K, TLCI avg. > 94)
- Average LED lifetime: a minimum of 80% of the initial luminous flux will be maintained after approx. 50.000 hours of usage (50.000 LM80)

CONTROL PROTOCOL AND PROGRAMMING

- USITT DMX 512A
- DMX channels: 23
- Setting, addressing, testing and measurements via LCD display

ELECTRICAL SPECIFICATIONS AND CONNECTIONS

- AC power: 90-264 V, auto-sensing, 50/60 Hz
- In and Out PowerCon connectors with 2 m (6.6) PowerCon cable without power plug
- Max power consumption: 400 W
- Power consumption: 1.85 A at 230 V, 3.7 A at 115 V – cosφ 0.94
- DMX data in/out: 5 pin locking XLR

Phantom™ Tunable Daylight

F002R030P Black



KEY FEATURES

- **CCT from 5.000 to 6.500 K**
- **Motorized zoom**
- **Internal barndoor framing system (Patented):** framing system offering four independently variable axial blades with proportional rotation of the assembly through 90°
- **Green-Magenta Adjustment**
- **Ultra quiet operation:** ideal for low noise applications
- **Flicker-free operations with LEDs frequency controlled via DMX from 600 to 19.000 Hz**
- **Fan setting with 3 different options (low noise, auto silent, DMX)**

SPECIFICATIONS

- RGBW color mixing
- CCT: all whites from 5.000 to 6.500 K
- Green-Magenta adjustment
- Proportional Zoom
- Barndoor framing system (Patented): framing system offering four independently variable axial blades with proportional rotation of the assembly through 90°
- Electronic 16 bit dimming with 2 selectable curves, simulating halogen or discharge lamp based fixtures
- Flicker-free operation with LEDs frequency controlled via DMX from 600 to 19.000 Hz
- Fan setting with 3 different options (low noise, auto silent, DMX)
- IP rating: 20
- CE approved

PHYSICAL SIZE

- Length: 376.5 mm (14.8 in)
- Width: 551.3 mm (21.7 in)
- Height: 730.1 mm (28.7 in)
- Weight: 30 Kg (66.1 lbs)

LIGHT SOURCE

- RGBW LEDs module
- Average LED lifetime: a minimum of 80% of the initial luminous flux will be maintained after approx. 50.000 hours of usage (50.000 LM80)

CONTROL PROTOCOL AND PROGRAMMING

- USITT DMX 512A
- DMX channels: 23
- Setting, addressing, testing and measurements via LCD display

ELECTRICAL SPECIFICATIONS AND CONNECTIONS

- AC power: 90-264 V, auto-sensing, 50/60 Hz
- In and Out PowerCon connectors with 2 m (6.6) PowerCon cable without power plug
- Max power consumption: 400 W
- Power consumption: 1.85 A at 230 V, 3.7 A at 115 V – cosφ 0.94
- DMX data in/out: 5 pin locking XLR

Wash



Wash light family is composed by:

ParLite Led (LED version of a traditional PAR light)

PinLite Led (smaller version of the ParLite Led)

ParLite FC with full color chip LEDs, for an improved uniform color mixing

ParLite Led ACL with an ultra narrow 4 degree light beam

PinSpot accent light perfect to highlight details

Panorama Led with aluminium housing ideal for permanent outdoor installation

PinLite Led Tungsten

Tungsten
F010E000B **Black**

Tungsten IP65
F010E001B **Black**

Tungsten
F010E100B **Silver**

Tungsten IP65
F010E101B **Silver**



KEY FEATURES

- **LED PAR light**
- **12 Tungsten Cree LEDs**
- **IP rating: 20 or 65 (weatherproof)**
- **Double yoke for easy ground standing or easy truss hanging**
- **Variable beam angles due to quickly interchangeable optics (12°, 30°, 13° x 40°, 50°, 110°)**
- **Convection cooling system (no fans)**
- **Guaranteed flicker-free operation**

SPECIFICATIONS

- Fixed white CCT: 3.200 K
- Standard lens 12°
- Electronic dimmer
- Synchronized, random or pulse electronic strobe
- Flicker-free operation
- Double yoke for easy ground standing or truss hanging
- IP rating: 20 or 65 (weatherproof)
- CE approved

PHYSICAL SIZE

- Length: 168.9 mm (6.65 in)
- Width: 140.9 mm (5.55 in)
- Height: 128.5 mm (5.06 in)
- Height with bracket: 205 mm (8.07 in)
- Weight: 1.8 Kg (4 lbs)

LIGHT SOURCE

- 12 Tungsten Cree LEDs
- Average LED lifetime: a minimum of 80% of the initial luminous flux will be maintained after approx. 50.000 hours of usage (50.000 LM80)

CONTROL PROTOCOL AND PROGRAMMING

- USITT DMX512A
- DMX channels: 3 / 1
- Setting and addressing: binary dip switch or remotely
- 4 Internal automatic programs
- RDM (Remote Device Management)

ELECTRICAL SPECIFICATIONS AND CONNECTIONS

- AC power: 90-250 V, auto-sensing, 50/60 Hz, 2 m (6.6 ft) integral cable without power plug
- Max power consumption: 25 W
- Power consumption: 0.18 A at 230 V, 0.36 A at 115 V - cosφ 0.6
- DMX data in/out: 5 pin locking XLR

ACCESSORIES

- 30° lens kit
- 50° lens kit
- 13° x 40° elliptical lens kit
- 110° flood reflector
- Support color frame holder
- Frame for internal frost filter
- Frame for external frost filter
- IP 65 rear panel (black or silver)

PinLite Led RGB

RGB
F010I000B **Black**

RGB IP65
F010I001B **Black**

RGB
F010I100B **Silver**

RGB IP65
F010I101B **Silver**



KEY FEATURES

- **LED PAR light**
- **Electronic dimmer**
- **Electronic strobe**
- **Flicker-free operation**
- **Double yoke for easy ground standing or easy truss hanging**
- **Variable beam angles due to quickly interchangeable optics (12°, 30°, 13° x 40°, 50°, 110°)**
- **Convection cooling system (no fans)**

SPECIFICATIONS

- RGB color mixing
- Standard lens 12°
- Electronic dimmer
- Synchronized, random or pulse electronic strobe
- Flicker-free operation
- Double yoke for easy ground standing or truss hanging
- IP rating: 20 or 65 (weatherproof)
- CE approved

PHYSICAL SIZE

- Length: 168.9 mm (6.65 in)
- Width: 140.9 mm (5.55 in)
- Height: 128.5 mm (5.06 in)
- Height with bracket: 205 mm (8.07 in)
- Weight: 1.8 Kg (4 lbs)

LIGHT SOURCE

- 12 Cree LEDs (4 Red, 4 Green, 4 Blue)
- Average LED lifetime: a minimum of 80% of the initial luminous flux will be maintained after approx. 50.000 hours of usage (50.000 LM80)

CONTROL PROTOCOL AND PROGRAMMING

- USITT DMX512A
- DMX channels: 6 / 3
- Setting and addressing: binary dip switch or remotely
- 4 Internal automatic programs
- RDM (Remote Device Management)

ELECTRICAL SPECIFICATIONS AND CONNECTIONS

- AC power: 90-250 V, auto-sensing, 50/60 Hz, 2 m (6.6 ft) integral cable without power plug
- Max power consumption: 25 W
- Power consumption: 0.28 A at 230 V, 0.36 A at 115 V - cosφ 0.6
- DMX data in/out: 5 pin locking XLR

ACCESSORIES

- 30° lens kit
- 50° lens kit
- 13° x 40° elliptical lens kit
- 110° flood reflector
- Support color frame holder
- Frame for internal frost filter
- Frame for external frost filter
- IP 65 rear panel (black or silver)

ParLite Led Tungsten

Tungsten
F007E000B **Black**

Tungsten IP 65
F007E001B **Black**

Tungsten
F007E100B **Silver**

Tungsten IP 65
F007E101B **Silver**



KEY FEATURES

- **LED PAR light**
- **36 Tungsten Cree LEDs**
- **Manual or PO yoke available**
- **Electronic dimmer (2 curves selectable)**
- **Double yoke for easy ground standing or truss hanging**
- **Convection cooling system (no fan)**
- **Variable beam angles due to quickly interchangeable optics (12°, 30°, 13° x 40°, 50°, 110°)**
- **IP rating: 20 or 65**
- **Guaranteed flicker-free operation**

SPECIFICATIONS

- Fixed white CCT: 3.200 K
- Standard lens 12°
- Electronic dimmer (2 different curves selectable)
- Synchronized, random or pulse electronic strobe
- Flicker free operation
- Double yoke for easy ground standing or truss hanging
- IP rating: 20 or 65 (weatherproof)
- CE approved

PHYSICAL SIZE

- Length: 211.4 mm (8.32 in)
- Width: 182.8 mm (7.20 in)
- Height: 267 mm (10.51 in)
- Weight: 3.5 kg (7.7 lbs)

LIGHT SOURCE

- 36 Tungsten Cree LEDs
- Average LED lifetime: a minimum of 80% of the initial luminous flux will be maintained after approx. 50.000 hours of usage (50.000 LM80)

CONTROL PROTOCOL AND PROGRAMMING

- USITT DMX512A
- DMX channels: 6
- Setting and addressing: binary dip switch or remotely
- RDM (Remote Device Management)

ELECTRICAL SPECIFICATIONS AND CONNECTIONS

- AC power: 100-250 V, auto-sensing, 50/60 Hz, 2 m (6.6 ft) integral cable without power plug
- Max power consumption: 40 W
- Power consumption: 0.33 A at 230 V, 0.67 A at 115 V - cosφ 0.52
- DMX data in/out: 5 pin locking XLR

ACCESSORIES

- 30° lens kit
- 50° lens kit
- 13° x 40° elliptical lens kit
- 110° flood reflector
- Support color frame holder
- Frame for internal frost filter
- Frame for external frost filter
- 4 leaf barndoor
- IP 65 rear panel (black or silver)
- Egg crate louvers

ParLite Led VariWhite

VariWhite
F007G000B **Black**

VariWhite IP 65
F007G001B **Black**

VariWhite
F007G100B **Silver**

VariWhite IP 65
F007G101B **Silver**



KEY FEATURES

- **LED PAR light**
- **36 Cree LEDs**
- **Continuously variable CCT from 2.700 to 6.500 K**
- **Manual or PO yoke available**
- **Electronic dimmer (2 curves selectable)**
- **Double yoke for easy ground standing or truss hanging**
- **Convection cooling system (no fans)**
- **Variable beam angles due to quickly interchangeable optics (12°, 30°, 13° x 40°, 50°, 110°)**
- **IP rating: 20 or 65**
- **Guaranteed flicker-free operation**

SPECIFICATIONS

- CCT proportional control from 2.700 to 6.500 K
- Standard lens 12°
- Electronic dimmer (2 different curves selectable)
- Synchronized, random or pulse electronic strobe
- Flicker-free operation
- Double yoke for easy ground standing or tuss hanging
- IP rating: 20 or 65 (weatherproof)
- CE approved

PHYSICAL SIZE

- Length: 211.4 mm (8.32 in)
- Width: 182.8 mm (7.20 in)
- Height: 267 mm (10.51 in)
- Weight: 3.5 kg (7.7 lbs)

LIGHT SOURCE

- 36 Cree LEDs
- Average LED lifetime: a minimum of 80% of the initial luminous flux will be maintained after approx. 50.000 hours of usage (50.000 LM80)

CONTROL PROTOCOL AND PROGRAMMING

- USITT DMX512A
- DMX channels: 4
- Setting and addressing: binary dip switch or remotely
- RDM (Remote Device Management)

ELECTRICAL SPECIFICATIONS AND CONNECTIONS

- AC power: 100-250 V, auto-sensing, 50/60 Hz, 2 m (6.6 ft) integral cable without power plug
- Max power consumption: 50 W
- Power consumption: 0.4 A at 230 V, 0.8 A at 115 V - cosφ 0.52
- DMX data in/out: 5 pin locking XLR

ACCESSORIES

- 30° lens kit
- 50° lens kit
- 13° x 40° elliptical lens kit
- 110° flood reflector
- Support color frame holder
- Frame for internal frost filter
- Frame for external frost filter
- 4 leaf barndoor
- IP 65 rear panel (black or silver)
- Egg crate louvers

ParLite Led RGB

RGB
F007I000B **Black**

RGB IP 65
F007I001B **Black**

RGB
F007I100B **Silver**

RGB IP 65
F007I101B **Silver**



KEY FEATURES

- **LED PAR light**
- **36 RGB Cree LEDs (12 Red, 12 Green, 12 Blue)**
- **Manual or PO yoke available**
- **Electronic dimmer (2 curves selectable)**
- **Double yoke for easy ground standing or truss hanging**
- **Convection cooling system (no fans)**
- **Variable beam angles due to quickly interchangeable optics (12°, 30°, 13° x 40°, 50°, 110°)**
- **IP rating: 20 or 65**
- **Guaranteed flicker-free operation**

SPECIFICATIONS

- RGB color mixing
- Standard lens 12°
- Electronic dimmer (2 different curves selectable)
- Synchronized, random or pulse electronic strobe
- Flicker-free operation
- Double yoke for easy ground standing or truss hanging
- IP rating: 20 or 65 (weatherproof)
- CE approved

PHYSICAL SIZE

- Length: 211.4 mm (8.32 in)
- Width: 182.8 mm (7.20 in)
- Height: 267 mm (10.51 in)
- Weight: 3.5 kg (7.7 lbs)

LIGHT SOURCE

- 36 Cree LEDs (12 Red, 12 Green, 12 Blue)
- Average LED lifetime: a minimum of 80% of the initial luminous flux will be maintained after approx. 50.000 hours of usage (50.000 LM80)

CONTROL PROTOCOL AND PROGRAMMING

- USITT DMX512A
- DMX channels: 6
- Setting and addressing: binary dip switch or remotely
- 4 internal automatic programs
- RDM (Remote Device Management)

ELECTRICAL SPECIFICATIONS AND CONNECTIONS

- AC power: 90-250 V, auto-sensing, 50/60 Hz, 2 m (6.6 ft) integral cable without power plug
- Max power consumption: 50 W
- Power consumption: 0.4 A at 230 V, 0.8 A at 115 V - cosp 0.52
- DMX data in/out: 5 pin locking XLR

ACCESSORIES

- 30° lens kit
- 50° lens kit
- 13° x 40° elliptical lens kit
- 110° flood reflector
- Support color frame holder
- Frame for internal frost filter
- Frame for external frost filter
- 4 leaf barndoor
- IP 65 rear panel (black or silver)
- Egg crate louvers

ParLite Led RGBW

RGBW
F007L000C **Black**

RGBW IP 65
F007L001C **Black**

RGBW
F007L100C **Silver**

RGBW IP 65
F007L101C **Silver**



KEY FEATURES

- **LED PAR light**
- **36 RGBW Cree LEDs (9 Red, 9 Green, 9 Blue, 9 White)**
- **RGBW color mixing (2 DMX modes selectable) variable power on the 4 output channels**
- **Manual or PO yoke available**
- **Electronic dimmer (2 curves selectable)**
- **Double yoke for easy ground standing or truss hanging**
- **Convection cooling system (no fans)**
- **Variable beam angles due to quickly interchangeable optics (12°, 30°, 13° x 40°, 50°, 110°)**
- **IP rating: 20 or 65**
- **Guaranteed flicker-free operation**

SPECIFICATIONS

- RGBW color mixing (2 DMX modes selectable): variable power in the 4 output channels
- Standard lens 30°
- Electronic dimmer (2 curves selectable)
- Synchronized, random or pulse electronic strobe
- Guaranteed flicker-free operation with LEDs frequency controlled via DMX from 600 to 19.000 Hz
- Double yoke for easy ground standing or truss hanging
- IP rating: 20 or 65 (weatherproof)
- CE approved

PHYSICAL SIZE

- Length: 211.4 mm (8.32 in)
- Width: 182.8 mm (7.20 in)
- Height: 267 mm (10.51 in)
- Weight: 3.5 kg (7.7 lbs)

LIGHT SOURCE

- 36 Cree LEDs (9 Red, 9 Green, 9 Blue, 9 White)
- Average LED lifetime: a minimum of 80% of the initial luminous flux will be maintained after approx. 50.000 hours of usage (50.000 LM80)

CONTROL PROTOCOL AND PROGRAMMING

- USITT DMX512A
- DMX channels: 8 / 4
- Setting, addressing, testing and measurements via LEDs display
- 4 internal automatic programs
- Master / Slave mode
- RDM (Remote Device Management)

ELECTRICAL SPECIFICATIONS AND CONNECTIONS

- AC power: 100-250 V, auto-sensing, 50/60 Hz, 2 m (6.6 ft) integral cable without power plug
- Max power consumption: 50 W
- Power consumption: 0.4 A at 230 V, 0.8 A at 115 V - cosp 0.52
- DMX data in/out: 5 pin locking XLR

ACCESSORIES

- 30° lens kit
- 50° lens kit
- 13° x 40° elliptical lens kit
- 110° flood reflector
- Support color frame holder
- Frame for internal frost filter
- Frame for external frost filter
- 4 leaf barndoor
- IP 65 rear panel (black or silver)
- Egg crate louvers

ParLite Led RGBA

RGBA
F007M000C **Black**

RGBA IP 65
F007M001C **Black**

RGBA
F007M100C **Silver**

RGBA IP 65
F007M101C **Silver**



KEY FEATURES

- **LED PAR light**
- **36 RGBA Cree LEDs (9 Red, 9 Green, 9 Blue, 9 Amber)**
- **RGBA color mixing (2 DMX modes selectable) variable power on the 4 output channels**
- **Manual or PO yoke available**
- **Electronic dimmer (2 curves selectable)**
- **Double yoke for easy ground standing or truss hanging**
- **Convection cooling system (no fans)**
- **Variable beam angles due to quickly interchangeable optics (12°, 30°, 13° x 40°, 50°, 110°)**
- **IP rating: 20 or 65**
- **Guaranteed flicker-free operation**

SPECIFICATIONS

- RGBA color mixing (2 DMX modes selectable): variable power in the 4 output channels (RGBA)
- Standard lens 30°
- Electronic dimmer (2 curves selectable)
- Synchronized, random or pulse electronic strobe
- Guaranteed flicker-free operation with LEDs frequency controlled via DMX from 600 to 19.000 Hz
- Double yoke for easy ground standing or truss hanging
- IP rating: 20 or 65 (weatherproof)
- CE approved

PHYSICAL SIZE

- Length: 211.4 mm (8.32 in)
- Width: 182.8 mm (7.20 in)
- Height: 267 mm (10.51 in)
- Weight: 3.5 kg (7.7 lbs)

LIGHT SOURCE

- 36 Cree LEDs (9 Red, 9 Green, 9 Blue, 9 Amber)
- Average LED lifetime: a minimum of 80% of the initial luminous flux will be maintained after approx. 50.000 hours of usage (50.000 LM80)

CONTROL PROTOCOL AND PROGRAMMING

- USITT DMX512A
- DMX channels: 8 / 4
- Setting, addressing, testing and measurements via LEDs display
- 4 internal automatic programs
- Master / Slave mode
- RDM (Remote Device Management)

ELECTRICAL SPECIFICATIONS AND CONNECTIONS

- AC power: 100-250 V, auto-sensing, 50/60 Hz, 2 m (6.6 ft) integral cable without power plug
- Max power consumption: 50 W
- Power consumption: 0.4 A at 230 V, 0.8 A at 115 V - cosφ 0.52
- DMX data in/out: 5 pin locking XLR

ACCESSORIES

- 30° lens kit
- 50° lens kit
- 13° x 40° elliptical lens kit
- 110° flood reflector
- Support color frame holder
- Frame for internal frost filter
- Frame for external frost filter
- 4 leaf barndoor
- IP 65 rear panel (black or silver)
- Egg crate louvers

ParLite FC RGBW

15° lenses
F030N000H **Black**

15° lenses IP 65
F030N001H **Black**

35° lenses
F030N000L **Black**

35° lenses IP 65
F030N001L **Black**



KEY FEATURES

- **LED PAR light**
- **9 RGBW+W Cree LEDs**
- **Multi-chips LED technology excellent color mixing**
- **Pre-set CCT levels from 2.700 to 10.000 K (CRI > 90)**
- **Stand alone color mixing (user manual colors setting)**
- **Convection cooling system (no fan)**
- **Lightweight, easy installation and transport**
- **Control over DMX (wireless DMX ready) and RDM**
- **Thermal sensor system for double LEDs protection**
- **IP 65 rated PowerCon true in/out for easy connection**

SPECIFICATIONS

- Dynamic RGBW color mixing
- Pre-set CCT levels adjustable via DMX and control panel with Tint control
- Electronic 8 / 16 bit dimming
- Beam angle: 15°, 35°
- Wireless ready (optional)
- Customizable led chip (A or UV)
- Electronic dimmer (2 curves selectable)
- Synchronized, random or pulse electronic strobe
- Flicker-free operation ideal for broadcast lighting
- Double yoke for easy ground standing or truss hanging
- IP rating: 20 or 65 (weatherproof)
- Fixture software update: direct using USB
- CE approved

PHYSICAL SIZE

- Length: 260 mm (10.2 in)
- Width: 130 mm (5.1 in)
- Height: 290 mm (11.4 in)
- Weight: 4.4 Kg (9.7 lbs)

LIGHT SOURCE

- 9 RGBW + White color 3.000 K Cree LEDs
- Average LED lifetime: a minimum of 80% of the initial luminous flux will be maintained after approx. 50.000 hours of usage (50.000 LM80)

CONTROL PROTOCOL AND PROGRAMMING

- USITT DMX512A
- DMX channels: 10
- Setting, addressing, testing and measurements via LEDs display
- 4 internal automatic programs
- Master / Slave mode
- RDM (Remote Device Management)

ELECTRICAL SPECIFICATIONS AND CONNECTIONS

- AC Power: 90-264 V, auto-sensing, 50/60 Hz
- In and Out PowerCon connectors
- Max power consumption: 80 W
- Power consumption: 0.41 A at 230 V, 0.85 A at 110 V - cosφ 0,9
- DMX data in/out: 5 pin locking XLR with Neutrik IP 65

ParLite ACL T/D

ACL
F071E000R **Black**

ACL IP 65
F071E001R **Black**

ACL
F071E100R **Silver**

ACL IP 65
F071E101R **Silver**



KEY FEATURES

- LED PAR light
- 12 Tungsten or Daylight Cree LEDs
- Narrow 4° light beam
- Double yoke for easy ground standing or truss hanging
- Manual or PO yoke available
- Convection cooling system (no fan)
- IP rating: 20 or 65
- Guaranteed flicker-free operation

SPECIFICATIONS

- Fixed white CCT: 3.200 K or 5.600 K
- Narrow 4° light beam
- Double yoke for easy ground standing or truss hanging
- Guaranteed flicker-free operation with LEDs frequency controlled via DMX from 600 to 19.000 Hz
- Thick aluminum, long lasting light source in long lasting body
- IP rating: 20 or 65 (weatherproof)
- CE approved

PHYSICAL SIZE

- Length: 211.4 mm (8.32 in)
- Width: 182.8 mm (7.20 in)
- Height: 267 mm (10.51 in)
- Weight: 3.5 kg (7.7 lbs)

LIGHT SOURCE

- 12 Tungsten or Daylight Cree LEDs
- Average LED lifetime: a minimum of 80% of the initial luminous flux will be maintained after approx. 50.000 hours of usage (50.000 LM80)

CONTROL PROTOCOL AND PROGRAMMING

- USITT DMX512A
- DMX channels: 6 / 1
- Setting, addressing, testing and measurements via LEDs display
- RDM (Remote Device Management)

ELECTRICAL SPECIFICATIONS AND CONNECTIONS

- AC power: 90-264 V, auto-sensing, 50/60 Hz, 2 m (6.6 ft) integral cable without power plug
- Power consumption: 0.53 A at 230 V, 1.08 A at 115 V - cosφ 0.4
- DMX data in/out: 5 pin locking XLR

ACCESSORIES

- Support color frame holder
- Frame for internal frost filter
- Frame for external frost filter
- 4 leaf barndoor
- IP 65 rear panel (black or silver)

PinSpot T/D

Tungsten
F033E100A **Silver**

Daylight
F033F100A **Silver**



KEY FEATURES

- LED PAR light
- Light source: 3 W Tungsten or Daylight LED
- Concentrated beam angle: 4°
- Flicker-free operation
- No maintenance required
- Thick aluminium enclosure to guaranteed body resistance in the long term
- Lightweight and compact size

SPECIFICATIONS

- Fixed white CCT: 3.200 K or 5.600 K
- Flicker-free operation
- Beam angle: 4°
- Thick aluminium body
- Orientable yoke
- IP rating: 44
- CE approved

PHYSICAL SIZE

- Length: 102.5 mm (4.03 in)
- Width: 77 mm (3.03 in)
- Height: 48 mm (1.88 in)
- Height with bracket: 86.5 mm (3.40 in)
- Weight: 0.4 Kg (0.88 lbs)

LIGHT SOURCE

- Tungsten or Daylight Cree LED
- Average LED lifetime: a minimum of 80% of the initial luminous flux will be maintained after approx. 50.000 hours of usage (50.000 LM80)

CONTROL PROTOCOL AND PROGRAMMING

- Max 50 PinSpot for 1 RegoBox (10 per line)

ELECTRICAL SPECIFICATIONS AND CONNECTIONS

- DC power: 3 V
- T connection cable In/Out
- Max power consumption: 2 W
- Power consumption: 700 mA at 3 V

ACCESSORIES

- RegoBox 5CH DMX512
- Cable KIT start/end

Panorama Led RGB

F008E101B White



KEY FEATURES

- **LED PAR light**
- **Dynamic color mixing: always the maximum light intensity at any color**
- **Guaranteed Flicker-free (DMX controlled PWM frequency)**
- **No fan, no maintenance, no noise**
- **Design for high-end installations indoor and outdoor (IP 20 or IP 65)**
- **Thick aluminium enclosure to guaranteed body resistance in the long term**
- **Variable beam angles thank to quickly interchangeable optics (12°, 30°, 13° x 40°, 50°, 110°)**

SPECIFICATIONS

- RGB color mixing
- Standard lens 12°
- IP rating: 65 (weatherproof)
- Electronic dimmer
- Synchronized, random or pulse electronic strobe
- Flicker-free operation
- CE approved

PHYSICAL SIZE

- Length: 116.4 mm (4.58 in)
- Width: 278.2 mm (10.95 in)
- Height: 377 mm (14.84 in)
- Weight: 4.5 Kg (9.9 lbs)

LIGHT SOURCE

- 36 RGB LEDs (12 Red, 12 Green, 12 Blue)
- Average LED lifetime: a minimum of 80% of the initial luminous flux will be maintained after approx. 50.000 hours of usage (50.000 LM80)

CONTROL PROTOCOL AND PROGRAMMING

- USITT DMX512A
- DMX channels: 6
- Setting and addressing: binary dip switch or remotely
- 4 internal automatic programs
- RDM (Remote Device Management)

ELECTRICAL SPECIFICATIONS AND CONNECTIONS

- AC power: 90-250 V, auto-sensing, 50/60 Hz, 2 mt. (6.6 ft.) integral cable without power plug
- Max power consumption: 45 W
- Power consumption: 0.38 A at 230 V, 0.76 A at 115 V - cosφ 0.5
- DMX data in/out: 5 pin locking XLR

ACCESSORIES

- 30° lens kit
- 50° lens kit
- 110° flood reflector

Panorama Led Tungsten

F008E101B White



KEY FEATURES

- **LED PAR light**
- **Dynamic color mixing: always the maximum light intensity at any color**
- **Guaranteed Flicker-free (DMX controlled PWM frequency)**
- **No fan, no maintenance, no noise**
- **Design for high-end installations indoor and outdoor (IP 20 or IP 65)**
- **Thick aluminium enclosure to guaranteed body resistance in the long term**
- **Variable beam angles thank to quickly interchangeable optics (12°, 30°, 13° x 40°, 50°, 110°)**

SPECIFICATIONS

- Fixed white CCT: 3.200 K
- Standard lens 12°
- IP rating: 65 (weatherproof)
- Electronic dimmer (2 curves selectable)
- Synchronized, random or pulse electronic strobe
- Flicker-free operation
- CE approved

PHYSICAL SIZE

- Length: 116.4 mm (4.58 in)
- Width: 278.2 mm (10.95 in)
- Height: 377 mm (14.84 in)
- Weight: 4.5 Kg (9.9 lbs)

LIGHT SOURCE

- 36 Tungsten Cree LEDs
- Average LED lifetime: a minimum of 80% of the initial luminous flux will be maintained after approx. 50.000 hours of usage (50.000 LM80)

CONTROL PROTOCOL AND PROGRAMMING

- USITT DMX512A
- DMX channels: 6
- Setting and addressing: binary dip switch or remotely
- 4 internal automatic programs
- RDM (Remote Device Management)

ELECTRICAL SPECIFICATIONS AND CONNECTIONS

- AC power: 90-250 V, auto-sensing, 50/60 Hz, 2 mt. (6.6 ft.) integral cable without power plug
- Max power consumption: 45 W
- Power consumption: 0.38 A at 230 V, 0.76 A at 115 V - cosφ 0.5
- DMX data in/out: 5 pin locking XLR

ACCESSORIES

- 30° lens kit
- 50° lens kit
- 110° flood reflector

Soft / Cyc



SoftLite Led Tungsten

F026C000A Black



KEY FEATURES

- Diffuse LED light projector
- Reflection technology for a fully uniform illumination
- 48 Tungsten Cree LEDs
- Horizontal beam angle: 65° (1/2 peak angle) - 111° (1/10 peak angle)
- Electronic 16 bit dimming with 3 selectable curves (Exponential, Logarithmic and Linear)
- Double dissipation system: air forced heat pipe and fan
- Fan setting with 3 different options (low, auto, DMX regulated)
- Tempered frontal polycarbonate (UV)
- Aluminum extruded and steel body
- Guaranteed flicker-free

SPECIFICATIONS

- Fixed white CCT: 3.200 K
- Electronic 16 bit dimming with 3 selectable curves (exponential, logarithmic, linear)
- Beam angle: horizontal 65° (1/2 peak angle), 111° (1/10 peak angle)
- Electronic control of the cooling system
- Tempered frontal polycarbonate (UV)
- Guaranteed flicker-free operation with LEDs frequency controlled via DMX from 600 to 19.000 Hz
- Fan setting with 3 different options (low, auto, DMX regulated)
- Aluminium extruded and steel body
- Double dissipation system: air forced heat pipe and fan
- IP rating: 20
- CE approved

PHYSICAL SIZE

- Length: 691.2 mm (27.21 in)
- Width: 200 mm (7.9 in)
- Height: 210.5 mm (8.28 in)
- Height with bracket: 264.5 mm (10.41 in)
- Weight: 9.6 Kg (21.1 lbs)

LIGHT SOURCE

- 48 Tungsten Cree LEDs
- Average LED lifetime: a minimum of 80% of the initial luminous flux will be maintained after approx. 50.000 hours of usage (50.000 LM80)

CONTROL PROTOCOL AND PROGRAMMING

- USITT DMX512A
- DMX channels: 5 / 1
- Setting, addressing, testing and measurements via LEDs display
- RDM (Remote Device Management)

ELECTRICAL SPECIFICATIONS AND CONNECTIONS

- AC power: 90 - 264 V, auto-sensing, 50/60 Hz, 2 m (6.6 ft) PowerCon cable without power plug
- In and Out PowerCon connectors to feed up to 10 (at 230 V) or 5 (at 115 V)
- Max power consumption: 250 W
- Power consumption: 1.2 A at 230 V, 2.43 A at 115V - cosφ 0,9
- DMX data in/out: 5 pin locking XLR

ACCESSORIES

- 4 leaf barndoor
- 4 leaf barndoor + asymmetric diffuser
- Color frame holder
- Honeycomb 6 mm (o.24 in) 1/2 peak angle 7° - 1/10 peak angle 13°
- Honeycomb 10 mm (o.39 in) 1/2 peak angle 10° - 1/10 peak angle 16°
- Honeycomb XL
- Pole operated yoke
- 2 ground-standing feet
- Soft diffuser (different filter available)

SoftLite Led VariWhite

F026G000A Black



KEY FEATURES

- Diffuse led light projector
- Reflection technology for a fully uniform illumination
- CCT proportional control from 2.700 to 6.500 K (CRI > 95)
- Beam angle: horizontal 62° (1/2 peak angle) 110° (1/10 peak angle), vertical 54° (1/2 peak angle) 92° (1/10 peak angle)
- Electronic 16 bit dimming with 3 selectable curves (Exponential, Logarithmic and Linear)
- Double dissipation system: air forced heat pipe and fan
- Fan setting with 3 different options (low, auto, DMX regulated)
- Accessories available to control the light beam
- Guaranteed flicker-free

SPECIFICATIONS

- CCT proportional control from 2.700 K to 6.500 K
- Electronic 16 bit dimming with 3 selectable curves (exponential, logarithmic, linear)
- Beam angle: horizontal 62° (1/2 peak angle) 110° (1/10 peak angle), vertical 54° (1/2 peak angle) 92° (1/10 peak angle)
- Electronic control of the cooling system
- Tempered frontal polycarbonate (UV)
- Guaranteed flicker-free operation with LEDs frequency controlled via DMX from 600 to 19.000 Hz
- Fan setting with 3 different options (low, auto, DMX regulated)
- Aluminium extruded and steel body
- Double dissipation system: air forced heat pipe and fan
- IP rating: 20
- CE approved

PHYSICAL SIZE

- Length: 691.2 mm (27.21 in)
- Width: 200 mm (7.9 in)
- Height: 210.5 mm (8.28 in)
- Height with bracket: 264.5 mm (10.41 in)
- Weight: 9.6 Kg (21.1 lbs)

LIGHT SOURCE

- 96 Cree LEDs (CRI > 95 - TLCI ~ 98)
- Average LED lifetime: a minimum of 80% of the initial luminous flux will be maintained after approx. 50.000 hours of usage (50.000 LM80)

CONTROL PROTOCOL AND PROGRAMMING

- USITT DMX512A
- DMX channels: 6 / 2 / 1
- Setting, addressing, testing and measurements via LEDs display
- RDM (Remote Device Management)

ELECTRICAL SPECIFICATIONS AND CONNECTIONS

- AC power: 90-264 V, auto-sensing, 50/60 Hz, 2 m (6.6 ft) PowerCon cable without power plug
- In and Out PowerCon connectors to feed up to 10 (at 230 V) or 5 (at 115 V) fixtures
- Max power consumption: 250 W
- Power consumption: 1.1 A at 230 V, 2.22 A at 115 V - cosφ 0,98
- DMX data in/out: 5 pin locking XLR

ACCESSORIES

- 4 leaf barndoor
- 4 leaf barndoor + asymmetric diffuser
- Color frame holder
- Honeycomb 6 mm (ø.24 in) 1/2 peak angle 7° - 1/10 peak angle 13°
- Honeycomb 10 mm (ø.39 in) 1/2 peak angle 10° - 1/10 peak angle 16°
- Honeycomb XL
- Pole operated yoke
- 2 ground-standing feet
- Soft diffuser (different filter available)

SoftLite Led RGBW

F026L000A Black



KEY FEATURES

- Diffuse LED light projector
- Reflection technology for a fully uniform illumination
- RGB+W color mixing
- CCT proportional control from 2.700 to 10.000 K (CRI > 95)
- Green-Magenta Adjustment
- Beam angle: horizontal 62° (1/2 peak angle) 110° (1/10 peak angle), vertical 54° (1/2 peak angle) 92° (1/10 peak angle)
- Electronic 16 bit dimming with 3 selectable curves (Exponential, Logarithmic and Linear)
- Double dissipation system: air forced heat pipe and fan
- Fan setting with 3 different options (low, auto, DMX regulated)
- Accessories available to control the light beam
- Guaranteed flicker-free

SPECIFICATIONS

- RGB+W color mixing with hue and saturation control, with pure color mixing throughout the field
- CCT: all whites from 2.700 to 10.000 K
- Green-Magenta Adjustment
- Electronic 16 bit dimming with 3 selectable curves (exponential, logarithmic, linear)
- Beam angle: horizontal 62° (1/2 peak angle) 110° (1/10 peak angle), vertical 54° (1/2 peak angle) 92° (1/10 peak angle)
- Electronic control of the cooling system
- Tempered frontal polycarbonate (UV)
- Guaranteed flicker-free operation with LEDs frequency controlled via DMX from 600 to 19.000 Hz
- Fan setting with 3 different options (low, auto, DMX regulated)
- Aluminium extruded and steel body
- Double dissipation system: air forced heat pipe and fan
- IP rating: 20
- CE approved

PHYSICAL SIZE

- Length: 691.2 mm (27.21 in)
- Width: 200 mm (7.9 in)
- Height: 210.5 mm (8.28 in)
- Height with bracket: 264.5 mm (10.41 in)
- Weight: 9.6 Kg (21.1 lbs)

LIGHT SOURCE

- 96 Cree LEDs - 24 Red, 24 Green, 24 Blue, 24 White (CRI > 95)
- Average LED lifetime: a minimum of 80% of the initial luminous flux will be maintained after approx. 50.000 hours of usage (50.000 LM80)

CONTROL PROTOCOL AND PROGRAMMING

- USITT DMX512A
- DMX channels: 14 / 8 / 7 / 4 / 1
- Setting, addressing, testing and measurements via LEDs display
- RDM (Remote Device Management)

ELECTRICAL SPECIFICATIONS AND CONNECTIONS

- AC power: 90-264 V, auto-sensing, 50/60 Hz, 2 m (6.6 ft)
- PowerCon cable without power plug
- In and Out PowerCon connectors to feed up to 10 (at 230 V) or 5 (at 115 V) fixtures
- Max power consumption: 250 W
- Power consumption: 1.2 A at 230 V, 2.43 A at 115 V - cosφ 0,9
- DMX data in/out: 5 pin locking XLR

ACCESSORIES

- 4 leaf barndoor
- 4 leaf barndoor + asymmetric diffuser
- Color frame holder
- Honeycomb 6 mm (ø.24 in) 1/2 peak angle 7° - 1/10 peak angle 13°
- Honeycomb 10 mm (ø.39 in) 1/2 peak angle 10° - 1/10 peak angle 16°
- Honeycomb XL
- Pole operated yoke
- 2 ground-standing feet
- Soft diffuser (different filter available)

SoftLite Led IP 65 RGBW

F026L001A Black



KEY FEATURES

- IP 65 diffuse LED light projector
- Reflection technology for a fully uniform illumination
- RGB+W color mixing
- CCT proportional control from 2.700 to 10.000 K (CRI > 95)
- Green-Magenta Adjustment
- Beam angle: horizontal 62° (1/2 peak angle) 110° (1/10 peak angle), vertical 54° (1/2 peak angle) 92° (1/10 peak angle)
- Electronic 16 bit dimming with 3 selectable curves (Exponential, Logarithmic and Linear)
- Double dissipation system: air forced heat pipe and fan
- Fan setting with 3 different options (low, auto, DMX regulated)
- Accessories available to control the light beam
- Guaranteed flicker-free

SPECIFICATIONS

- IP rating: 65
- RGB+W color mixing with hue and saturation control, with pure color mixing throughout the field
- CCT: all whites from 2.700 to 10.000 K
- Green-Magenta Adjustment
- Electronic 16 bit dimming with 3 selectable curves (exponential, logarithmic, linear)
- Beam angle: horizontal 64° (1/2 peak angle) 112° (1/10 peak angle), vertical 56° (1/2 peak angle) 94° (1/10 peak angle)
- Electronic control of the cooling system
- Tempered frontal polycarbonate (UV)
- Guaranteed flicker-free operation with LEDs frequency controlled via DMX from 600 to 19.000 Hz
- Fan setting with 3 different options (low, auto, DMX regulated)
- Aluminium extruded and steel body
- Double dissipation system: air forced heat pipe and fan
- CE approved

PHYSICAL SIZE

- Length: 632 mm (24.9 in)
- Width: 271 mm (10.7 in)
- Height: 211 mm (8.3 in)
- Height with bracket: 245 mm (9.6 in)
- Weight: 14 Kg (30.7 lbs)

LIGHT SOURCE

- 96 Cree LEDs - 24 Red, 24 Green, 24 Blue, 24 White (CRI > 95)
- Average LED lifetime: a minimum of 80% of the initial luminous flux will be maintained after approx. 50.000 hours of usage (50.000 LM80)

CONTROL PROTOCOL AND PROGRAMMING

- USITT DMX512A
- DMX channels: 14 / 8 / 7 / 4 / 1
- RDM (Remote Device Management)

ELECTRICAL SPECIFICATIONS AND CONNECTIONS

- AC power: 90-264 V, auto-sensing, 50/60 Hz, 2 m (6.6 ft)
- PowerCon cable without power plug
- In and Out PowerCon connectors to feed up to 10 (at 230 V) or 5 (at 115 V) fixtures
- Max power consumption: 250 W
- Power consumption: 1.2 A at 230 V, 2.43 A at 115 V - cosφ 0,9
- DMX data in/out: 5 pin locking XLR

ACCESSORIES

- Pole operated yoke
- 2 ground-standing feet

StageLite Led FX RGBW

RGBW

F009L020F Black

RGBW IP 65

F009L021F Black



KEY FEATURES

- Pixel control 32 ch
- A truly unique fixture which can be focused asymmetrically on a Cyc, used as a foot wash, up lighting, and an effects unit from the same mounting position.
- The vertical beam zoom from 11° to 34° can be also focused from +56° to -52° (Patent Pending)
- Asymmetric and symmetric beam in one single fixture (Patent Pending)
- Swing effect
- 75 % to 82 % energy saving compared to traditional technology at the same brightness
- Robust aluminum, long lasting light source in long lasting body
- No fan, no maintenance, no noise
- Flicker-free operation

SPECIFICATIONS

- RGB+W color mixing
- The light beam is generated by three independent optical planes with 3 different kinds of customized (13° x 40° lenses mounted)
- 4 different control modes: global (compact), 2 zones (cell), 3 lines (lines), 6 ½ lines (frames)
- Intensity of each ½ line of LEDs can be individually controlled
- Orientable beam from +56° to -52°; linear adjustment with digital positioning control: concentrate, symmetrical or asymmetrical
- Proportional zoom from 11° to 34° (vertical beam, 1/2 peak angle)
- Electronic dimmer
- Synchronized, random or pulse electronic strobe
- Swing effects
- Guaranteed flicker-free operation with LEDs frequency controlled via DMX from 500 to 5.000 Hz
- Quick cam-lock clamps, on a modular guide with adjustable position
- IP rating: 20 or 65 (weatherproof)
- CE approved

PHYSICAL SIZE

- Length: 609.6 mm (24 in)
- Width: 210.6 mm (8.3 in)
- Height: 181.3 mm (7.1 in)
- Height with bracket: 341.1 mm (13.4 in)
- Weight: 12 kg (26.4 lbs)

LIGHT SOURCE

- 96 Cree LEDs (24 Red, 24 Green, 24 Blue and 24 White - 6.500 K)
- Average LED lifetime: a minimum of 80% of the initial luminous flux will be maintained after approx. 50.000 hours of usage (50.000 LM80)

CONTROL PROTOCOL AND PROGRAMMING

- USITT DMX512A
- DMX channels: 32 / 20 / 16 / 12
- Setting and addressing via LEDs display or remotely with Dr1+ Plus
- RDM (Remote Device Management)

ELECTRICAL SPECIFICATIONS AND CONNECTIONS

- AC power: 90-264 V, auto-sensing, 50/60 Hz, 2m (6.6 ft) integral cable without power plug, with PowerCon connector (only IP 20 version)
- Max power consumption: 210 W
- Power consumption: 1 A at 230 V, 2 A at 115 V - cosφ 0,9
- DMX data in/out: 5 pin locking XLR

ACCESSORIES

- 2 ground-standing feet

StageLite Led SC RGBW

RGBW
F021L020F Black

RGBW IP 65
F021L021F Black



KEY FEATURES

- The perfect wall washer: three independent optical planes with 3 different kinds of customized lenses
- The vertical beam zoom can be also focused from +56° to -52° (Patent Pending)
- 75% to 82% energy saving compared to traditional technology at the same brightness
- Robust aluminum, long lasting light source in long lasting body
- No fan, no maintenance, no noise
- Flicker-free operation

SPECIFICATIONS

- RGB+W color mixing
- The light beam is generated by three independent optical planes with 4 different kinds of customized lenses (13° x 40° lenses mounted)
- Orientable beam from + 56° to - 52°, linear adjustment with manual positioning control: concentrate, symmetrical or asymmetrical
- Proportional zoom from 11° to 34° (vertical beam, 1/2 peak angle)
- Electronic dimmer
- Synchronized, random or pulse electronic strobe
- Guaranteed flicker-free operation with LEDs frequency controlled via DMX from 500 to 5.000 Hz
- Quick cam-lock clamps, on a modular guide with adjustable position
- IP rating: 20 or 65 (weatherproof)
- CE approved

PHYSICAL SIZE

- Length: 304.1 mm (11.97 in)
- Width: 210.6 mm (10.83 in)
- Height: 181.3 mm (7.1 in)
- Height with bracket: 341.1 mm (13.4 in)
- Weight: 6 kg (13.2 lbs)

LIGHT SOURCE

- 48 Cree LEDs (12 Red, 12 Green, 12 Blue and 12 White - 6.500 K)
- Average LED lifetime: a minimum of 80% of the initial luminous flux will be maintained after approx. 50.000 hours of usage (50.000 LM80)

CONTROL PROTOCOL AND PROGRAMMING

- USITT DMX512A
- DMX channels: 8
- Setting and addressing via LEDs display or remotely with Dr1+ Plus
- RDM (Remote Device Management)

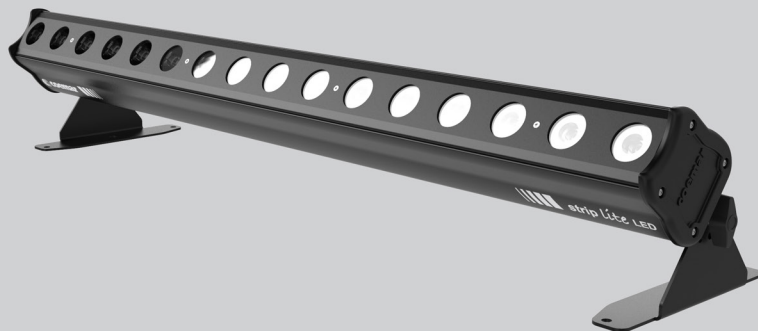
ELECTRICAL SPECIFICATIONS AND CONNECTIONS

- AC power: 90-264 V, auto-sensing, 50/60 Hz, 2m (6.6 ft) integral cable without power plug, with PowerCon connector (only IP 20 version)
- Max power consumption: 70 W
- Power consumption: 0.5 A at 230 V, 1 A at 115 V - $\cos\phi$ 0.6
- DMX data in/out: 5 pin locking XLR

ACCESSORIES

- 2 ground-standing feet

Linear



StripLite Led RGBW

0.5 mt. 1 mt.
F003N022L Black F003N024L Black



KEY FEATURES

- Ideal digital substitute of the analog strip light
- Cosmetic design for high-end installations
- Thick aluminium, long lasting light source in long lasting body
- Variable light projection angle to adapt the application
- No fan, no maintenance, no noise
- Internal/External gel fram for diffusion filters

SPECIFICATIONS

- RGB+W color mixing
- Standard lens 12°/35°
- Electronic dimmer
- Synchronized, random or pulse electronic strobe
- Guaranteed flicker-free operation with LEDs frequency controlled via DMX from 600 to 19.000 Hz
- 2 ground-standing feet
- IP rating: 20 or 65 (weatherproof)
- CE approved

PHYSICAL SIZE

- Length: 1010 mm (39.7 in)
- Width: 95 mm (3.7 in) - with ground-standing feet: 220 mm (8.7 in)
- Height: 152 mm (5.9 in) - with ground-standing feet: 207.4 mm (8.2 in)
- Weight: 7.7 Kg (17.0 lbs) - with ground-standing feet: 8.7 Kg (19.2 lbs)

LIGHT SOURCE

- 16 RGBW LEDs
- Average LED lifetime: a minimum of 80% of the initial luminous flux will be maintained after approx. 50.000 hours of usage (50.000 LM80)

CONTROL PROTOCOL AND PROGRAMMING

- USITT DMX512A
- DMX channels: 14 / 8 / 7 / 4 / 1
- Setting, addressing, testing and measurements via LEDs display
- RDM (Remote Device Management)

ELECTRICAL SPECIFICATIONS AND CONNECTIONS

- AC power: 90-264 V, auto-sensing, 50/60 Hz, 2m (6.6 ft) integral cable without power plug
- In and Out PowerCon connectors
- Max power consumption: 90 W
- Power consumption: 0.43 A at 230 V, 0.87 A at 115 V – $\cos\phi$ 0.9
- DMX data in/out: 5 pin locking XLR

ACCESSORIES

- 30° lens kit
- 50° lens kit
- Quick cam-lock clamps, on a modular guide with adjustable position

RazorLite Led RGBW

IP 20 IP 65
F027L024F Black F027L025F Black



KEY FEATURES

- RGBW color mixing
- Standard lens 13° x 40°
- Thick aluminium, long lasting light source in long lasting body
- Flicker-free
- No fan, no maintenance, no noise

SPECIFICATIONS

- RGB+W color mixing
- Standard lens 13° x 40°
- Electronic dimmer
- Synchronized, random or pulse electronic strobe
- Flicker-free operation
- 2 ground-standing feet
- IP rating: 20 or 65 (weatherproof)
- CE approved

PHYSICAL SIZE

- Length: 1.009 mm (39.7 in)
- Width: 95 mm (3.7 in) - with ground-standing feet: 220 mm (8.7 in)
- Height: 117 mm (4.6 in) - with ground-standing feet: 207 mm (8.1 in)
- Weight: 6.3 Kg (13.9 lbs) - with ground-standing feet: 7.3 Kg (16.1 lbs)

LIGHT SOURCE

- 40 Cree LEDs (10 Red, 10 Green, 10 Blue, 10 White)
- Average LED lifetime: a minimum of 80% of the initial luminous flux will be maintained after approx. 50.000 hours of usage (50.000 LM80)

CONTROL PROTOCOL AND PROGRAMMING

- USITT DMX512A
- DMX channels: 12 / 8 / 4 / 1
- Setting, addressing, testing and measurements via LEDs display
- RDM (Remote Device Management)

ELECTRICAL SPECIFICATIONS AND CONNECTIONS

- AC power: 90-264 V, auto-sensing, 50/60 Hz, 2 m (6.6 ft) integral cable without power plug
- In and Out PowerCon connectors
- Max power consumption: 85 W
- Power consumption: 0.4 A at 230 V, 0.82 A at 115 V – $\cos\phi$ 0.9
- DMX data in/out: 5 pin locking XLR

ACCESSORIES

- 12° lens kit
- 30° lens kit
- 50° lens kit
- Quick cam-lock clamps, on a modular guide with adjustable position

RigaLed Power RGBW

RigaLed Power 20 RGBW
F004L102F **Black**

RigaLed Power 40 RGBW
F004L104F **Black**



KEY FEATURES

- **RGBW color mixing**
- **Standard lens 13° x 40°**
- **Thick aluminium, long lasting light source in long lasting body**
- **Flicker-free**
- **No fan, no maintenance, no noise**

SPECIFICATIONS

- RGBW color mixing
- Standard elliptical lens 13°x 40°
- Silver die-cast aluminium body
- Orientable yokes (180°)
- IP rating: 20

PHYSICAL SIZE

- Length RigaLed Power 20: 500 mm (19.7 in)
- Length RigaLed Power 40: 995 mm (39.2 in)
- Width: 40 mm (1.6 in)
- Height: 73 mm (2.9 in)
- Weight RigaLed Power 20: 0.9 Kg (1.9 lbs)
- Weight RigaLed Power 40: 1.7 Kg (3.7 lbs)

LIGHT SOURCE

- RigaLed Power 20: 20 Cree LEDs (5 Red, 5 Green, 5 Blue, 5 White)
- RigaLed Power 40: 40 Cree LEDs (10 Red, 10 Green, 10 Blue, 10 White)
- Average LED lifetime: a minimum of 80% of the initial luminous flux will be maintained after approx. 50.000 hours of usage (50.000 LM80)

CONTROL PROTOCOL AND PROGRAMMING

- With RegoBox or Concept Design
- RDM (Remote Device Management)

ELECTRICAL SPECIFICATIONS CONNECTIONS

- DC constant current power supply: 350 mA
- Power consumption RigaLed Power 20: 21.6 W
- Power consumption RigaLed Power 40: 43.2 W
- RJ45 connector

ACCESSORIES

- 12° lens kit
- 30° lens kit
- 50° lens kit

Effect



Pixel RGBW

Pixel RGBW
PC10031A000 **Black**



KEY FEATURES

- **RGBW color mixing**
- **Weatherproof rating IP 65**
- **Fast magnetic and mechanical connection system achieve any kind of composition with the pixel**
- **Automatic addressing**
- **No maintenance required**

SPECIFICATIONS

- RGBW color mixing
- IP rating: 65 (weatherproof)
- Beam angle: 35°
- 3 different kind of yokes available for mechanical fixing and any orientation
- Flicker-free operation
- CE approved

PHYSICAL SIZE

- Length: 89 mm (3.50 in)
- Width: 78 mm (3.07 in)
- Height: 79 mm (3.11 in)
- Weight: 1 Kg (2.20 lbs)

LIGHT SOURCE

- 4 RGBW LEDs, 3W each
- Average LED lifetime: a minimum of 80% of the initial luminous flux will be maintained after approx. 50.000 hours of usage (50.000 LM80)

CONTROL PROTOCOL AND PROGRAMMING

- Through RegoPixel (max 32 Pixel for 1 RegoPixel)
- DMX channels: 4
- RDM (Remote Device Management)

ELECTRICAL SPECIFICATIONS AND CONNECTIONS

- DC power: 48 V (true RegoPixel, max 32 Pixel for 1 RegoPixel)
- Internal cable (T connection In/Out)
- Max power consumption: 10 W
- Power consumption: 0.25 A at 48 V – $\cos\phi$ 0,9

ACCESSORIES

- Short yoke
- Long yoke
- Spherical joint

ParLite Led Strobe

ParLite Led Strobe
PC10016A196 **Black**

ParLite Led Strobe IP65
PC10016A006 **Black**



KEY FEATURES

- **Thick aluminium, long lasting light source in long lasting body**
- **7 Led rings individually controlled**
- **Strobe and Wash modes (automatic LED intensity adjustment)**
- **Beam angle of 120°**
- **Low noise applications, silent fan**
- **Guaranteed Flicker-free operation (DMX controlled PWM frequency)**
- **Cosmetic design for hi-end installation, only 4.5 Kg (9.9 lbs)**
- **Internal/External gel frame (standard size)**
- **100-250 V, 50/60 Hz, auto sensing**
- **Smart build “Quick Stand” tucked into yoke**

SPECIFICATIONS

- Fixed white CCT: 6.500 K
- 120° beam angle
- 7 LED rings individually controlled
- ‘Ring’ strobe effects
- Strobe and wash modes (automatic led intensity adjustment)
- Synchronized, random or pulse electronic strobe
- Electronic dimmer (2 curves selectable)
- Guaranteed flicker-free operation with LEDs frequency controlled via DMX from 600 to 5.000 Hz
- Double yoke for easy ground standing or truss hanging
- IP rating: 20 or 65 (weatherproof)
- CE approved

PHYSICAL SIZE

- Length: 211 mm (8.3 in)
- Width: 182 mm (7.1 in)
- Height: 267 mm (10.5 in)
- Weight: 4.5 Kg (9.9 lbs)

LIGHT SOURCE

- 308 Daylight LEDs (White 6.500 K)
- Average LED lifetime: a minimum of 80% of the initial luminous flux will be maintained after approx. 50.000 hours of usage (50.000 LM80)

CONTROL PROTOCOL AND PROGRAMMING

- USITT DMX512A
- DMX channels: 13 / 6 / 3
- Setting, addressing, testing and measurements via LEDs display
- RDM (Remote Device Management)

ELECTRICAL SPECIFICATIONS AND CONNECTIONS

- AC power: 90-250 V, auto-sensing, 50/60 Hz, 2m (6.6 ft) integral cable without power plug
- Max power consumption: 97 W
- Power consumption: 0.7 A at 230 V, 1.5 A at 115 V – $\cos\phi$ 0.6
- DMX data in/out: 5 pin locking XLR

ACCESSORIES

- Support color frame holder
- Frame for internal frost filter
- Frame for external frost filter
- 4-leaf barndoor

Classical Theatrical



Rialto 300/500 W

Rialto 300/500 PC
PCO4098 **Black**

Rialto 300/500 Fresnel
PCO4099 **Black**



KEY FEATURES

- **Light source: halogen lamp 300/500 W**
- **PC or Fresnel lens**
- **8° - 40° proportional zoom (with Fresnel lens)**
- **7° - 48° proportional zoom (with PC lens)**

SPECIFICATIONS

- PC or Fresnel lens
- Zoom range from 8° to 40° (with Fresnel lens)
- Zoom range from 7° to 48° (with PC lens)
- Color frame holder
- IP rating: 20
- CE approved

PHYSICAL SIZE

- Length: 350 mm (13.78 in)
- Width: 253 mm (9.96 in)
- Height: 206 mm (8.11 in)
- Height with bracket: 307 mm (12.06 in)
- Weight: PC: 5.5 Kg (12.12 lbs) | Fresnel: 5 Kg (11.02 lbs)

LAMP

- Halogen lamp (300 or 500 W)

ELECTRICAL SPECIFICATIONS AND CONNECTIONS

- AC power: 230-240 V
- Max power consumption: 300 or 500 W
- Socket: GY9.5

ACCESSORIES

- 4-leaf barndoor
- Lamp 300 W, 230 V
- Lamp 500 W, 230 V

Risalto 650/1.000 W

Risalto 650/1.000 PC
PCO4100 *Black*

Risalto 650/1.000 Fresnel
PCO4101 *Black*



KEY FEATURES

- **Light source: halogen lamp 650 / 1.000 W**
- **PC or Fresnel lens**
- **10° - 53° proportional zoom (with Fresnel lens)**
- **5° - 61° proportional zoom (with PC lens)**

SPECIFICATIONS

- Fresnel or PC lenses
- Zoom range from 10° to 53° (with Fresnel lens)
- Zoom range from 5° to 61° (with PC lens)
- Color frame holder
- IP rating: 20
- CE approved

PHYSICAL SIZE

- Length: 438 mm (17.2 in)
- Width: 279 mm (10.9 in)
- Height: 240 mm (9.4 in)
- Height with bracket: 371 mm (14.6 in)
- Weight: PC: 7.4 Kg (16.3 lbs) | Fresnel: 6.8 Kg (15.0 lbs)

LAMP

- Halogen lamp (650 or 1.000 W)

ELECTRICAL SPECIFICATIONS AND CONNECTIONS

- AC power: 230-240 V
- Max power consumption: 650 or 1.000 W
- Socket: GX9.5

ACCESSORIES

- 4-leaf barndoor

Risalto 2.000 W

Risalto 2.000 PC
PCO4102 *Black*

Risalto 2.000 Fresnel
PCO4103 *Black*



KEY FEATURES

- **Light source: halogen lamp 2.000 W**
- **- PC or Fresnel lens**
- **- 9° - 47° proportional zoom (with Fresnel lens)**
- **- 5° - 65° proportional zoom (with PC lens)**

SPECIFICATIONS

- Fresnel or PC lenses
- Zoom range from 9° to 47° (with Fresnel lens)
- Zoom range from 5° to 65° (with PC lens)
- Color frame holder
- IP rating: 20
- CE approved

PHYSICAL SIZE

- Length: 579 mm (22.7 in)
- Width: 332 mm (13.1 in)
- Height: 297.5 mm (11.7 in)
- Height with bracket: 473 mm (18.6 in)
- Weight: PC: 12.7 Kg (16.3 lbs) | Fresnel: 11.5 Kg (25.0 lbs)

LAMP

- Halogen lamp (2.000 W)

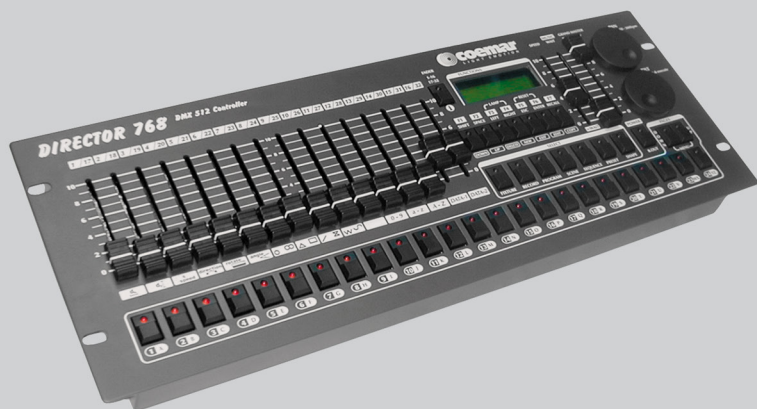
ELECTRICAL SPECIFICATIONS AND CONNECTIONS

- AC power: 230-240 V
- Max power consumption: 2.000 W
- Socket: GY16

ACCESSORIES

- 4-leaf barndoor
- Lamp 2.000 W, 230 V

Controller



Director 768

Director 768
AFO674



SPECIFICATIONS

- 24 fixtures, with maximum of 32 channels each + dimmer (768 Total DMX channels)
- Playback: 4 different sequences at the same time
- Master fader to adjust general light intensity
- Jog wheel for Pan/Tilt control to 16 bit
- 8 programmable custom buttons
- 2 faders to adjust speed and wait time from 0.3 s to 5 s
- Sequence trigger option: internal clock, manual, audio
- Pan/Tilt shape effects
- Export, back up or import shows via USB to PC
- Built-in Coemar fixture library (other libraries can be uploaded via USB or build directly on the mixer)
- CE approved

PHYSICAL SIZE

- Length: 483 mm (19.0 in)
- Width: 132 mm (5.19 in)
- Height: 83 mm (3.26 in)
- Weight: 3.8 kg (8.37 lbs)

CONTROL PROTOCOL AND PROGRAMMING

- USITT DMX512
- Setting and addressing: LCD display
- 3 x 24 buttons for sequence activation

ELECTRICAL SPECIFICATIONS AND CONNECTIONS

- AC power: 230 V, 50/60 Hz
- DMX data out: 2 x 3 pin locking XLR

ACCESSORIES

- Pc software for back up data or for upgrade device library

Bid.O.S.

Bid.O.S.
AFO662



SPECIFICATIONS

- Amplifier/opto isolator, it can manage one or two DMX nets
- LEDs indicator to test the connect functioning of the In/Out DMX lines
- CE approved

PHYSICAL SIZE

- Length: 365 mm (14.4 in)
- Width: 125 mm (4.9 in)
- Height: 47 mm (1.9 in)
- Weight: 2.5 kg (5.5 lbs)

CONTROL PROTOCOL AND PROGRAMMING

- USITT DMX512A
- Setting and addressing: binary dip switch

ELECTRICAL SPECIFICATIONS AND CONNECTIONS

- AC power: 100-240 V, 50/60 Hz
- DMX data in/out: 5 pin locking XLR
- Bid.O.S. #,662

RegoLed 5CH DMX512

RegoLed 5CH DMX512
AC10005E011



KEY FEATURES

- **PWM frequency adjustment from 500 Hz to 30000 Hz**
- **Max output current: 5 x 8A**
- **Max output power: 96 W at 12 V or 192 W at 24 V for each channel**

SPECIFICATIONS

- DC voltage Power Supply
- Directly controlled with DMX signal
- PWM frequency adjustment: from 500 to 30.000 Hz
- 31 internal programs
- 5 different electrical channels, individually controlled
- Electronic dimmer (9 selectable curves)
- Electronic strobe
- IP rating: 20

PHYSICAL SIZE

- Length: 164 mm (6.45 in)
- Width: 73 mm (2.87 in)
- Height: 38 mm (1.49 in)
- Weight: 0.5 Kg (1.1 lbs)

CONTROL PROTOCOL AND PROGRAMMING

- DMX512
- DMX channels: 7 / 5
- Setting and addressing by display
- RDM (Remote Device Management)

ELECTRICAL SPECIFICATIONS AND CONNECTIONS

- DC Power: 12 V – 24 V
- Max output current: 5 x 8 A
- Max output power: 5 x (96 – 192) W
- DMX In/Out ports: RJ45, 5 pin locking XLR

RegoBox 5CH DMX512

350mA

RegoBox 5CH DMX512 - 350mA
AC10005E010



KEY FEATURES

- **PWM frequency adjustment from 500 Hz to 30000 Hz**
- **Max output current: 5 x 350mA**
- **Max output power: 4.2 W at 12 V or 16.8 W at 48 V for each channel**

SPECIFICATIONS

- Digital control at 350 mA constant current
- Directly controlled with DMX signal
- Guaranteed flicker-free operation: PWM frequency adjustment from 500 to 30.000 Hz
- 31 internal programs
- 5 different electrical channels individually controlled
- Electronic dimmer (9 selectable curves)
- Electronic strobe
- IP rating: 20

PHYSICAL SIZE

- Length: 164 mm (6.45 in)
- Width: 73 mm (2.87 in)
- Height: 38 mm (1.49 in)
- Weight: 0.5 Kg (1.1 lbs)

CONTROL PROTOCOL AND PROGRAMMING

- USITT DMX512
- DMX channels: 7 / 5
- Setting and addressing by display
- RDM (Remote Device Management)

ELECTRICAL SPECIFICATIONS AND CONNECTIONS

- DC Power: 12 V – 48 V
- Max output current: 5 x 350 mA
- Max output power: 5 x (4.2 – 16.8) W
- DMX In/Out ports: RJ45, 5 pin locking XLR

RegoBox 5CH DMX512

700mA

RegoLed 5CH DMX512 - 700mA
AC10005E012



KEY FEATURES

- **PWM frequency adjustment from 500 Hz to 30000 Hz**
- **Max output current: 5 x 700mA**
- **Max output power: 8.4 W at 12 V or 33.6 W at 48 V for each channel**

SPECIFICATIONS

- Digital control at 700 mA constant current
- Directly controlled with DMX signal
- Guaranteed flicker-free operation: PWM frequency adjustment from 500 to 30.000 Hz
- Electronic dimmer (from 0.1 to 9.9)
- Electronic strobe
- IP rating: 20

PHYSICAL SIZE

- Length: 164 mm (6.45 in)
- Width: 73 mm (2.87 in)
- Height: 38 mm (1.49 in)
- Weight: 0.5 Kg (1.1 lbs)

CONTROL PROTOCOL AND PROGRAMMING

USITT DMX512A
DMX channels: 5 / 1
Setting and addressing by display
RDM (Remote Device Management)

ELECTRICAL SPECIFICATIONS AND CONNECTIONS

- DC Power: 12 Vdc - 48 Vdc
- Max output current: 5 x 700mA
- Max output power: 5 x (8.4 - 33.6) W
- DMX In/Out ports: RJ45, 5 pin locking XLR

Concept Design 384

Concept Design 384
AC10005E007



KEY FEATURES

- **A digital controller for a maximum of 384 LED at 350 mA constant current**
- **8 RJ45 independent outputs**
- **Multifunction display for DMX addressing, test, settings, measures and diagnostic**
- **4 channels for each output**

SPECIFICATIONS

- Digital control for max 384 LEDs at 350mA constant current
- Controllable via DMX512 or remote control
- 8 RJ45 independent outputs
- Digital dimmer of the controlled LEDs
- Electronic strobe: synchronized, random, pulse effect
- Multifunction display for DMX addressing, test, settings, measures, diagnostic
- Compatible with DR1+ for remote control and software updates
- IP rating: 20
- CE approved

PHYSICAL SIZE

- Length: 355 mm (14.0 in)
- Width: 482.6 mm (19.0 in)
- Height: 44.4 mm (1.7 in)
- Weight: 3.5 Kg (7.7 lbs)

CONTROL PROTOCOL AND PROGRAMMING

- USITT DMX512A
- DMX channels: 38 / 9 / 4
- Setting, addressing, testing and measurements via LEDs display
- Infrared control
- Internal automatic programs
- Master and slave function

ELECTRICAL SPECIFICATIONS AND CONNECTIONS

- AC power: 90-250 V, auto sensing, 50/60Hz
- Max output current: 4 channels for 8 outputs at 350mA
- Constant current output: 350 mA
- Power consumption: 3 A at 230 V, 5 A at 115 V
- DMX data in/out: 5 pin locking XLR

ACCESSORIES

- HUB 6CH RJ45
- RJ45 T conn.
- RJ45 T conn. solo
- Connection cable RJ45, 1 mt. (not IP)
- Connection cable RJ45, 5 mt. (not IP)
- Connection cable RJ45, 10 mt. (not IP)
- Remote control
- IR RJ12 sensor
- Connection cable RJ45/RJ12 for IR sensor 50 cm



Coemar Lighting S.r.l.

Via Carpenedolo, 90

46043 Castiglione delle Stiviere

Mantova - Italy

ph. +39 0376 1514412

fax +39 0376 1514380

www.coemar.com