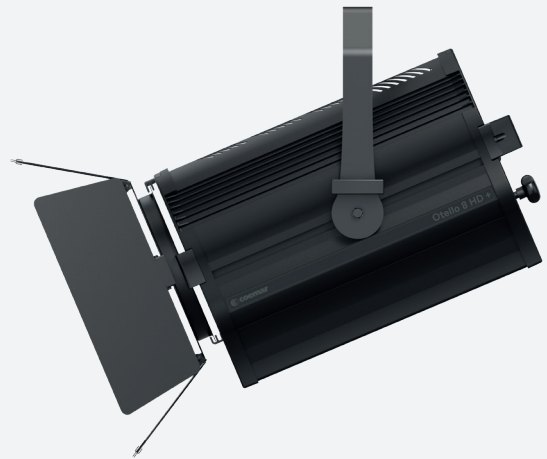


Otello 8 HD FullSpectrum +

Last update:
11/09/2023



Otello 8 HD + with 8 leaf barndoor

Introducing

● Developed to offer the best solution in the stage lighting field focussing on **theatre and TV studios applications**, Otello Led Fresnel incorporates all traditional characteristics of a Fresnel light such as the **distinctive soft-edged** and **very wide beam** and the **smooth and homogeneous light field**.

The improved **HD electronic** with an advanced LED controller guarantees a smooth 20 bit dimming and a superlative **color mixing**.

Next to the traditional manual or P.O. option, Otello offers an optional motorized zoom, which together with a modern design and Oled display with on-board selector for quick setting represents the state of the art in terms of LED Fresnel range. The family consists of 2 fixtures with lenses of 150 mm (5,9 inch) and 200 mm (7,87 inch). All variants include COB, VariWhite, Studio and FullSpectrum 6 LEDs in 3 power steps.

● **FullSpectrum** : 2.700 – 20.000 K (CRI average> 95); Red, Green, Blue, Cyan, Lime, Amber color mixing with Green-Magenta adjustment

● **VariWhite | Tungsten | Daylight**: white engines with the Tungsten and Daylight COB LED calibrated respectively at 3.000 K and 5.600 K CCT and a tunable white source ranging from 2.800 to 6.500 K (CRI > 94) for the VariWhite version

Key Features



- Red, Green, Blue, Cyan, Lime, Amber light source, 20 bit color mixing
- Green-Magenta adjustment
- Color mixing with hue and saturation control



- High CRI> 95



- CCT 2.700 K → 20.000 K



- Fresnel lens (diameter: 200 mm / 7.87 in)
- Zoom range from 7° to 68° half peak angle
- Available with Manual or Motorized Zoom



- Extruded aluminum, flame-retardant technopolymer reinforced with fiberglass



- Custom color on request (optional)



- Manual (standard) or Pole Operated Pan-Tilt (Optional)

| General | |
|---------------------------------------|--|
| ● LED Source | RGBCLA COB LED (Red, Green, Blue, Cyan, Lime, Amber) - Color mixing with hue and saturation control |
| ● CCT Range | ● ● ● ● CCT from 2.700 K to 10.000 K (through DMX) or up to 20.000 K (through Display) |
| ● Color Rendition Average | CRI> 95, TLCI> 95 |
| ● Dimming | 8 or 16 bit, 5 selectable curves: Exponential, Logarithmic, Linear, Halo and Standard |
| ● Dimming Smooth Selection | Fast, Slow and Very Slow |
| ● Strobe | Electronic strobe, synchronized, random, pulse effect |
| ● Lens | Glass fresnel lens (diameter: 200 mm / 7.87 in) |
| ● Optical | Zoom range from 7° to 68° (motorized, manual or PO zoom available) |
| ● Green-Magenta adjustment | Continuously adjustable (Full Minusgreen to Full Plusgreen) |
| ● Color saturation function | Generated colors fades to White tone selected with the CCT channel |
| ● Dim to Warm function | Halogen lamp dimmer simulation |
| ● Camera flicker control/Hz range | Yes: 20.000Hz |
| ● Calibrated Cob | Yes |
| ● L80 Rating (hours to 80% output) | 50.000 Hours |
| Electrical | |
| ● Voltage Input | 80-264 V, 50/60 Hz, auto-sensing |
| ● Power Consumption | 330 W Maximum - 1.53 A at 230V, 2.93 A at 115V - cosφ: 0.94 (manual / P.O. zoom) 340 W Maximum - 1.57 A at 230V, 3.02 A at 115V - cosφ: 0.94 (motorized zoom) |
| ● Power Connection | In and Out PowerCON TRUE1 Top connectors to feed up to 8 (at 230V) or 4 (at 115 V) fixtures |
| ● Data Connection | In and Out DMX 5 pin locking XLR connectors |
| Thermal | |
| ● Ambient Operating Temperature | 0°C - +40°C (32°F - 104°F) |
| ● Fan (controllable) | Yes, 4 different settings: Silent, Studio, Auto, DMX Regulated |
| Control | |
| ● Protocols | DMX-512, RDM (Remote Device Management), Wireless (optional By LumenRadio) |
| ● RDM configuration | Yes |
| ● DMX Channels | Manual / PO zoom version: 16 / 7 / 1 / Studio mode / RGB mode / fine RGB mode / Sunrise mode Motorized zoom version: 17 / 8 / Studio mode / RGB mode / Fine RGB mode / Sunrise Mode |
| ● Display | Graphic OLED with on-board selector for quick setting |
| ● Firmware upgrade | Through DMX with RDM Upgrade USB interface (code AC10011A001) |
| Physical | |
| ● Yoke | Manual (standard) or Pole Operated Pan-Tilt (Optional) |
| ● Materials | Extruded aluminum, flame-retardant technopolymer reinforced with fiberglass |
| ● Weight | 13.5 Kg / 29.76 lbs |
| ● Length | 489 mm / 19.25 in |
| ● Height | 315 mm / 12.40 in |
| ● Height with Yoke | With Manual Yoke: 437 mm / 17.20 in - With Pole Operated Yoke: 621 mm / 24.45 in |
| ● Width | With Manual Yoke: 313 mm / 12.32 in - With Pole Operated Yoke: 406 mm / 15.98 in |
| ● IP Rating | IP20 |
| ● Color options | Black (standard), custom color on request (optional) |
| Included accessories | |
| BC10044A002 | 8-Leaf Barndoor |
| GKIT17 (USA) / GKIT16 (EU) | 1.5 m power cable with PowerCON TRUE1 Top and bare ends |
| BC10044A006 | Color frame holder |



Otello 8 HD + (manual zoom)
Rear Panel with the new OLED
display



Otello 8 HD + with
Pole Operated Yoke and Pole Operated
Zoom

Otello 8 HD+ PO version / Rear Panel

DMX Charts - Manual Zoom

16 Channels

01 → Master Dimmer
02 → Red
03 → Green
04 → Blue
05 → Cyan
06 → Lime
07 → Amber
08 → Strobe Effect
09 → Dimmer Fine
10 → Special Functions
11 → Red Tone
12 → Green Tone
13 → Blue Tone
14 → White Tone
15 → Green Saturation
16 → Saturation

7 Channels

01 → Master Dimmer
02 → Red
03 → Green
04 → Blue
05 → Cyan
06 → Lime
07 → Amber

Studio Mode

01 → Master Dimmer
02 → White Tone
03 → Green Saturation
04 → Saturation
05 → Hue
06 → Dimmer Fine
07 → Special Functions

1 Channel

01 → Master Dimmer - Color
Temperature Settable by Display

RGB Mode

01 → Master Dimmer
02 → Dimmer Fine
03 → Red
04 → Green
05 → Blue
06 → White Tone
07 → Saturation
08 → Strobe Effect
09 → Special Functions

Fine RGB Mode

01 → Master Dimmer
02 → Dimmer Fine
03 → Red
04 → Red Fine
05 → Green
06 → Green Fine
07 → Blue
08 → Blue Fine
09 → White Tone
10 → Saturation
11 → Strobe
12 → Special Functions

Sunrise Mode

01 → Master Dimmer
02 → Dimmer Fine
03 → Proportional CCT
04 → Step CCT
05 → Green Saturation
06 → Special Functions

17 Channels

01 → Master Dimmer
 02 → Red
 03 → Green
 04 → Blue
 05 → Cyan
 06 → Lime
 07 → Amber
 08 → Strobe Effect
 09 → Dimmer Fine
 10 → Special Functions
 11 → Red Tone
 12 → Green Tone
 13 → Blue Tone
 14 → White Tone
 15 → Green Saturation
 16 → Saturation
 17 → Zoom

8 Channels

01 → Master Dimmer
 02 → Red
 03 → Green
 04 → Blue
 05 → Cyan
 06 → Lime
 07 → Amber
 08 → Zoom

Studio Mode

01 → Master Dimmer
 02 → White Tone
 03 → Green Saturation
 04 → Saturation
 05 → Hue
 06 → Dimmer Fine
 07 → Special Functions
 08 → Zoom

RGB Mode

01 → Master Dimmer
 02 → Dimmer Fine
 03 → Red
 04 → Green
 05 → Blue
 06 → White Tone
 07 → Saturation
 08 → Strobe Effect
 09 → Special Functions
 10 → Zoom

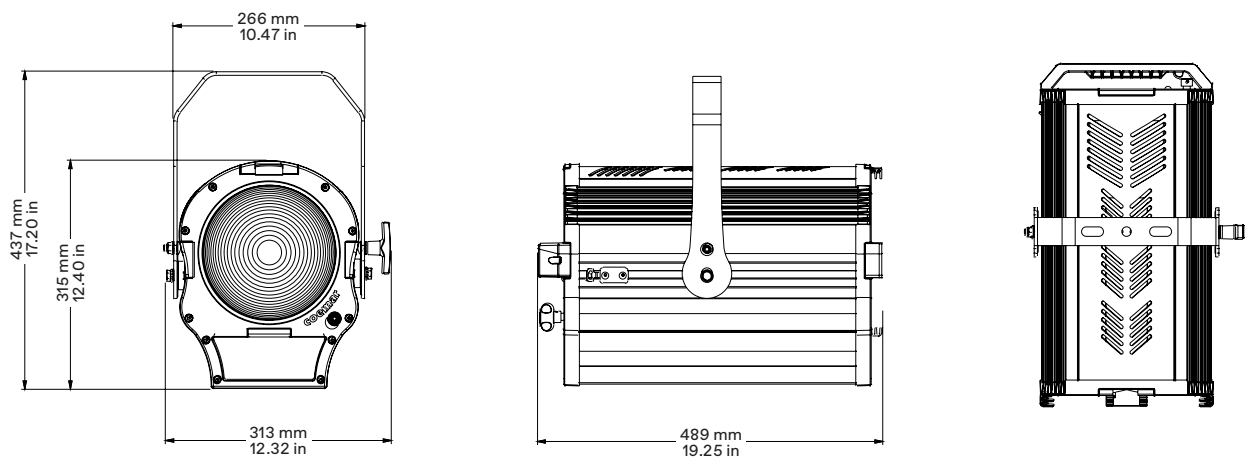
Fine RGB Mode

01 → Master Dimmer
 02 → Dimmer Fine
 03 → Red
 04 → Red Fine
 05 → Green
 06 → Green Fine
 07 → Blue
 08 → Blue Fine
 09 → White Tone
 10 → Saturation
 11 → Strobe
 12 → Special Functions
 13 → Zoom

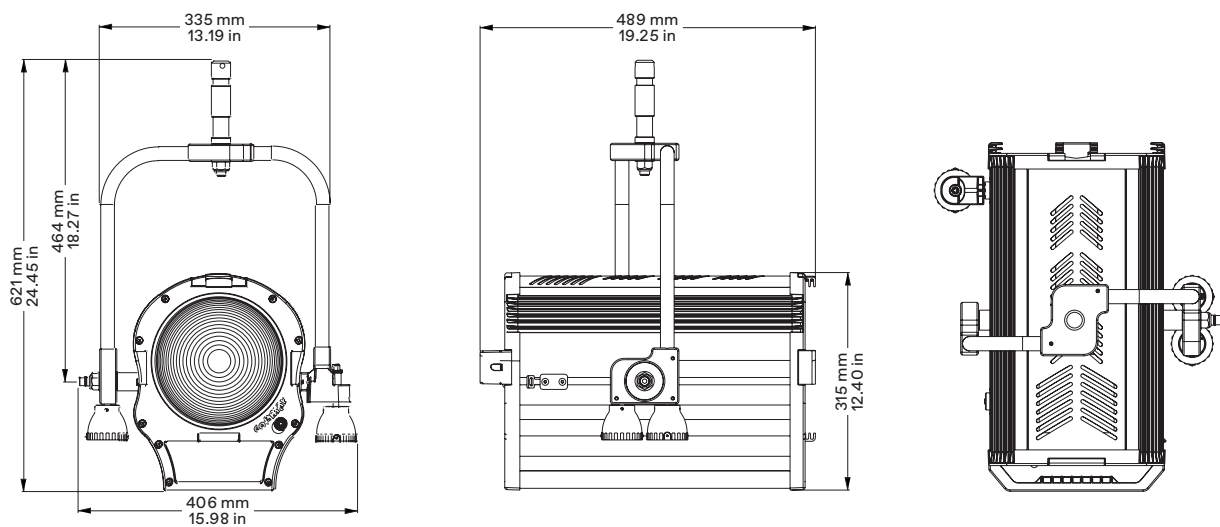
Sunrise Mode

01 → Master Dimmer
 02 → Dimmer Fine
 03 → Proportional CCT
 04 → Step CCT
 05 → Green Saturation
 06 → Special Functions
 07 → Zoom

Drawing Size - Manual Yoke Version



Drawing Size - Pole operated Yoke Version



Models

| Product | Code |
|--|-----------|
| Otello 8 FullSpectrum + Manual Yoke, Manual Zoom | F150Q090Q |
| Otello 8 FullSpectrum + Manual Yoke, Motorized Zoom | F150Q000Q |
| Otello 8 FullSpectrum + Pole Operated | F150Q010Q |



Theatre - Teatro Lirico di Cagliari, Italy

| | |
|----------|----------------|
| Products | Otello 8 HD FS |
| Version | Motorized Zoom |

● Coemar Lighting S.r.l.

Via Carpenedolo, 90
46043, Castiglione delle Stiviere (MN) – Italy

P. +39 0376 1514412
M1. info@coemar.com
M2. service@coemar.com
W. coemar.com

P.iva – C.f. 02415330204

