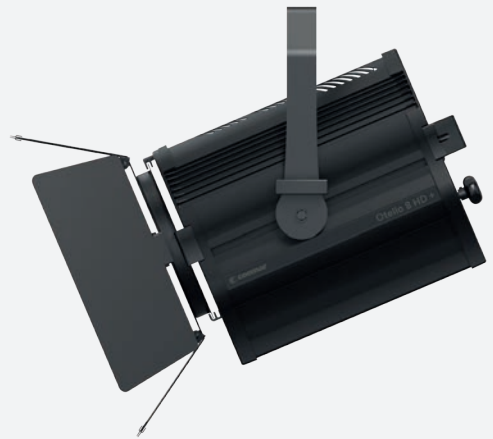


Otello 8 HD VariWhite +

Last update:
05/01/2024



Otello 8 HD + with 8 leaf barndoor

Introducing

● Developed to offer the best solution in the stage lighting field focussing on **theatre and TV studios applications**, Otello Led Fresnel incorporates all traditional characteristics of a Fresnel light such as the **distinctive soft-edged** and **very wide beam** and the **smooth and homogeneous light field**.

The improved **HD electronic** with an advanced LED controller guarantees a smooth 20 bit dimming and a superlative **color mixing**.

Next to the traditional manual or P.O. option, Otello offers an optional motorized zoom, which together with a modern design and Oled display with on-board selector for quick setting represents the state of the art in terms of LED Fresnel range. The family consists of 2 fixtures with lenses of 150 mm (5,9 inch) and 200 mm (7,87 inch). All variants include COB, VariWhite, Studio and FullSpectrum 6 LEDs in 3 power steps.

● **FullSpectrum** : 2.700 – 20.000 K (CRI average > 95); Red, Green, Blue, Cyan, Lime, Amber color mixing with Green-Magenta adjustment

● **VariWhite | Tungsten | Daylight**: white engines with the Tungsten and Daylight COB LED calibrated respectively at 3.000 K and 5.600 K CCT and a tunable white source ranging from 2.800 to 6.500 K (CRI > 94) for the VariWhite version

Key Features



● VariWhite COB LED



● High CRI > 95



● CCT from 2.700 K → 6.500 K



● High Lumen flux and flat field



● Fresnel lens (diameter: 200 mm / 7.87 in)
● Zoom range from 11° to 41° half peak angle
● Available with Manual or Motorized Zoom



● Extruded aluminum, flame-retardant technopolymer reinforced with fiberglass



● Custom color on request (optional)



● Manual (standard) or Pole Operated Pan-Tilt (Optional)

General	
● LED Source	VariWhite COB LED
● CCT Range	●●●●● 2.700 K → 6.500 K
● Color Rendition Average	CRI> 95, TLCI> 95
● Dimming	8 or 16 bit, 5 selectable curves: Exponential, Logarithmic, Linear, Halo and Standard
● Dimming Smooth Selection	Fast, Slow and Very Slow
● Strobe	Electronic strobe, synchronized, random, pulse effect
● Lens	Glass Fresnel lens (diameter: 200 mm / 7.87 in)
● Optical	Zoom range from 11° to 41° half peak angle (motorized, manual or PO zoom available)
● Camera flicker control/Hz range	Yes: 20.000Hz
● Calibrated Cob	Yes
● L80 Rating (hours to 80% output)	50.000 Hours
Electrical	
● Voltage Input	80-264 V, 50/60 Hz, auto-sensing
● Power Consumption	340 W Maximum - 1.52 A at 230V, 3.05 A at 115V - cosφ: 0.94 (manual / P.O. zoom) 330 W Maximum - 1.61 A at 230V, 3.23 A at 115V - cosφ: 0.94 (motorized zoom)
● Power Connection	In and Out PowerCON TRUE1 Top connectors to feed up to 8 (at 230V) or 4 (at 115 V) fixtures
● Data Connection	In and Out DMX 5 pin locking XLR connectors
Thermal	
● Ambient Operating Temperature	0°C - +40°C (32°F - 104°F)
● Fan (controllable)	Yes, 4 different settings: Silent, Studio, Auto, DMX Regulated
Control	
● Protocols	DMX512A, RDM (Remote Device Management), Wireless (optional By LumenRadio)
● RDM configuration	Yes
● DMX Channels	Motorized Zoom: 6 / 4 / Sunrise / Raw / MK1 / 7 Channels Manual Zoom/P.O.: 5 / 2 / 1 / Sunrise / Raw / MK1 / 6 Channels
● Display	Graphic OLED with on-board selector for quick setting
● Firmware upgrade	Through DMX with RDM Upgrade USB interface (code AC10011A001)
Physical	
● Yoke	Manual (standard) or Pole Operated Pan-Tilt (optional)
● Materials	Extruded aluminum, flame-retardant technopolymer reinforced with fiberglass
● Weight	With Manual Yoke: 13.5 Kg / 29.76 lbs - With Pole Operated Yoke: 15 Kg / 33.07 lbs
● Length	409 mm / 16.10 in
● Height	315 mm / 12.40 in
● Height with Yoke	With Manual Yoke: 437 mm / 17.20 in - With Pole Operated Yoke: 623 mm / 24.53 in
● Width	With Manual Yoke: 317 mm / 12.48 in - With Pole Operated Yoke: 406 mm / 15.99 in
● IP Rating	IP20
● Color options	Black (standard), custom color on request (optional)
Included accessories	
BC10044A002	8-Leaf Barndoor
GKIT17 (USA) / GKIT16 (EU)	1.5 m power cable with PowerCON TRUE1 Top and bare ends
BC10044A006	Color frame holder



Otello 8 HD + (manual zoom)
Rear Panel with the new OLED display



Otello 8 HD + with
Pole Operated Yoke and Pole Operated Zoom

Otello 8 HD+ PO version / Rear Panel

DMX Charts - Manual Zoom

5 Channels

- 01 → Master Dimmer
- 02 → Dimmer Fine
- 03 → White Tone
- 04 → Strobe Effect
- 05 → Special Functions

Raw Mode

- 01 → Warm White Led
- 02 → Warm White Led Fine
- 03 → Cold White Led
- 04 → Cold White Led Fine

2 Channel

- 01 → Master Dimmer
- 02 → White Tone

MK1 Mode

- 01 → Master Dimmer
- 02 → White Tone

1 Channel

- 01 → Master Dimmer - Color Temperature Settable by Display

6 Channels Mode

- 01 → Master Dimmer
- 02 → Dimmer Fine
- 03 → White Tone
- 04 → White Temperature Fine
- 05 → Strobe Effect
- 06 → Special Function

Sunrise Mode

- 01 → Master Dimmer
- 02 → Dimmer Fine
- 03 → Proportional White Tone
- 04 → Step White Tone
- 05 → Special Functions

DMX Charts - Motorized Zoom

6 Channels

- 01 → Master Dimmer
- 02 → Dimmer Fine
- 03 → White Tone
- 04 → Strobe Effect
- 05 → Special Functions
- 06 → Zoom

MK1 Mode

- 01 → Master Dimmer
- 02 → White Tone
- 03 → Special Functions
- 04 → Zoom

4 Channel

- 01 → Master Dimmer
- 02 → White Tone
- 03 → Special Functions
- 04 → Zoom

7 Channels Mode

- 01 → Master Dimmer
- 02 → Dimmer Fine
- 03 → White Tone
- 04 → White Temperature Fine
- 05 → Strobe Effect
- 06 → Special Function
- 07 → Zoom

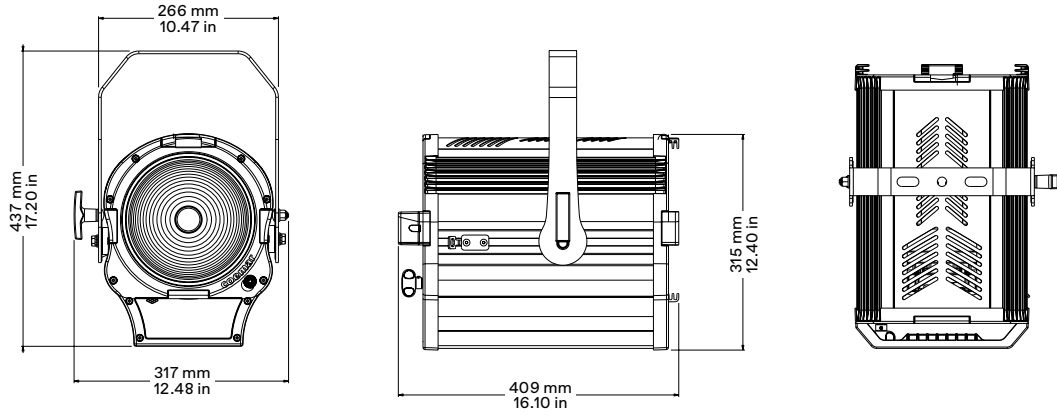
Sunrise Mode

- 01 → Master Dimmer
- 02 → Dimmer Fine
- 03 → Proportional White Tone
- 04 → Step White Tone
- 05 → Special Functions
- 06 → Zoom

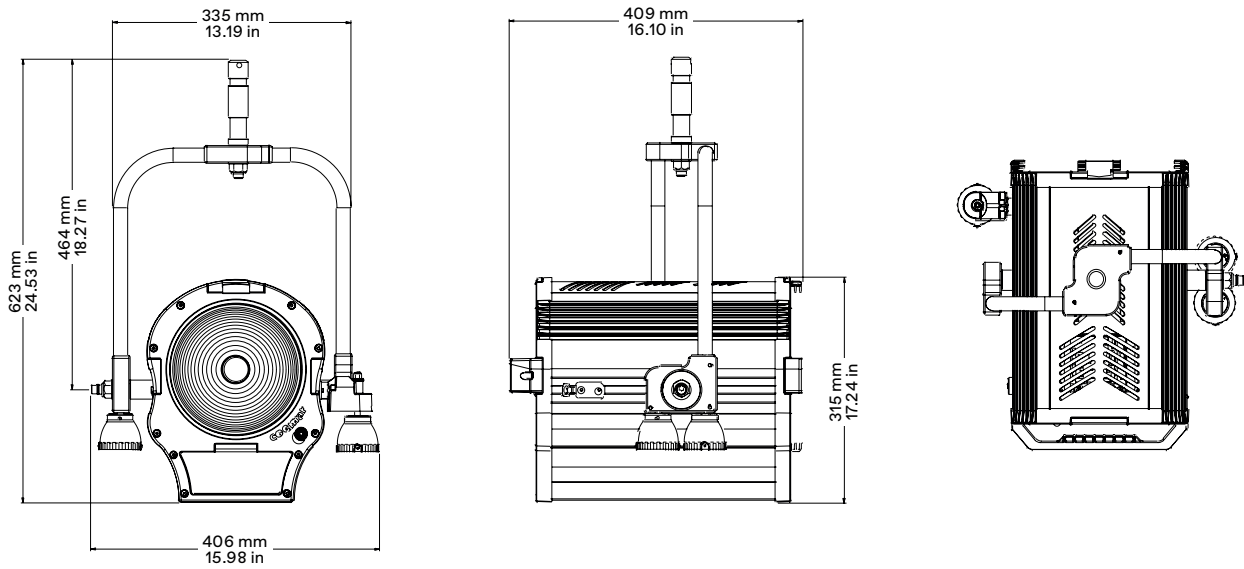
Raw Mode

- 01 → Warm White Led
- 02 → Warm White Led Fine
- 03 → Cold White Led
- 04 → Cold White Led Fine
- 05 → Special Functions
- 06 → Zoom

Drawing Size - Manual Yoke Version



Drawing Size - Pole operated Yoke Version



Models

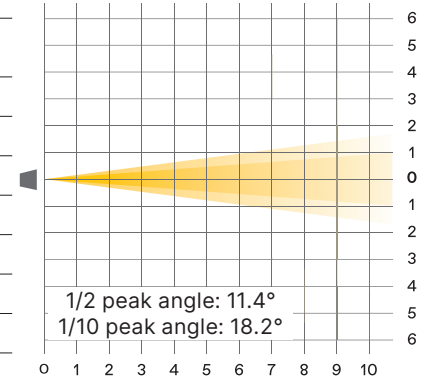
Product	Code
Otello 8 VariWhite + Manual Yoke, Manual Zoom	F144G090Q
Otello 8 VariWhite + Manual Yoke, Motorized Zoom	F144G000Q
Otello 8 VariWhite + Pole Operated	F144G010Q

Otello 8 HD VariWhite +

Measurements taken at 4.3 meters

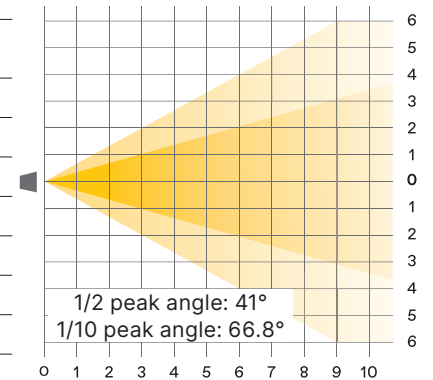
Minimum Zoom

Distance(m)	1	2	3	4	5	6	7	8	9	10	
lux	2.700 K	115063	28766	12785	7191	4603	3196	2348	1798	1421	1151
	3.200 K	142761	35690	15862	8923	5710	3966	2913	2231	1762	1428
	4.000 K	163766	40941	18196	10235	6551	4549	3342	2559	2022	1638
	5.600 K	177153	44288	19684	11072	7086	4921	3615	27687	2187	1772
	6.500 K	165874	41468	18430	10367	6635	4608	3385	2592	2048	1659
1/2 P.A. Ø (m)	0.20	0.40	0.60	0.80	1.00	1.20	1.40	1.60	1.80	2.00	
1/10 P.A. Ø (m)	0.32	0.64	0.96	1.28	1.60	1.92	2.24	2.56	2.88	3.20	
2.700 K	CRI 97.1	TLCI 96.9									
3.200 K	CRI 96.4	TLCI 98.0									
4.000 K	CRI 95.3	TLCI 98.3									
5.600 K	CRI 96.2	TLCI 98.9									
6.500 K	CRI 97.6	TLCI 98.9									



Maximum Zoom

Distance(m)	1	2	3	4	5	6	7	8	9	10	
lux	2.700 K	17381	4345	1931	1086	695	483	355	272	215	174
	3.200 K	21855	5464	2428	1366	874	607	446	341	270	219
	4.000 K	25535	6384	2837	1596	1021	709	521	399	315	255
	5.600 K	27661	6915	3073	1729	1106	768	565	432	341	277
	6.500 K	25978	6495	2886	1624	1039	722	530	406	321	260
1/2 P.A. Ø (m)	0.75	1.50	2.24	2.99	3.74	4.49	5.23	5.98	6.73	7.48	
1/10 P.A. Ø (m)	1.32	2.64	3.96	5.28	6.59	7.91	9.23	10.55	11.87	13.19	
2.700 K	CRI 96.2	TLCI 96.6									
3.200 K	CRI 95.3	TLCI 97.6									
4.000 K	CRI 94.4	TLCI 98.1									
5.600 K	CRI 95.3	TLCI 98.8									
6.500 K	CRI 96.6	TLCI 98.9									



Otello 8 HD VariWhite +, Minimum Zoom, 2.700K

Measurements taken at 4.3 meters

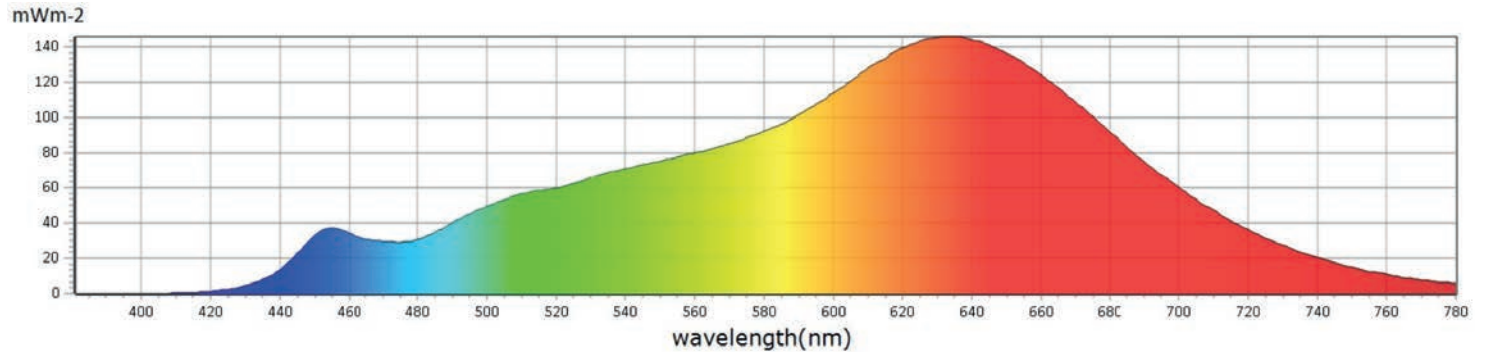
General

● CCT	2688 K
● x	0,4631
● y	0,4150
● LambdaD	584 nm
● LambdaP	632 nm

Measurements

CCT : 2688 K	x10 : 0,4681	delta-x : 0,0023	LambdaD : 584 nm	PPFD : 108,1 $\mu\text{mol}\cdot\text{m}^{-2}\cdot\text{s}^{-1}$	S/P : 1,34	R3 : 98,9	R10 : 97,6
LUX : 6223 lx	y10 : 0,4147	delta-y : 0,0042	LambdaP : 632 nm	PFD : 119,7 $\mu\text{mol}\cdot\text{m}^{-2}\cdot\text{s}^{-1}$	IRR : 23,61	R4 : 97,3	R11 : 94,5
I-Time : 1800 us	u'10 : 0,2659	delta-u' : -0,0004	Purity : 63,51%	PFD-B : 8,505 $\mu\text{mol}\cdot\text{m}^{-2}\cdot\text{s}^{-1}$	CQS : 93,4	R5 : 97,8	R12 : 91,1
x : 0,4631	v'10 : 0,5302	delta-v' : 0,0019	fc : 578,3	PFD-G : 36,03 $\mu\text{mol}\cdot\text{m}^{-2}\cdot\text{s}^{-1}$	CRI : 97,1	R6 : 95,3	R13 : 98,0
y : 0,4150	X : 6944,55	Duv : 0,0013	Rf : 93,6	PFD-R : 63,52 $\mu\text{mol}\cdot\text{m}^{-2}\cdot\text{s}^{-1}$	TLCI : 96,9	R7 : 96,2	R14 : 98,5
u' : 0,2626	Y : 6222,76	MEL : 3175 lx	Rg : 98,1	PFD-UV : 0,0000 $\mu\text{mol}\cdot\text{m}^{-2}\cdot\text{s}^{-1}$	R1 : 98,5	R8 : 94,3	R15 : 97,6
v' : 0,5295	Z : 1827,42	LambdaPV : 145,9	GAI : 45,0	PFD-FR : 11,62 $\mu\text{mol}\cdot\text{m}^{-2}\cdot\text{s}^{-1}$	R2 : 98,5	R9 : 88,1	

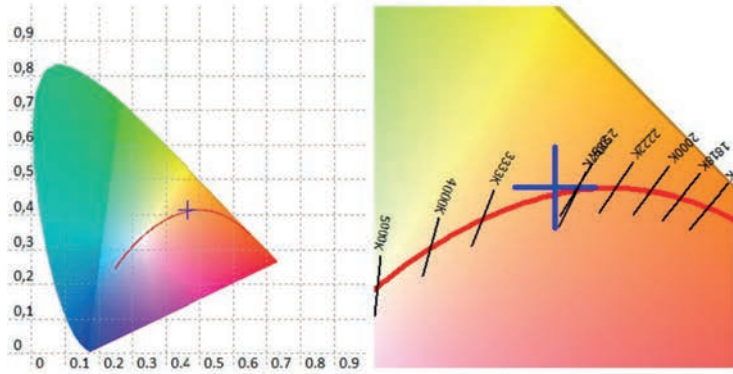
Spectrum



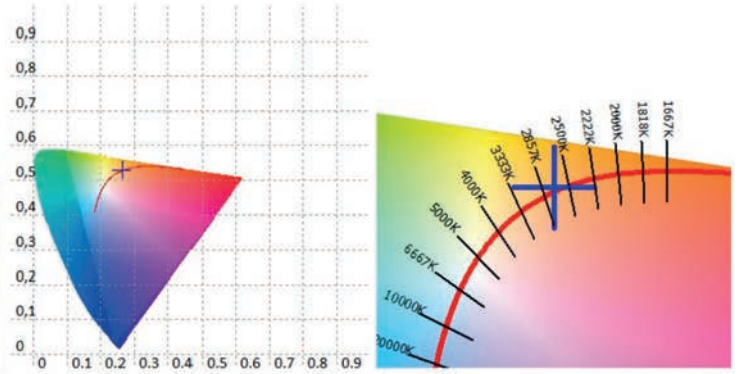
Otello 8 HD VariWhite +, Minimum Zoom, 2.700K

Measurements taken at 4.3 meters

CIE 1931



CIE 1976



CRI values, only R1-R8 are used to calculate final CRI

R1	R2	R3	R4	R5	R6	R7	R8	R9	R10	R11	R12	R13	R14	R15
98,5	98,5	98,9	97,3	97,8	95,3	96,2	94,3	88,1	97,6	94,5	91,1	98,0	98,5	97,6

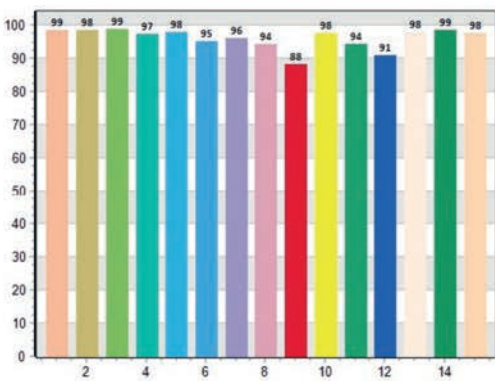
TM30 C values, 16 binned values out of total of 99 C values

C1	C2	C3	C4	C5	C6	C7	C8	C9	C10	C11	C12	C13	C14	C15	C16
94,5	97,2	94,6	90,0	93,1	93,4	91,4	92,9	92,2	93,2	94,4	90,6	90,8	91,6	91,6	90,6

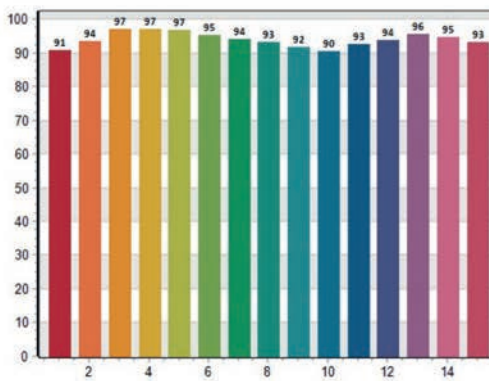
CQS Q values

Q1	Q2	Q3	Q4	Q5	Q6	Q7	Q8	Q9	Q10	Q11	Q12	Q13	Q14	Q15
90,7	93,6	97,0	97,0	96,7	95,3	94,0	93,0	91,6	90,3	92,7	93,8	95,6	94,8	93,3

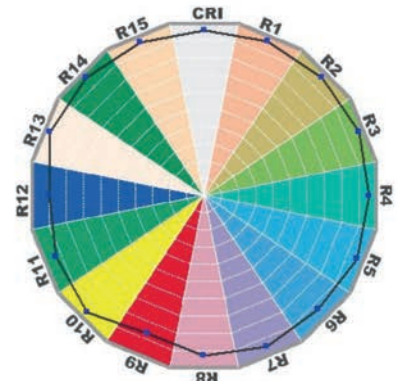
CRI: 97.10



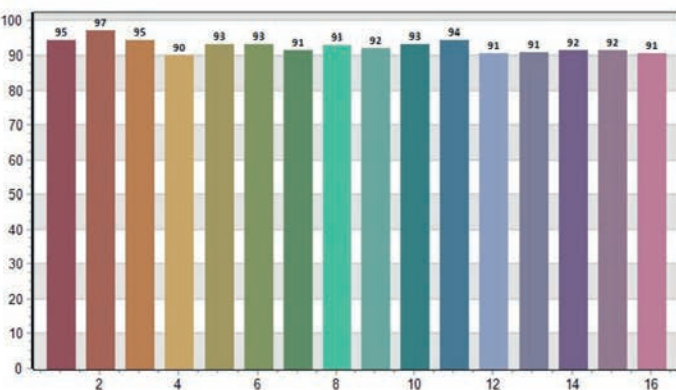
CQS: 93.40



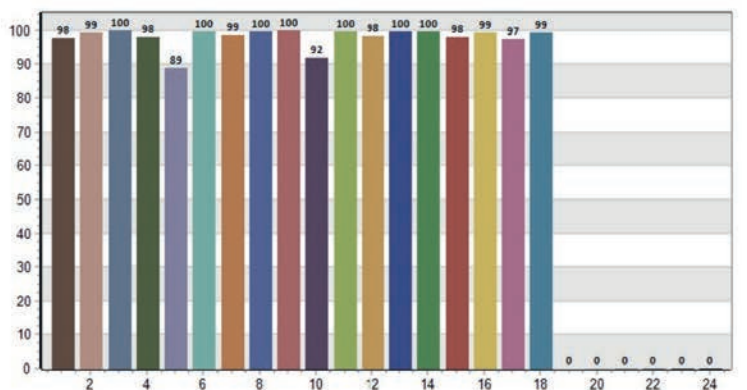
CRI-2



TM30: 93.55



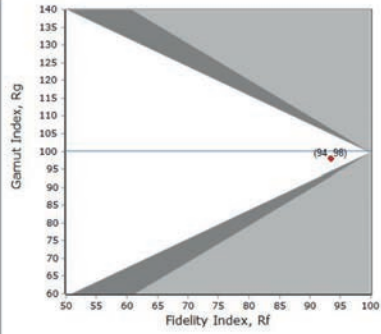
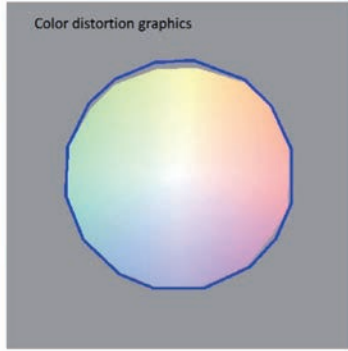
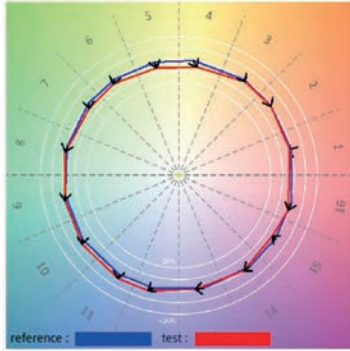
TLCI: 96.86



Otello 8 HD VariWhite +, Minimum Zoom, 2.700K

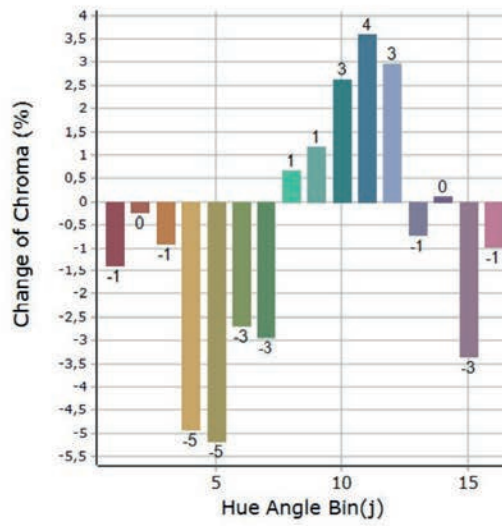
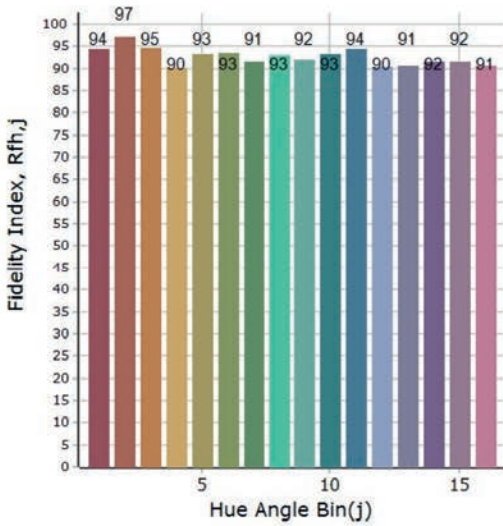
Measurements taken at 4.3 meters

General Color Rendition



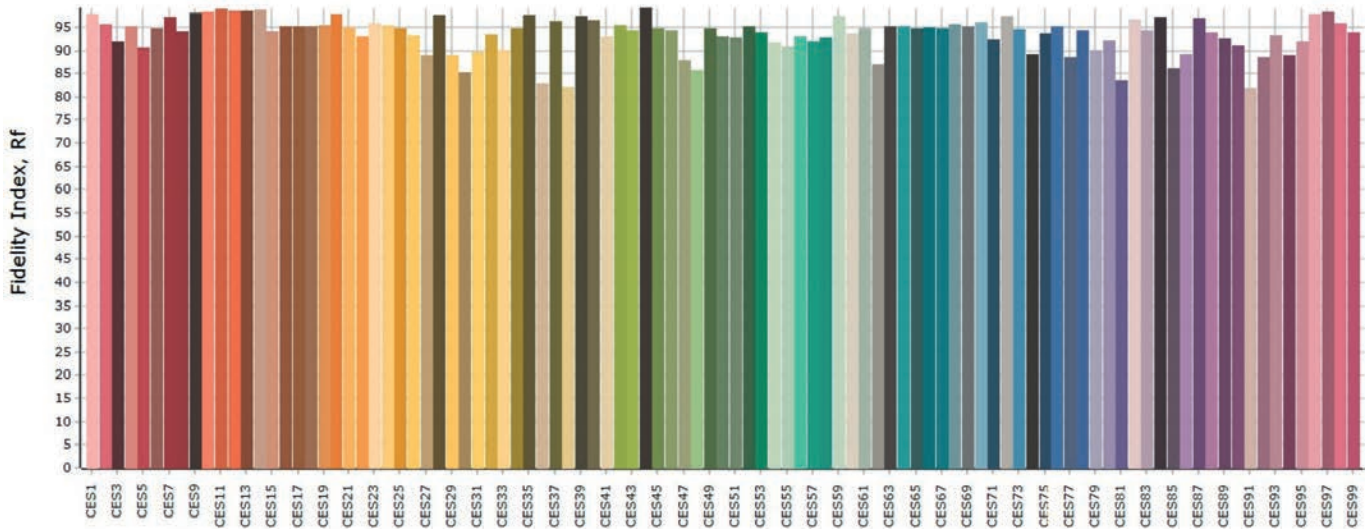
Rf 93,5 Fidelity index Rf
Rg 98,1 Gamut index Rg

Color Rendition by Hue



Hue Bin	Graphic shifts (%)		
	Rf	Chroma	Hue
1	94,4	-1,4%	1,1%
2	97,2	-0,2%	-0,8%
3	94,7	-0,9%	-2,0%
4	90,1	-4,9%	-3,9%
5	93,2	-5,2%	-0,4%
6	93,5	-2,7%	3,1%
7	91,4	-2,9%	3,9%
8	92,9	0,7%	4,6%
9	92,1	1,2%	4,0%
10	93,1	2,6%	3,3%
11	94,3	3,6%	1,5%
12	90,5	3,0%	-3,6%
13	90,7	-0,7%	-6,5%
14	91,5	0,1%	-6,0%
15	91,6	-3,3%	0,7%
16	90,5	-1,0%	-6,5%

Color Fidelity by Sample



Otello 8 HD VariWhite +, Maximum Zoom, 2.700K

Measurements taken at 4.3 meters

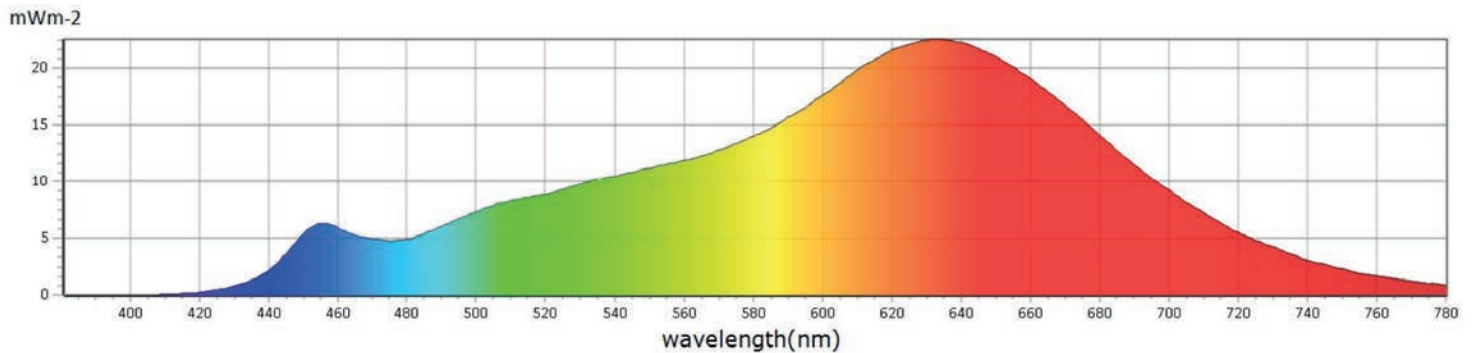
General

● CCT	2645 K
● x	0,4625
● y	0,4083
● LambdaD	585 nm
● LambdaP	633 nm

Measurements

CCT : 2645 K	x10 : 0,4669	delta-x : -0,0019	LambdaD : 585 nm	PPFD : 16,53 $\mu\text{molm}^{-2}\text{s}^{-1}$	S/P : 1,34	R3 : 98,4	R10 : 94,8
LUX : 940,7 lx	y10 : 0,4083	delta-y : -0,0033	LambdaP : 633 nm	PFD : 18,32 $\mu\text{molm}^{-2}\text{s}^{-1}$	IRR : 3,615	R4 : 97,7	R11 : 94,0
I-Time : 12000 us	u'10 : 0,2681	delta-u' : 0,0003	Purity : 61,31%	PFD-B : 1,364 $\mu\text{molm}^{-2}\text{s}^{-1}$	CQS : 95,0	R5 : 96,8	R12 : 88,6
x : 0,4625	v'10 : 0,5275	delta-v' : -0,0015	fc : 87,43	PFD-G : 5,405 $\mu\text{molm}^{-2}\text{s}^{-1}$	CRI : 96,2	R6 : 92,9	R13 : 96,9
y : 0,4083	X : 1065,69	Duv : -0,0011	Rf : 94,3	PFD-R : 9,764 $\mu\text{molm}^{-2}\text{s}^{-1}$	TLCI : 96,6	R7 : 95,0	R14 : 99,0
u' : 0,2653	Y : 940,71	MEL : 485,2 lx	Rg : 99,6	PFD-UV : 0,0000 $\mu\text{molm}^{-2}\text{s}^{-1}$	R1 : 97,7	R8 : 93,5	R15 : 98,5
v' : 0,5269	Z : 297,56	LambdaPV : 22,50	GAI : 48,5	PFD-FR : 1,788 $\mu\text{molm}^{-2}\text{s}^{-1}$	R2 : 97,2	R9 : 88,0	

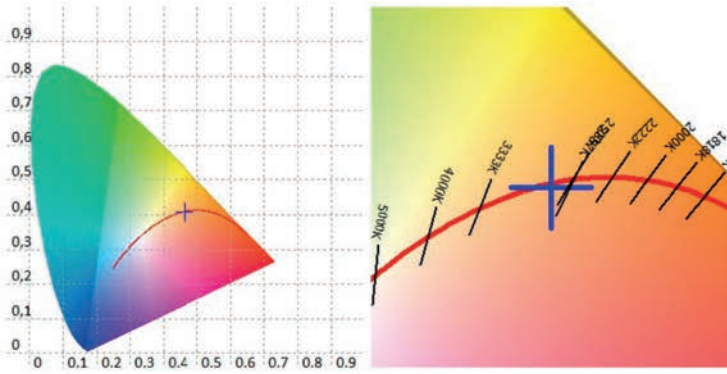
Spectrum



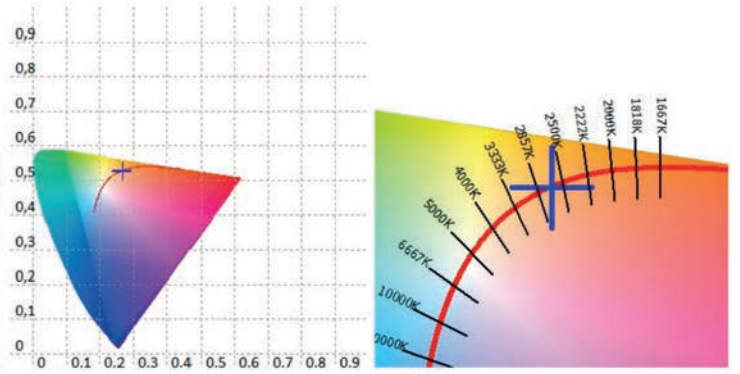
Otello 8 HD VariWhite +, Maximum Zoom, 2.700K

Measurements taken at 4.3 meters

CIE 1931



CIE 1976



CRI values, only R1-R8 are used to calculate final CRI

R1	R2	R3	R4	R5	R6	R7	R8	R9	R10	R11	R12	R13	R14	R15
97,7	97,2	98,4	97,7	96,8	92,9	95,0	93,5	88,0	94,8	94,0	88,6	96,9	99,0	98,5

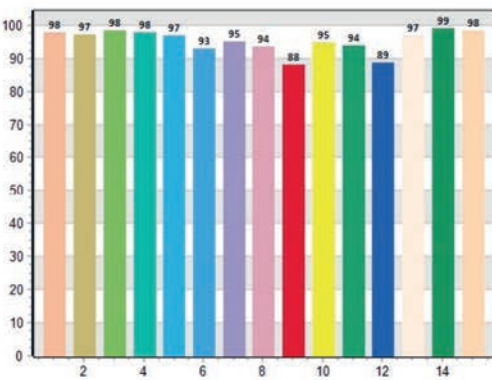
TM30 C values, 16 binned values out of total of 99 C values

C1	C2	C3	C4	C5	C6	C7	C8	C9	C10	C11	C12	C13	C14	C15	C16
94,7	97,2	95,8	91,8	95,5	95,9	94,6	95,2	93,3	93,6	94,1	89,7	90,1	90,7	92,2	90,3

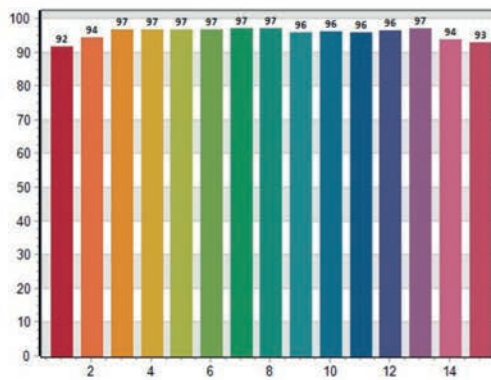
CQS Q values

Q1	Q2	Q3	Q4	Q5	Q6	Q7	Q8	Q9	Q10	Q11	Q12	Q13	Q14	Q15
91,6	94,3	96,7	96,8	96,7	96,6	96,9	97,0	95,8	96,1	95,9	96,5	96,9	93,7	93,0

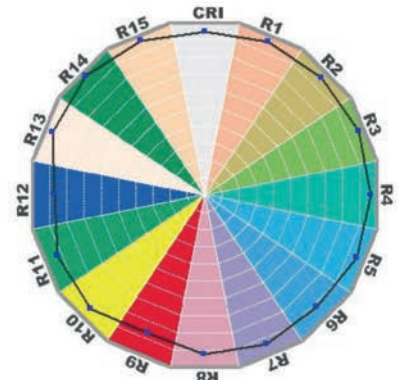
CRI: 96.15



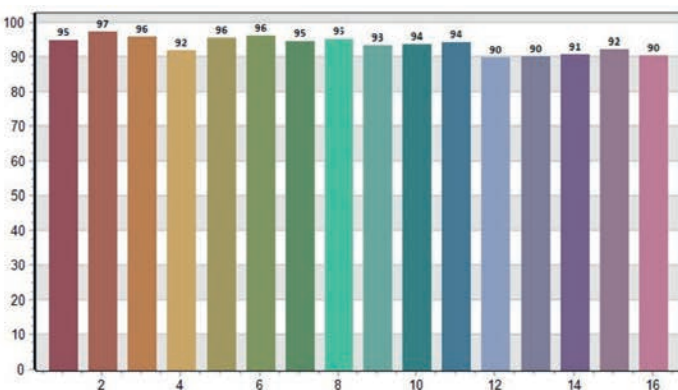
CQS: 94.99



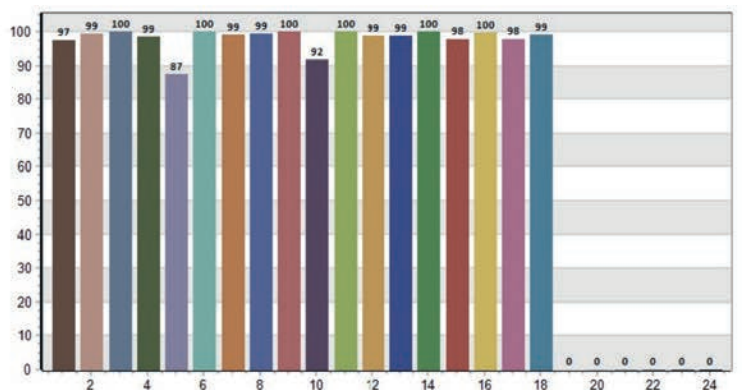
CRI-2



TM30: 94.27



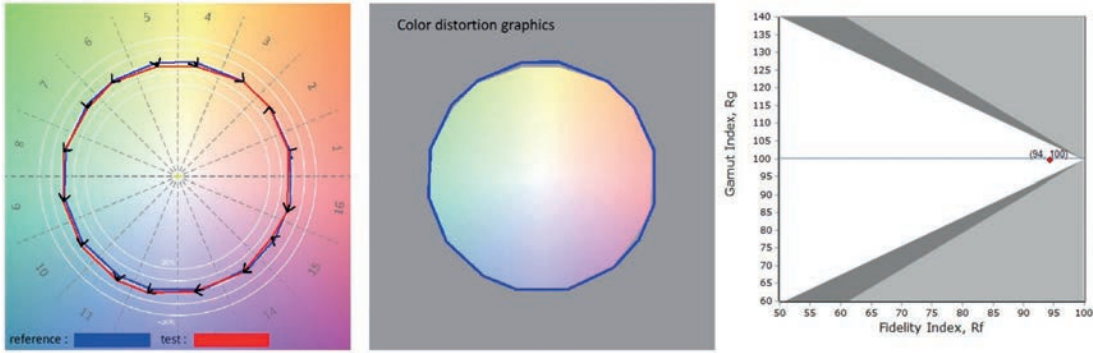
TLCI: 96.63



Otello 8 HD VariWhite +, Maximum Zoom, 2.700K

Measurements taken at 4.3 meters

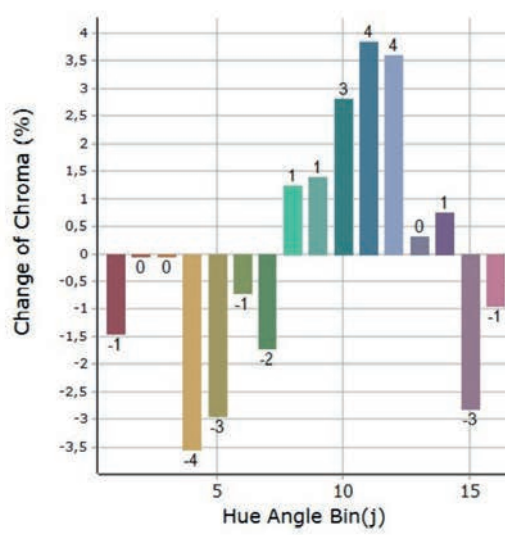
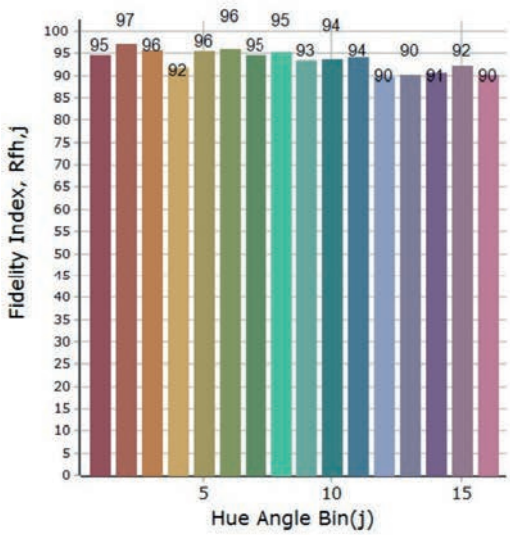
General Color Rendition



Rf 94,3
Fidelity index Rf

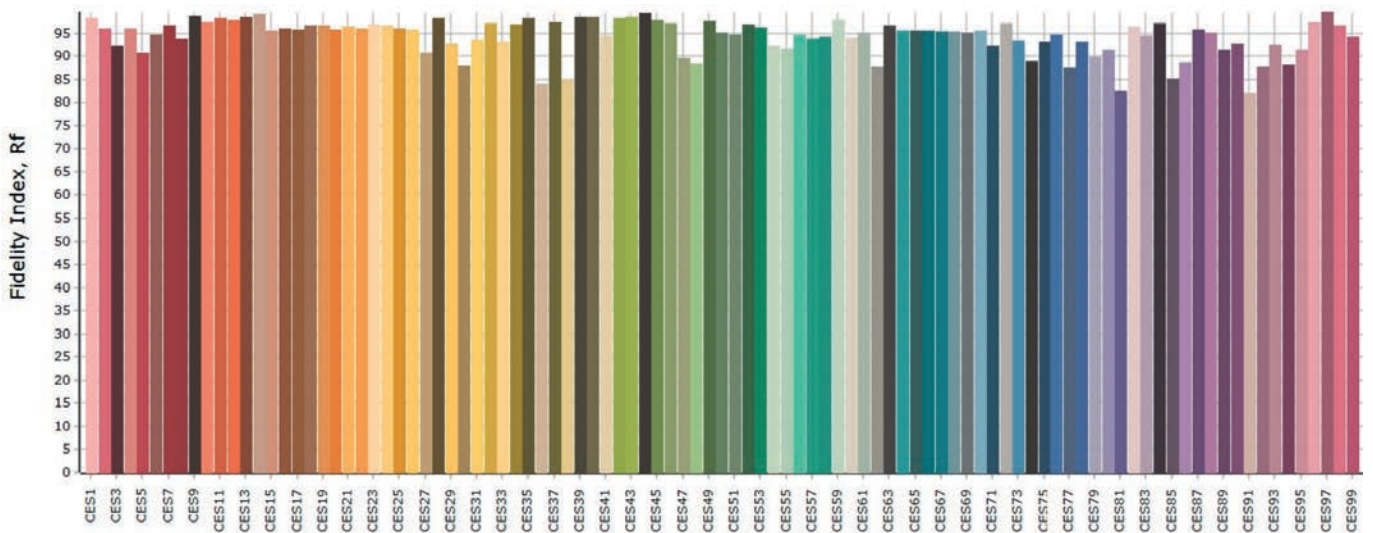
Rg 99,6
Gamut index Rg

Color Rendition by Hue



Hue Bin	Graphic shifts (%)		
	Rf	Chroma	Hue
1	94,7	-1,5%	1,1%
2	97,2	0,0%	0,0%
3	95,8	0,0%	-0,7%
4	91,9	-3,5%	-3,3%
5	95,6	-2,9%	-0,4%
6	96,0	-0,7%	2,2%
7	94,6	-1,7%	2,4%
8	95,2	1,3%	2,8%
9	93,4	1,4%	3,2%
10	93,6	2,8%	2,7%
11	94,1	3,8%	1,3%
12	89,7	3,6%	-3,7%
13	90,1	0,3%	-7,0%
14	90,7	0,7%	-6,7%
15	92,2	-2,8%	-0,3%
16	90,3	-0,9%	-7,1%

Color Fidelity by Sample



Otello 8 HD VariWhite +, Minimum Zoom, 3.200K

Measurements taken at 4.3 meters

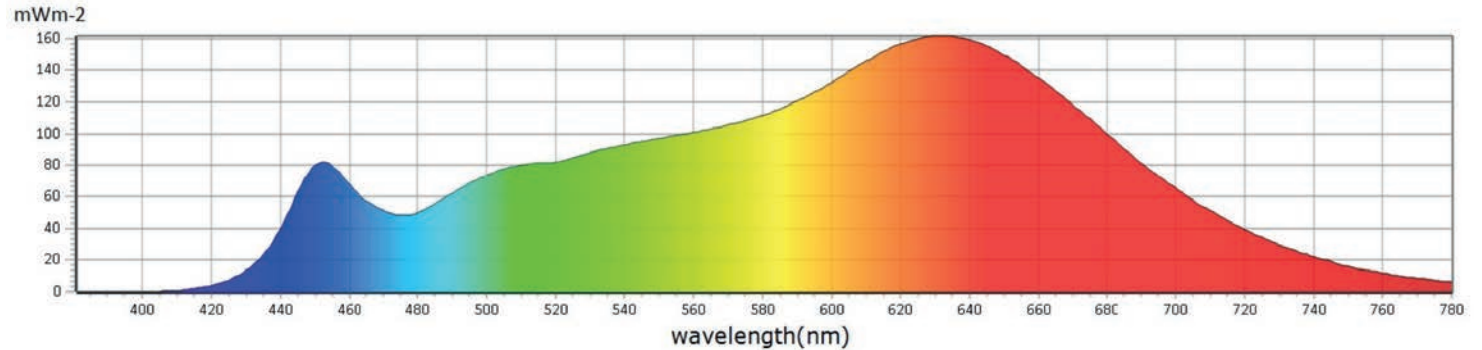
General

● CCT	3131 K
● x	0,4233
● y	0,3907
● LambdaD	584 nm
● LambdaP	632 nm

Measurements

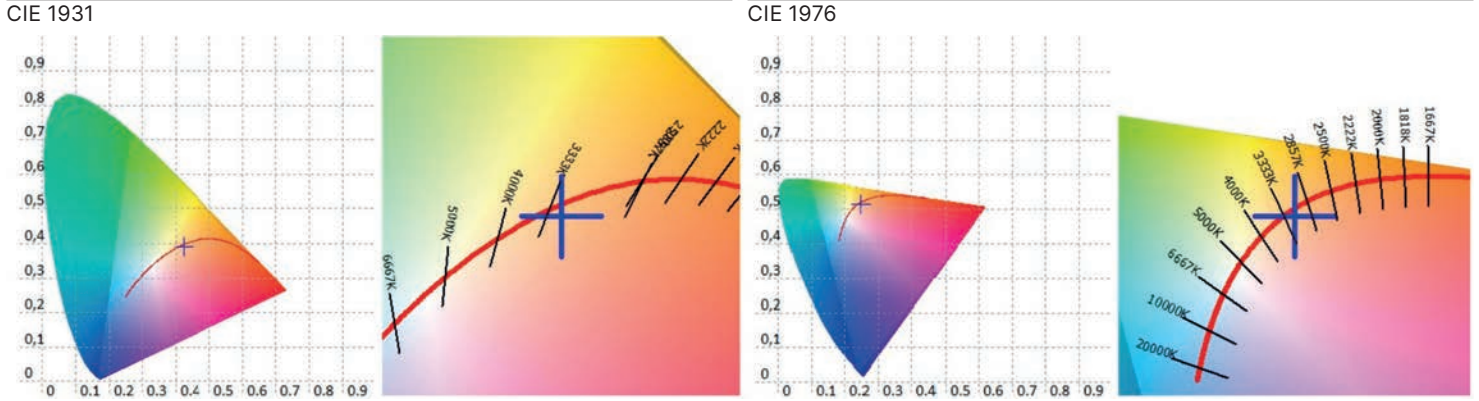
CCT : 3131 K	x10 : 0,4267	delta-x : -0,0046	LambdaD : 584 nm	PPFD : 132,1 $\mu\text{molm}^{-2}\text{s}^{-1}$	S/P : 1,58	R3 : 98,8	R10 : 93,1
LUX : 7721 lx	y10 : 0,3913	delta-y : -0,0100	LambdaP : 632 nm	PFD : 144,7 $\mu\text{molm}^{-2}\text{s}^{-1}$	IRR : 29,13	R4 : 96,2	R11 : 92,8
I-Time : 1600 us	u'10 : 0,2495	delta-u' : 0,0013	Purity : 44,19%	PFD-B : 16,07 $\mu\text{molm}^{-2}\text{s}^{-1}$	CQS : 96,8	R5 : 95,5	R12 : 88,7
x : 0,4233	v'10 : 0,5147	delta-v' : -0,0048	fc : 717,5	PFD-G : 45,79 $\mu\text{molm}^{-2}\text{s}^{-1}$	CRI : 96,4	R6 : 93,0	R13 : 95,3
y : 0,3907	X : 8363,87	Duv : -0,0034	Rf : 95,5	PFD-R : 70,24 $\mu\text{molm}^{-2}\text{s}^{-1}$	TLCI : 98,0	R7 : 97,0	R14 : 99,0
u' : 0,2475	Y : 7720,55	MEL : 4926 lx	Rg : 101,9	PFD-UV : 0,0025 $\mu\text{molm}^{-2}\text{s}^{-1}$	R1 : 95,9	R8 : 98,2	R15 : 97,1
v' : 0,5140	Z : 3674,80	LambdaPV : 161,9	GAI : 67,2	PFD-FR : 12,64 $\mu\text{molm}^{-2}\text{s}^{-1}$	R2 : 96,4	R9 : 97,7	

Spectrum



Otello 8 HD VariWhite +, Minimum Zoom, 3.200K

Measurements taken at 4.3 meters



CRI values, only R1-R8 are used to calculate final CRI

R1	R2	R3	R4	R5	R6	R7	R8	R9	R10	R11	R12	R13	R14	R15
95,9	96,4	98,8	96,2	95,5	93,0	97,0	98,2	97,7	93,1	92,8	88,7	95,3	99,0	97,1

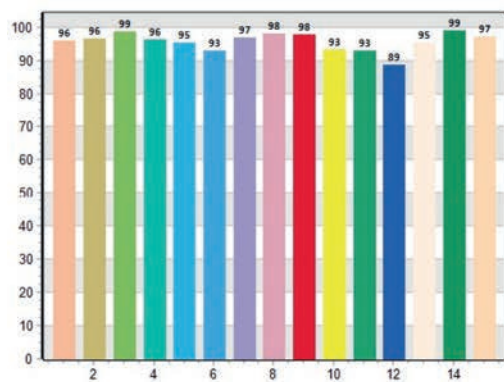
TM30 C values, 16 binned values out of total of 99 C values

C1	C2	C3	C4	C5	C6	C7	C8	C9	C10	C11	C12	C13	C14	C15	C16
96,5	97,4	95,8	96,1	95,3	97,0	94,3	96,5	95,0	95,2	94,4	91,2	93,3	92,4	92,8	90,6

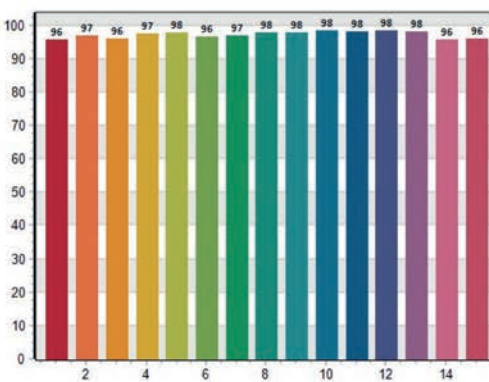
CQS Q values

Q1	Q2	Q3	Q4	Q5	Q6	Q7	Q8	Q9	Q10	Q11	Q12	Q13	Q14	Q15
95,6	96,9	95,8	97,4	97,8	96,4	96,7	97,7	97,8	98,3	98,0	98,3	97,9	95,6	96,0

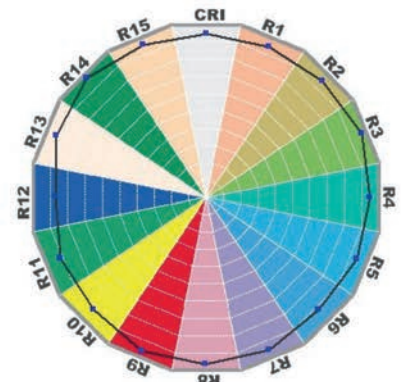
CRI: 96.38



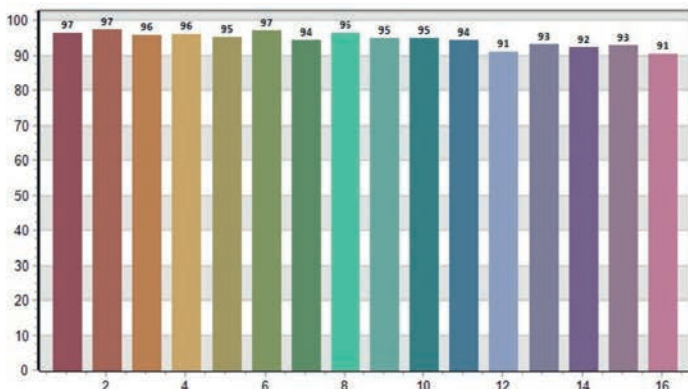
CQS: 96.80



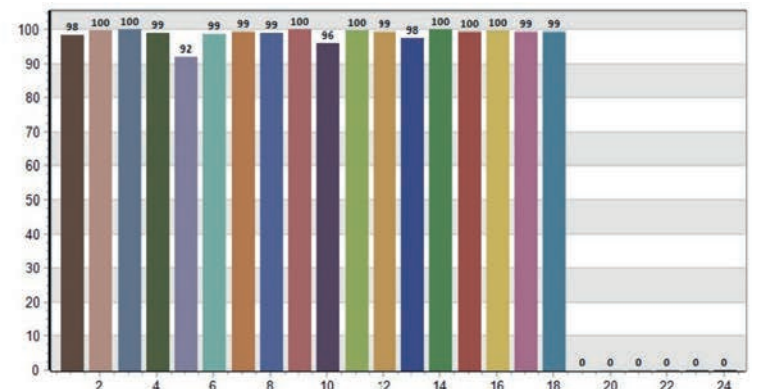
CRI-2



TM30: 95.51



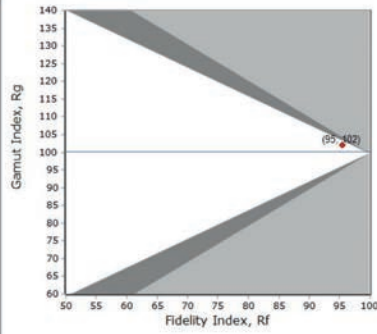
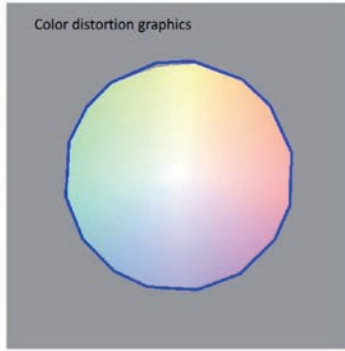
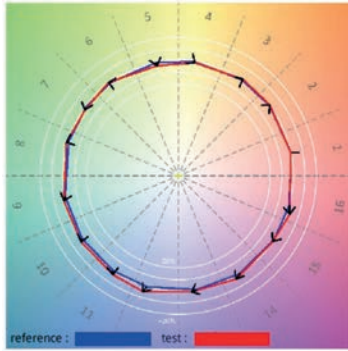
TLCI: 98.01



Otello 8 HD VariWhite +, Minimum Zoom, 3.200K

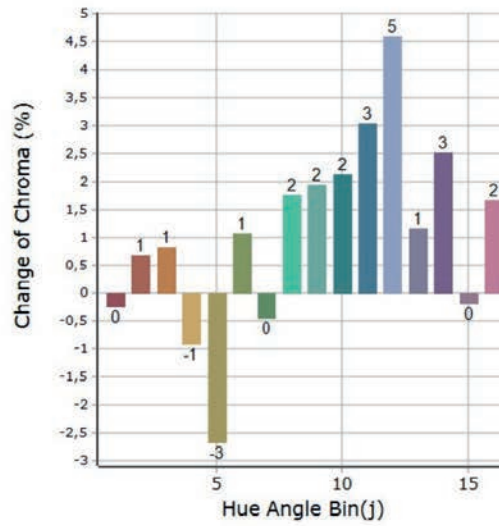
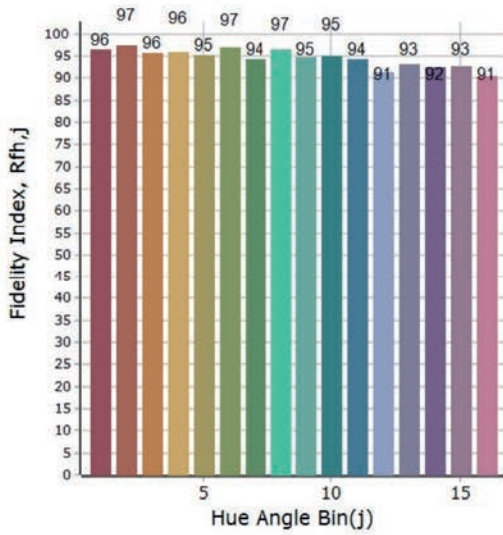
Measurements taken at 4.3 meters

General Color Rendition



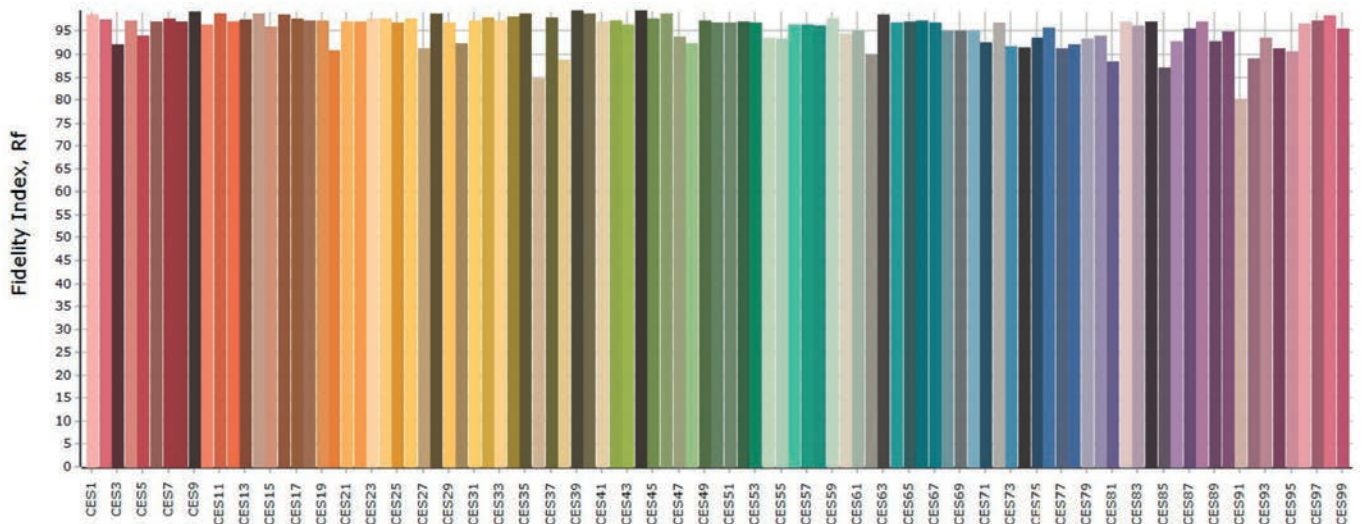
Rf 95,5 Fidelity index Rf
Rg 101,9 Gamut index Rg

Color Rendition by Hue



Hue Bin	Graphic shifts (%)		
	Rf	Chroma	Hue
1	96,4	-0,2%	0,5%
2	97,3	0,7%	-0,1%
3	95,8	0,8%	-0,1%
4	96,0	-0,9%	-1,7%
5	95,2	-2,7%	-0,2%
6	97,0	1,1%	1,0%
7	94,2	-0,4%	2,1%
8	96,5	1,7%	0,8%
9	94,9	1,9%	2,9%
10	95,0	2,1%	1,6%
11	94,3	3,0%	1,6%
12	91,1	4,6%	-2,6%
13	93,2	1,2%	-4,6%
14	92,4	2,5%	-4,7%
15	92,7	-0,2%	-1,9%
16	90,6	1,7%	-7,4%

Color Fidelity by Sample



Otello 8 HD VariWhite +, Maximum Zoom, 3.200K

Measurements taken at 4.3 meters

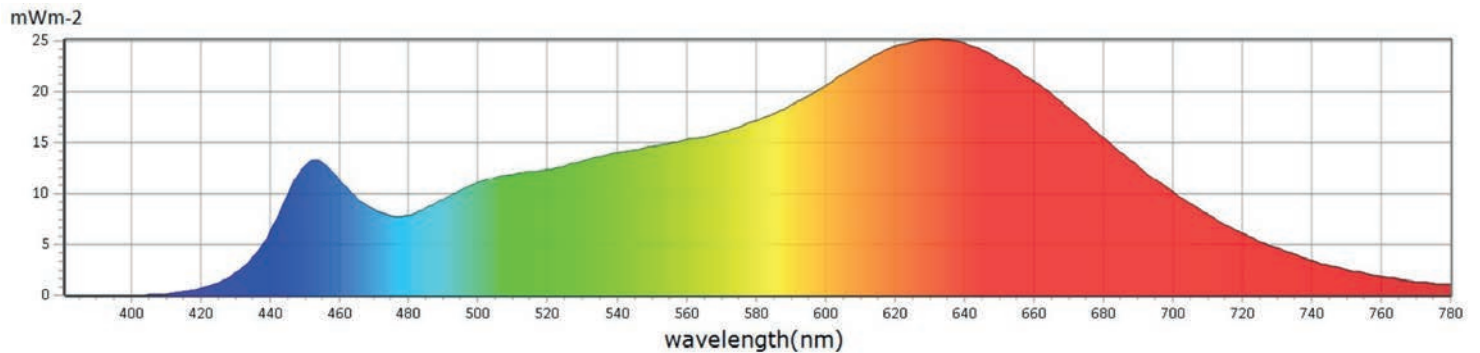
General

● CCT	3092 K
● x	0,4228
● y	0,3852
● LambdaD	585 nm
● LambdaP	631 nm

Measurements

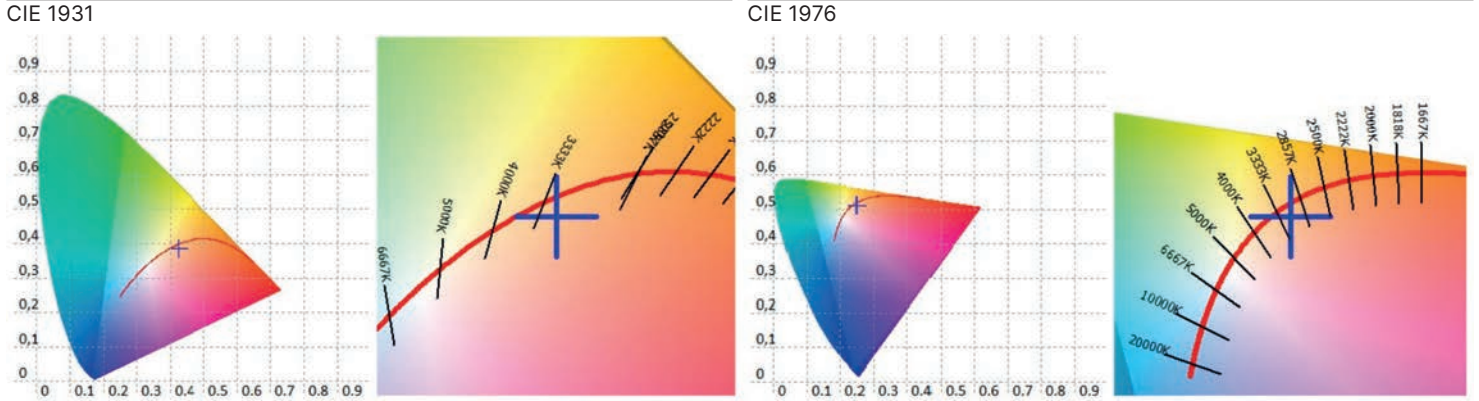
CCT : 3092 K	x10 : 0,4258	delta-x : -0,0077	LambdaD : 585 nm	PPFD : 20,44 $\mu\text{molm}^{-2}\text{s}^{-1}$	S/P : 1,59	R3 : 97,6	R10 : 90,4
LUX : 1182 lx	y10 : 0,3860	delta-y : -0,0166	LambdaP : 631 nm	PFD : 22,42 $\mu\text{molm}^{-2}\text{s}^{-1}$	IRR : 4,512	R4 : 95,8	R11 : 92,1
I-Time : 10800 us	u'10 : 0,2512	delta-u' : 0,0022	Purity : 42,46%	PFD-B : 2,554 $\mu\text{molm}^{-2}\text{s}^{-1}$	CQS : 96,3	R5 : 94,2	R12 : 86,2
x : 0,4228	v'10 : 0,5124	delta-v' : -0,0079	fc : 109,8	PFD-G : 6,963 $\mu\text{molm}^{-2}\text{s}^{-1}$	CRI : 95,3	R6 : 91,0	R13 : 94,0
y : 0,3852	X : 1297,03	Duv : -0,0057	Rf : 95,3	PFD-R : 10,93 $\mu\text{molm}^{-2}\text{s}^{-1}$	TLCI : 97,6	R7 : 96,0	R14 : 99,0
u' : 0,2496	Y : 1181,62	MEL : 760,2 lx	Rg : 102,7	PFD-UV : 0,0004 $\mu\text{molm}^{-2}\text{s}^{-1}$	R1 : 94,9	R8 : 98,0	R15 : 95,9
v' : 0,5116	Z : 588,75	LambdaPV : 25,20	GAI : 70,0	PFD-FR : 1,974 $\mu\text{molm}^{-2}\text{s}^{-1}$	R2 : 95,1	R9 : 97,7	

Spectrum



Otello 8 HD VariWhite +, Maximum Zoom, 3.200K

Measurements taken at 4.3 meters



CRI values, only R1-R8 are used to calculate final CRI

R1	R2	R3	R4	R5	R6	R7	R8	R9	R10	R11	R12	R13	R14	R15
94,9	95,1	97,6	95,8	94,2	91,0	96,0	98,0	97,7	90,4	92,1	86,2	94,0	99,0	95,9

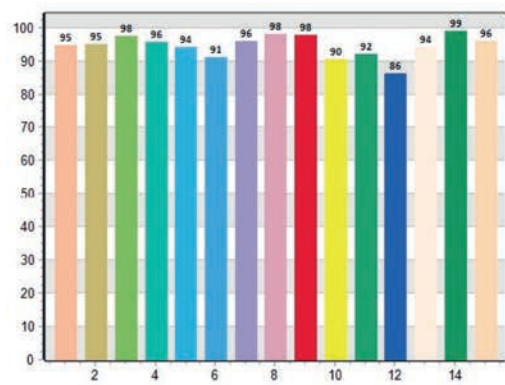
TM30 C values, 16 binned values out of total of 99 C values

C1	C2	C3	C4	C5	C6	C7	C8	C9	C10	C11	C12	C13	C14	C15	C16
96,3	96,9	95,3	96,6	95,0	95,8	94,1	96,2	94,9	95,0	94,1	90,7	92,9	92,1	92,8	90,4

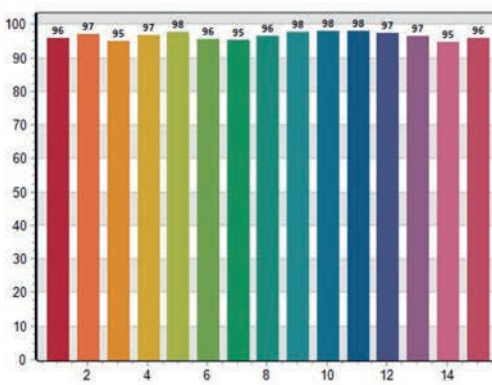
CQS Q values

Q1	Q2	Q3	Q4	Q5	Q6	Q7	Q8	Q9	Q10	Q11	Q12	Q13	Q14	Q15
96,1	97,0	95,0	96,8	97,7	95,6	95,2	96,5	97,6	98,0	98,0	97,4	96,5	94,6	95,9

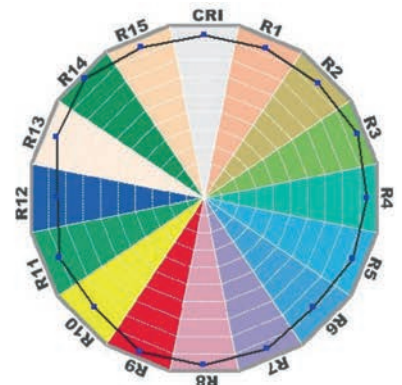
CRI: 95.32



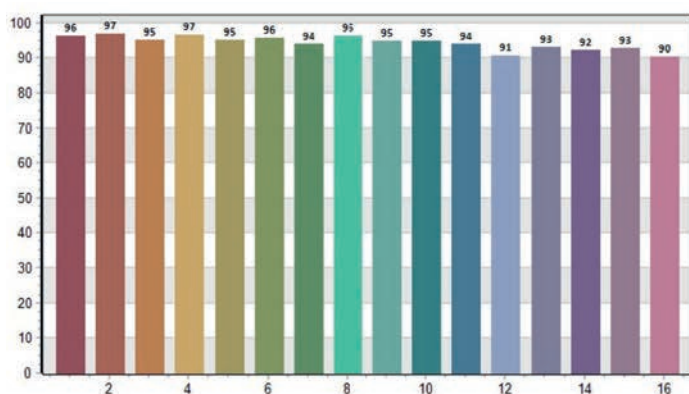
CQS: 96.26



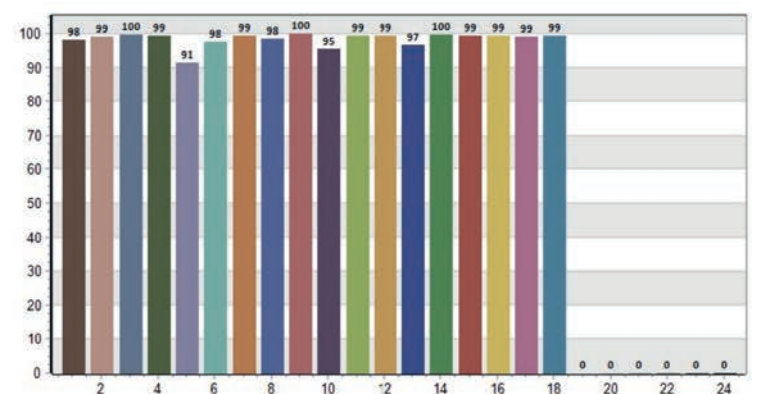
CRI-2



TM30: 95.30



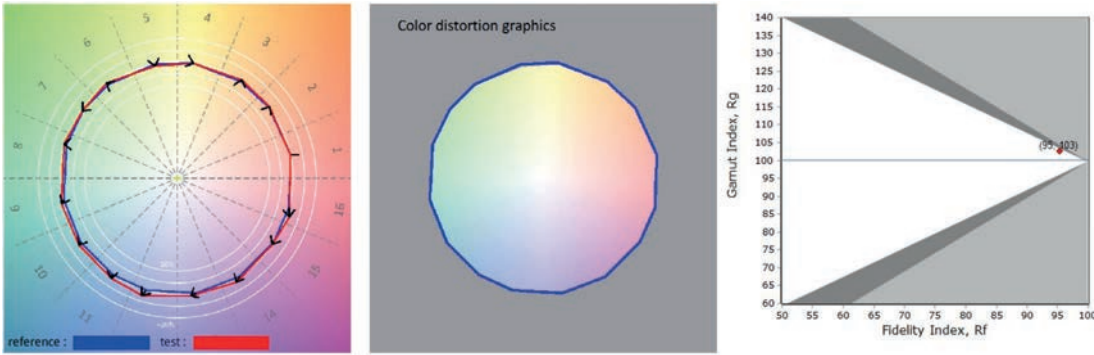
TLCI: 97.64



Otello 8 HD VariWhite +, Maximum Zoom, 3.200K

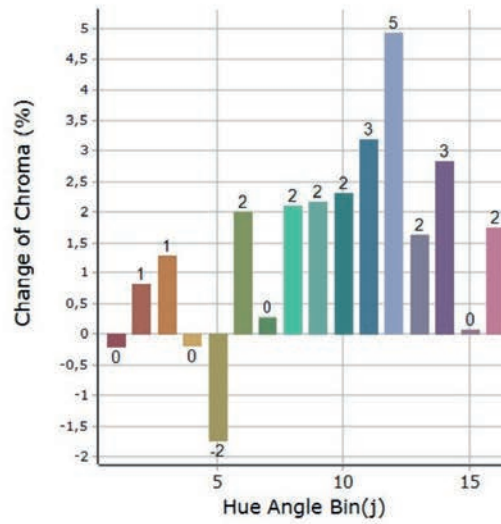
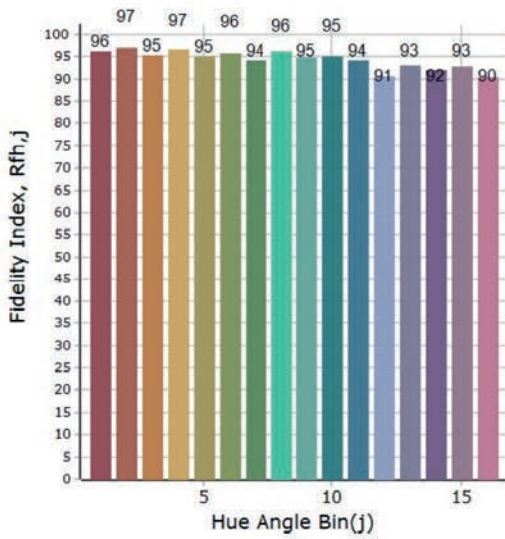
Measurements taken at 4.3 meters

General Color Rendition



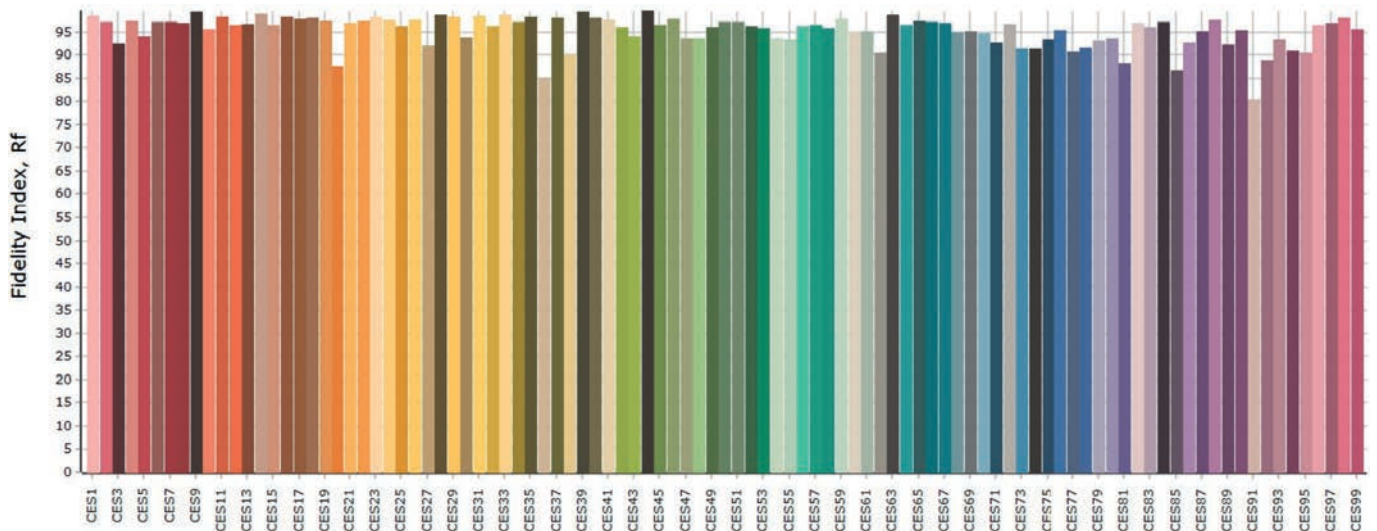
Rf 95,3 Fidelity index Rf
Rg 102,8 Gammut index Rg

Color Rendition by Hue



Hue Bin	Rf	Graphic shifts (%)	
		Chroma	Hue
1	96,3	-0,2%	0,5%
2	96,9	0,8%	0,3%
3	95,3	1,3%	0,5%
4	96,6	-0,2%	-1,3%
5	95,0	-1,7%	0,0%
6	95,8	2,0%	0,7%
7	94,1	0,3%	1,5%
8	96,2	2,1%	0,1%
9	94,8	2,2%	2,5%
10	95,0	2,3%	1,3%
11	94,1	3,2%	1,5%
12	90,7	4,9%	-2,6%
13	92,9	1,6%	-4,7%
14	92,0	2,8%	-4,8%
15	92,8	0,1%	-2,1%
16	90,4	1,7%	-7,6%

Color Fidelity by Sample



Otello 8 HD VariWhite +, Minimum Zoom, 4.000K

Measurements taken at 4.3 meters

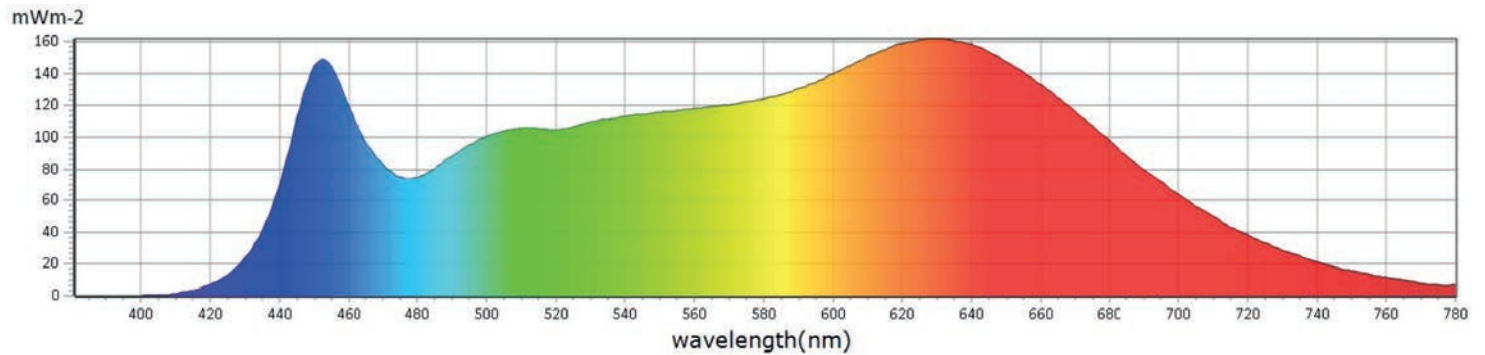
General

● CCT	3858 K
● x	0,3820
● y	0,3646
● LambdaD	584 nm
● LambdaP	627 nm

Measurements

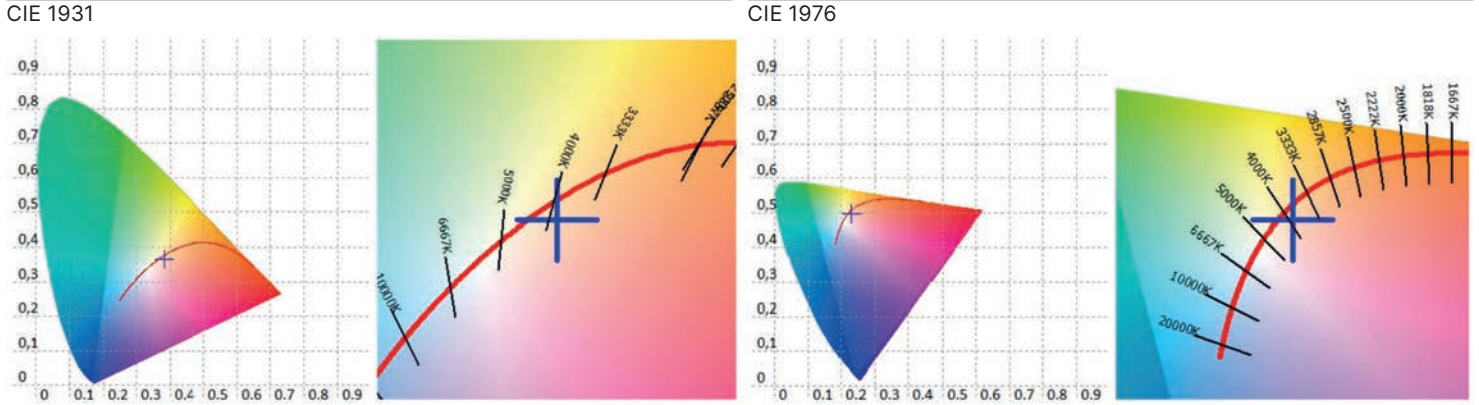
CCT : 3858 K	x10 : 0,3845	delta-x : -0,0049	LambdaD : 584 nm	PPFD : 150,0 $\mu\text{molm}^{-2}\text{s}^{-1}$	S/P : 1,88	R3 : 98,6	R10 : 90,1
LUX : 8857 lx	y10 : 0,3667	delta-y : -0,0161	LambdaP : 627 nm	PFD : 162,3 $\mu\text{molm}^{-2}\text{s}^{-1}$	IRR : 33,43	R4 : 95,2	R11 : 92,1
I-Time : 1400 us	u'10 : 0,2319	delta-u' : 0,0034	Purity : 23,96%	PFD-B : 26,11 $\mu\text{molm}^{-2}\text{s}^{-1}$	CQS : 97,6	R5 : 93,7	R12 : 84,9
x : 0,3820	v'10 : 0,4977	delta-v' : -0,0079	fc : 823,2	PFD-G : 53,83 $\mu\text{molm}^{-2}\text{s}^{-1}$	CRI : 95,3	R6 : 92,0	R13 : 93,1
y : 0,3646	X : 9281,94	Duv : -0,0063	Rf : 94,6	PFD-R : 70,03 $\mu\text{molm}^{-2}\text{s}^{-1}$	TLCI : 98,3	R7 : 97,8	R14 : 98,6
u' : 0,2312	Y : 8857,30	MEL : 7034 lx	Rg : 102,5	PFD-UV : 0,0047 $\mu\text{molm}^{-2}\text{s}^{-1}$	R1 : 93,5	R8 : 96,8	R15 : 92,7
v' : 0,4963	Z : 6156,13	LambdaPV : 162,0	GAI : 85,5	PFD-FR : 12,30 $\mu\text{molm}^{-2}\text{s}^{-1}$	R2 : 94,8	R9 : 89,1	

Spectrum



Otello 8 HD VariWhite +, Minimum Zoom, 4.000K

Measurements taken at 4.3 meters



CRI values, only R1-R8 are used to calculate final CRI

R1	R2	R3	R4	R5	R6	R7	R8	R9	R10	R11	R12	R13	R14	R15
93,5	94,8	98,6	95,2	93,7	92,0	97,8	96,8	89,1	90,1	92,1	84,9	93,1	98,6	92,7

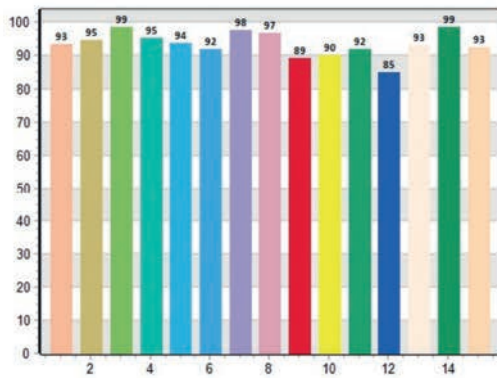
TM30 C values, 16 binned values out of total of 99 C values

C1	C2	C3	C4	C5	C6	C7	C8	C9	C10	C11	C12	C13	C14	C15	C16
95,3	95,6	95,7	94,8	94,4	96,8	95,0	93,1	92,2	94,7	91,3	91,7	95,3	91,9	92,1	90,5

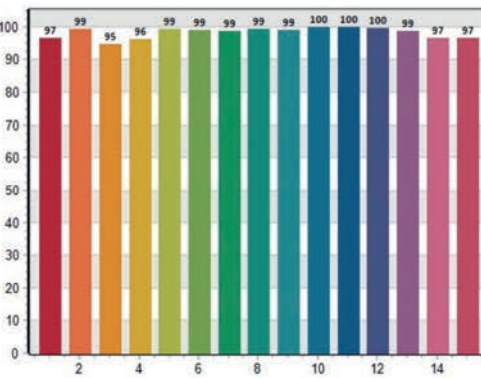
CQS Q values

Q1	Q2	Q3	Q4	Q5	Q6	Q7	Q8	Q9	Q10	Q11	Q12	Q13	Q14	Q15
96,7	99,3	94,6	96,2	99,2	98,9	98,9	99,5	99,1	99,9	100,0	99,6	98,8	96,6	96,6

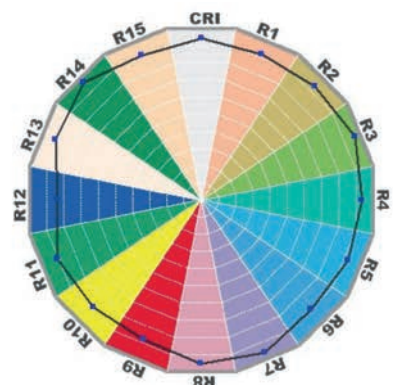
CRI: 95.31



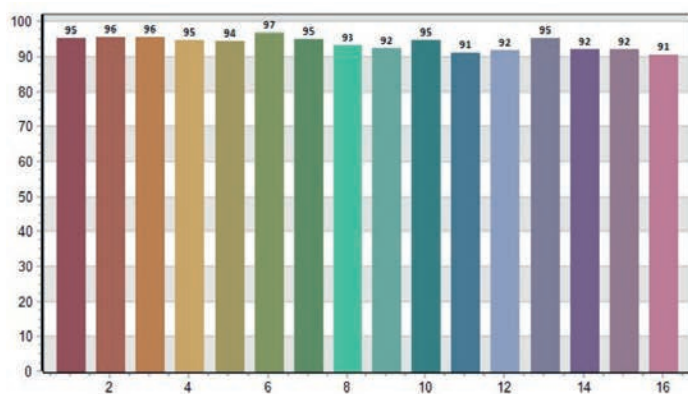
CQS: 97.64



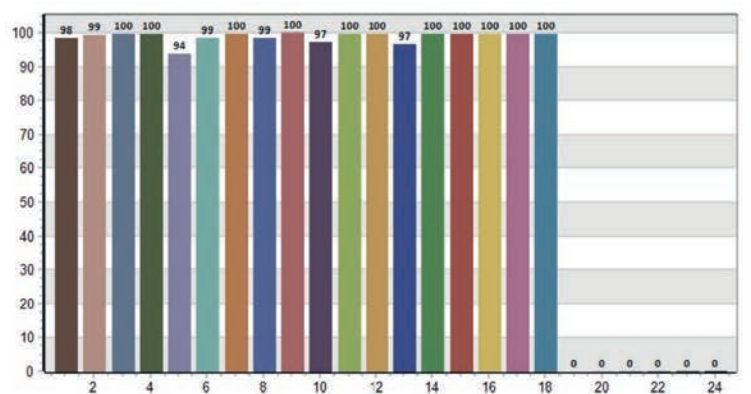
CRI-2



TM30: 91.77



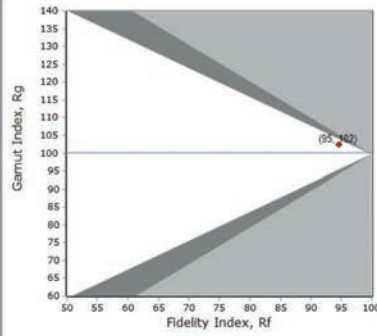
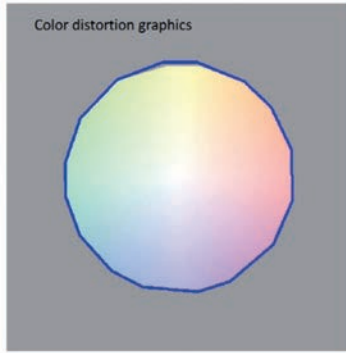
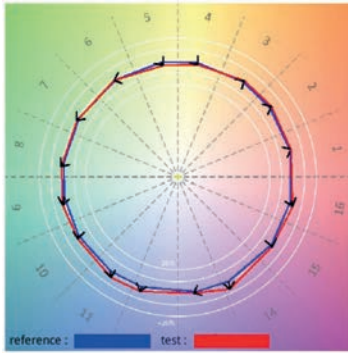
TLCI: 95.35



Otello 8 HD VariWhite +, Minimum Zoom, 4.000K

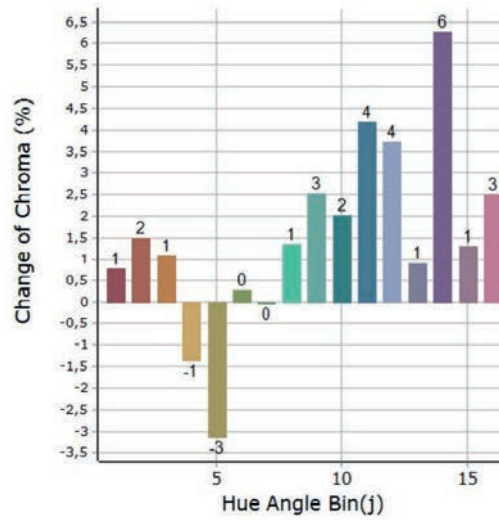
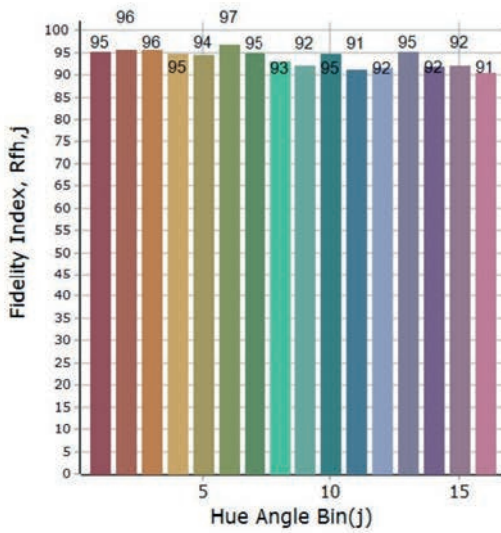
Measurements taken at 4.3 meters

General Color Rendition



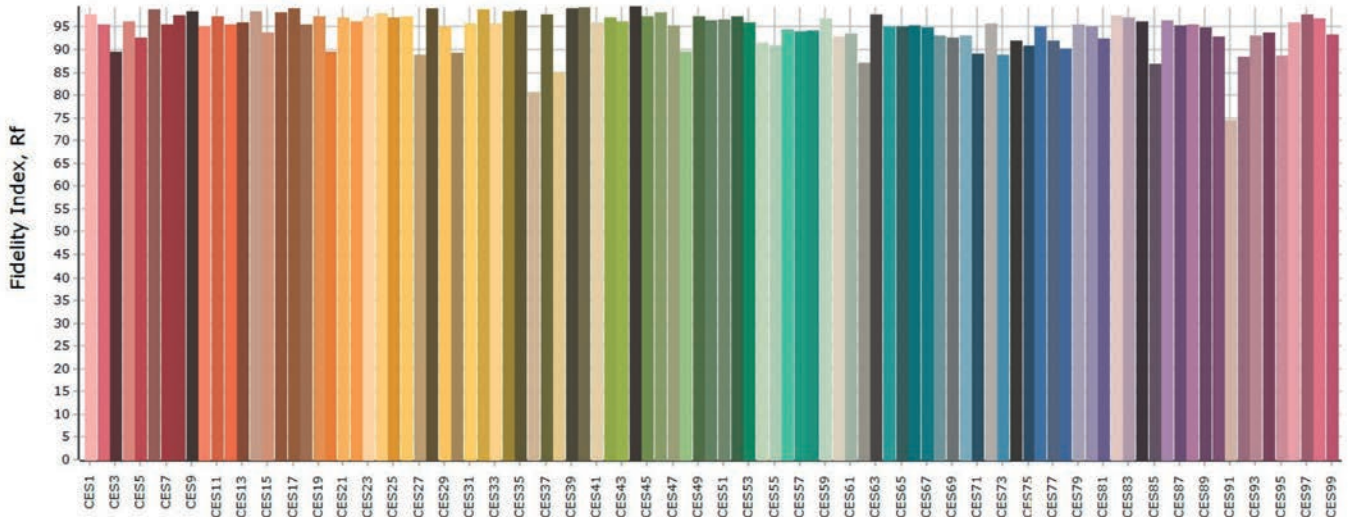
Rf 94,6 Fidelity index Rf
Rg 102,4 Gammut index Rg

Color Rendition by Hue



Hue Bin	Rf	Graphic shifts (%)	
		Chroma	Hue
1	95,3	0,8%	0,5%
2	95,5	1,5%	-0,3%
3	95,7	1,1%	-0,5%
4	94,7	-1,3%	-2,1%
5	94,4	-3,1%	-1,3%
6	96,8	0,3%	1,2%
7	95,0	0,0%	2,5%
8	93,0	1,4%	2,8%
9	92,1	2,5%	6,4%
10	94,6	2,0%	2,3%
11	91,3	4,2%	3,5%
12	91,7	3,7%	-0,2%
13	95,2	0,9%	-2,7%
14	91,9	6,3%	-3,0%
15	92,1	1,3%	-1,2%
16	90,5	2,5%	-4,4%

Color Fidelity by Sample



Otello 8 HD VariWhite +, Maximum Zoom, 4.000K

Measurements taken at 4.3 meters

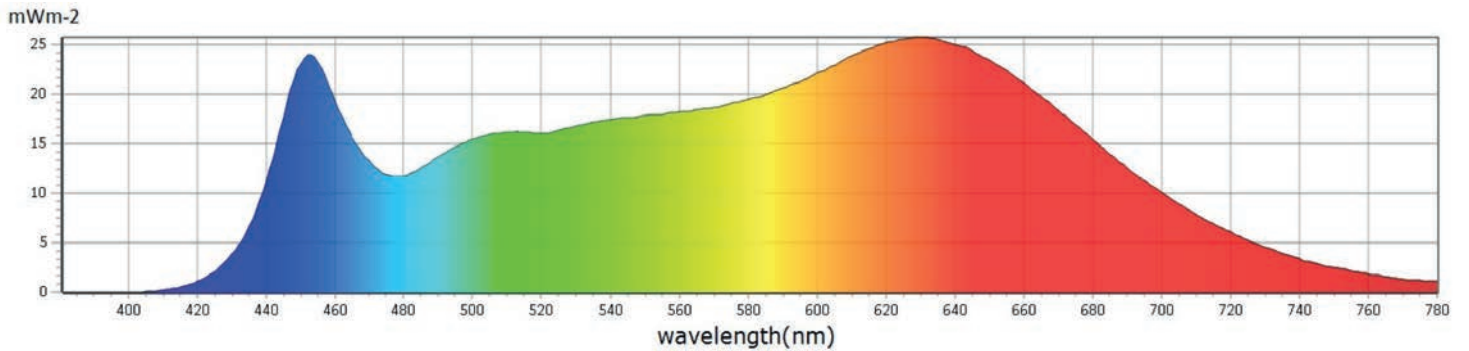
General

● CCT	3815 K
● x	0,3825
● y	0,3609
● LambdaD	585 nm
● LambdaP	628 nm

Measurements

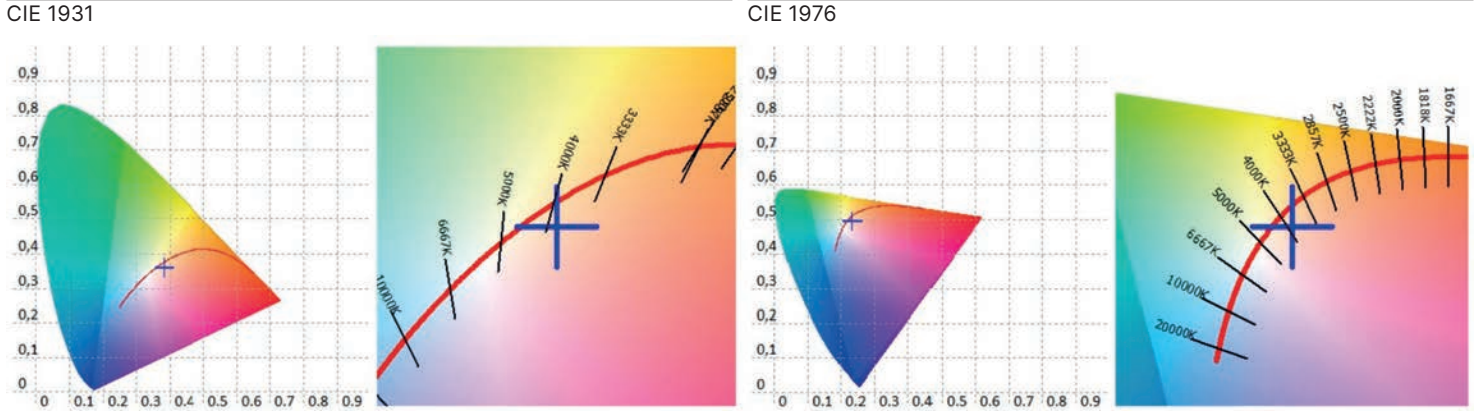
CCT : 3815 K	x10 : 0,3846	delta-x : -0,0065	LambdaD : 585 nm	PPFD : 23,59 $\mu\text{mol}\cdot\text{m}^{-2}\cdot\text{s}^{-1}$	S/P : 1,88	R3 : 97,9	R10 : 87,9
LUX : 1381 lx	y10 : 0,3631	delta-y : -0,0210	LambdaP : 628 nm	PFD : 25,54 $\mu\text{mol}\cdot\text{m}^{-2}\cdot\text{s}^{-1}$	IRR : 5,260	R4 : 94,5	R11 : 91,1
I-Time : 8400 us	u'10 : 0,2335	delta-u' : 0,0044	Purity : 23,13%	PFD-B : 4,143 $\mu\text{mol}\cdot\text{m}^{-2}\cdot\text{s}^{-1}$	CQS : 97,4	R5 : 92,5	R12 : 83,9
x : 0,3825	v'10 : 0,4960	delta-v' : -0,0104	fc : 128,4	PFD-G : 8,354 $\mu\text{mol}\cdot\text{m}^{-2}\cdot\text{s}^{-1}$	CRI : 94,4	R6 : 90,5	R13 : 91,8
y : 0,3609	X : 1463,74	Duv : -0,0082	Rf : 94,5	PFD-R : 11,09 $\mu\text{mol}\cdot\text{m}^{-2}\cdot\text{s}^{-1}$	TLCI : 98,1	R7 : 97,3	R14 : 98,6
u' : 0,2330	Y : 1381,11	MEL : 1100 lx	Rg : 103,0	PFD-UV : 0,0003 $\mu\text{mol}\cdot\text{m}^{-2}\cdot\text{s}^{-1}$	R1 : 92,4	R8 : 96,3	R15 : 91,3
v' : 0,4947	Z : 982,07	LambdaPV : 25,73	GAI : 87,3	PFD-FR : 1,951 $\mu\text{mol}\cdot\text{m}^{-2}\cdot\text{s}^{-1}$	R2 : 93,7	R9 : 87,1	

Spectrum



Otello 8 HD VariWhite +, Maximum Zoom, 4.000K

Measurements taken at 4.3 meters



CRI values, only R1-R8 are used to calculate final CRI

R1	R2	R3	R4	R5	R6	R7	R8	R9	R10	R11	R12	R13	R14	R15
92,4	93,7	97,9	94,5	92,5	90,5	97,3	96,3	87,1	87,9	91,1	83,9	91,8	98,6	91,3

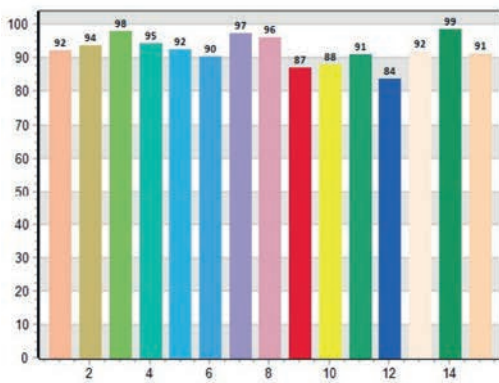
TM30 C values, 16 binned values out of total of 99 C values

C1	C2	C3	C4	C5	C6	C7	C8	C9	C10	C11	C12	C13	C14	C15	C16
95,0	95,1	95,4	95,1	94,5	96,3	94,9	92,6	92,1	94,8	91,2	91,4	95,1	92,9	92,1	90,4

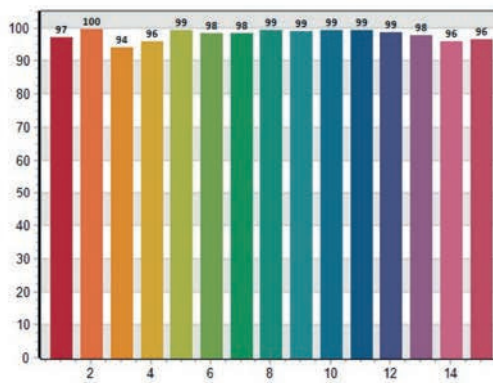
CQS Q values

Q1	Q2	Q3	Q4	Q5	Q6	Q7	Q8	Q9	Q10	Q11	Q12	Q13	Q14	Q15
97,2	99,6	94,1	96,0	99,3	98,4	98,4	99,3	98,9	99,4	99,4	98,8	97,9	96,0	96,4

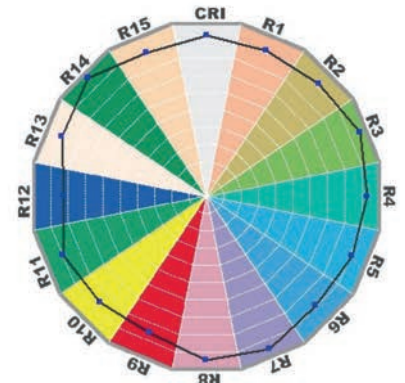
CRI: 94.39



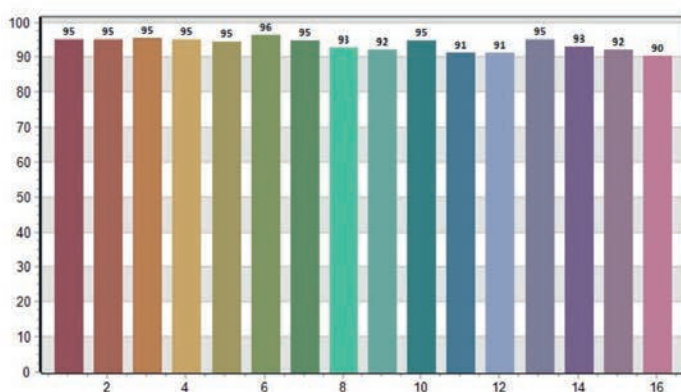
CQS: 97.40



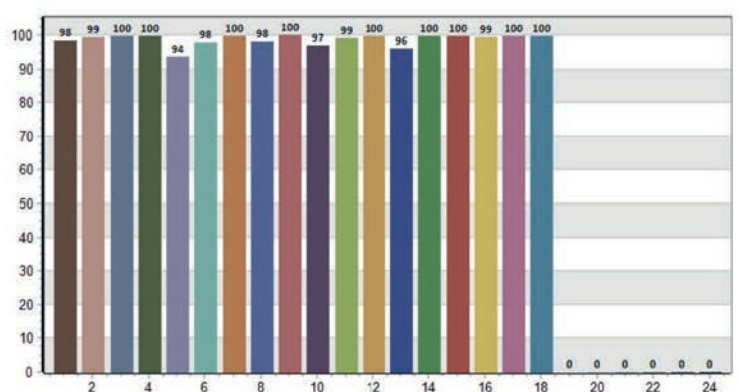
CRI-2



TM30: 94.48



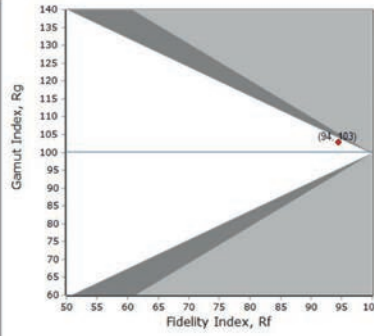
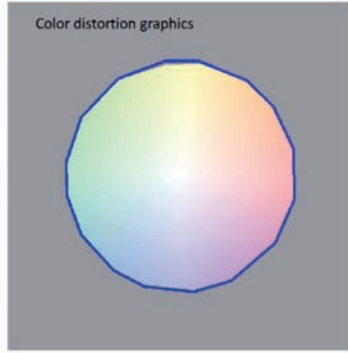
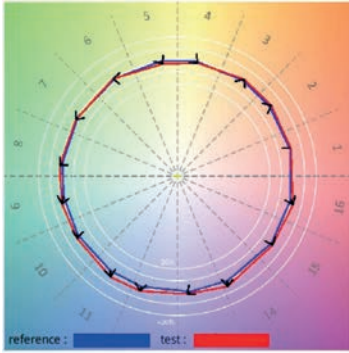
TLCI: 98.11



Otello 8 HD VariWhite +, Maximum Zoom, 4.000K

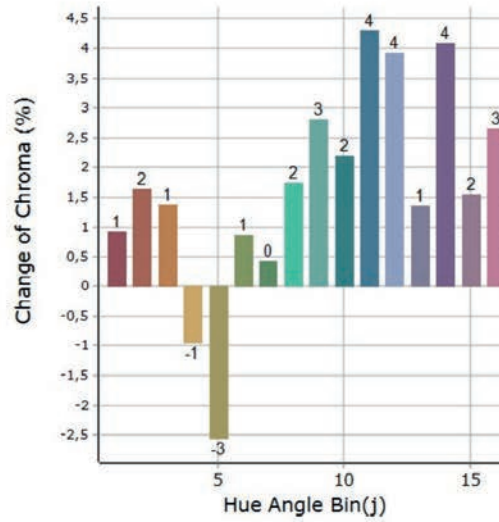
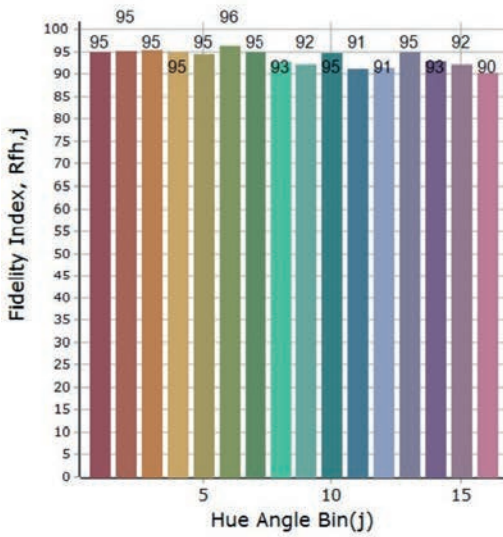
Measurements taken at 4.3 meters

General Color Rendition



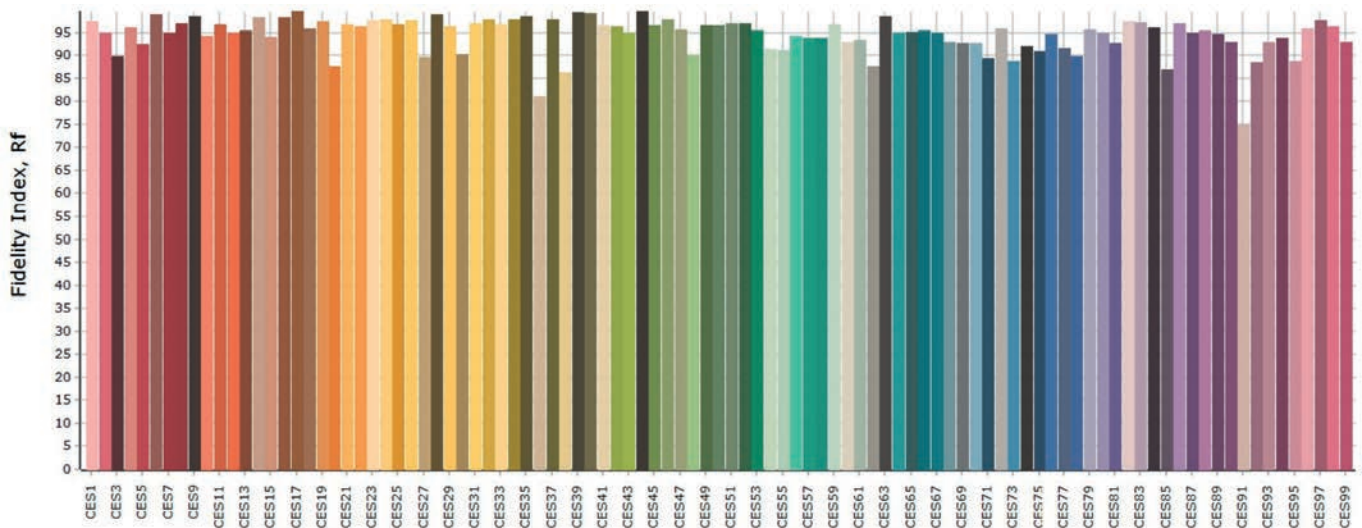
Rf 94,5 Fidelity index Rf
Rg 103,0 Gamut index Rg

Color Rendition by Hue



Hue Bin	Rf	Graphic shifts (%)	
		Chroma	Hue
1	95,0	0,9%	0,6%
2	95,1	1,6%	0,0%
3	95,5	1,4%	-0,2%
4	95,1	-0,9%	-1,9%
5	94,5	-2,5%	-1,1%
6	96,3	0,9%	1,2%
7	94,9	0,4%	2,3%
8	92,6	1,7%	2,7%
9	92,1	2,8%	6,0%
10	94,7	2,2%	2,0%
11	91,2	4,3%	3,4%
12	91,4	3,9%	-0,2%
13	95,0	1,4%	-2,9%
14	92,9	4,1%	-2,5%
15	92,1	1,5%	-1,1%
16	90,4	2,7%	-4,3%

Color Fidelity by Sample



Otello 8 HD VariWhite +, Minimum Zoom, 5.600K

Measurements taken at 4.3 meters

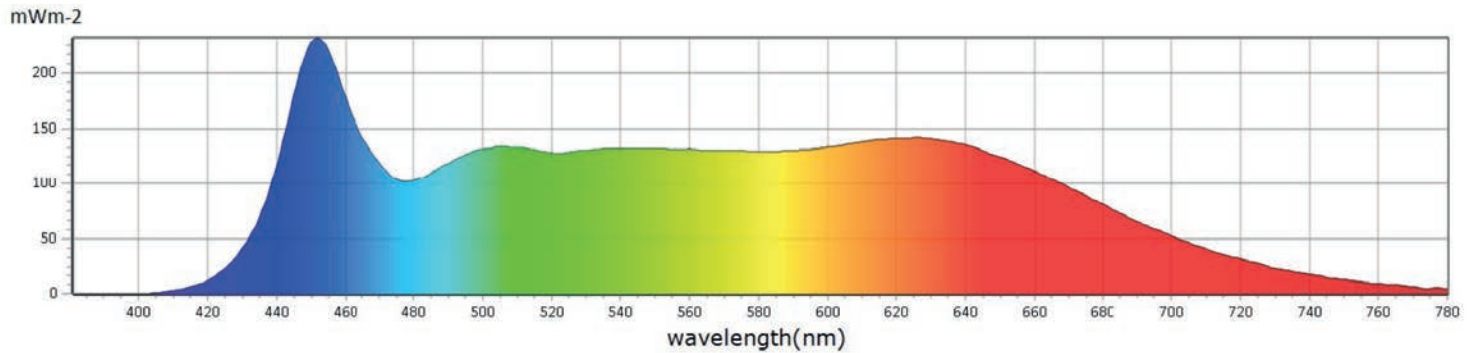
General

● CCT	5306 K
● x	0,3367
● y	0,3372
● LambdaD	576 nm
● LambdaP	451 nm

Measurements

CCT : 5306 K	x10 : 0,3389	delta-x : -0,0004	LambdaD : 576 nm	PPFD : 159,1 $\mu\text{molm}^{-2}\text{s}^{-1}$	S/P : 2,24	R3 : 98,6	R10 : 93,3
LUX : 9581 lx	y10 : 0,3410	delta-y : -0,0078	LambdaP : 451 nm	PFD : 169,1 $\mu\text{molm}^{-2}\text{s}^{-1}$	IRR : 35,95	R4 : 95,7	R11 : 93,0
I-Time : 830 us	u'10 : 0,2113	delta-u' : 0,0028	Purity : 2,16%	PFD-B : 38,52 $\mu\text{molm}^{-2}\text{s}^{-1}$	CQS : 96,6	R5 : 95,1	R12 : 85,3
x : 0,3367	v'10 : 0,4785	delta-v' : -0,0040	fc : 890,4	PFD-G : 60,22 $\mu\text{molm}^{-2}\text{s}^{-1}$	CRI : 96,2	R6 : 93,7	R13 : 94,4
y : 0,3372	X : 9567,88	Duv : -0,0039	Rf : 94,7	PFD-R : 60,33 $\mu\text{molm}^{-2}\text{s}^{-1}$	TLCI : 98,9	R7 : 98,5	R14 : 98,4
u' : 0,2113	Y : 9581,21	MEL : 9445 lx	Rg : 102,4	PFD-UV : 0,0085 $\mu\text{molm}^{-2}\text{s}^{-1}$	R1 : 94,5	R8 : 97,3	R15 : 93,4
v' : 0,4762	Z : 9268,07	LambdaPV : 232,2	GAI : 97,5	PFD-FR : 10,05 $\mu\text{molm}^{-2}\text{s}^{-1}$	R2 : 96,1	R9 : 89,8	

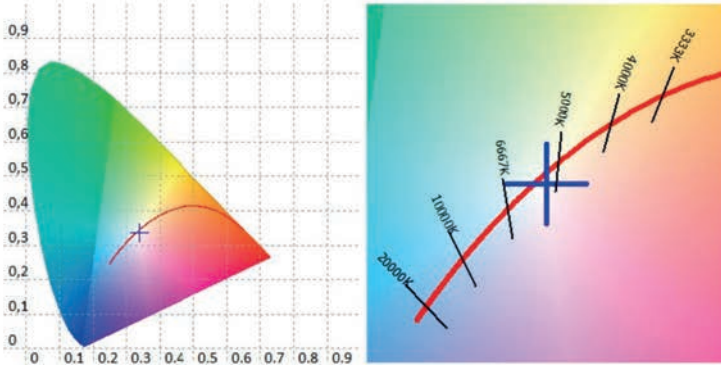
Spectrum



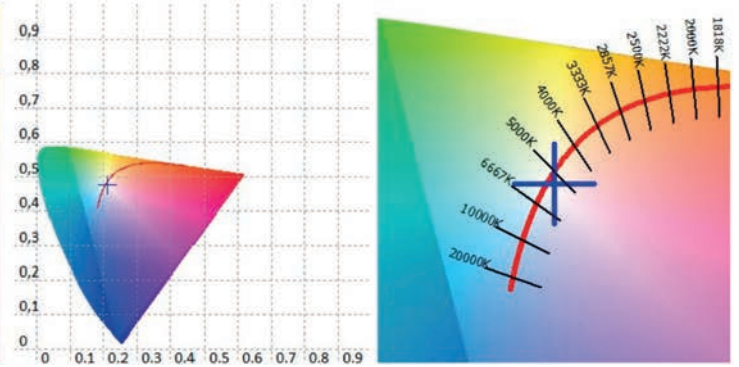
Otello 8 HD VariWhite +, Minimum Zoom, 5.600K

Measurements taken at 4.3 meters

CIE 1931



CIE 1976



CRI values, only R1-R8 are used to calculate final CRI

R1	R2	R3	R4	R5	R6	R7	R8	R9	R10	R11	R12	R13	R14	R15
94,5	96,1	98,6	95,7	95,1	93,7	98,5	97,3	89,8	93,3	93,0	85,3	94,4	98,4	93,4

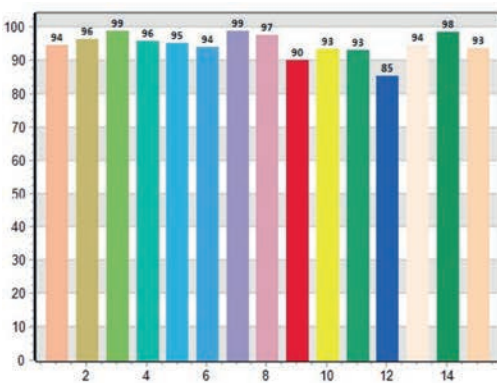
TM30 C values, 16 binned values out of total of 99 C values

C1	C2	C3	C4	C5	C6	C7	C8	C9	C10	C11	C12	C13	C14	C15	C16
94,6	95,7	95,9	95,9	95,0	96,9	95,5	93,1	93,3	92,2	89,3	96,0	94,8	94,8	87,8	94,5

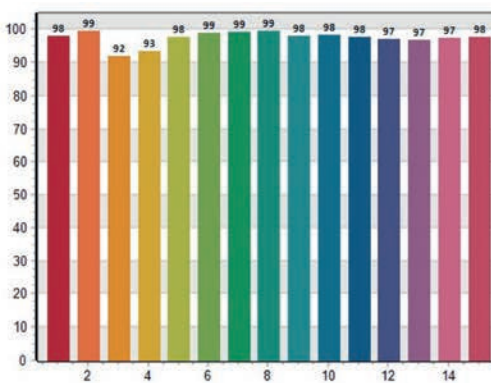
CQS Q values

Q1	Q2	Q3	Q4	Q5	Q6	Q7	Q8	Q9	Q10	Q11	Q12	Q13	Q14	Q15
97,9	99,5	91,9	93,2	97,7	98,9	99,0	99,4	98,0	98,1	97,6	97,1	96,6	97,2	97,5

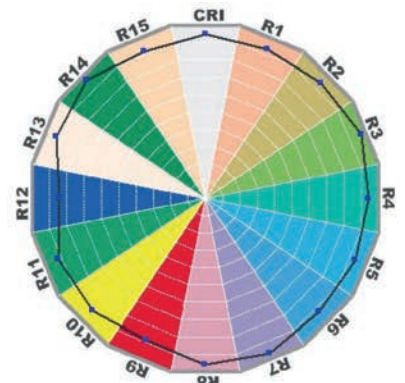
CRI: 96.22



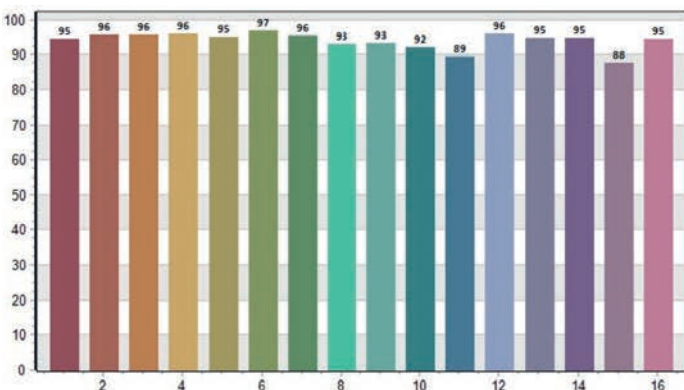
CQS: 96.61



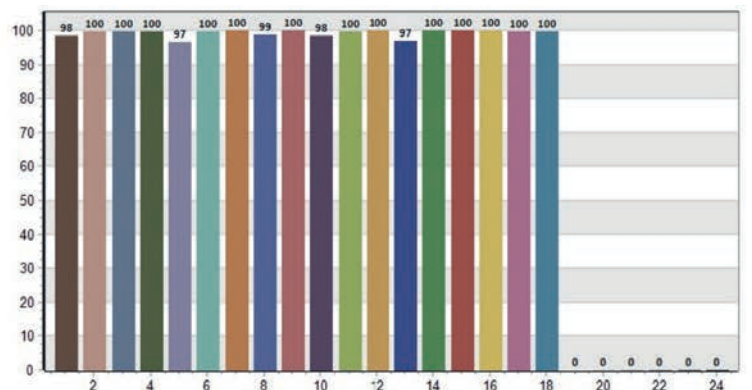
CRI-2



TM30: 94.70



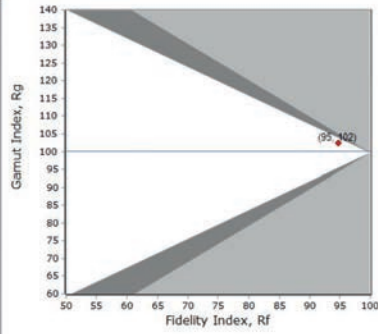
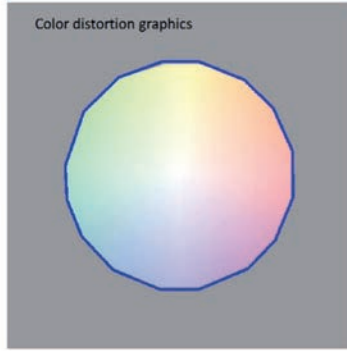
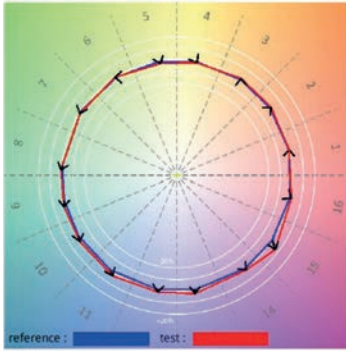
TLCI: 98.89



Otello 8 HD VariWhite +, Minimum Zoom, 5.600K

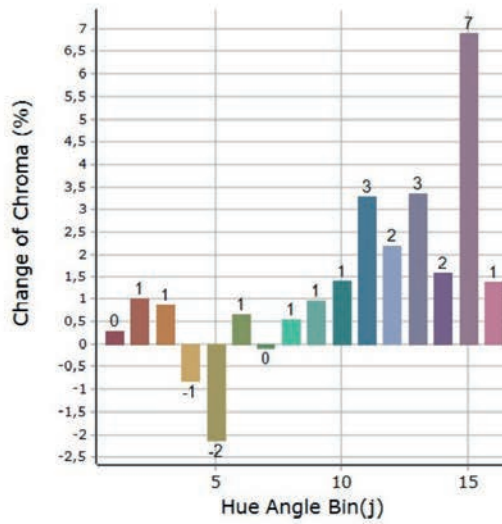
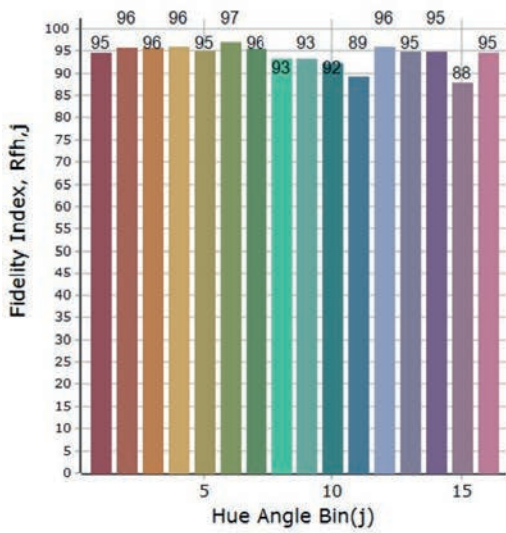
Measurements taken at 4.3 meters

General Color Rendition



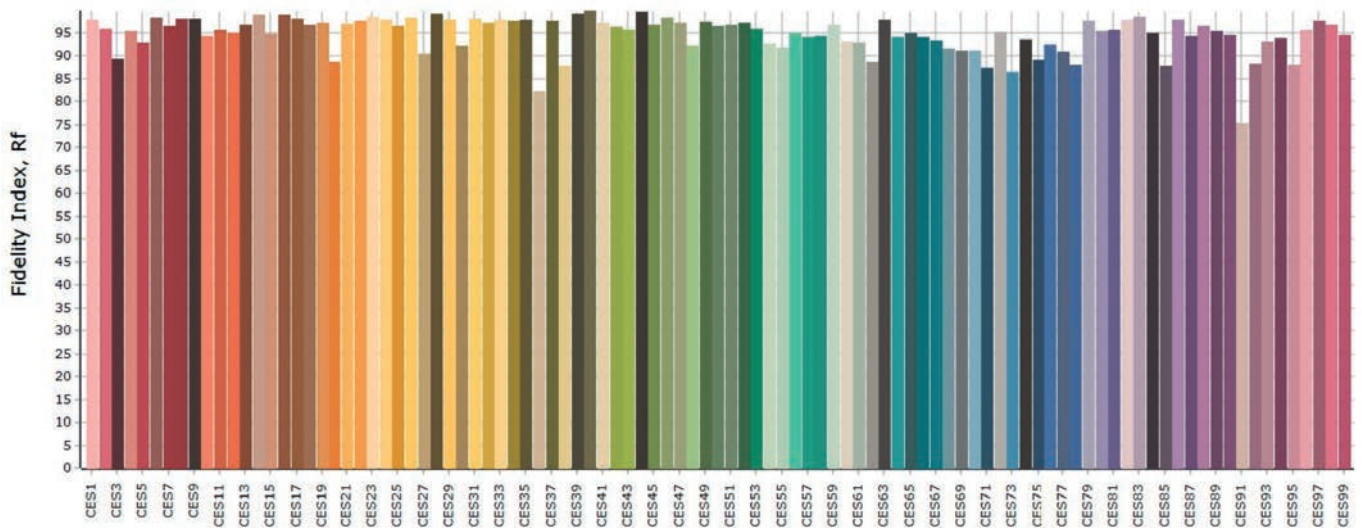
Rf 94,7 Fidelity index Rf
Rg 102,4 Gamut index Rg

Color Rendition by Hue



Hue Bin	Rf	Graphic shifts (%)	
		Chroma	Hue
1	94,6	0,3%	0,6%
2	95,7	1,0%	0,3%
3	95,8	0,9%	0,7%
4	95,9	-0,8%	-0,8%
5	95,0	-2,1%	-0,4%
6	96,9	0,7%	1,0%
7	95,5	-0,1%	2,1%
8	93,1	0,5%	3,1%
9	93,3	1,0%	5,3%
10	92,2	1,4%	4,3%
11	89,3	3,3%	5,0%
12	96,0	2,2%	0,3%
13	94,8	3,4%	-0,7%
14	94,8	1,6%	0,2%
15	87,7	6,9%	-5,4%
16	94,5	1,4%	-0,7%

Color Fidelity by Sample



Otello 8 HD VariWhite +, Maximum Zoom, 5.600K

Measurements taken at 4.3 meters

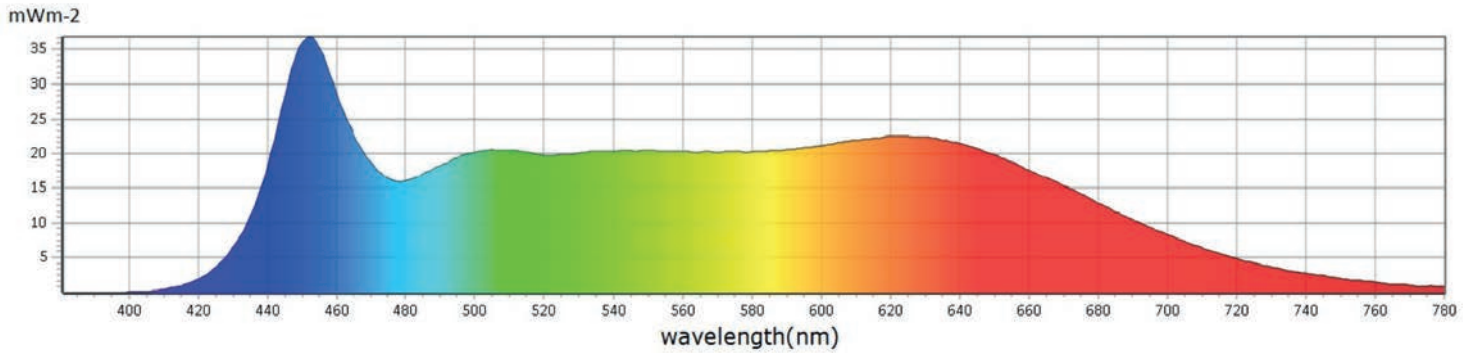
General

● CCT	5261 K
● x	0,3376
● y	0,3346
● LambdaD	593 nm
● LambdaP	451 nm

Measurements

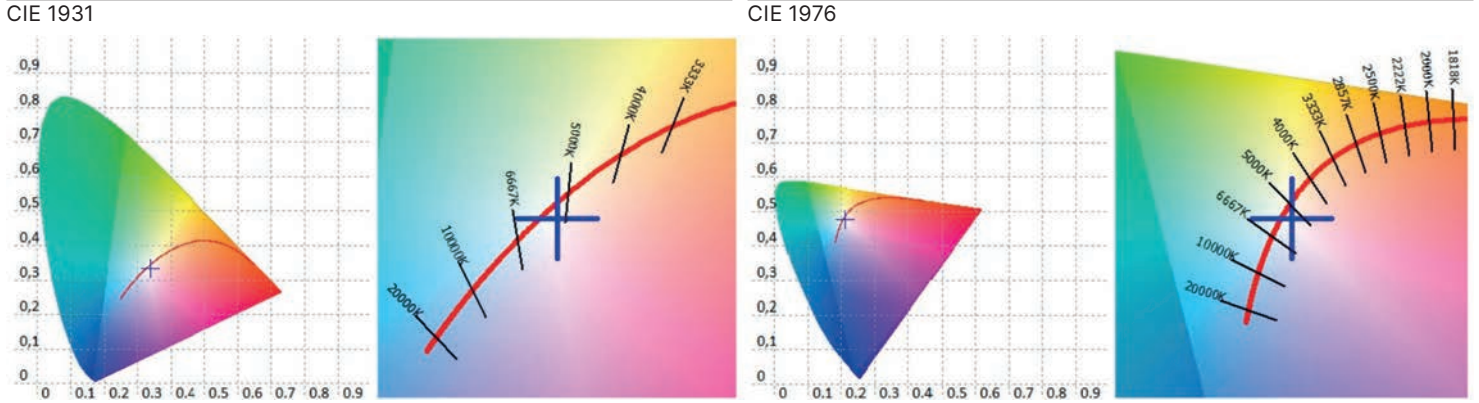
CCT : 5261 K	x10 : 0,3395	delta-x : -0,0006	LambdaD : 593 nm	PPFD : 25,02 $\mu\text{molm}^{-2}\text{s}^{-1}$	S/P : 2,24	R3 : 98,6	R10 : 91,4
LUX : 1496 lx	y10 : 0,3384	delta-y : -0,0114	LambdaP : 451 nm	PFD : 26,61 $\mu\text{molm}^{-2}\text{s}^{-1}$	IRR : 5,653	R4 : 94,7	R11 : 91,7
I-Time : 6000 us	u'10 : 0,2128	delta-u' : 0,0041	Purity : 1,65%	PFD-B : 6,070 $\mu\text{molm}^{-2}\text{s}^{-1}$	CQS : 96,3	R5 : 93,8	R12 : 85,2
x : 0,3376	v'10 : 0,4773	delta-v' : -0,0059	fc : 139,0	PFD-G : 9,364 $\mu\text{molm}^{-2}\text{s}^{-1}$	CRI : 95,3	R6 : 92,6	R13 : 93,0
y : 0,3346	X : 1509,18	Duv : -0,0057	Rf : 94,4	PFD-R : 9,581 $\mu\text{molm}^{-2}\text{s}^{-1}$	TLCI : 98,8	R7 : 98,4	R14 : 98,4
u' : 0,2130	Y : 1495,68	MEL : 1475 lx	Rg : 102,9	PFD-UV : 0,0022 $\mu\text{molm}^{-2}\text{s}^{-1}$	R1 : 93,2	R8 : 96,3	R15 : 91,7
v' : 0,4750	Z : 1465,48	LambdaPV : 36,81	GAI : 98,8	PFD-FR : 1,592 $\mu\text{molm}^{-2}\text{s}^{-1}$	R2 : 95,1	R9 : 86,6	

Spectrum



Otello 8 HD VariWhite +, Maximum Zoom, 5.600K

Measurements taken at 4.3 meters



CRI values, only R1-R8 are used to calculate final CRI

R1	R2	R3	R4	R5	R6	R7	R8	R9	R10	R11	R12	R13	R14	R15
93,2	95,1	98,6	94,7	93,8	92,6	98,4	96,3	86,6	91,4	91,7	85,2	93,0	98,4	91,7

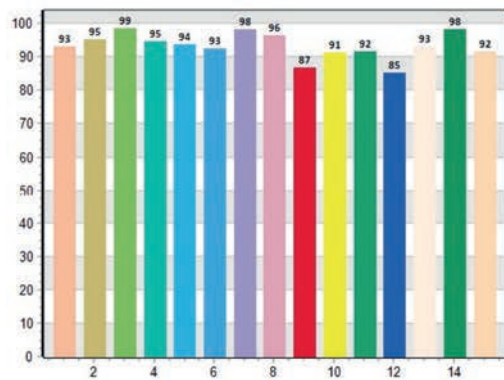
TM30 C values, 16 binned values out of total of 99 C values

C1	C2	C3	C4	C5	C6	C7	C8	C9	C10	C11	C12	C13	C14	C15	C16
94,1	95,0	95,2	95,9	95,0	96,4	95,2	92,5	93,1	92,1	89,2	95,8	94,9	94,4	87,8	94,0

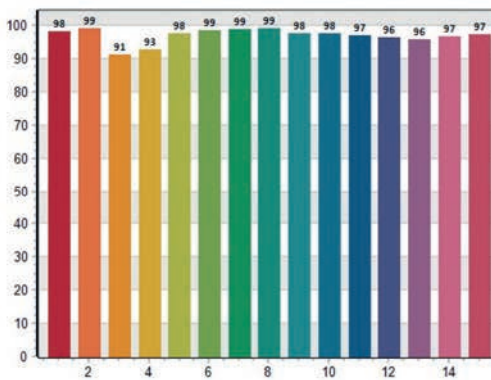
CQS Q values

Q1	Q2	Q3	Q4	Q5	Q6	Q7	Q8	Q9	Q10	Q11	Q12	Q13	Q14	Q15
98,3	99,2	91,3	92,9	97,6	98,7	98,9	99,1	97,6	97,7	97,1	96,3	95,8	96,7	97,2

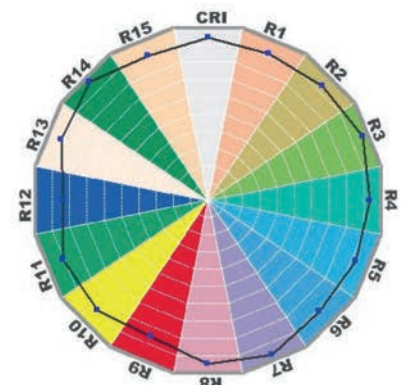
CRI: 95.33



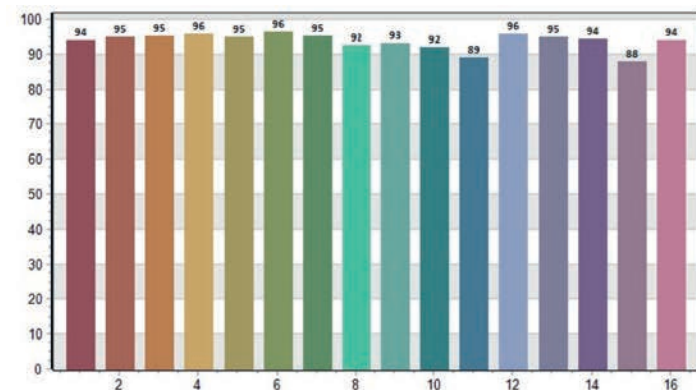
CQS: 96.28



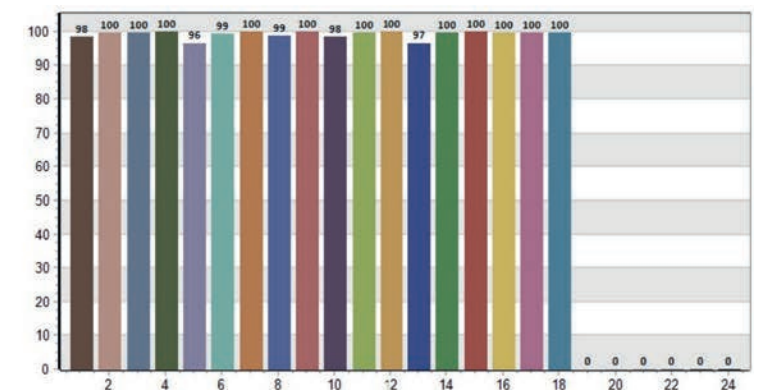
CRI-2



TM30: 94.43



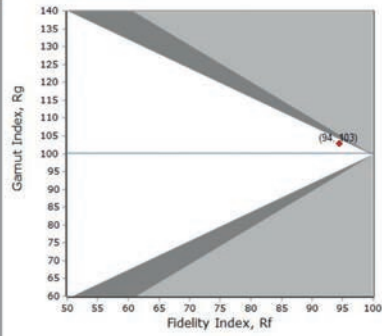
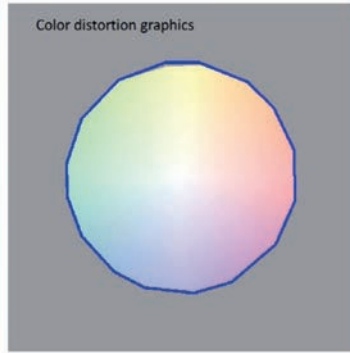
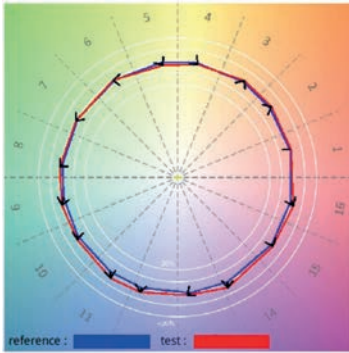
TLCI: 98.81



Otello 8 HD VariWhite +, Maximum Zoom, 5.600K

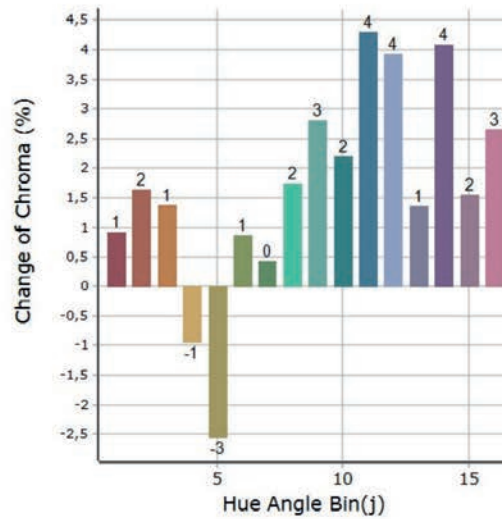
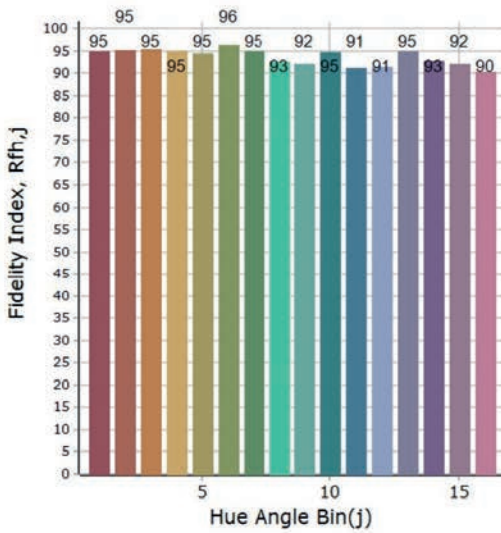
Measurements taken at 4.3 meters

General Color Rendition



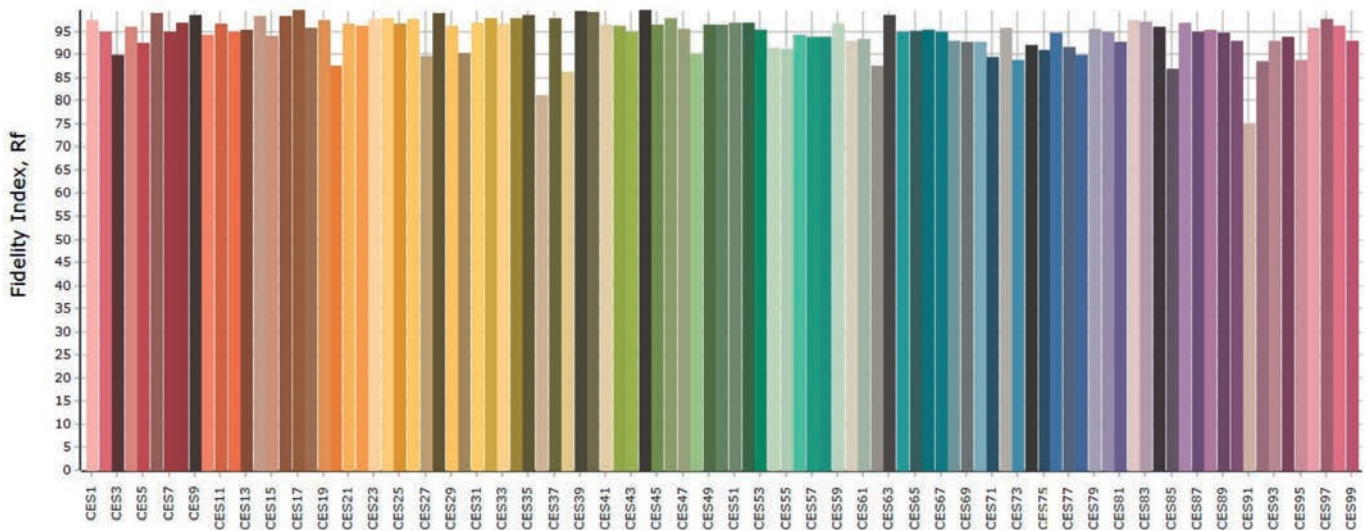
Rf 94,5 Fidelity index Rf
Rg 103,0 Gammut index Rg

Color Rendition by Hue



Hue Bin	Rf	Graphic shifts (%)	
		Chroma	Hue
1	95,0	0,9%	0,6%
2	95,1	1,6%	0,0%
3	95,5	1,4%	-0,2%
4	95,1	-0,9%	-1,9%
5	94,5	-2,5%	-1,1%
6	96,3	0,9%	1,2%
7	94,9	0,4%	2,3%
8	92,6	1,7%	2,7%
9	92,1	2,8%	6,0%
10	94,7	2,2%	2,0%
11	91,2	4,3%	3,4%
12	91,4	3,9%	-0,2%
13	95,0	1,4%	-2,9%
14	92,9	4,1%	-2,5%
15	92,1	1,5%	-1,1%
16	90,4	2,7%	-4,3%

Color Fidelity by Sample



Otello 8 HD VariWhite +, Minimum Zoom, 6.500K

Measurements taken at 4.3 meters

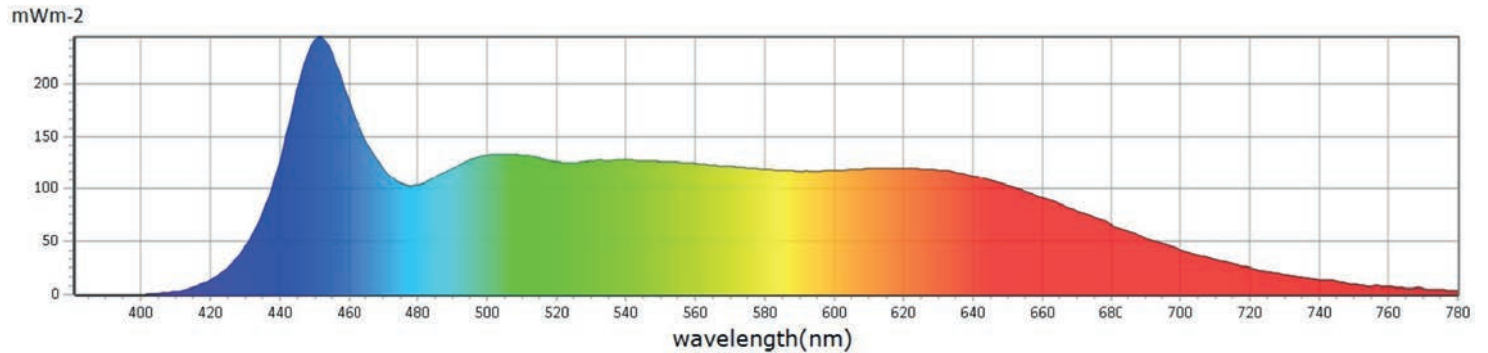
General

● CCT	6135 K
● x	0,3198
● y	0,3272
● LambdaD	486 nm
● LambdaP	451 nm

Measurements

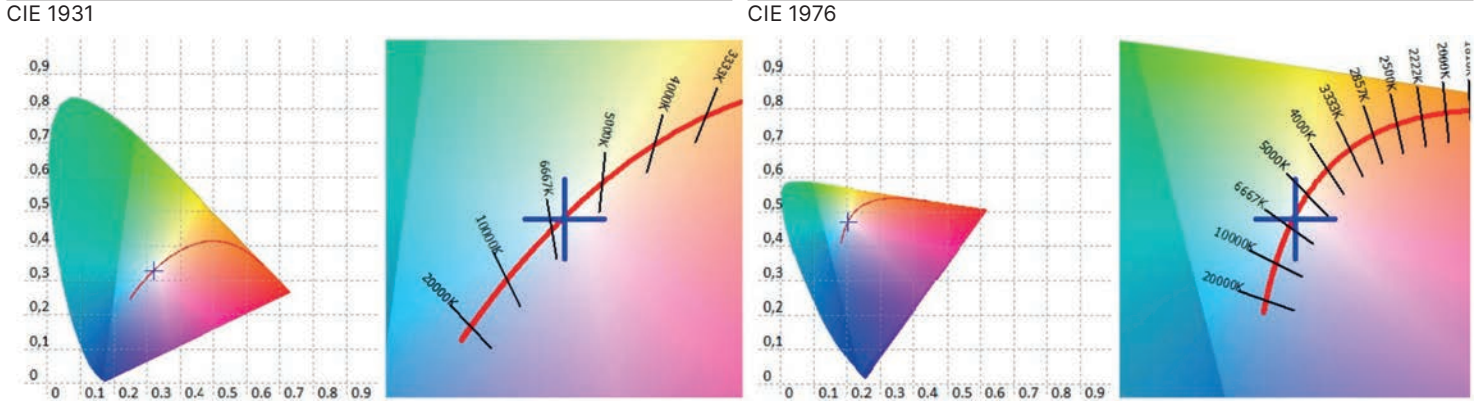
CCT : 6135 K	x10 : 0,3220	delta-x : 0,0001	LambdaD: 486 nm	PPFD : 147,6 $\mu\text{mol}\cdot\text{m}^{-2}\cdot\text{s}^{-1}$	S/P : 2,39	R3 : 98,4	R10 : 96,8
LUX : 8971 lx	y10 : 0,3317	delta-y : -0,0022	LambdaP: 451 nm	PFD : 155,8 $\mu\text{mol}\cdot\text{m}^{-2}\cdot\text{s}^{-1}$	IRR : 33,57	R4 : 98,0	R11 : 95,5
I-Time : 790 us	u'10 : 0,2033	delta-u' : 0,0010	Purity : 5,07%	PFD-B : 39,99 $\mu\text{mol}\cdot\text{m}^{-2}\cdot\text{s}^{-1}$	CQS : 96,4	R5 : 97,1	R12 : 82,3
x : 0,3198	v'10 : 0,4711	delta-v' : -0,0012	fc : 833,7	PFD-G : 57,20 $\mu\text{mol}\cdot\text{m}^{-2}\cdot\text{s}^{-1}$	CRI : 97,6	R6 : 95,0	R13 : 96,8
y : 0,3272	X : 8766,11	Duv : -0,0012	Rf : 94,3	PFD-R : 50,45 $\mu\text{mol}\cdot\text{m}^{-2}\cdot\text{s}^{-1}$	TLCI : 98,9	R7 : 98,5	R14 : 98,4
u' : 0,2034	Y : 8970,98	MEL : 9539 lx	Rg : 101,3	PFD-UV : 0,0082 $\mu\text{mol}\cdot\text{m}^{-2}\cdot\text{s}^{-1}$	R1 : 96,6	R8 : 98,9	R15 : 95,8
v' : 0,4684	Z : 9676,33	LambdaPV : 244,1	GAI : 99,2	PFD-FR : 8,172 $\mu\text{mol}\cdot\text{m}^{-2}\cdot\text{s}^{-1}$	R2 : 97,9	R9 : 95,4	

Spectrum



Otello 8 HD VariWhite +, Minimum Zoom, 6.500K

Measurements taken at 4.3 meters



CRI values, only R1-R8 are used to calculate final CRI

R1	R2	R3	R4	R5	R6	R7	R8	R9	R10	R11	R12	R13	R14	R15
96,6	97,9	98,4	98,0	97,1	95,0	98,5	98,9	95,4	96,8	95,5	82,3	96,8	98,4	95,8

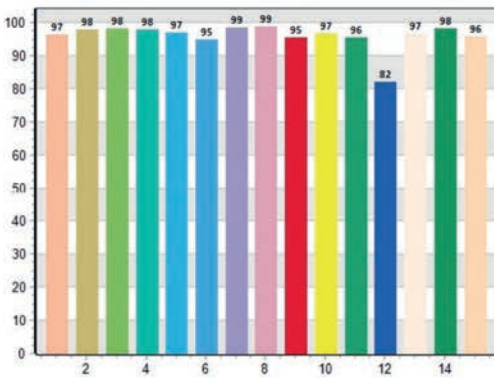
TM30 C values, 16 binned values out of total of 99 C values

C1	C2	C3	C4	C5	C6	C7	C8	C9	C10	C11	C12	C13	C14	C15	C16
94,6	96,7	96,0	96,2	92,6	97,0	97,0	93,0	92,3	90,5	88,0	96,1	94,2	95,1	86,1	96,7

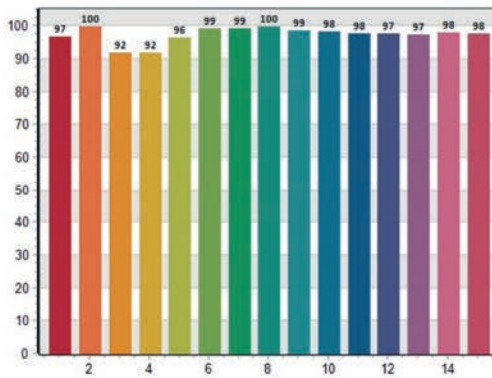
CQS Q values

Q1	Q2	Q3	Q4	Q5	Q6	Q7	Q8	Q9	Q10	Q11	Q12	Q13	Q14	Q15
96,7	99,8	91,7	92,0	96,4	99,2	99,2	99,8	98,5	98,3	97,8	97,5	97,2	98,0	97,6

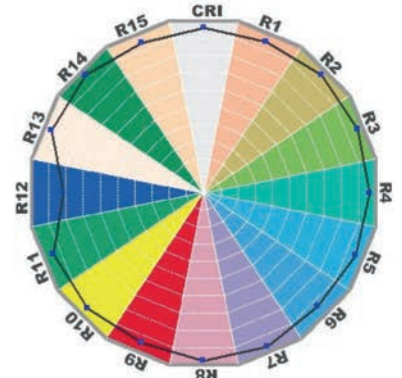
CRI: 97.56



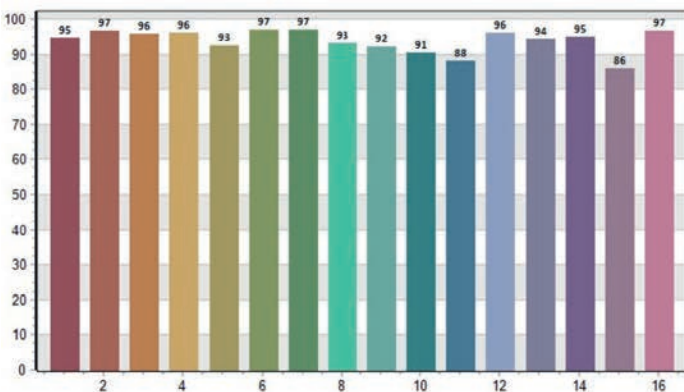
CQS: 96.41



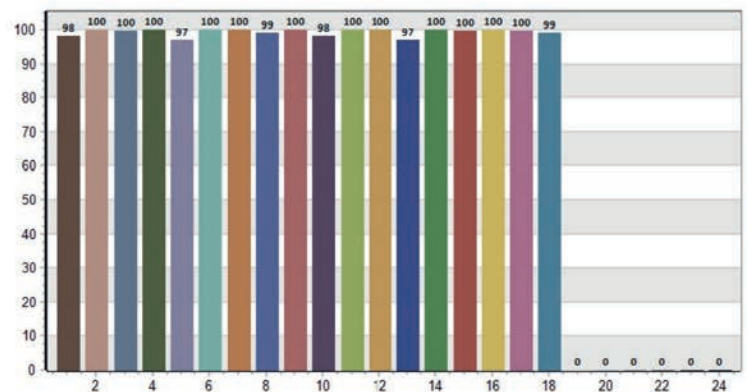
CRI-2



TM30: 94.35



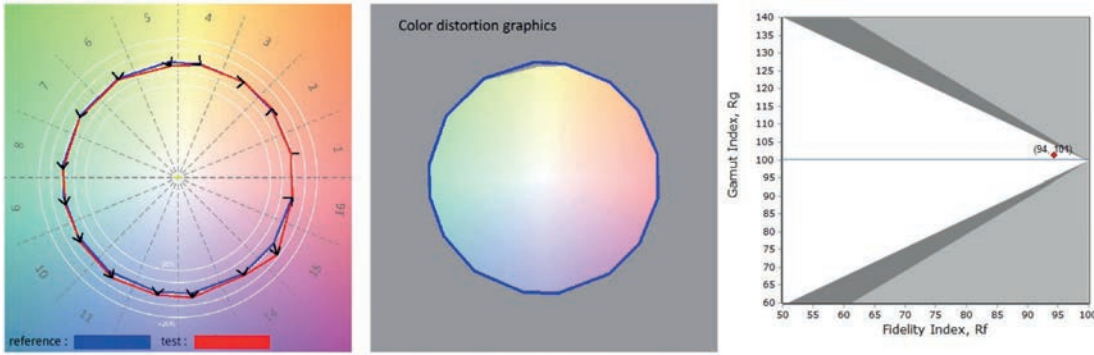
TLCI: 98.92



Otello 8 HD VariWhite +, Minimum Zoom, 6.500K

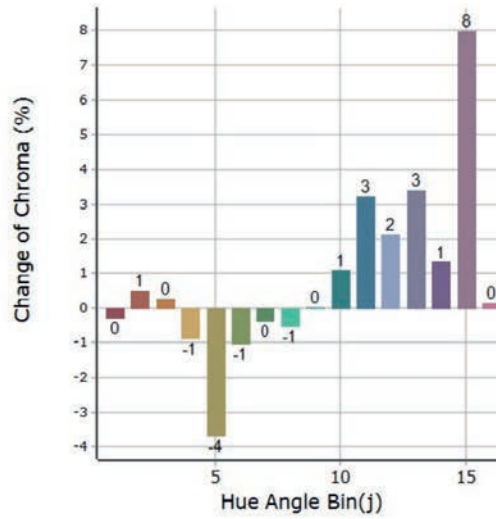
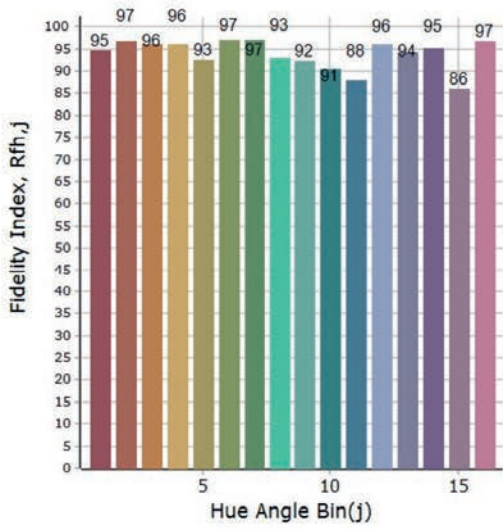
Measurements taken at 4.3 meters

General Color Rendition



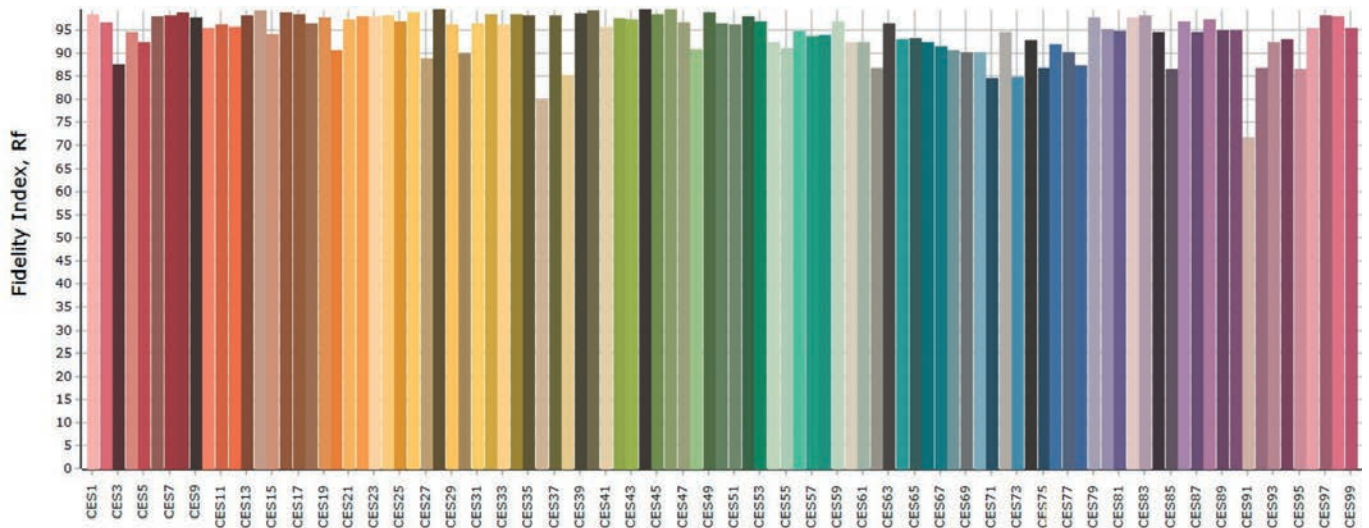
Rf 94,3 Fidelity index Rf
Rg 101,3 Gammut index Rg

Color Rendition by Hue



Hue Bin	Rf	Graphic shifts (%)	
		Chroma	Hue
1	94,6	-0,3%	0,4%
2	96,7	0,5%	0,8%
3	96,0	0,3%	0,1%
4	96,2	-0,9%	-0,7%
5	92,6	-3,7%	-1,2%
6	97,0	-1,0%	0,8%
7	97,0	-0,4%	1,4%
8	93,0	-0,5%	3,5%
9	92,3	0,0%	6,0%
10	90,5	1,1%	5,4%
11	87,9	3,2%	6,0%
12	96,0	2,1%	0,3%
13	94,2	3,4%	-1,1%
14	95,1	1,3%	-0,6%
15	86,1	8,0%	-7,1%
16	96,7	0,1%	0,3%

Color Fidelity by Sample



Otello 8 HD VariWhite +, Maximum Zoom, 6.500K

Measurements taken at 4.3 meters

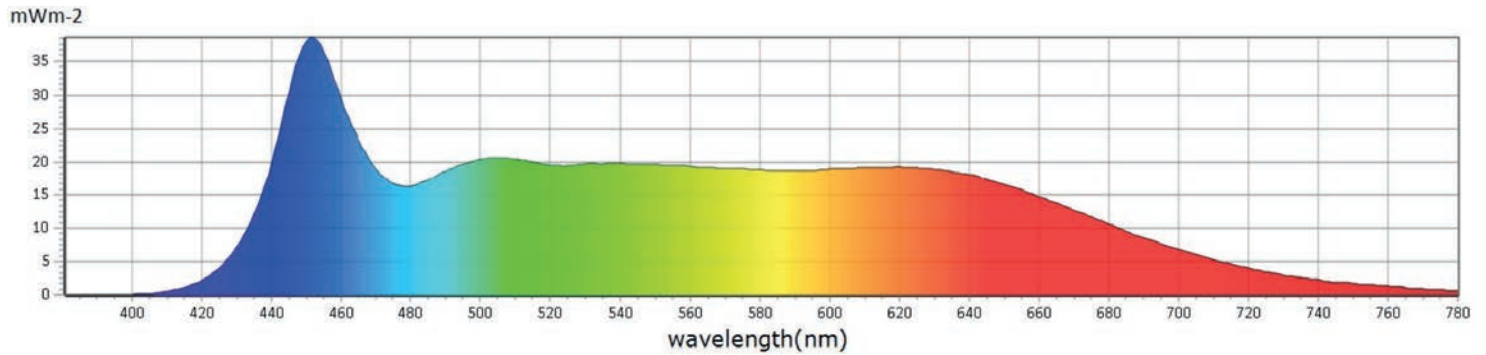
General

● CCT	6069 K
● x	0,3212
● y	0,3250
● LambdaD	482 nm
● LambdaP	451 nm

Measurements

CCT : 6069 K	x10 : 0,3232	delta-x : 0,0004	LambdaD : 482 nm	PPFD : 23,30 $\mu\text{molm}^{-2}\text{s}^{-1}$	S/P : 2,38	R3 : 98,4	R10 : 94,7
LUX : 1405 lx	y10 : 0,3295	delta-y : -0,0056	LambdaP : 451 nm	PFD : 24,60 $\mu\text{molm}^{-2}\text{s}^{-1}$	IRR : 5,296	R4 : 96,6	R11 : 93,9
I-Time : 5600 us	u'10 : 0,2050	delta-u' : 0,0024	Purity : 4,80%	PFD-B : 6,303 $\mu\text{molm}^{-2}\text{s}^{-1}$	CQS : 96,2	R5 : 95,8	R12 : 82,8
x : 0,3212	v'10 : 0,4701	delta-v' : -0,0029	fc : 130,6	PFD-G : 8,925 $\mu\text{molm}^{-2}\text{s}^{-1}$	CRI : 96,6	R6 : 94,0	R13 : 95,1
y : 0,3250	X : 1388,85	Duv : -0,0031	Rf : 94,1	PFD-R : 8,069 $\mu\text{molm}^{-2}\text{s}^{-1}$	TLCI : 98,9	R7 : 98,5	R14 : 98,3
u' : 0,2053	Y : 1405,31	MEL : 1492 lx	Rg : 101,9	PFD-UV : 0,0016 $\mu\text{molm}^{-2}\text{s}^{-1}$	R1 : 95,0	R8 : 97,9	R15 : 94,0
v' : 0,4674	Z : 1529,75	LambdaPV : 38,66	GAI : 100,6	PFD-FR : 1,306 $\mu\text{molm}^{-2}\text{s}^{-1}$	R2 : 96,8	R9 : 91,4	

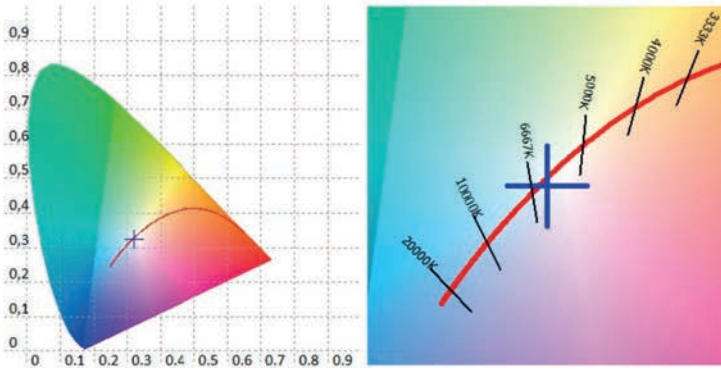
Spectrum



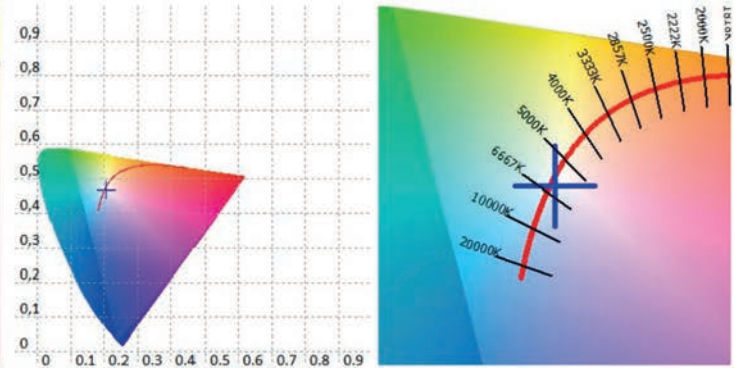
Otello 8 HD VariWhite +, Maximum Zoom, 6.500K

Measurements taken at 4.3 meters

CIE 1931



CIE 1976



CRI values, only R1-R8 are used to calculate final CRI

R1	R2	R3	R4	R5	R6	R7	R8	R9	R10	R11	R12	R13	R14	R15
95,0	96,8	98,4	96,6	95,8	94,0	98,5	97,9	91,4	94,7	93,9	82,8	95,1	98,3	94,0

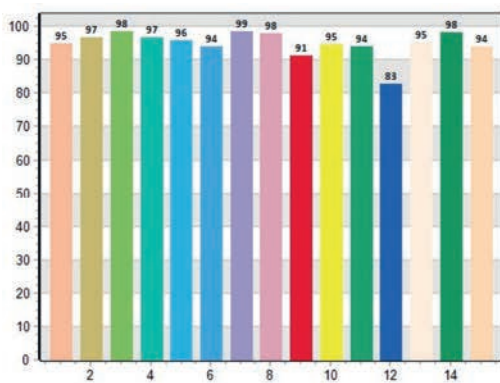
TM30 C values, 16 binned values out of total of 99 C values

C1	C2	C3	C4	C5	C6	C7	C8	C9	C10	C11	C12	C13	C14	C15	C16
94,2	95,8	95,5	96,1	92,7	96,7	96,5	92,4	92,1	90,5	87,8	95,9	94,4	94,9	86,3	96,1

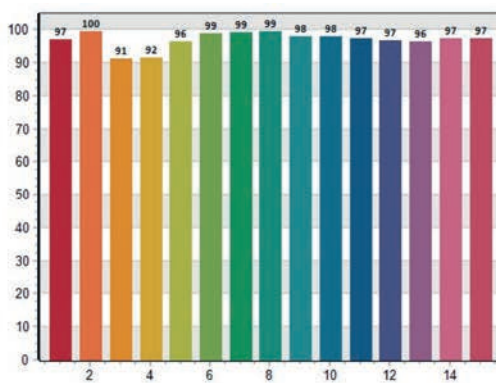
CQS Q values

Q1	Q2	Q3	Q4	Q5	Q6	Q7	Q8	Q9	Q10	Q11	Q12	Q13	Q14	Q15
97,2	99,5	91,2	91,7	96,5	98,9	99,2	99,4	98,0	98,0	97,3	96,8	96,4	97,4	97,4

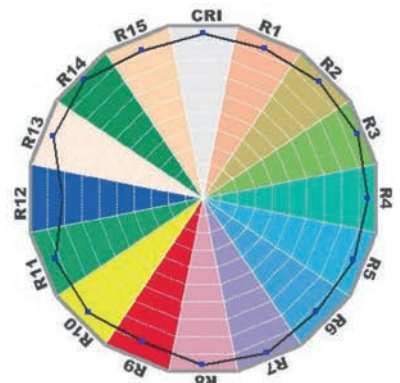
CRI: 96.63



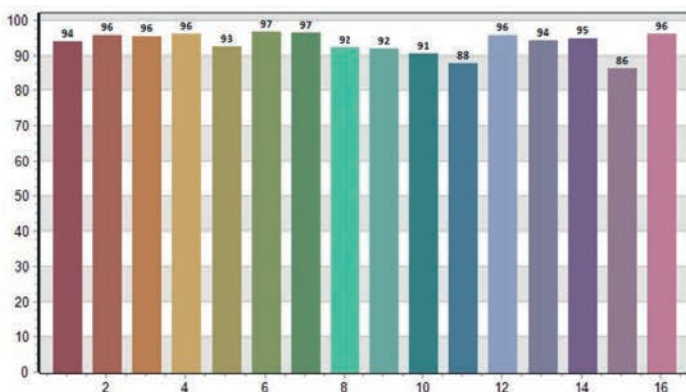
CQS: 96.17



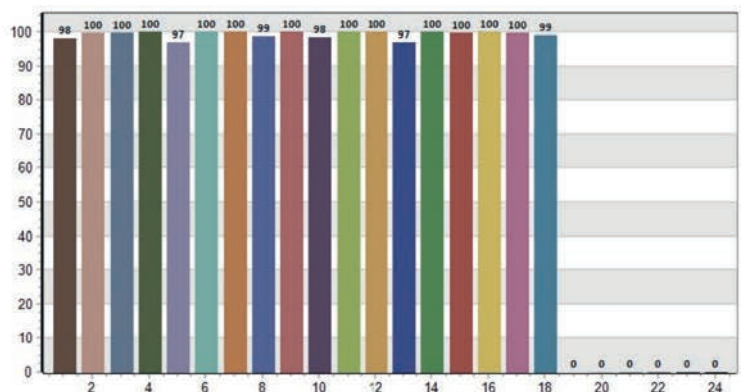
CRI-2



TM30: 94.13



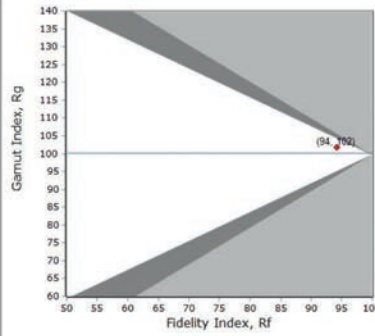
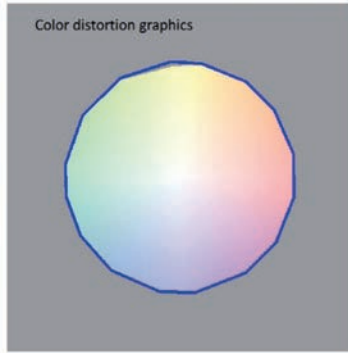
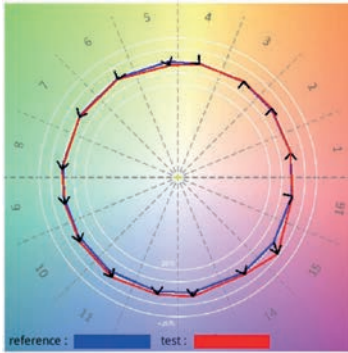
TLCI: 98.88



Otello 8 HD VariWhite +, Maximum Zoom, 6.500K

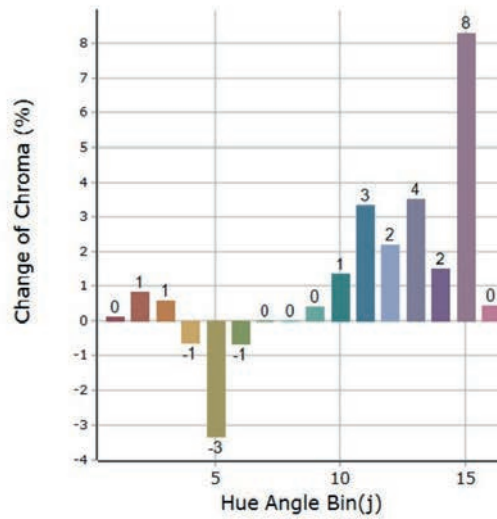
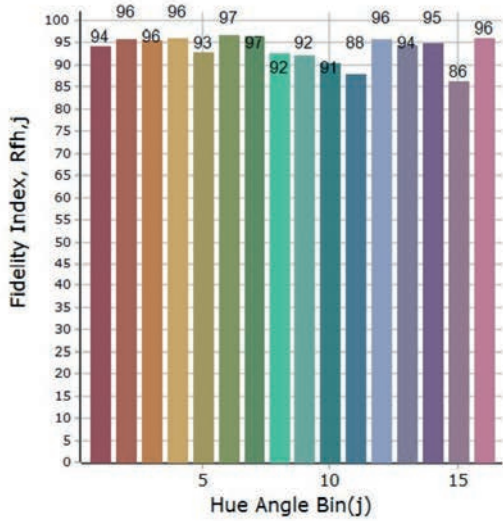
Measurements taken at 4.3 meters

General Color Rendition



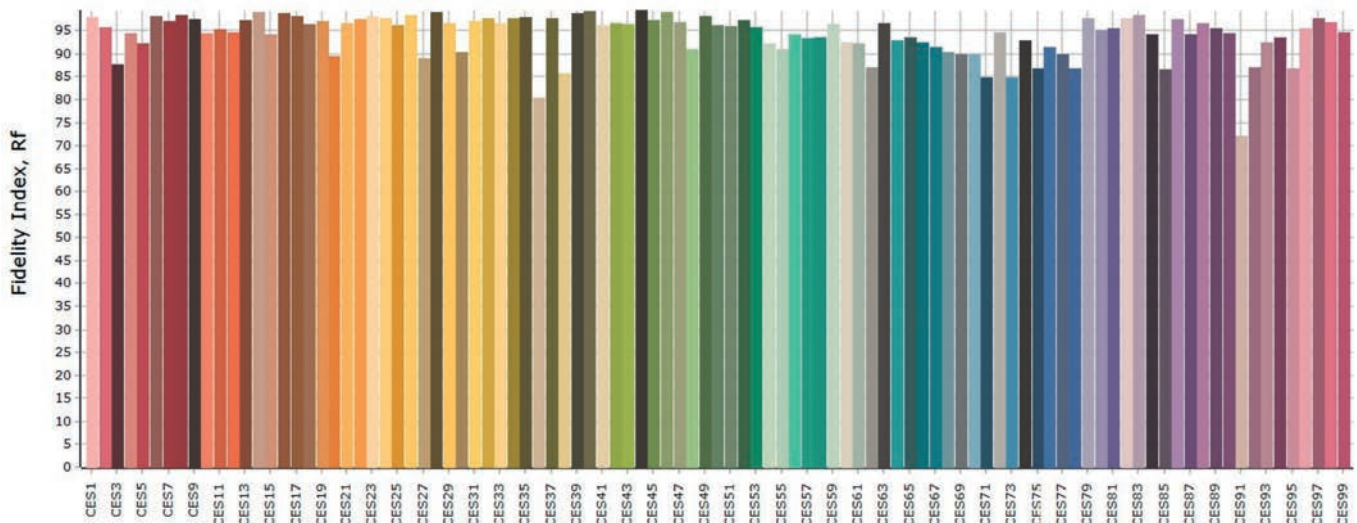
Rf 94,2 Fidelity index Rf
Rg 101,9 Gamut index Rg

Color Rendition by Hue



Hue Bin	Rf	Graphic shifts (%)	
		Chroma	Hue
1	94,2	0,1%	0,6%
2	95,9	0,8%	1,0%
3	95,5	0,6%	0,2%
4	96,1	-0,6%	-0,5%
5	92,7	-3,3%	-1,0%
6	96,7	-0,7%	1,0%
7	96,6	0,0%	1,6%
8	92,5	0,0%	3,7%
9	92,2	0,4%	6,0%
10	90,5	1,3%	5,3%
11	87,8	3,3%	6,0%
12	95,9	2,2%	0,6%
13	94,4	3,5%	-0,6%
14	94,9	1,5%	0,0%
15	86,3	8,3%	-6,3%
16	96,1	0,4%	0,6%

Color Fidelity by Sample



● Coemar Lighting S.r.l.

Via Carpenedolo, 90
46043, Castiglione delle Stiviere (MN) – Italy

P. +39 0376 1514412

M1. info@coemar.com

M2. service@coemar.com

W. coemar.com

P.iva – C.f. 02415330204

